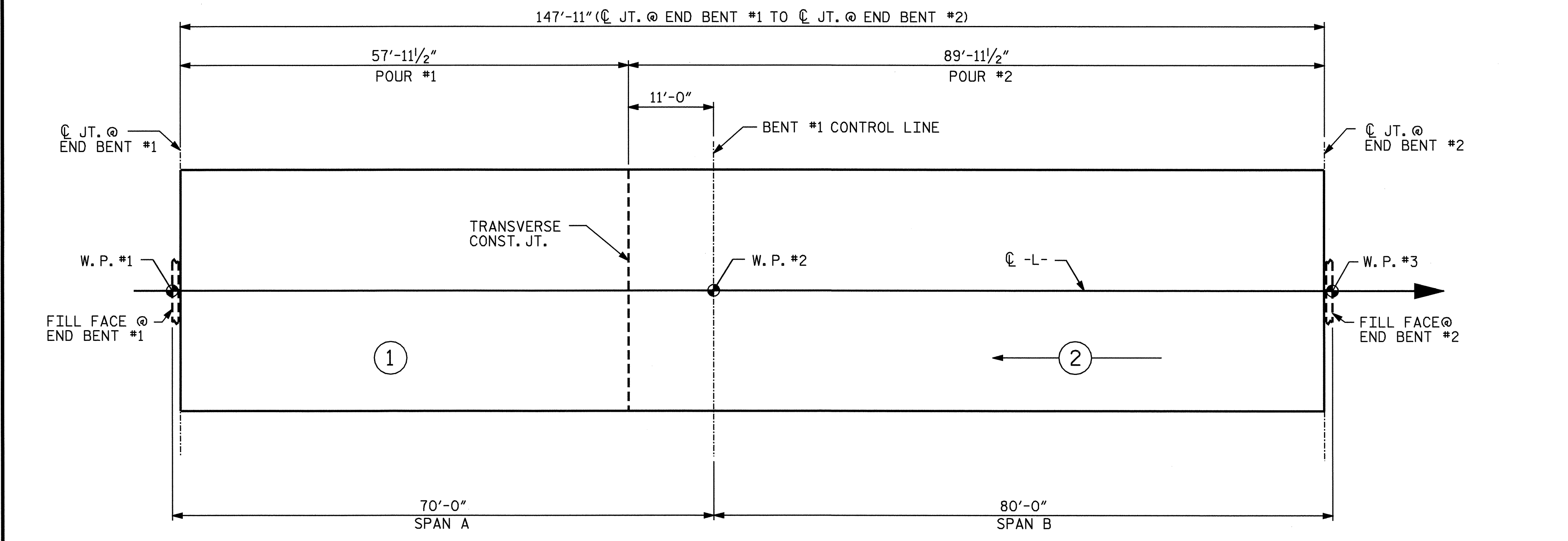


LAYOUT FOR COMPUTING AREA
REINFORCED CONCRETE DECK SLAB
(SQ. FT. = 4622)



POURING SEQUENCE

SUPERSTRUCTURE REINFORCING STEEL LENGTHS ARE BASED ON THE FOLLOWING MINIMUM SPLICE LENGTHS

| BAR SIZE | SUPERSTRUCTURE EXCEPT APPROACH SLABS, PARAPET, AND BARRIER RAIL | | APPROACH SLABS | | PARAPET AND BARRIER RAIL |
|----------|---|----------|----------------|----------|--------------------------|
| | EPOXY COATED | UNCOATED | EPOXY COATED | UNCOATED | |
| #4 | 2'-0" | 1'-9" | 2'-0" | 1'-9" | 2'-9" |
| #5 | 2'-6" | 2'-2" | 2'-6" | 2'-2" | 3'-5" |
| #6 | 3'-0" | 2'-7" | 3'-10" | 2'-7" | 4'-4" |
| #7 | 5'-3" | 3'-6" | | | |
| #8 | 6'-10" | 4'-7" | | | |

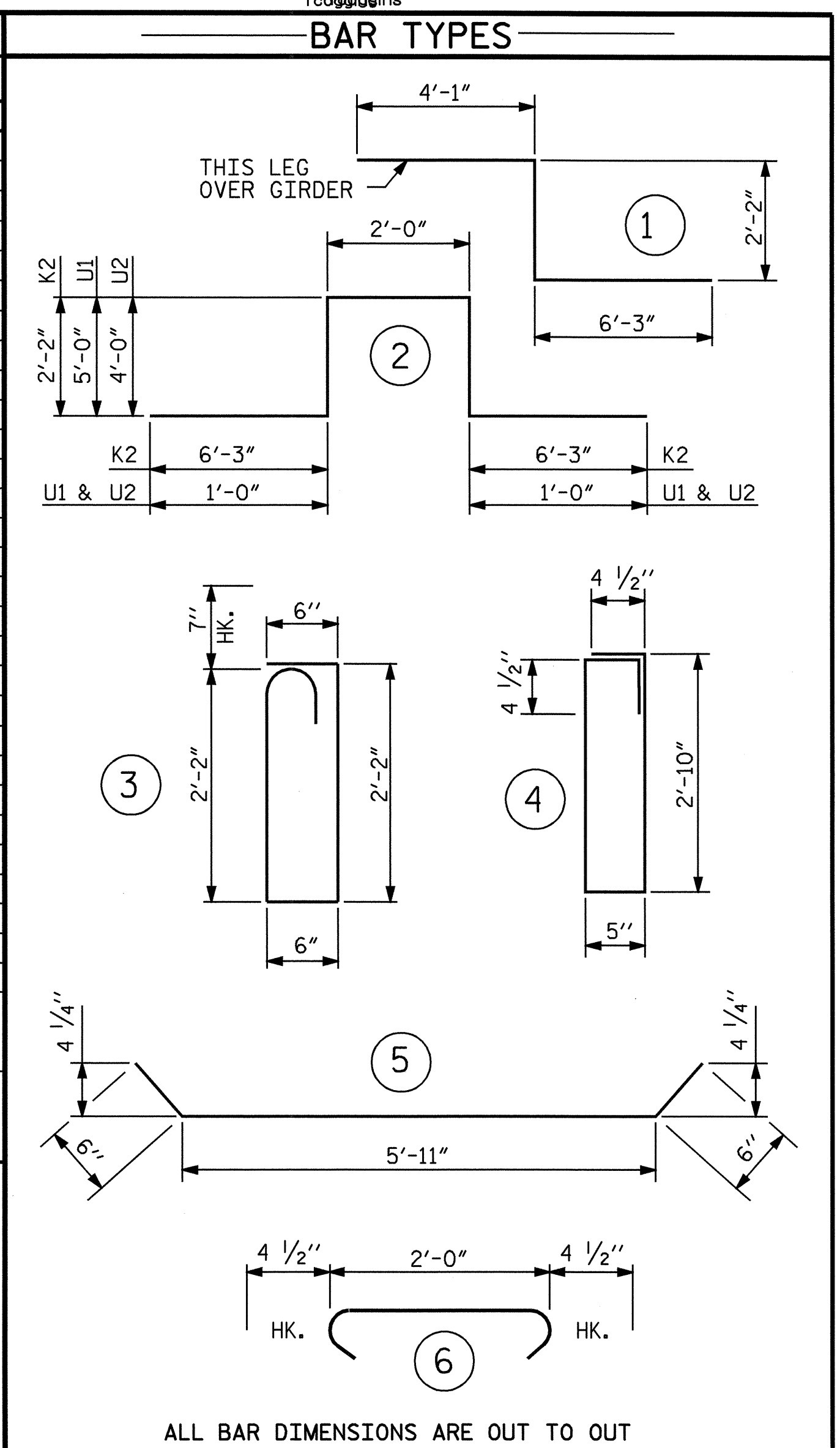
GROOVING BRIDGE FLOORS

| | | |
|---------------|------|--------|
| APPROACH SLAB | 1183 | SQ.FT. |
| BRIDGE DECK | 3665 | SQ.FT. |
| TOTAL | 4848 | SQ.FT. |

BILL OF MATERIAL

| BAR | NO. | SIZE | TYPE | LENGTH | WEIGHT |
|-----|-----|------|------|---------|--------|
| *A1 | 252 | 5 | STR | 30'-11" | 8126 |
| A2 | 253 | 5 | STR | 30'-11" | 8158 |
| *B1 | 42 | 4 | STR | 24'-11" | 699 |
| *B2 | 21 | 7 | STR | 55'-0" | 2361 |
| *B3 | 20 | 7 | STR | 22'-6" | 920 |
| *B4 | 42 | 4 | STR | 28'-5" | 797 |
| B5 | 99 | 5 | STR | 50'-8" | 5232 |
| *B6 | 12 | 4 | STR | 26'-3" | 210 |
| *G1 | 2 | 5 | STR | 30'-9" | 64 |
| *K1 | 8 | 8 | 1 | 12'-6" | 267 |
| *K2 | 8 | 8 | 2 | 18'-10" | 402 |
| K3 | 12 | 5 | STR | 6'-7" | 82 |
| K4 | 12 | 5 | 5 | 6'-11" | 87 |
| K5 | 5 | 4 | STR | 25'-1" | 84 |
| K6 | 6 | 4 | STR | 4'-5" | 18 |
| K7 | 6 | 4 | STR | 6'-7" | 26 |
| K8 | 12 | 4 | STR | 7'-3" | 58 |
| K9 | 6 | 4 | STR | 6'-3" | 25 |
| *S1 | 42 | 5 | 3 | 5'-11" | 259 |
| S2 | 36 | 4 | 4 | 7'-3" | 174 |
| S3 | 78 | 4 | 6 | 2'-9" | 143 |
| U1 | 15 | 4 | 2 | 14'-0" | 140 |
| U2 | 6 | 4 | 2 | 12'-0" | 48 |

| | |
|----------------------------------|-------|
| REINFORCING STEEL | 14275 |
| * EPOXY COATED REINFORCING STEEL | 14105 |



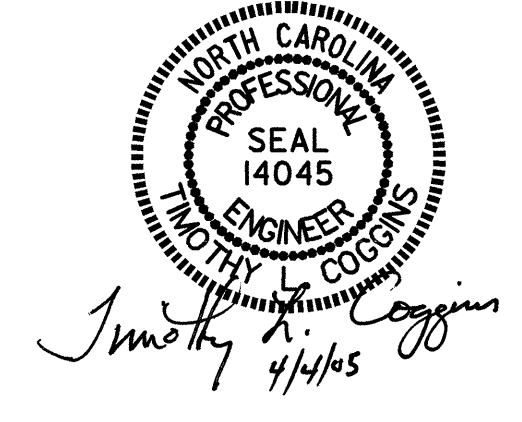
ALL BAR DIMENSIONS ARE OUT TO OUT

SUPERSTRUCTURE BILL OF MATERIAL

| | CLASS AA CONCRETE (CU. YDS.) | REINFORCING STEEL (LBS.) | EPOXY COATED REINFORCING STEEL (LBS.) |
|----------|------------------------------|--------------------------|---------------------------------------|
| POUR #1 | 63.5 | 14275 | 14105 |
| POUR #2 | 105.5 | | |
| TOTALS** | 169.0 | 14275 | 14105 |

**QUANTITIES FOR BARRIER RAIL ARE NOT INCLUDED

PROJECT NO. B-3828
CLEVELAND COUNTY
 STATION: 14+65.00 -L-



STATE OF NORTH CAROLINA
 DEPARTMENT OF TRANSPORTATION
 RALEIGH
STANDARD SUPERSTRUCTURE BILL OF MATERIAL

| OCTOBER 1987 | | | | REVISIONS | | | | SHEET NO. S-14 | |
|--------------|-----|-------|-----|-----------|-------|-----------------|--|----------------|--|
| NO. | BY: | DATE: | NO. | BY: | DATE: | TOTAL SHEETS 30 | | | |
| 1 | | | 3 | | | | | | |
| 2 | | | 4 | | | | | | |

| | |
|-----------------------------|-------------|
| ASSEMBLED BY : PEGGY ADKINS | DATE : 4-03 |
| CHECKED BY : T. AVERETTE | DATE : 4-03 |
| DRAWN BY : JMB | 5/87 |
| CHECKED BY : SJD | 9/87 |
| REV. 6/1/94 | EEM/GRP |
| REV. 8/16/99 | RWW/LES |