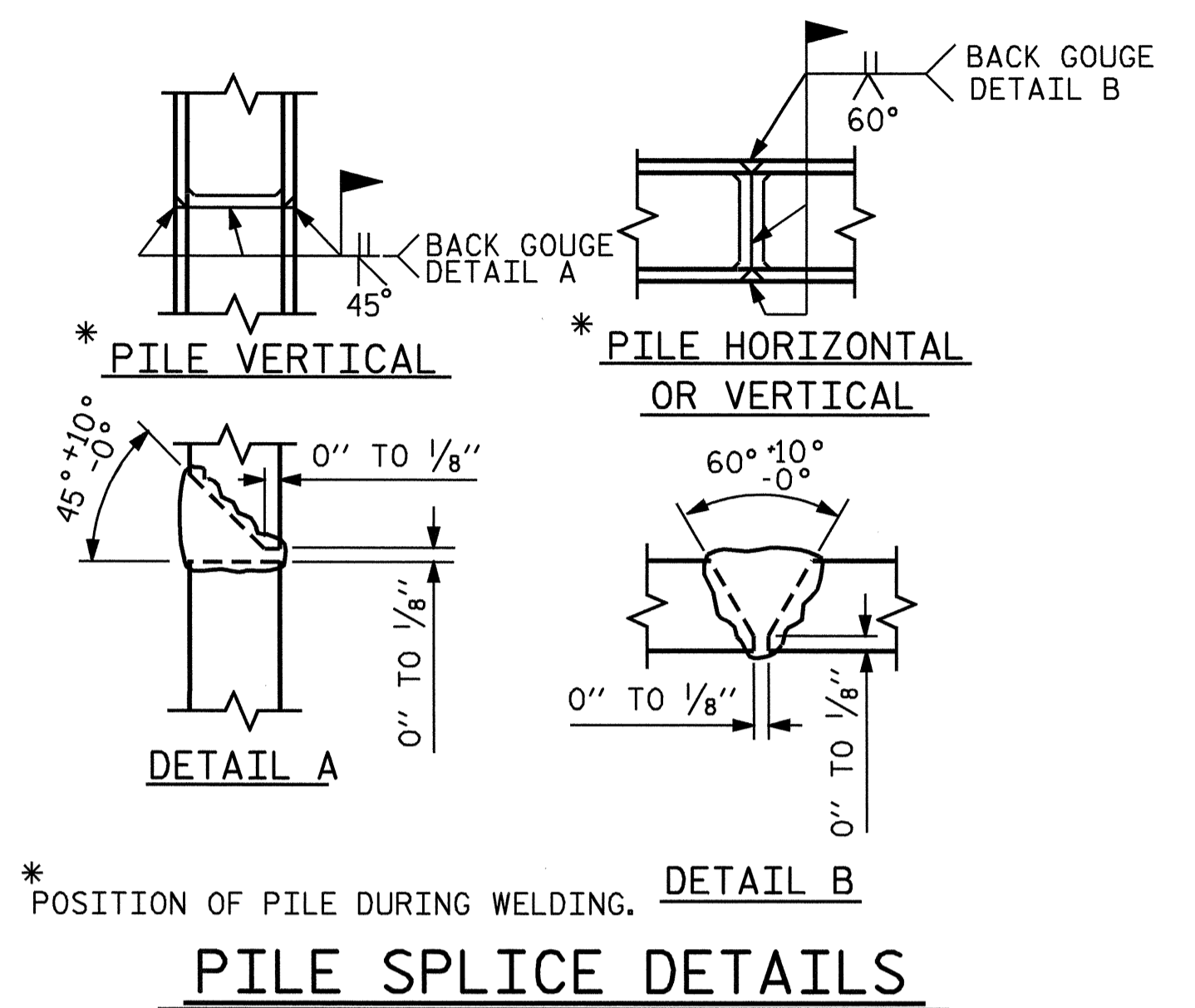
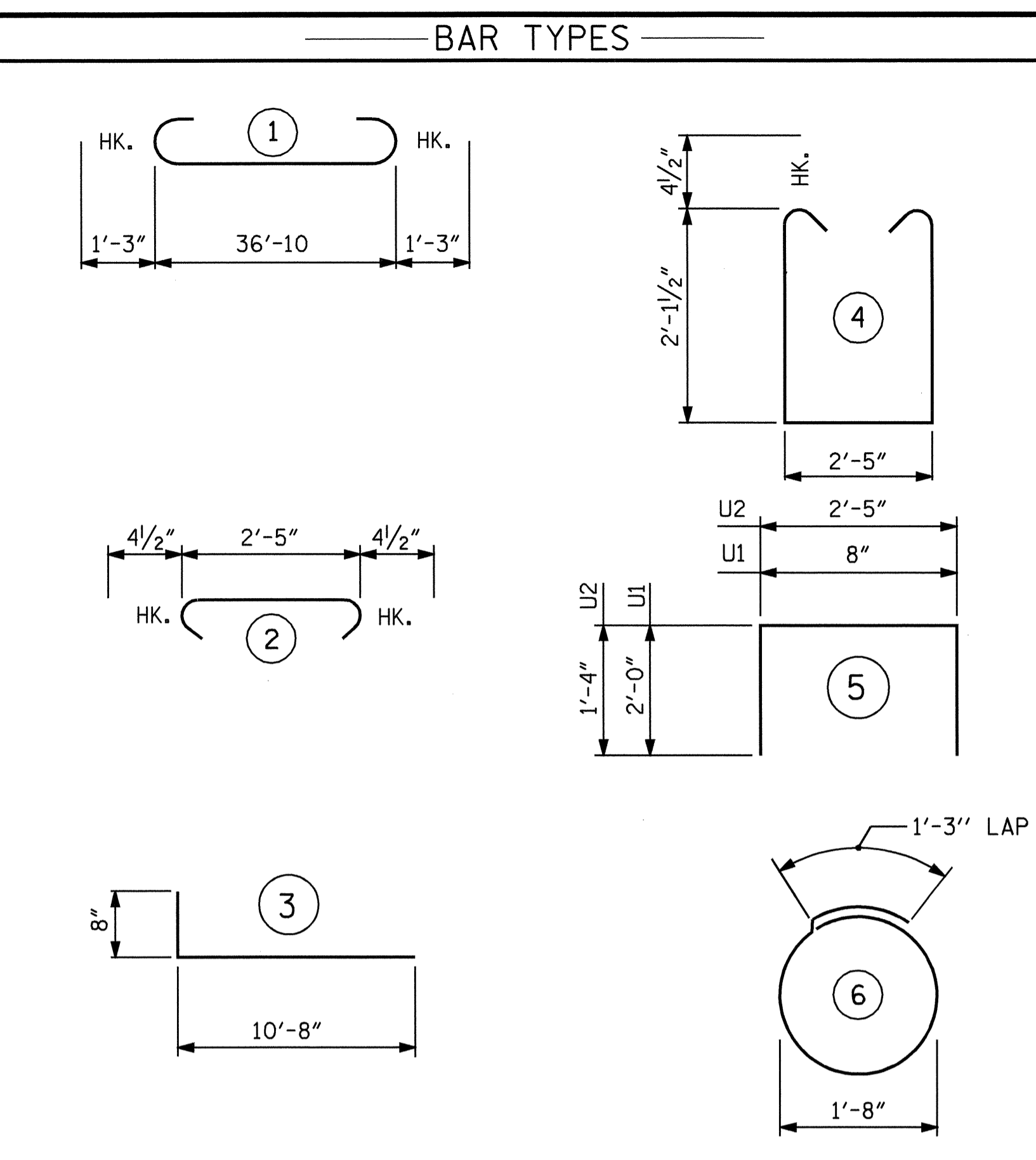


**SECTION A-A**



**PILE SPLICE DETAILS**



ALL BAR DIMENSIONS ARE OUT TO OUT.

**BILL OF MATERIAL**

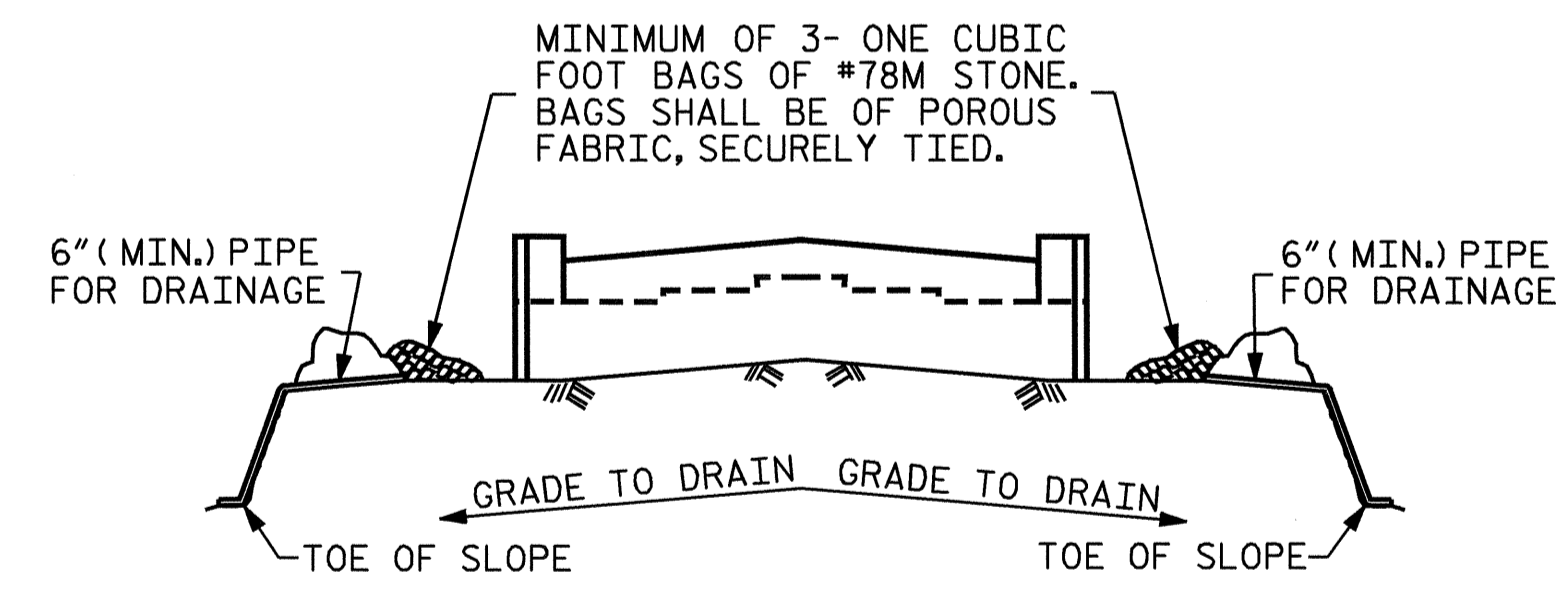
END BENT #1					
BAR	NO.	SIZE	TYPE	LENGTH	WEIGHT
B1	8	9	1	39'-4"	1070
B2	2	5	STR	36'-11"	77
B3	8	4	STR	19'-8"	105
B4	9	4	STR	2'-5"	15
B5	8	4	STR	3'-3"	17
H1	40	6	3	11'-4"	681
K1	20	4	STR	19'-8"	263
K2	8	4	STR	2'-7"	14
S1	36	4	4	7'-5"	178
S2	36	4	2	3'-2"	76
S3	16	4	6	6'-6"	69
U1	32	4	5	4'-8"	100
U2	6	4	5	5'-1"	20
V1	64	5	STR	6'-8"	445
V2	56	5	STR	7'-10"	458

TOTAL REINFORCING STEEL 3588 LBS.

CLASS "A" CONCRETE BREAKDOWN

POUR #1 (CAP & LOWER PART OF WINGS)	CU. YD. 11.6
POUR #2 (BACKWALL & UPPER PART OF WINGS)	CU. YD. 11.0
<b>TOTAL CLASS "A" CONCRETE</b>	<b>CU. YD. 22.6</b>

HP 12 X 53 STEEL PILES  
NO. 8 200 LIN. FEET



BAGGED STONE AND PIPE SHALL BE PLACED IMMEDIATELY AFTER COMPLETION OF END BENT EXCAVATION. PIPE MAY BE EITHER CONCRETE, CORRUGATED STEEL, CORRUGATED ALUMINUM ALLOY, OR CORRUGATED PLASTIC. PERFORATED PIPE WILL NOT BE ALLOWED.

BAGGED STONE SHALL REMAIN IN PLACE UNTIL THE ENGINEER DIRECTS THAT IT BE REMOVED. THE CONTRACTOR SHALL REMOVE AND DISPOSE OF SILT ACCUMULATIONS AT BAGGED STONE WHEN SO DIRECTED BY THE ENGINEER. BAGS SHALL BE REMOVED AND REPLACED WHENEVER THE ENGINEER DETERMINES THAT THEY HAVE DETERIORATED AND LOST THEIR EFFECTIVENESS.

NO SEPARATE PAYMENT WILL BE MADE FOR THIS WORK AND THE ENTIRE COST OF THIS WORK SHALL BE INCLUDED IN THE UNIT CONTRACT PRICE BID FOR THE SEVERAL PAY ITEMS.

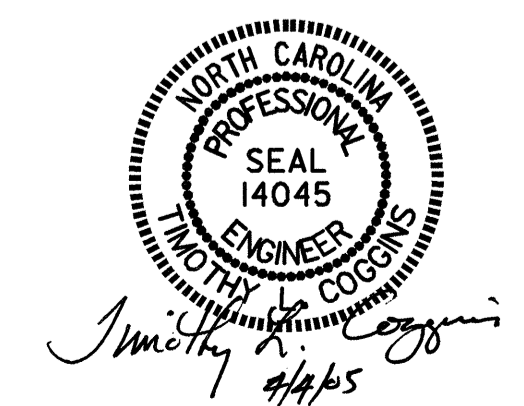
**TEMPORARY DRAINAGE AT END BENT**

PROJECT NO. B-3828  
CLEVELAND COUNTY  
STATION: 14+65.00 -L-

SHEET 3 OF 3

STATE OF NORTH CAROLINA  
DEPARTMENT OF TRANSPORTATION  
RALEIGH

SUBSTRUCTURE  
END BENT #1



REVISIONS					SHEET NO.
NO.	BY:	DATE:	NO.	BY:	DATE:
1			3		
2			4		

TOTAL SHEETS 30