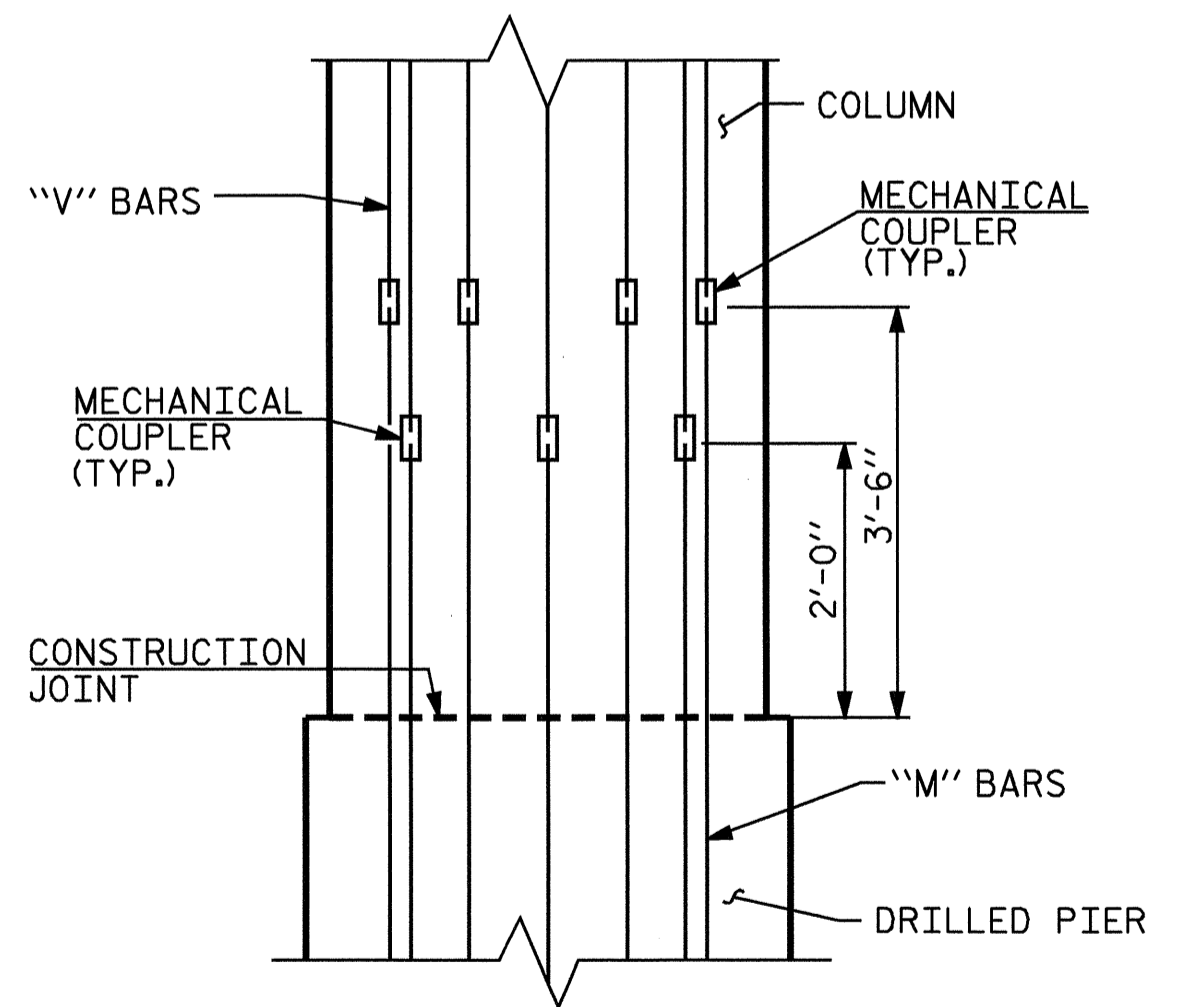
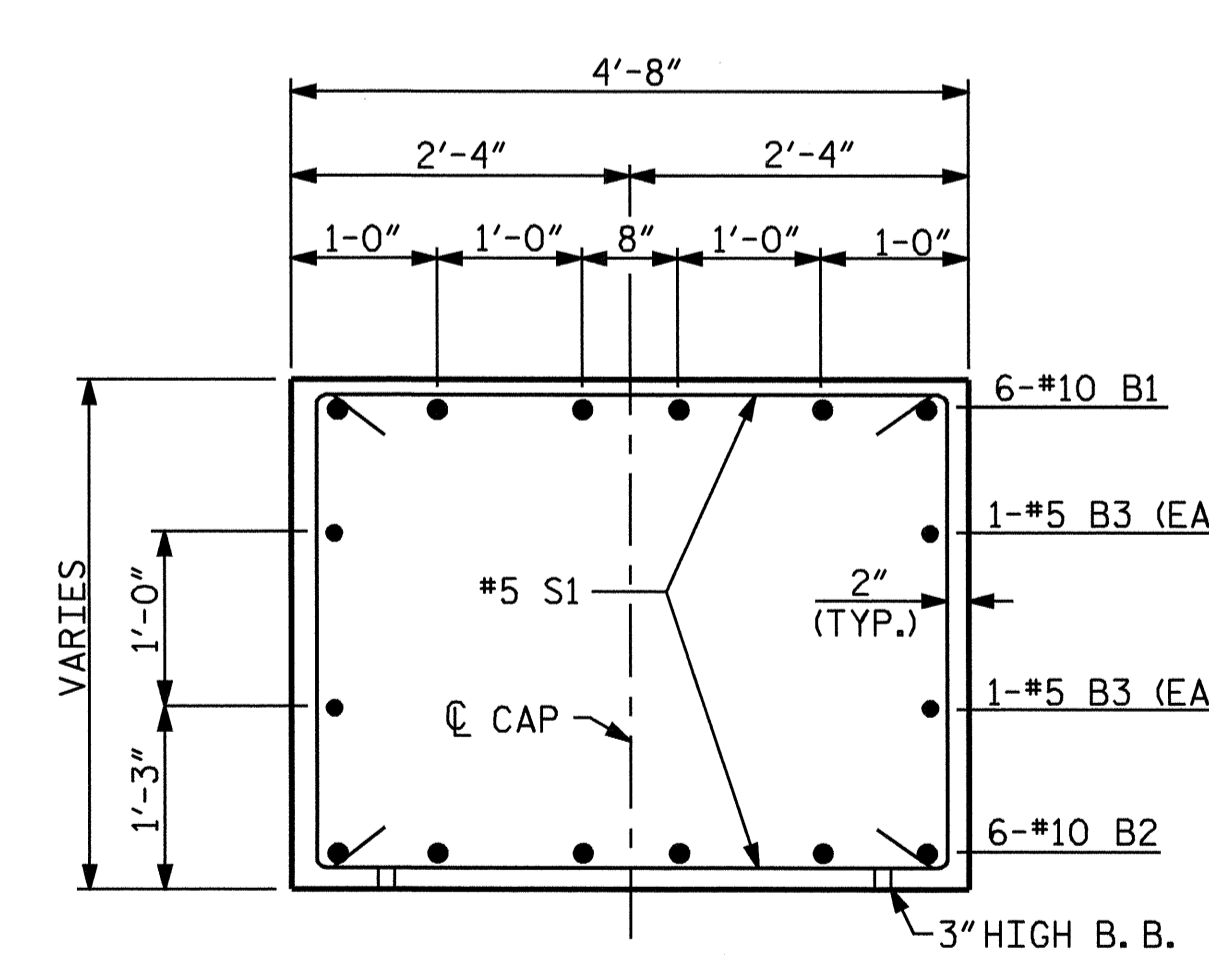


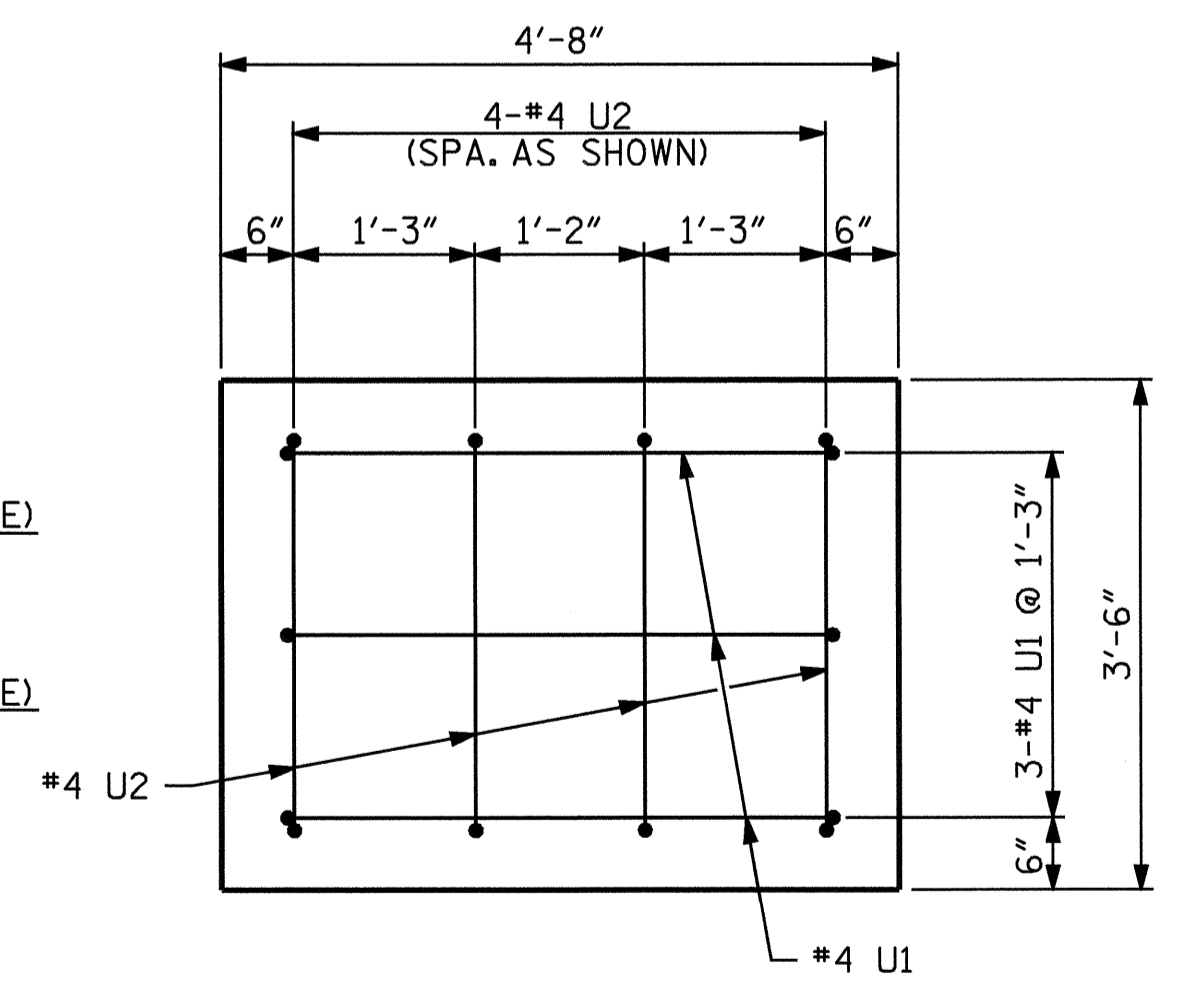
PLAN OF DRILLED PIERS & COLUMNS



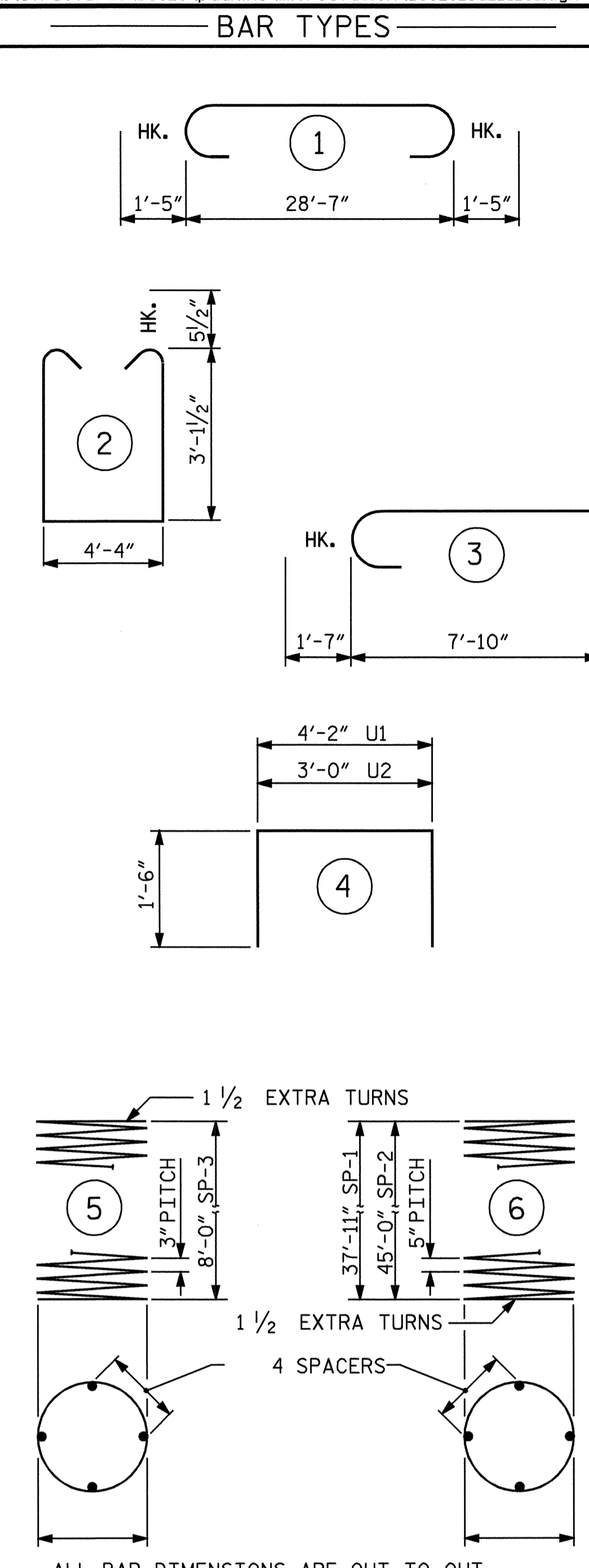
MECHANICAL COUPLER STAGGER DETAIL



SECTION A-A



END VIEW (TYP. EACH END)

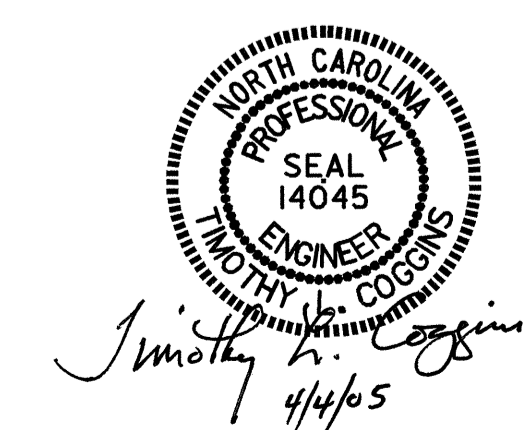


* THE COLUMN SPIRAL REINFORCING STEEL SHALL BE W20 OR D-20 COLD DRAWN WIRE OR #4 PLAIN OR DEFORMED BAR.
 * THE DRILLED PIER SPIRAL REINFORCING STEEL SHALL BE W31 OR D-31 COLD DRAWN WIRE OR #5 PLAIN OR DEFORMED BAR.

BILL OF MATERIAL					
BAR	NO.	SIZE	TYPE	LENGTH	WEIGHT
B1	6	10	1	31'-5"	811
B2	6	10	STR	28'-8"	740
B3	4	5	STR	28'-8"	120
M1	12	11	STR	44'-3"	2821
M2	12	11	STR	51'-4"	3273
S1	31	5	2	11'-6"	372
U1	6	4	4	7'-2"	38
U2	8	4	4	6'-0"	24
V1	24	11	3	9'-5"	1201
REINFORCING STEEL					9400 LBS.
SP-1	1	**	6	1051'-2"	1096
SP-2	1	**	6	1244'-4"	1298
SP-3	2	*	5	381'-8"	510
SPIRAL COLUMN REINFORCING STEEL					2904 LBS.
CLASS "A" CONCRETE BREAKDOWN					
POUR #3 CAP					17.9 CU. YD.
POUR #2 COLUMN					7.2 CU. YD.
TOTAL CLASS "A" CONCRETE					25.1 CU. YD.
DRILLED PIERS					
DRILLED PIER CONCRETE					
POUR #1 DRILLED PIER					49.2 CU. YD.
4'-6" Ø DRILLED PIERS IN SOIL					70.58 LIN. FT.
4'-6" Ø DRILLED PIERS NOT IN SOIL					13.00 LIN. FT.
PERMANENT STEEL CASING FOR 4'-6" Ø DRILLED PIER					62.18 LIN. FT.
SID INSPECTION					1 EACH
CROSSHOLE SONIC LOGGING					1 EACH
CSL TUBES					354.33 LIN. FT.

PROJECT NO. B-3828
CLEVELAND COUNTY
 STATION: 14+65.00 -L-

SHEET 2 OF 2
 STATE OF NORTH CAROLINA
 DEPARTMENT OF TRANSPORTATION
 RALEIGH
 SUBSTRUCTURE
 BENT #1



DRAWN BY: PEGGY ADKINS DATE: 1-05
 CHECKED BY: M.C. KING DATE: 2-05

REVISIONS						SHEET NO.
NO.	BY:	DATE:	NO.	BY:	DATE:	S-19
1			3			TOTAL SHEETS
2			4			30