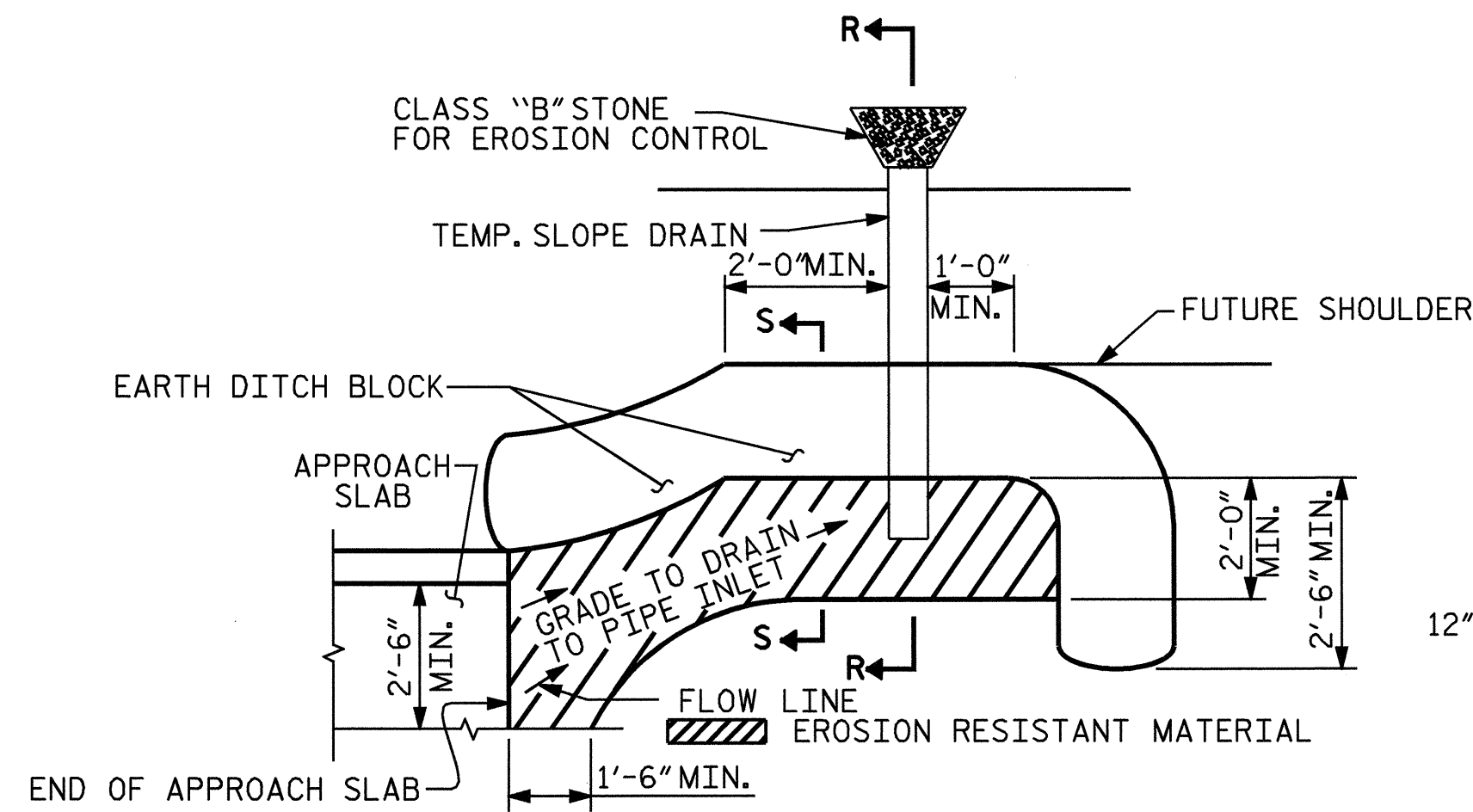


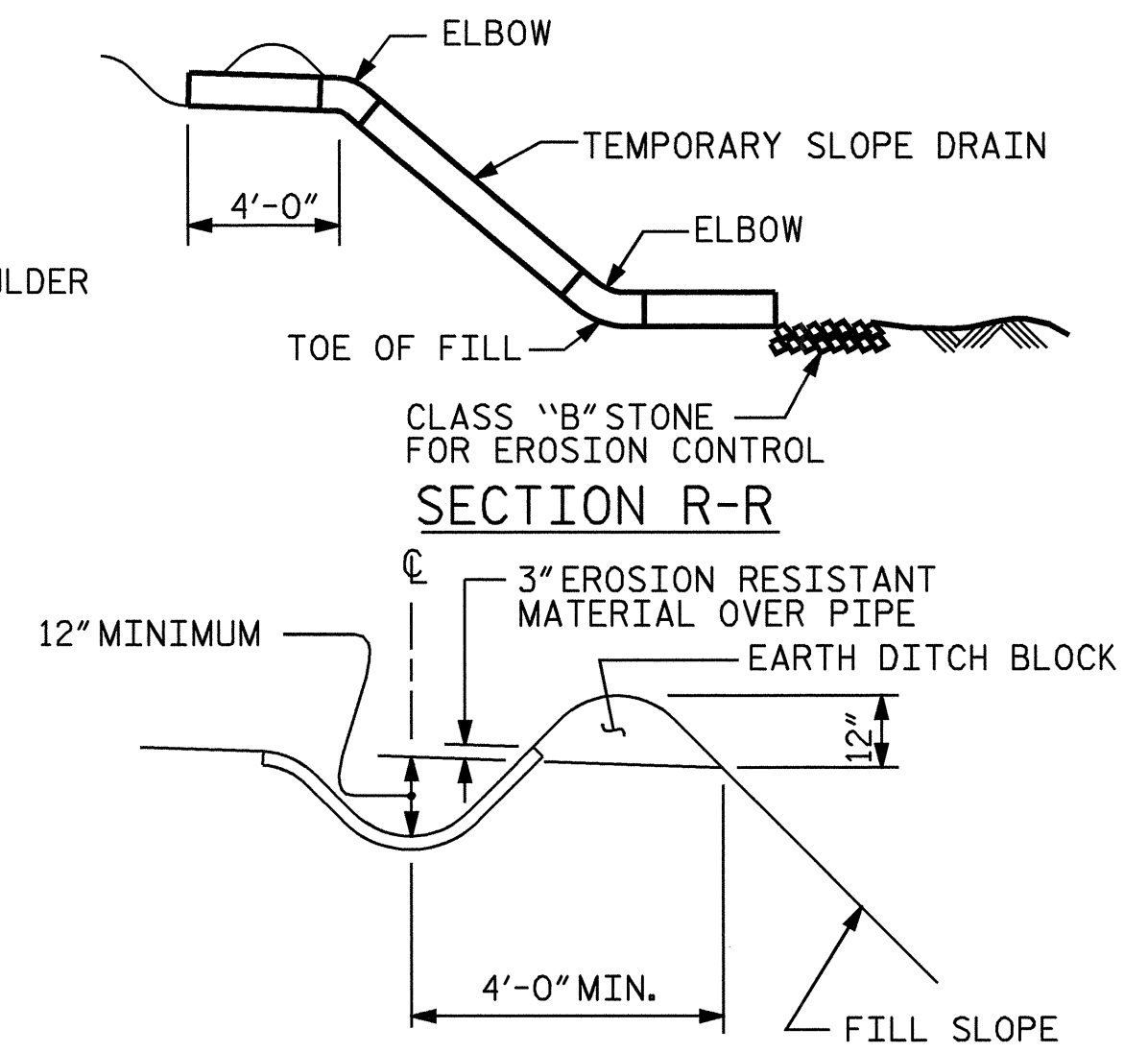
NOTE: IF THE APPROACH SLAB IS NOT CONSTRUCTED IMMEDIATELY AFTER THE BACKFILLING OF THE END BENT EXCAVATION, GRADE TO DRAIN TO THE BOTTOM OF THE SLOPE AND PROVIDE EROSION RESISTANT MATERIAL, SUCH AS FIBERGLASS ROVING OR AS DIRECTED BY THE ENGINEER TO PREVENT SOIL EROSION AND TO PROTECT THE AREA ADJACENT TO THE STRUCTURE. THE CONTRACTOR WILL BE REQUIRED TO REMOVE THESE MATERIALS PRIOR TO CONSTRUCTION OF THE APPROACH SLAB.

TEMPORARY DRAINAGE DETAIL



NOTE: IMMEDIATELY AFTER THE CONSTRUCTION OF THE APPROACH SLAB, THE CONTRACTOR SHALL PROVIDE TEMPORARY BERM AND SLOPE DRAIN. CONTRACTOR SHALL GRADE TO PIPE INLET AND PROVIDE EROSION RESISTANT MATERIAL AS SHOWN. THE EROSION RESISTANT MATERIAL SHALL BE EITHER 1) ASPHALT PLANT MIX, TYPE 1 OR TYPE 2, MIN. 2" DEPTH, 2) EROSION CONTROL MAT, OR 3) CONCRETE, AS DIRECTED BY THE ENGINEER. THE SLOPE DRAIN SHALL CONSIST OF A NON-PERFORATED TEMPORARY DRAINAGE PIPE, 12 INCHES IN DIAMETER.

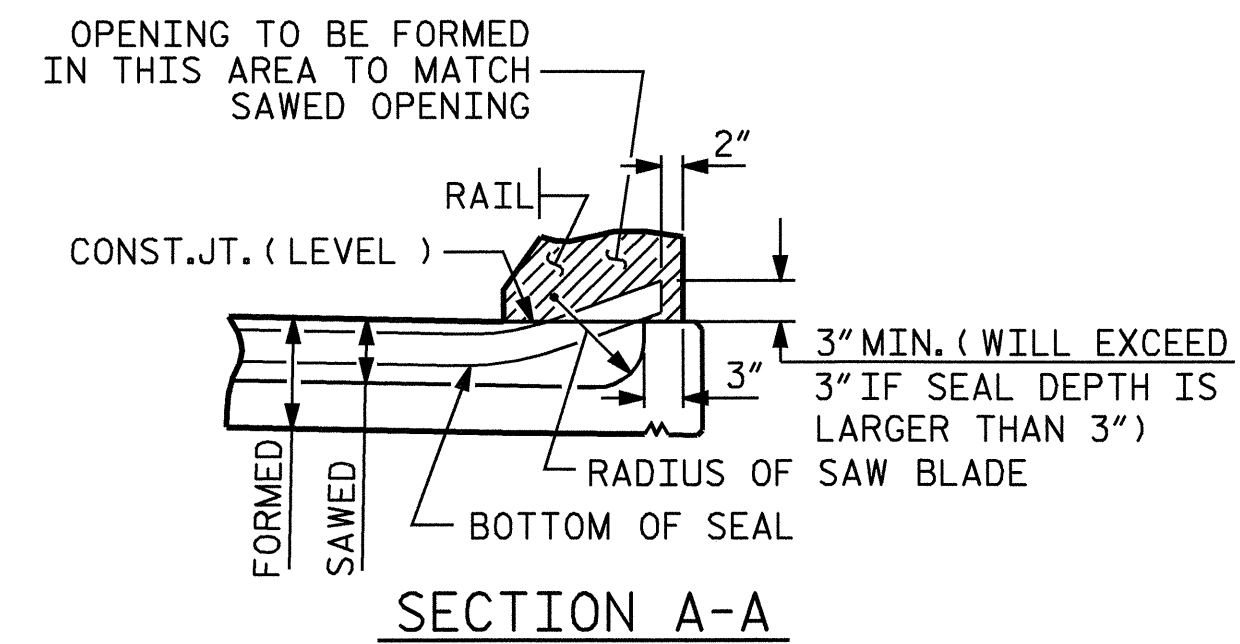
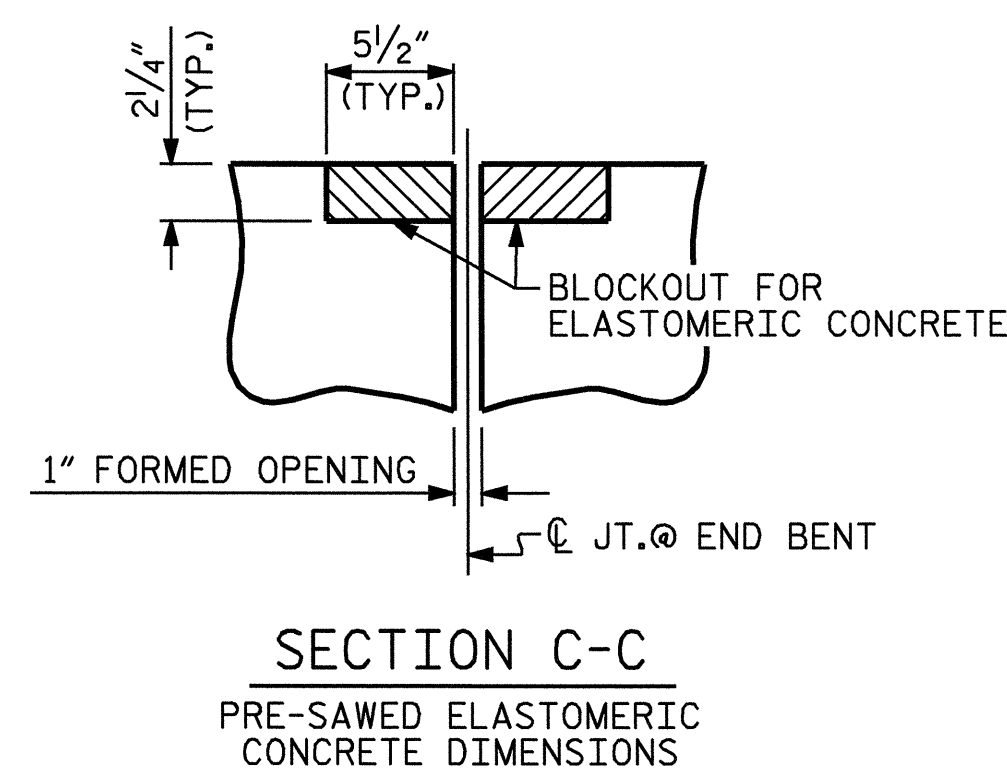
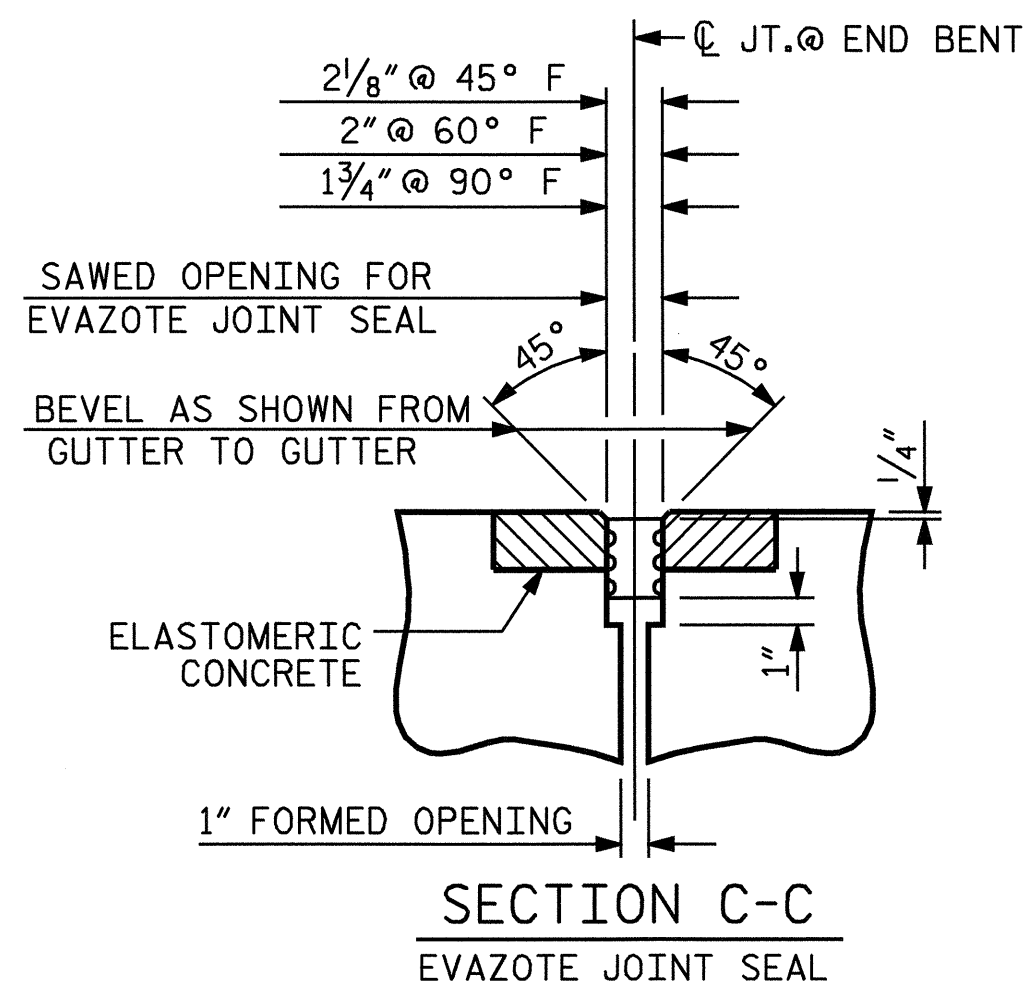
PLAN VIEW



SECTION S-S

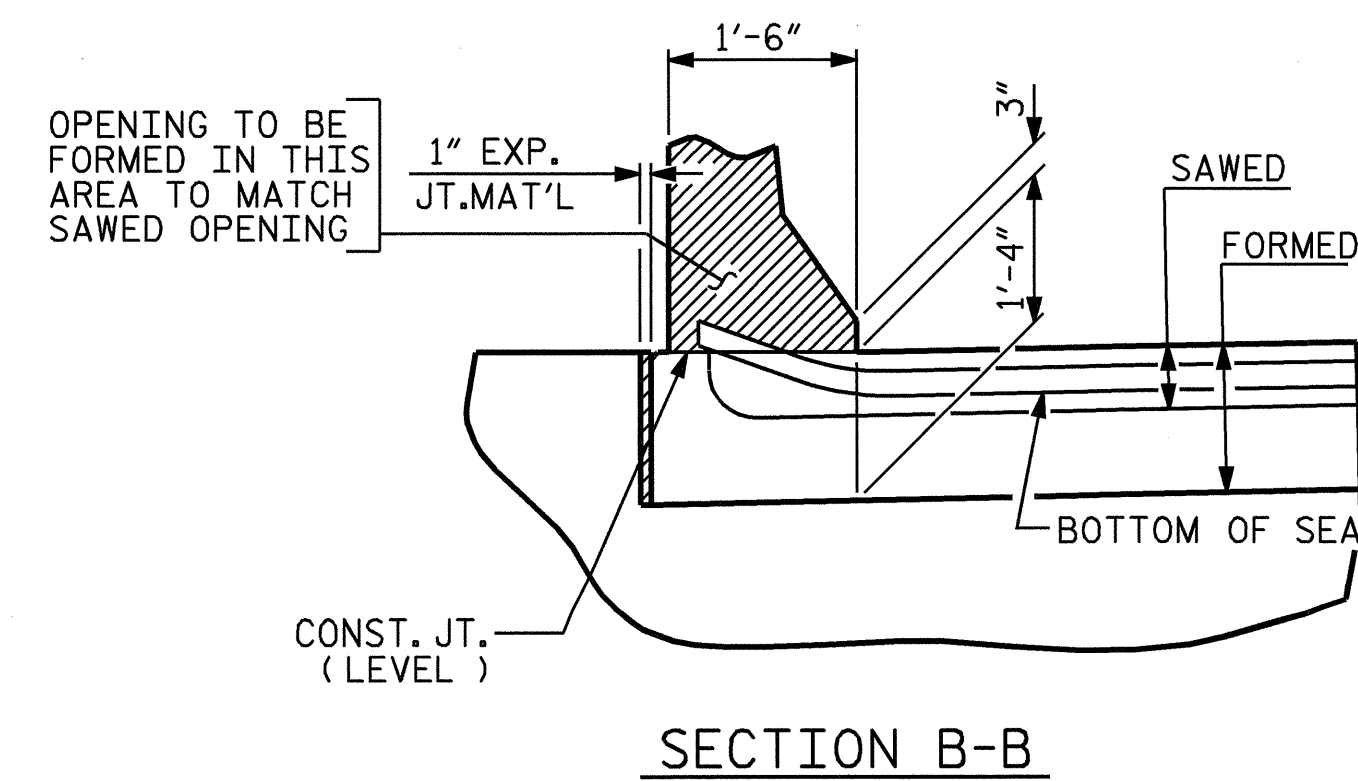
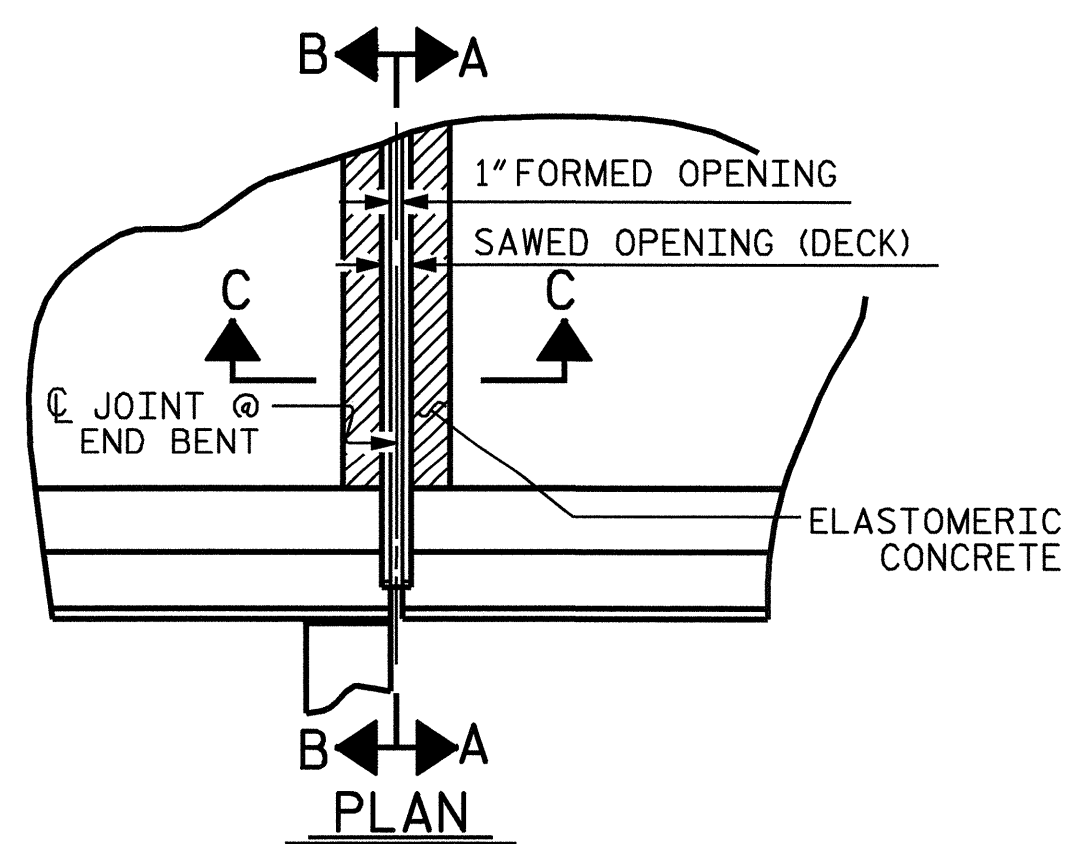
TEMPORARY BERM AND SLOPE DRAIN DETAILS

(TO BE USED WHEN SHOULDER BERM GUTTER IS REQUIRED)



BILL OF MATERIAL	
END BENT NO.	ELASTOMERIC CONCRETE * (CU. FT.)
1	4.8
2	4.8
TOTAL	9.6

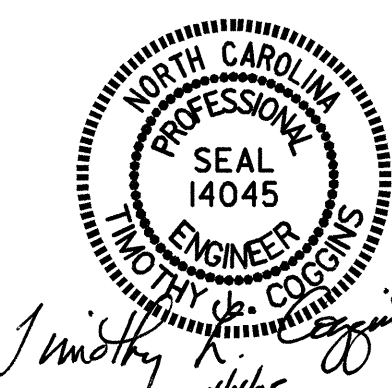
* BASED ON THE MINIMUM BLOCKOUT SHOWN.



JOINT SEAL DETAILS @ END BENT

(FOR BARRIER RAIL)

ASSEMBLED BY : PEGGY ADKINS	DATE : 12-04
CHECKED BY : T. AVERETTE	DATE : 12-04
DRAWN BY : FCJ	11/88
CHECKED BY : ARB	11/88
REV. 8/16/99	MAB/LES
REV. 10/17/00	RWW/LES
REV. 5/7/03	RWW/JTE



PROJECT NO. B-3828
CLEVELAND COUNTY
STATION: 14+65.00 -L-

SHEET 4 OF 4

STATE OF NORTH CAROLINA
DEPARTMENT OF TRANSPORTATION
RALEIGH

**BRIDGE APPROACH
SLAB DETAILS**

REVISIONS						SHEET NO.	
NO.	BY:	DATE:	NO.	BY:	DATE:	S-27	
1			3			TOTAL SHEETS 30	
2			4				