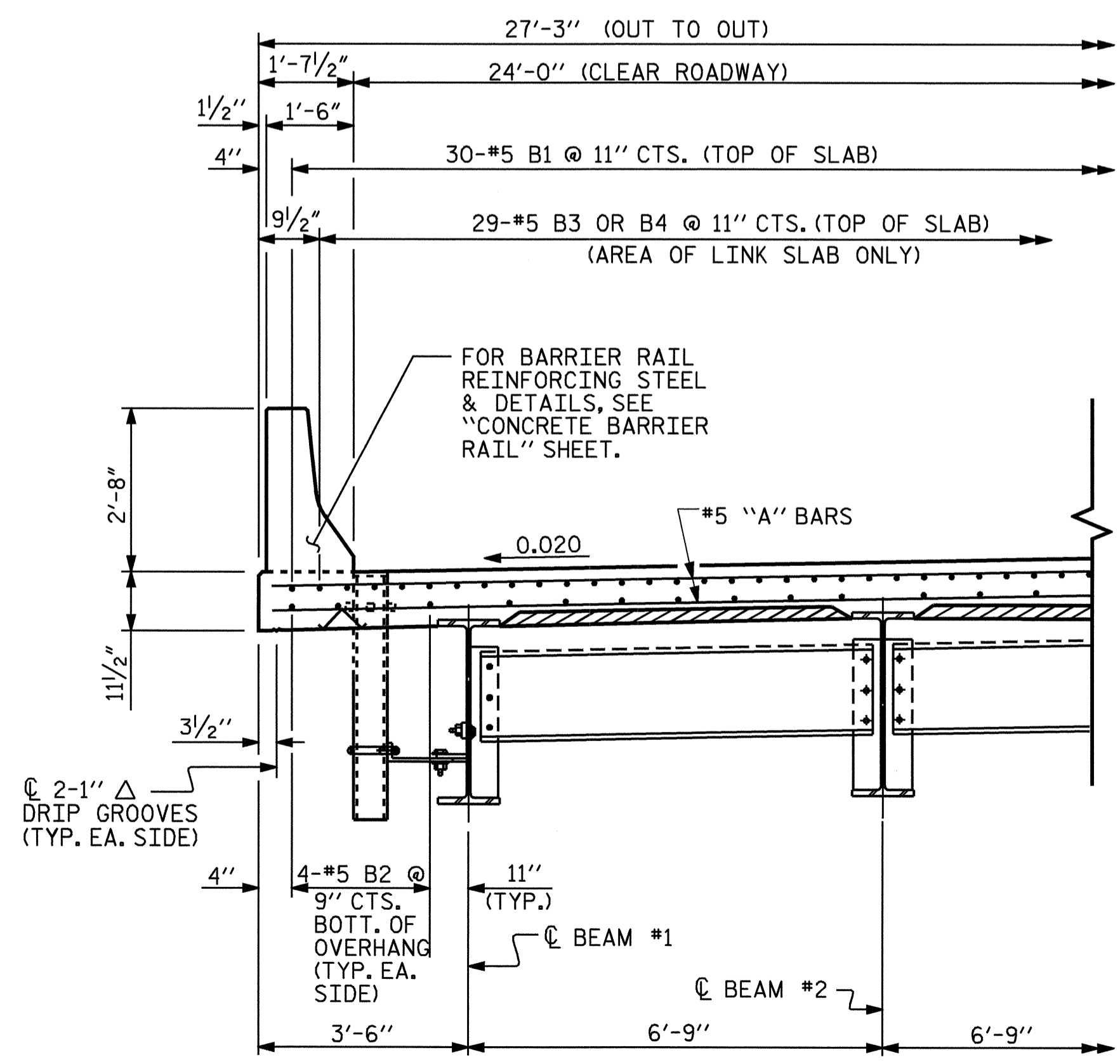


HALF TYPICAL SECTION

SHOWING END BENT DIAPHRAGMS

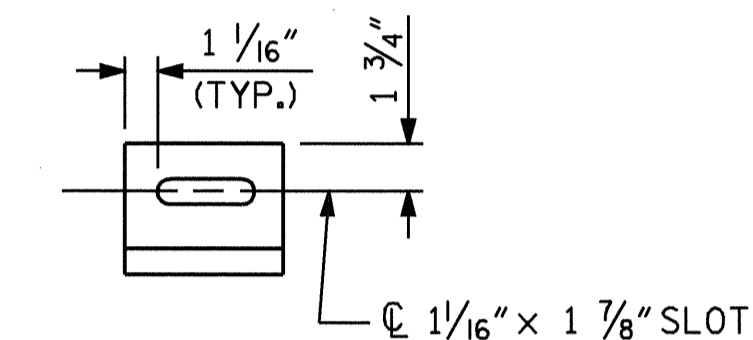
HALF TYPICAL SECTION

SHOWING INTERMEDIATE DIAPHRAGMS

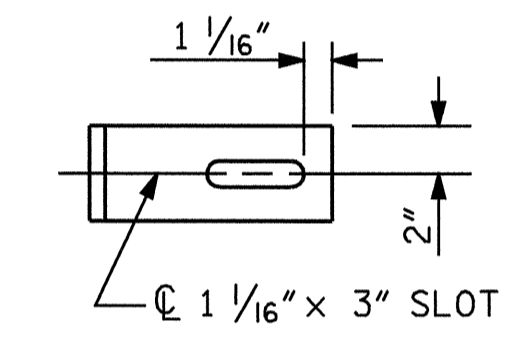


HALF SECTION @ LINK SLAB

(LINK SLAB ONLY REQUIRED AT BENTS)



SECTION B-B



SECTION A-A

DRAIN CONNECTOR DETAIL

(40 REQUIRED)

COUPLING IN DRAIN PIPE WILL BE PERMITTED AS APPROVED BY THE ENGINEER.

TOP OF FLOOR DRAIN TO BE SET 3/8" BELOW SURFACE OF SLAB.

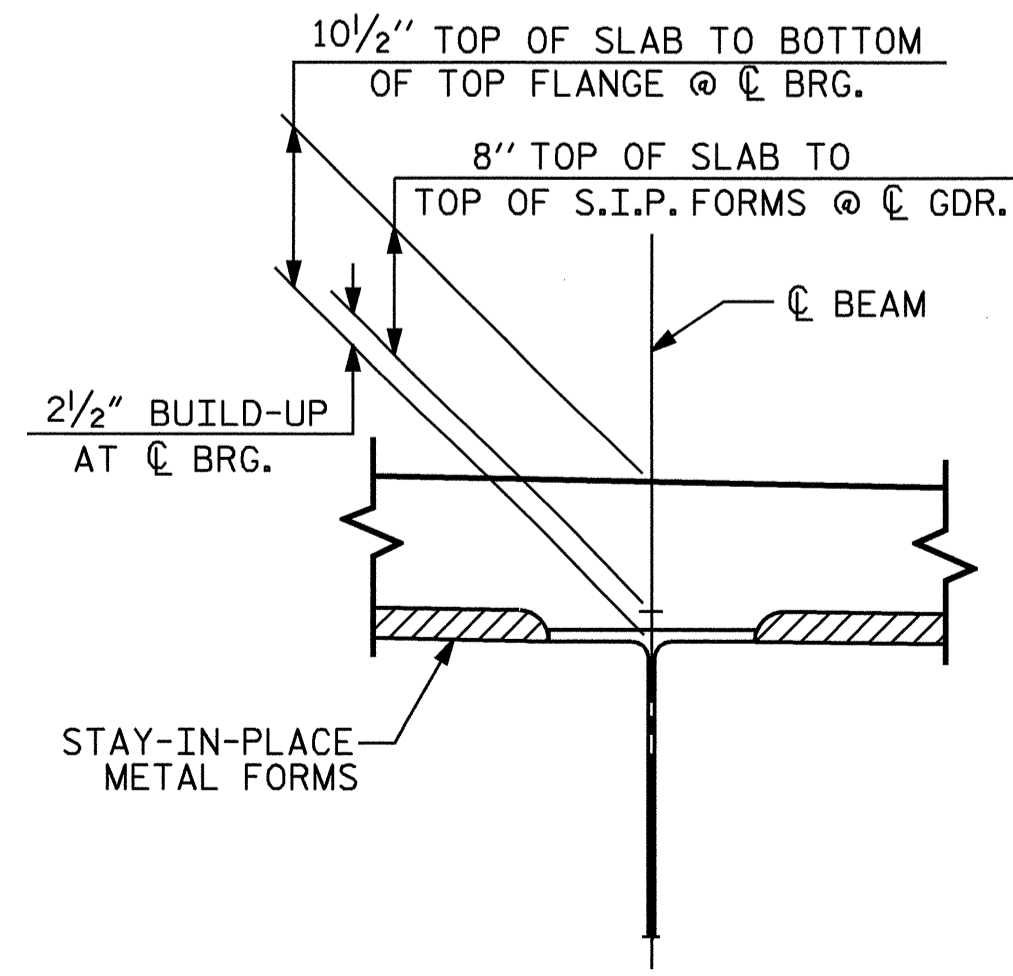
4 - 1/2" SQUARE LUGS TO BE GLUED TO THE PVC PLASTIC PIPE AT EQUAL SPACES AROUND THE PIPE DRAIN APPROXIMATELY 4" FROM THE TOP OF THE PIPE.

BOLT SIZE TO BE SAME AS DIAPHRAGM AND CROSSFRAME CONNECTIONS. STAINLESS STEEL WORM DRIVE HOSE CLAMP SHALL BE COMMERCIAL QUALITY.

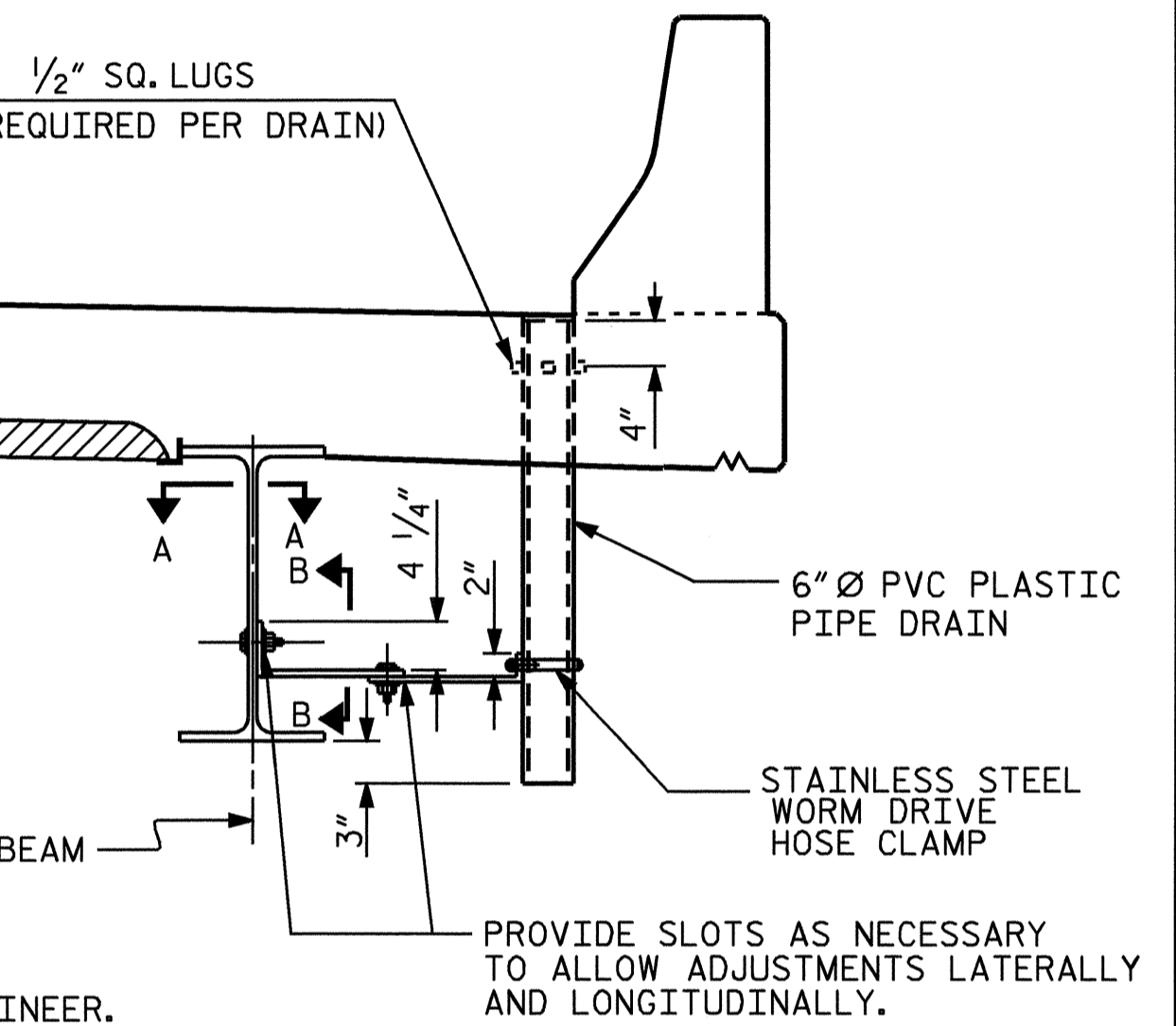
PLATES SHALL CONFORM TO AASHTO M270 GRADE 36 STEEL OR APPROVED EQUAL.

NO SEPARATE PAYMENT SHALL BE MADE FOR FURNISHING AND INSTALLING PVC PLASTIC PIPE DRAINS. THE COST FOR THIS WORK SHALL BE INCLUDED IN THE PRICE BID FOR REINFORCED CONCRETE DECK SLAB.

THE 6" DIAMETER PVC PIPE AND FITTINGS SHALL BE SCHEDULE 40 AND CONFORM TO ASTM D1785.



DETAIL "A"



PROVIDE SLOTS AS NECESSARY TO ALLOW ADJUSTMENTS Laterally AND LONGITUDINALLY.

NOTES:
PROVIDE 1 1/4" HIGH BEAM BOLSTERS UPPER AT 4'-0" CTS. ATOP THE METAL STAY-IN-PLACE FORMS TO SUPPORT THE BOTTOM MAT OF 'A' BARS. WHEN USING REMOVABLE FORMS, PROVIDE CONTINUOUS HIGH CHAIRS FOR METAL DECK (C.H.C.M.) @ 4'-0" CTS. WITH A HEIGHT TO SUPPORT THE BOTTOM MAT OF 'A' BARS A CLEAR DISTANCE OF 2 1/2" ABOVE THE TOP OF THE REMOVABLE FORM.

BARRIER RAIL IN A CONTINUOUS UNIT SHALL NOT BE CAST UNTIL ALL SLAB CONCRETE IN THE UNIT HAS BEEN CAST AND HAS REACHED A MINIMUM COMPRESSIVE STRENGTH OF 3,000 PSI.

THE CONTRACTOR MAY, WHEN NECESSARY, PROPOSE A SCHEME FOR AVOIDING INTERFERENCE BETWEEN METAL STAY-IN-PLACE FORM SUPPORTS OR FORMS AND BEAM/GIRDER STIFFENERS OR CONNECTOR PLATES. THE PROPOSAL SHALL BE INDICATED, AS APPROPRIATE, ON EITHER THE STEEL WORKING DRAWINGS OR THE METAL STAY-IN-PLACE FORM WORKING DRAWINGS.

THE TOP OF THE BEAM IN THE REGION OF LINK SLAB SHALL BE SMOOTH AND FREE OF SHEAR STUDS. NO WELDING OF THE FORMS OR FALSEWORK TO TOP FLANGE WILL BE PERMITTED IN THIS REGION.

PROJECT NO. B-2905
ASHE COUNTY
STATION: 19+05.00 -L-

SHEET 1 OF 2

STATE OF NORTH CAROLINA
DEPARTMENT OF TRANSPORTATION
RALEIGH
SUPERSTRUCTURE
TYPICAL SECTION



REVISIONS						SHEET NO.	
NO.	BY:	DATE:	NO.	BY:	DATE:	S-5	
1			3			TOTAL SHEETS	
2			4			35	

DRAWN BY: QT NGUYEN DATE: 11-00
CHECKED BY: V.X. NGUYEN DATE: 8-01