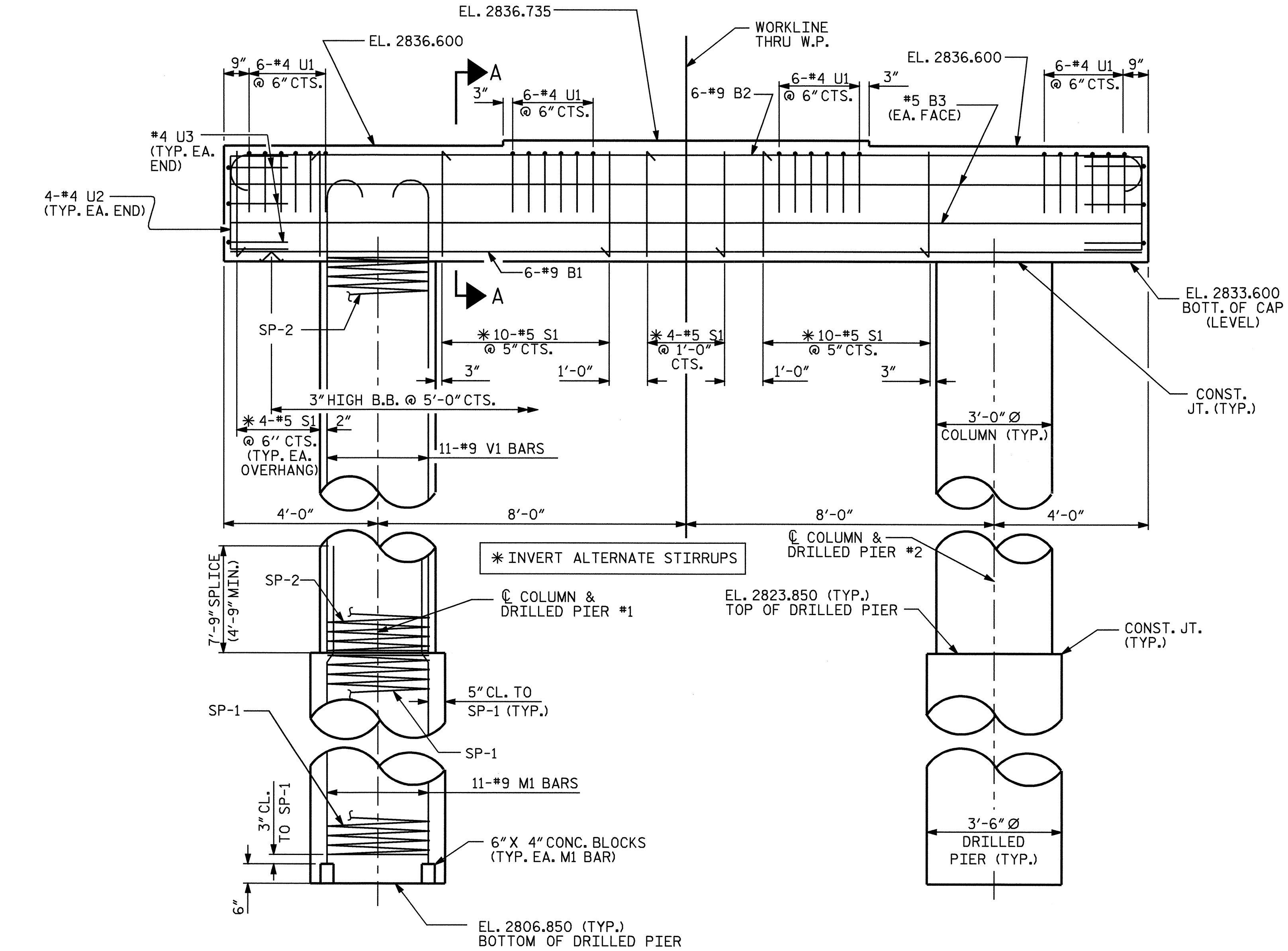


SPAN B

SPAN A

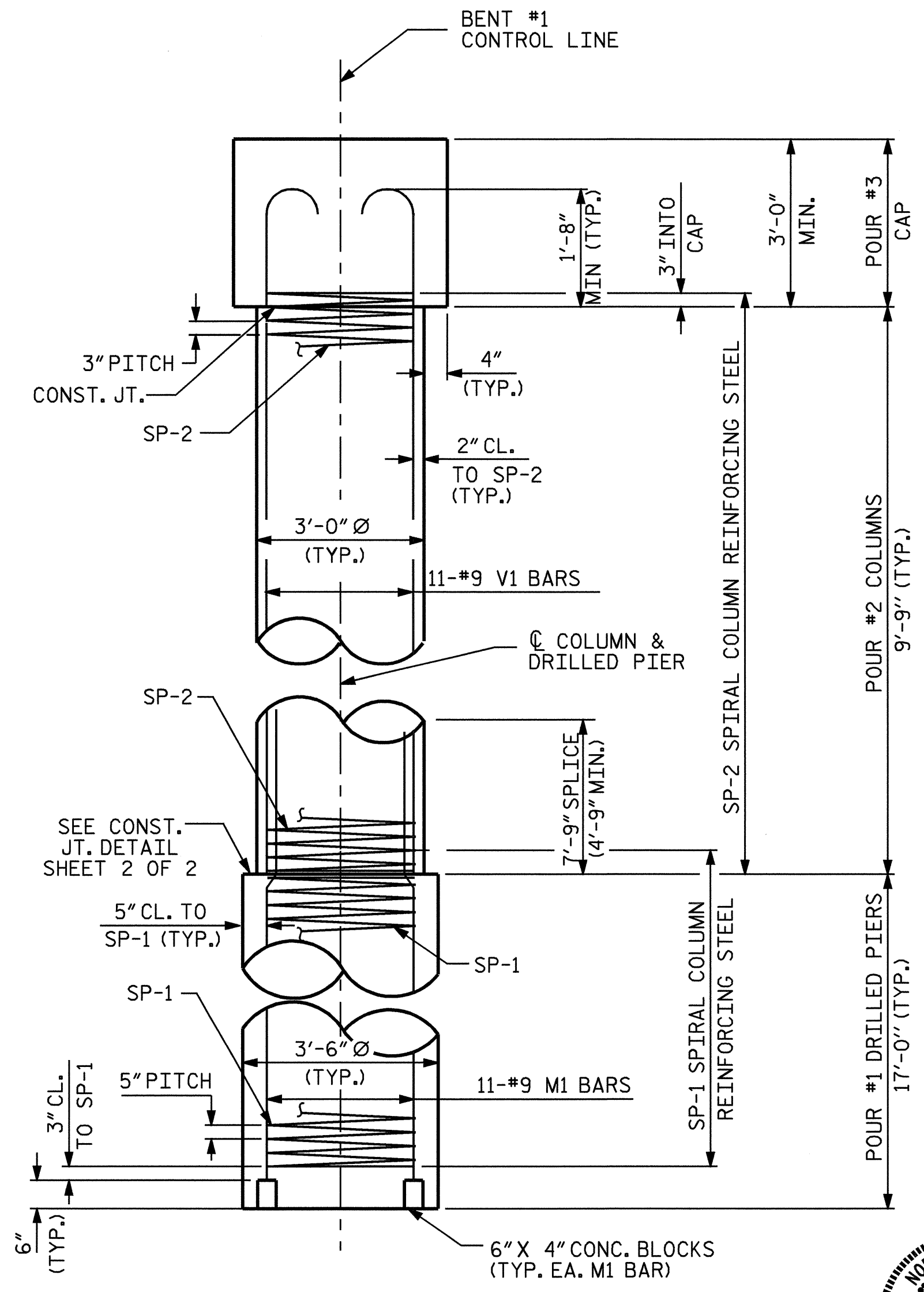
NOTES

- STIRRUPS IN CAP MAY BE SHIFTED AS NECESSARY TO CLEAR ANCHOR BOLTS.
- HOOKS ON "V" BARS MAY BE TURNED AS NECESSARY FOR PLACING REINFORCING STEEL.
- FOR DRILLED PIERS, SEE SPECIAL PROVISIONS.
- ALL STEEL IN THE DRILLED PIER IS INCLUDED IN THE PAY ITEMS FOR "REINFORCING STEEL" AND "SPIRAL COLUMN REINFORCING STEEL".
- THE CONTRACTOR'S ATTENTION IS CALLED TO THE FACT THAT THE LONGITUDINAL REINFORCEMENT FOR THE DRILLED PIERS IS DETAILED WITH 3 FEET OF EXTRA LENGTH.
- SPLICING OF THE LONGITUDINAL BARS IN THE DRILLED PIERS WILL BE PERMITTED.
- THE LOCATION OF THE CONSTRUCTION JOINT IN THE DRILLED PIERS IS BASED ON AN APPROXIMATE GROUND LINE ELEVATION. IF THE CONSTRUCTION JOINT IS ABOVE THE ACTUAL GROUND LINE ELEVATION, THE CONTRACTOR SHALL PLACE THE CONSTRUCTION JOINT 1 FOOT BELOW THE GROUND LINE.



ELEVATION

DIMENSIONS AND REINFORCING STEEL ARE TYP. FOR EA. COLUMN & DRILLED PIER.



END ELEVATION

PROJECT NO. B-2905
ASHE COUNTY
 STATION: 19+05.00 -L-
 SHEET 1 OF 2

STATE OF NORTH CAROLINA DEPARTMENT OF TRANSPORTATION RALEIGH					
SUBSTRUCTURE BENT #1					
REVISIONS					SHEET NO.
NO.	BY:	DATE:	NO.	BY:	DATE:
1			3		
2			4		
					S-21
					TOTAL SHEETS 35



DRAWN BY : R.H. NORMANDY/CRY DATE : 01/05
 CHECKED BY : MG CHEEK DATE : 01/05