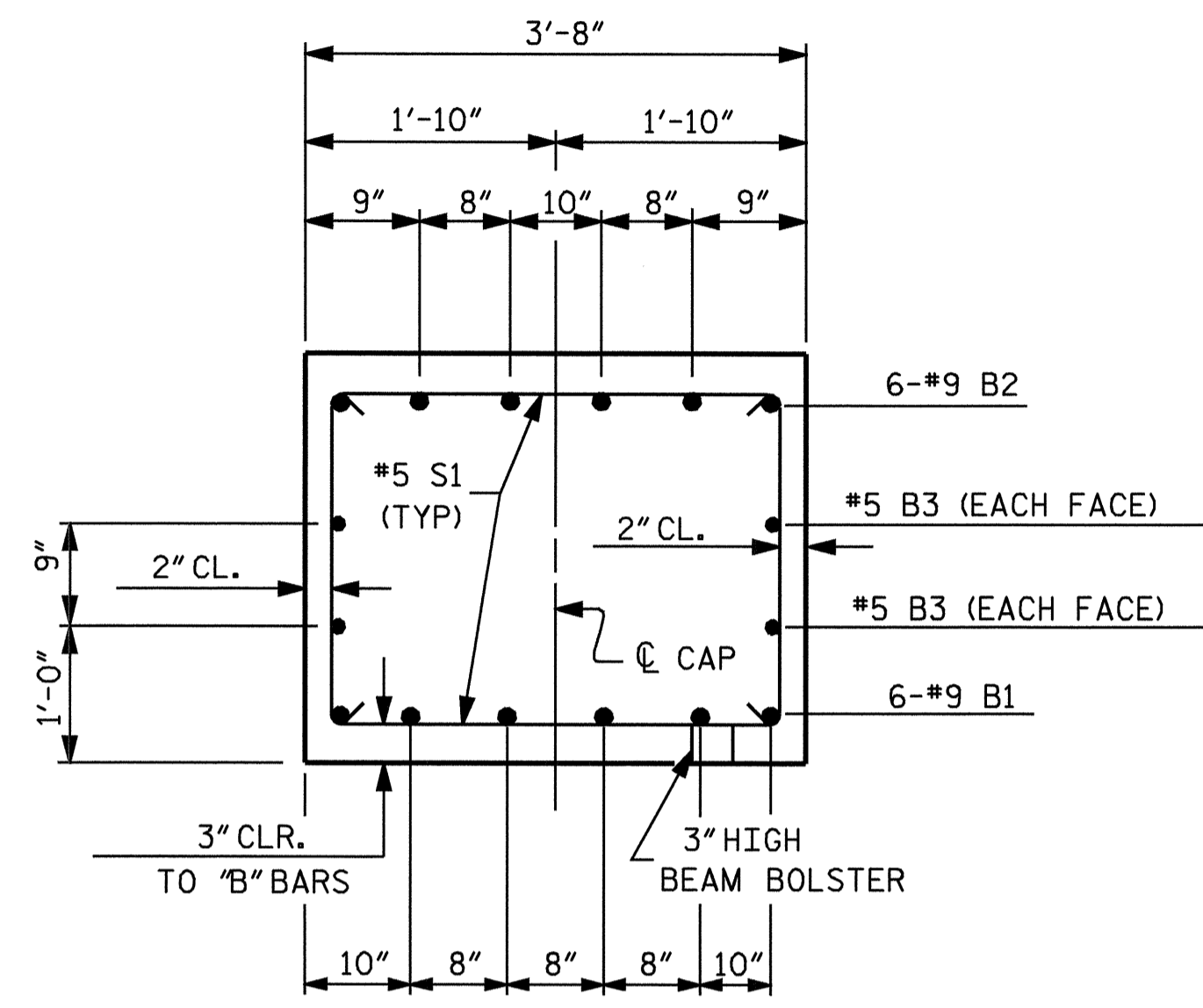
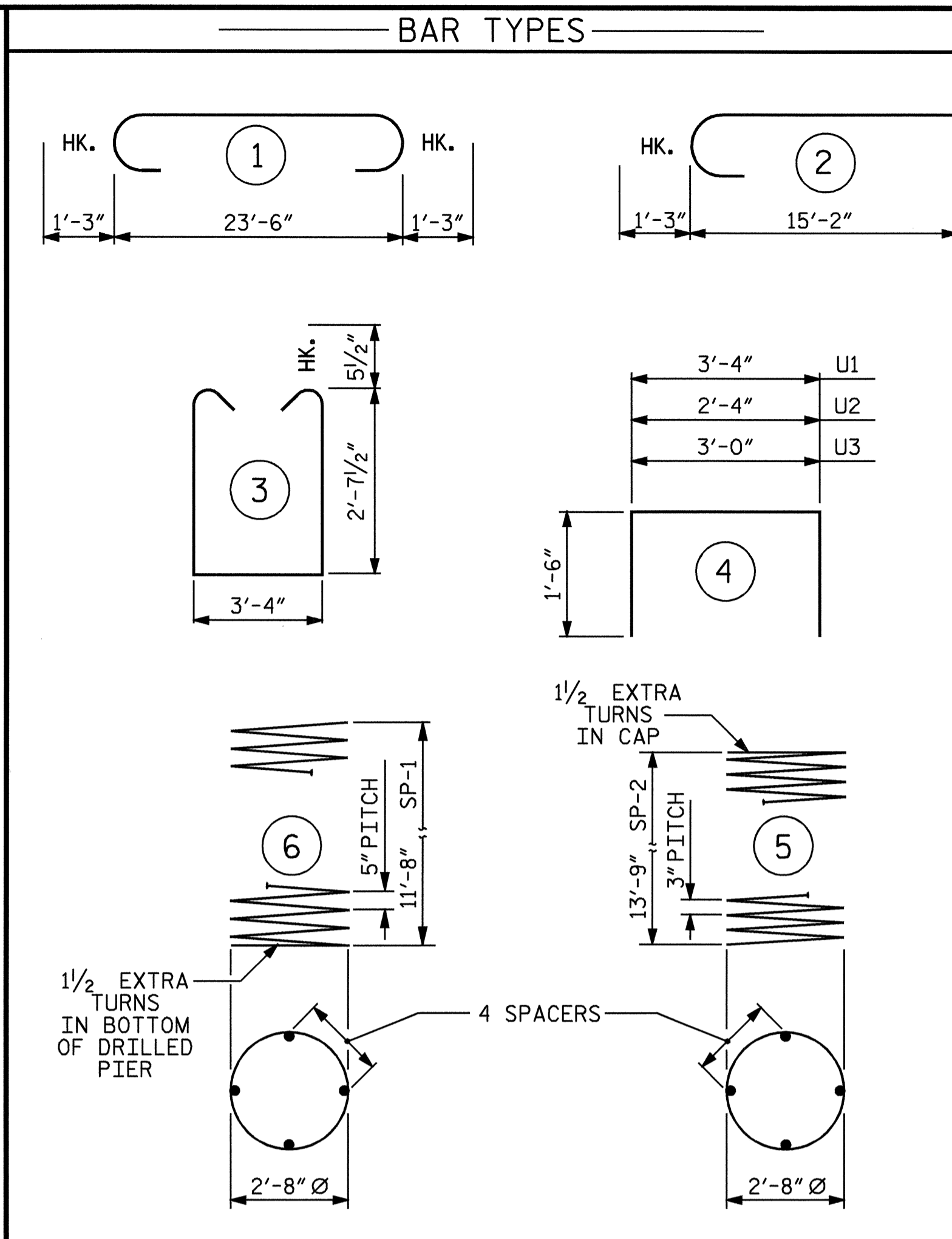


END OF CAP VIEW



SECTION A-A



ALL BAR DIMENSIONS ARE OUT TO OUT.

BILL OF MATERIAL  
BENT #2

BAR	NO.	SIZE	TYPE	LENGTH	WEIGHT
B1	6	#9	STR	23'-8"	483
B2	6	#9	1	26'-0"	530
B3	4	#5	STR	23'-8"	99
M1	22	#9	STR	19'-7"	1465
S1	32	#5	3	9'-6"	317
U1	24	#4	4	6'-4"	102
U2	8	#4	4	5'-4"	29
U3	6	#4	4	6'-0"	24
V1	22	#9	2	16'-5"	1228
SP-1	2	▲▲	6	246'-9"	515
SP-2	2	▲	5	466'-2"	623

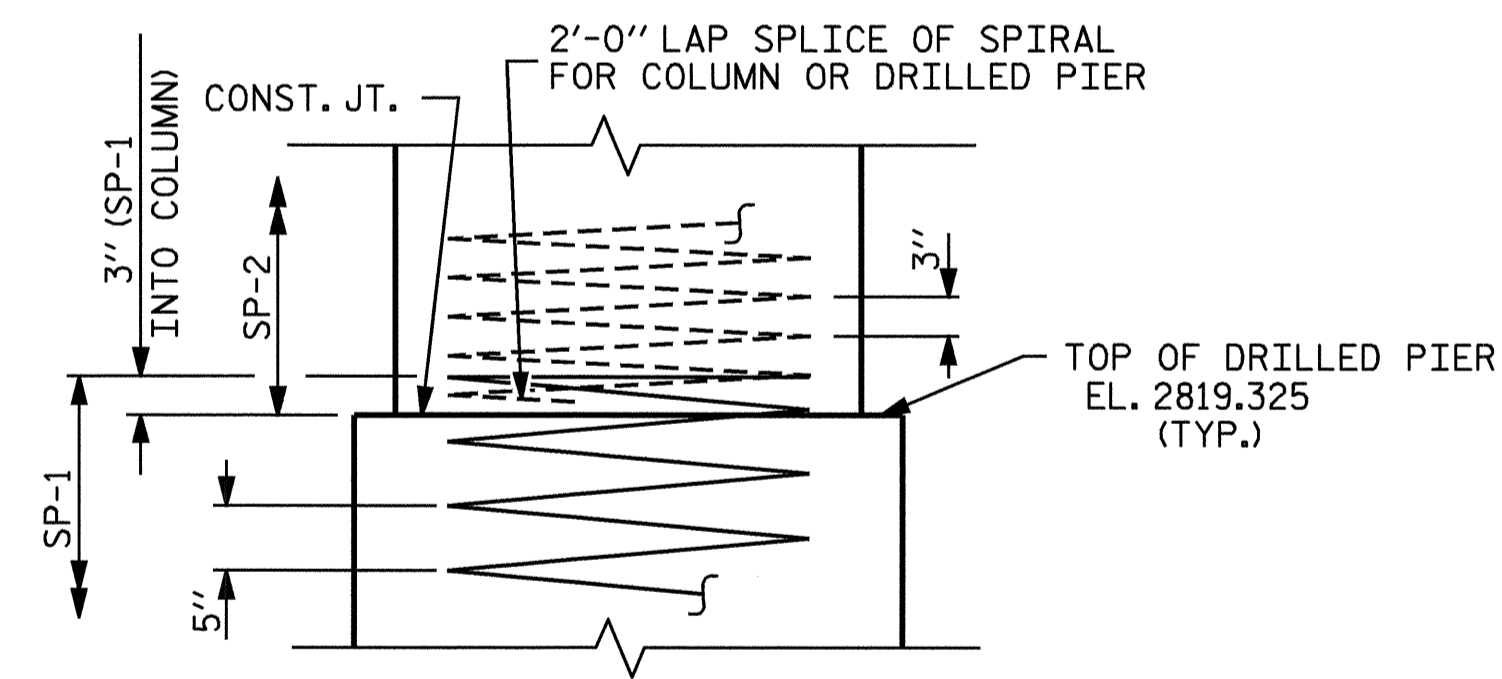
REINFORCING STEEL = 4277 LBS  
SPIRAL REINFORCING STEEL = 1138 LBS  
▲ THE SP-2 SPIRAL REINFORCING STEEL SHALL BE W20 OR D-20 COLD DRAWN WIRE OR #4 PLAIN OR DEFORMED BAR.  
▲▲ THE SP-1 SPIRAL REINFORCING STEEL SHALL BE W31 OR D-31 COLD DRAWN WIRE OR #5 PLAIN OR DEFORMED BAR.

CLASS "A" CONCRETE BREAKDOWN

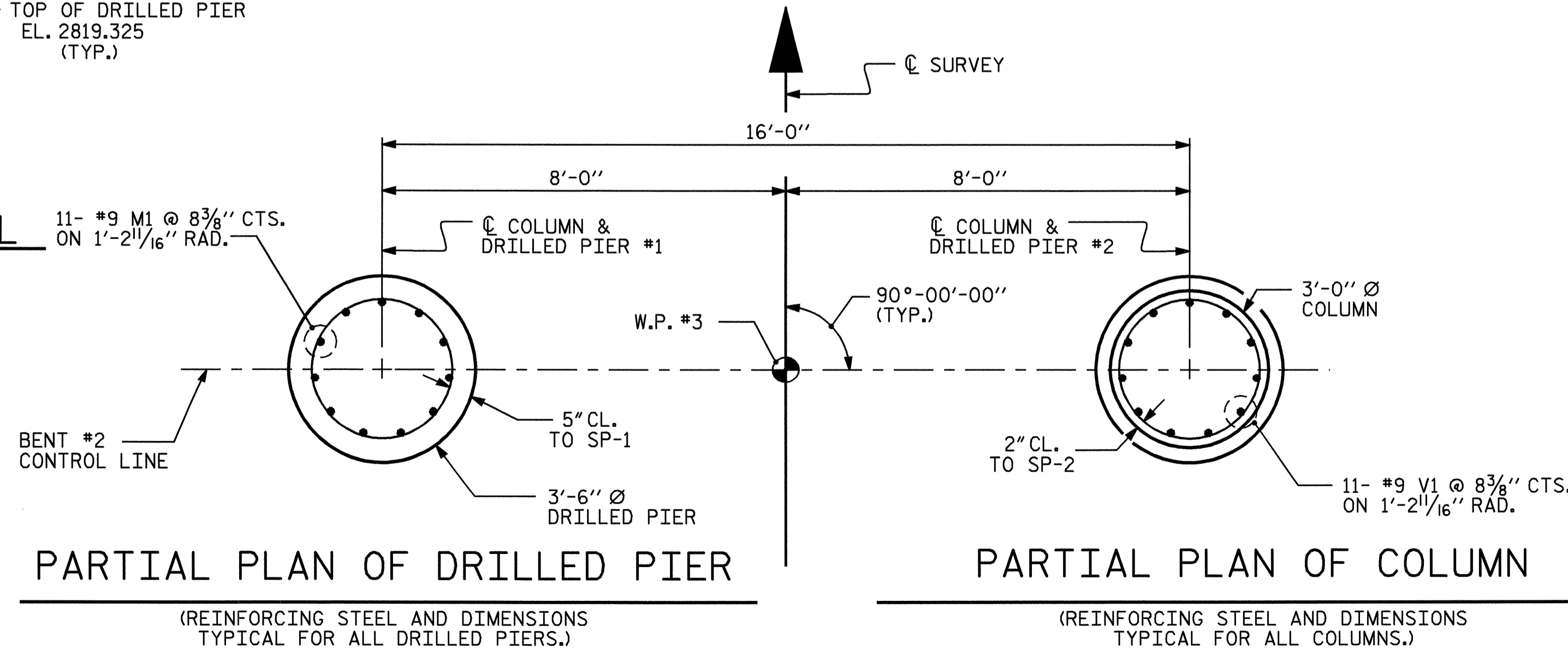
POUR #2 (COLUMNS)	7.1 CY
POUR #3 (CAP)	10.0 CY
TOTAL	17.1 CY

DRILLED PIER QUANTITIES

DRILLED PIER CONCRETE	
POUR #1 (DRILLED PIERS)	8.8 CY
3'-6" Ø DRILLED PIERS IN SOIL	6.67 LIN. FT.
3'-6" Ø DRILLED PIERS NOT IN SOIL	18.00 LIN. FT.
3'-6" Ø PERMANENT STEEL CASING	2.67 LIN. FT.
CROSSHOLE SONIC LOGGING	1 EA.
CSL TUBES	118.67 LIN. FT.



CONSTRUCTION JOINT DETAIL



PARTIAL PLAN OF DRILLED PIER

PARTIAL PLAN OF COLUMN

(REINFORCING STEEL AND DIMENSIONS TYPICAL FOR ALL DRILLED PIERS.)

(REINFORCING STEEL AND DIMENSIONS TYPICAL FOR ALL COLUMNS.)

PROJECT NO. B-2905  
ASHE COUNTY  
STATION: 19+05.00 -L-  
SHEET 2 OF 2

STATE OF NORTH CAROLINA  
DEPARTMENT OF TRANSPORTATION  
RALEIGH  
SUBSTRUCTURE

BENT #2



REVISIONS				SHEET NO.	
NO.	BY:	DATE:	NO.	BY:	DATE:
1			3		
2			4		