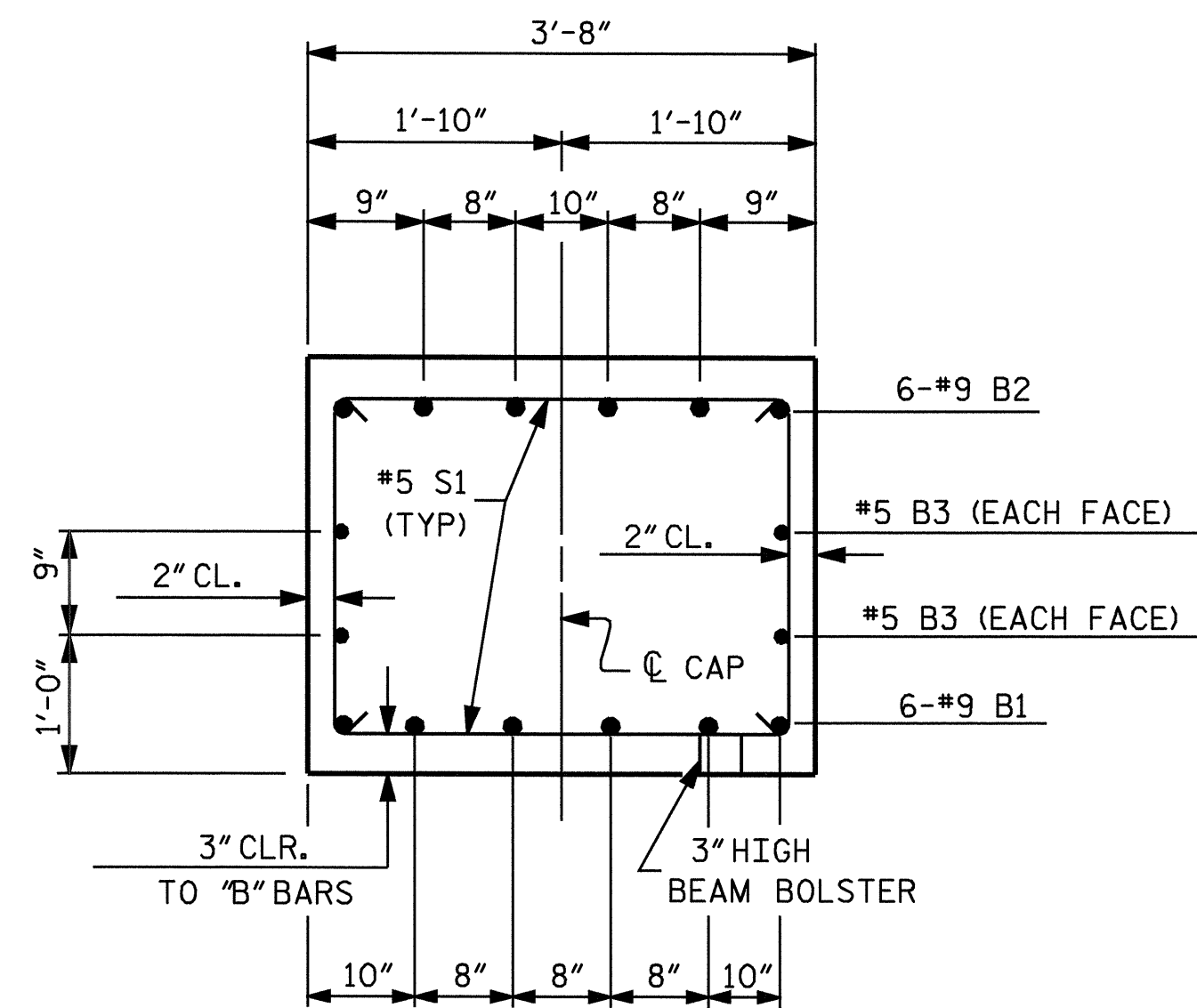
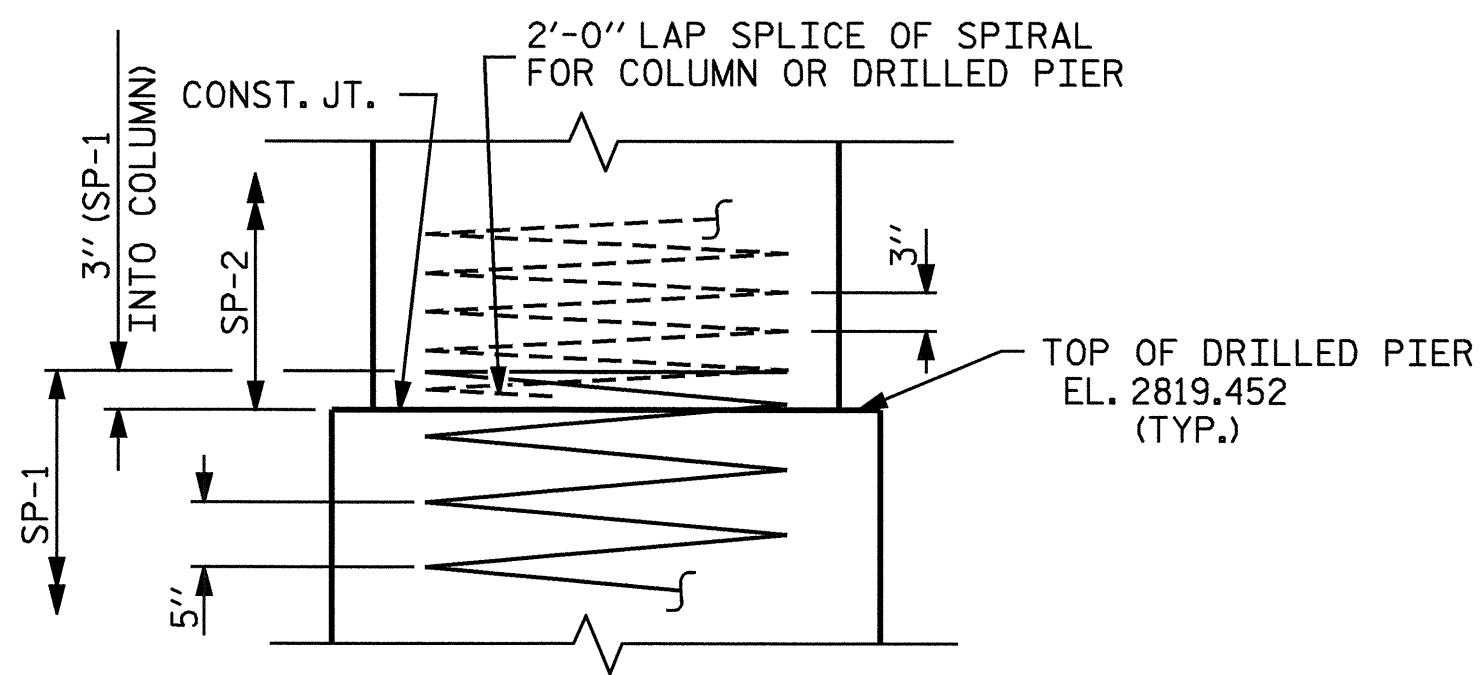


END OF CAP VIEW



SECTION A-A



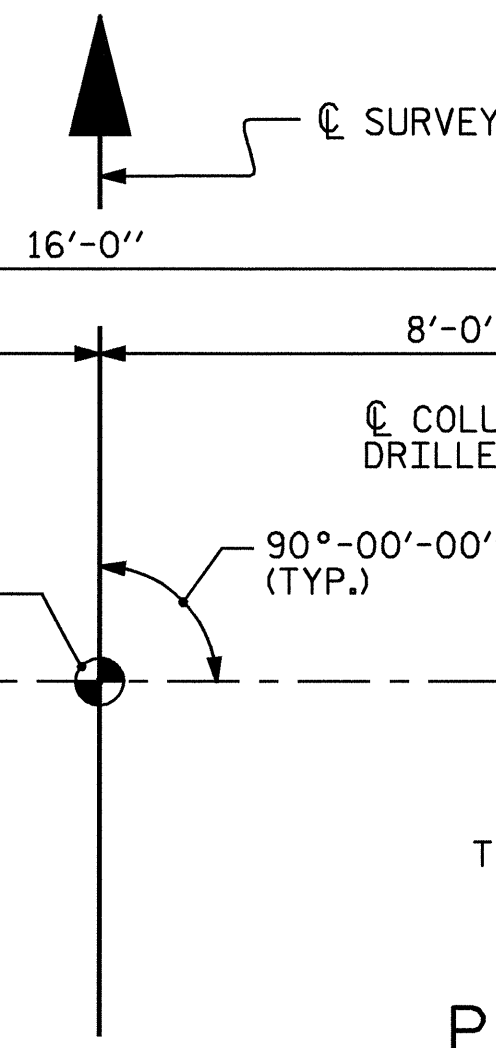
CONSTRUCTION JOINT DETAIL

11- #9 M1 @ 8 3/8" CTS.  
ON 1'-2 1/16" RAD.

BENT #3  
CONTROL LINE

PARTIAL PLAN OF DRILLED PIER

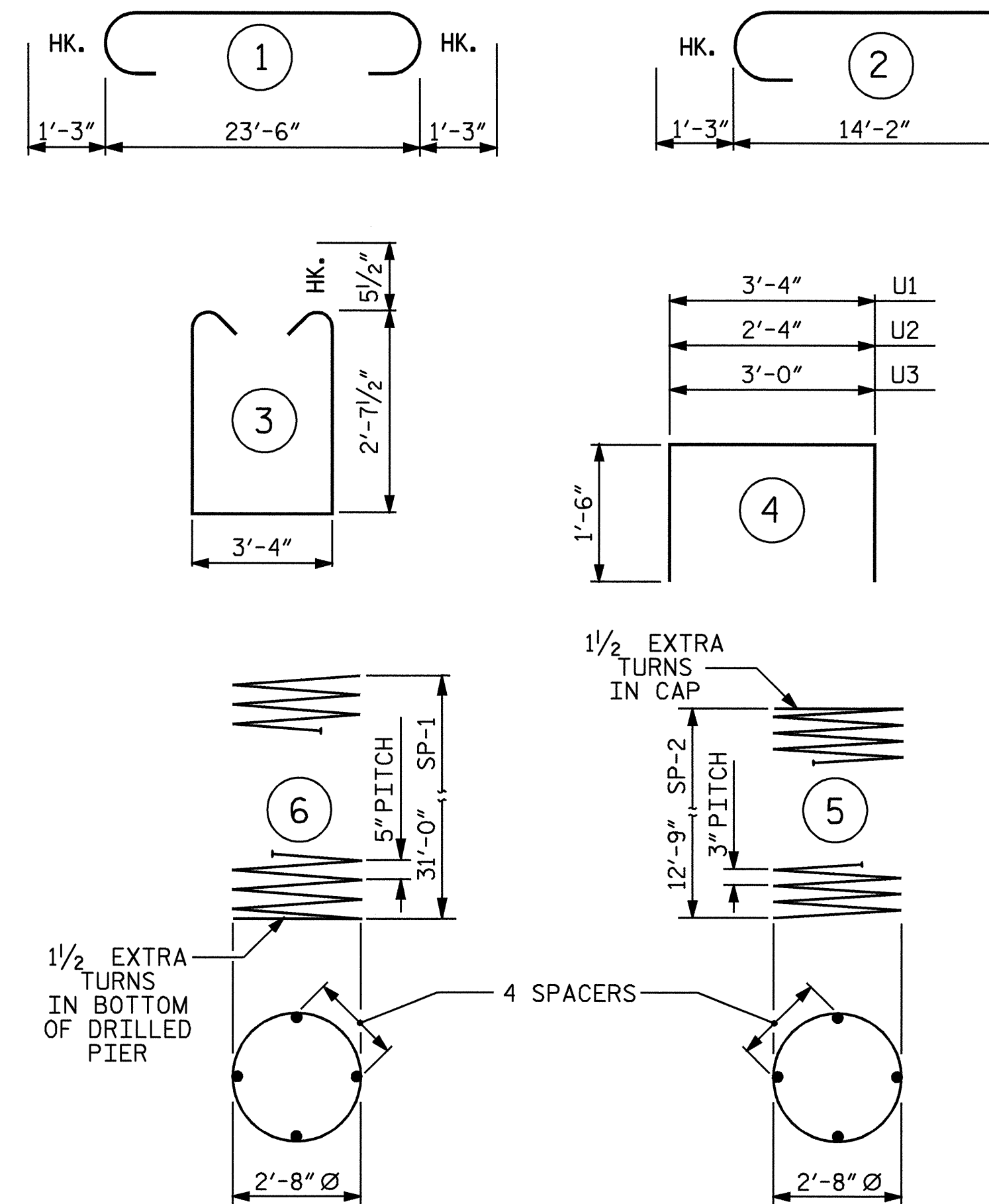
(REINFORCING STEEL AND DIMENSIONS  
TYPICAL FOR ALL DRILLED PIERS.)



PARTIAL PLAN OF COLUMN

(REINFORCING STEEL AND DIMENSIONS  
TYPICAL FOR ALL COLUMNS.)

BAR TYPES



ALL BAR DIMENSIONS ARE OUT TO OUT.

BILL OF MATERIAL

BENT #3

BAR	NO.	SIZE	TYPE	LENGTH	WEIGHT
B1	6	#9	STR	23'-8"	483
B2	6	#9	1	26'-0"	530
B3	4	#5	STR	23'-8"	99
M1	22	#9	STR	38'-9"	2899
S1	32	#5	3	9'-6"	317
U1	24	#4	4	6'-4"	102
U2	8	#4	4	5'-4"	29
U3	6	#4	4	6'-0"	24
V1	22	#9	2	15'-5"	1153
SP-1	2	▲▲	6	625'-1"	1304
SP-2	2	▲	5	433'-2"	579

REINFORCING STEEL = 5636 LBS  
SPIRAL REINFORCING STEEL = 1883 LBS

▲ THE SP-2 SPIRAL REINFORCING STEEL SHALL BE W20 OR D-20 COLD DRAWN WIRE OR #4 PLAIN OR DEFORMED BAR.

▲▲ THE SP-1 SPIRAL REINFORCING STEEL SHALL BE W31 OR D-31 COLD DRAWN WIRE OR #5 PLAIN OR DEFORMED BAR.

CLASS "A" CONCRETE BREAKDOWN

POUR #2 (COLUMNS)	6.5	CY
POUR #3 (CAP)	10.0	CY
TOTAL	16.5	CY

DRILLED PIER QUANTITIES

DRILLED PIER CONCRETE  
POUR #1 (DRILLED PIERS) 22.4 CY

3'-6" Ø DRILLED PIERS IN SOIL 37.00 LIN. FT.

3'-6" Ø DRILLED PIERS NOT IN SOIL 26.00 LIN. FT.

3'-6" Ø PERMANENT STEEL CASING 11.42 LIN. FT.

CROSSHOLE SONIC LOGGING 1 EA.

CSL TUBES 272.00 LIN. FT.

PROJECT NO. B-2905

ASHE COUNTY

STATION: 19+05.00 -L-

SHEET 2 OF 2

STATE OF NORTH CAROLINA  
DEPARTMENT OF TRANSPORTATION  
RALEIGH

SUBSTRUCTURE

BENT #3



REVISIONS

NO.	BY:	DATE:	NO.	BY:	DATE:
1			3		
2			4		

SHEET NO.  
S-26  
TOTAL SHEETS  
35