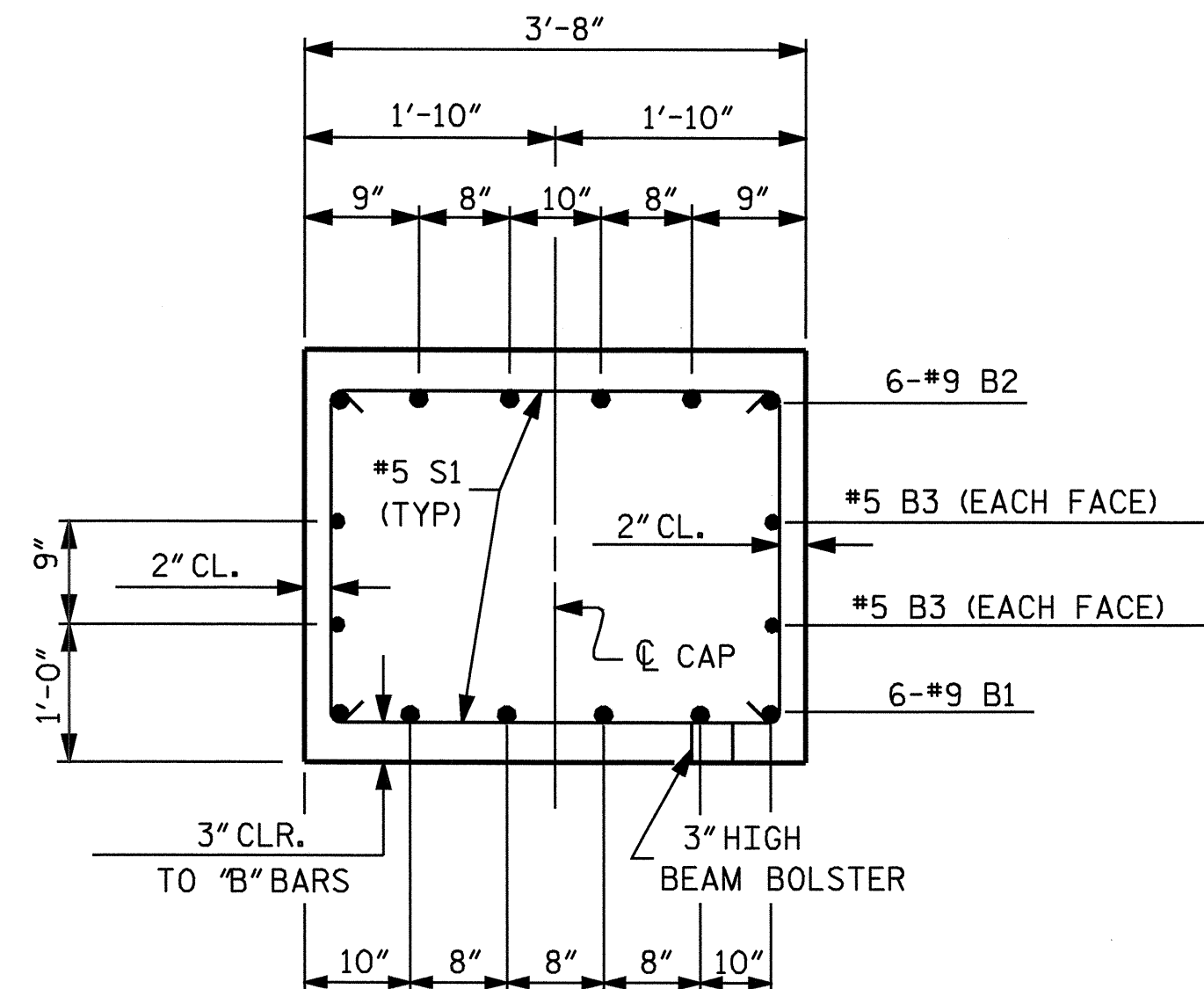
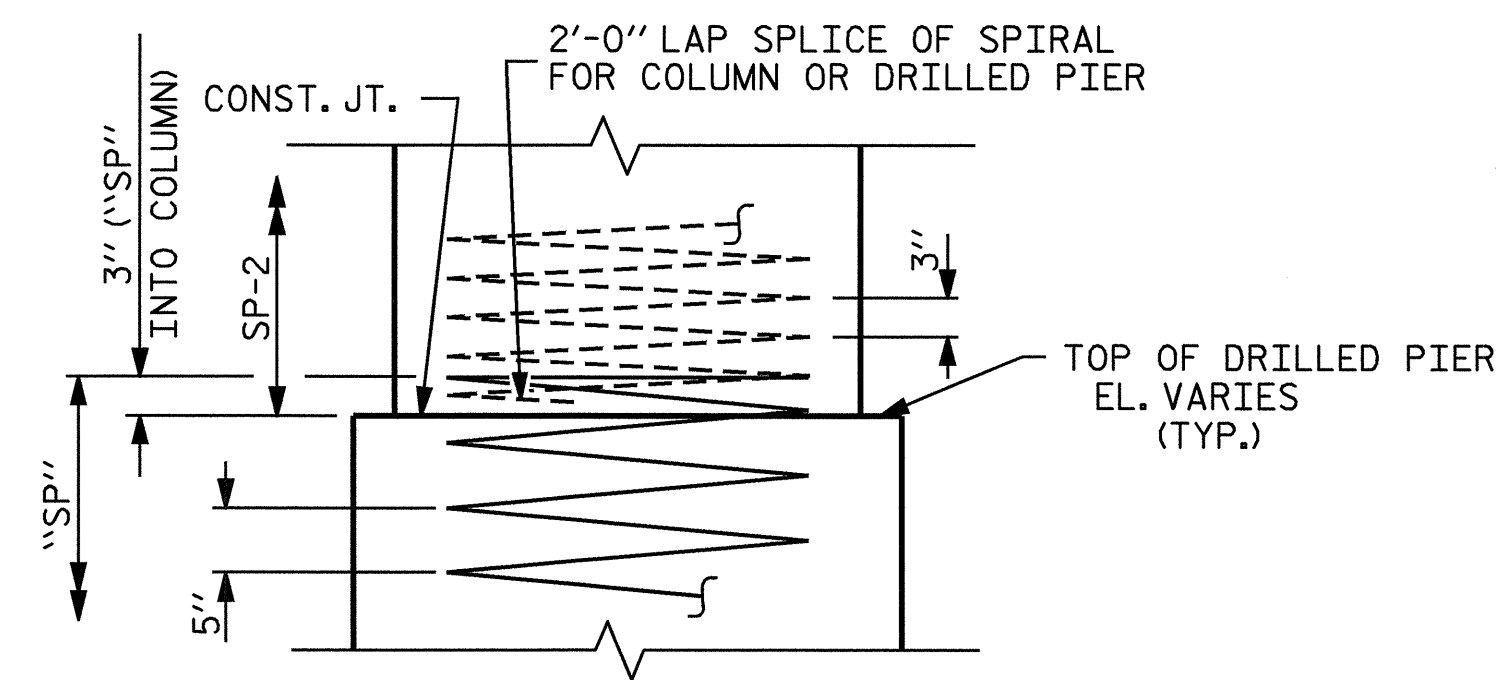


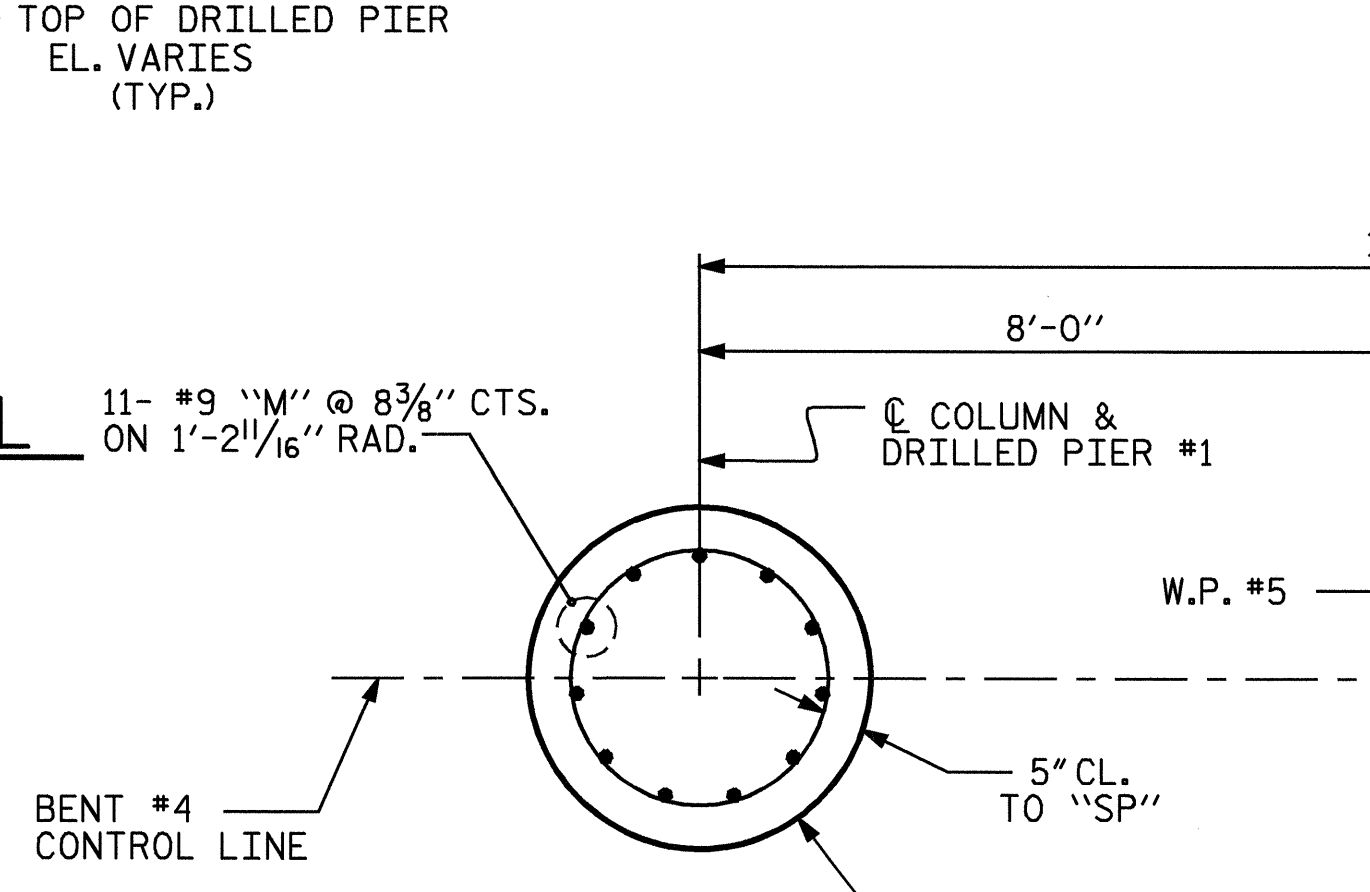
END OF CAP VIEW



SECTION A-A

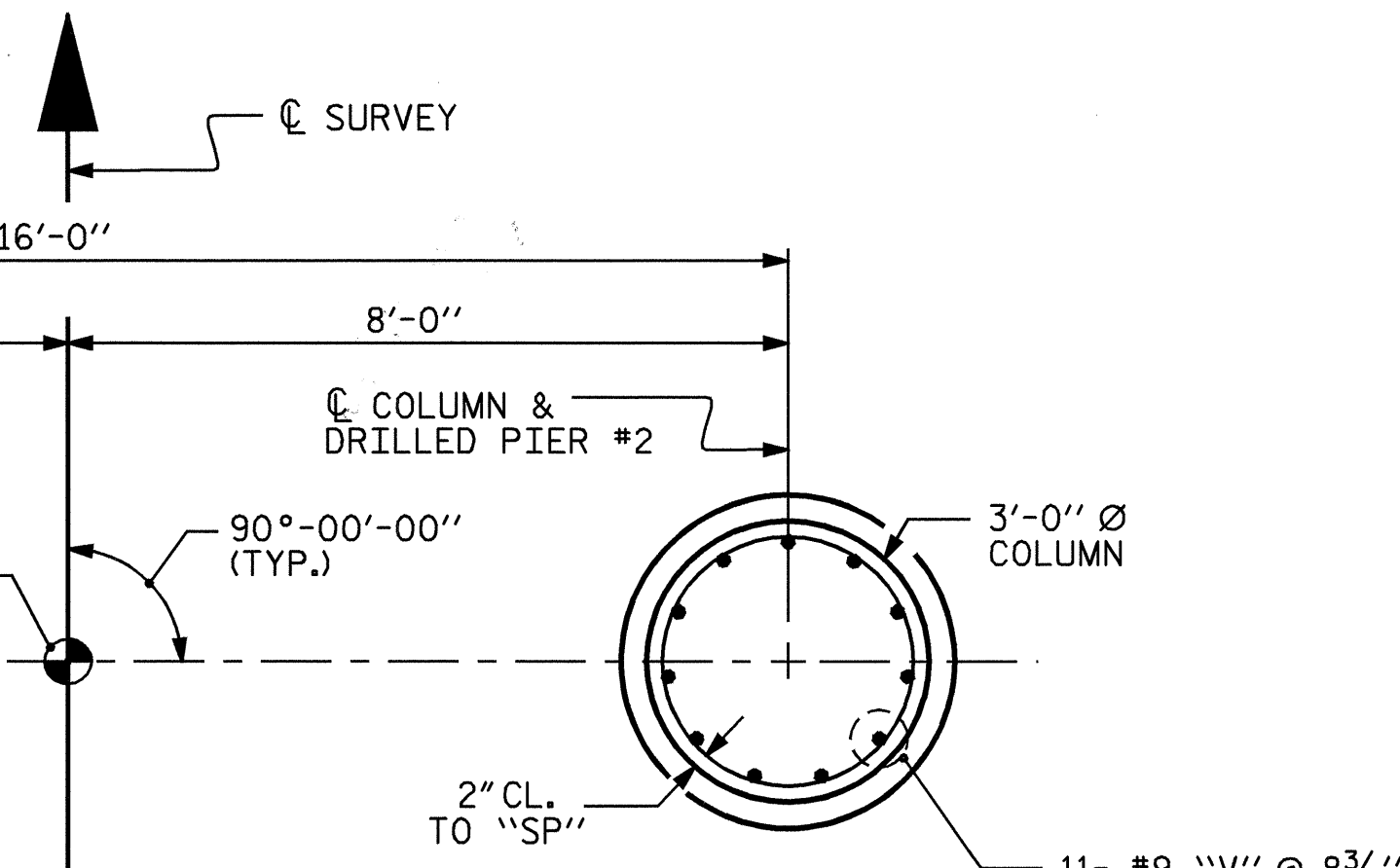


CONSTRUCTION JOINT DETAIL



PARTIAL PLAN OF DRILLED PIER

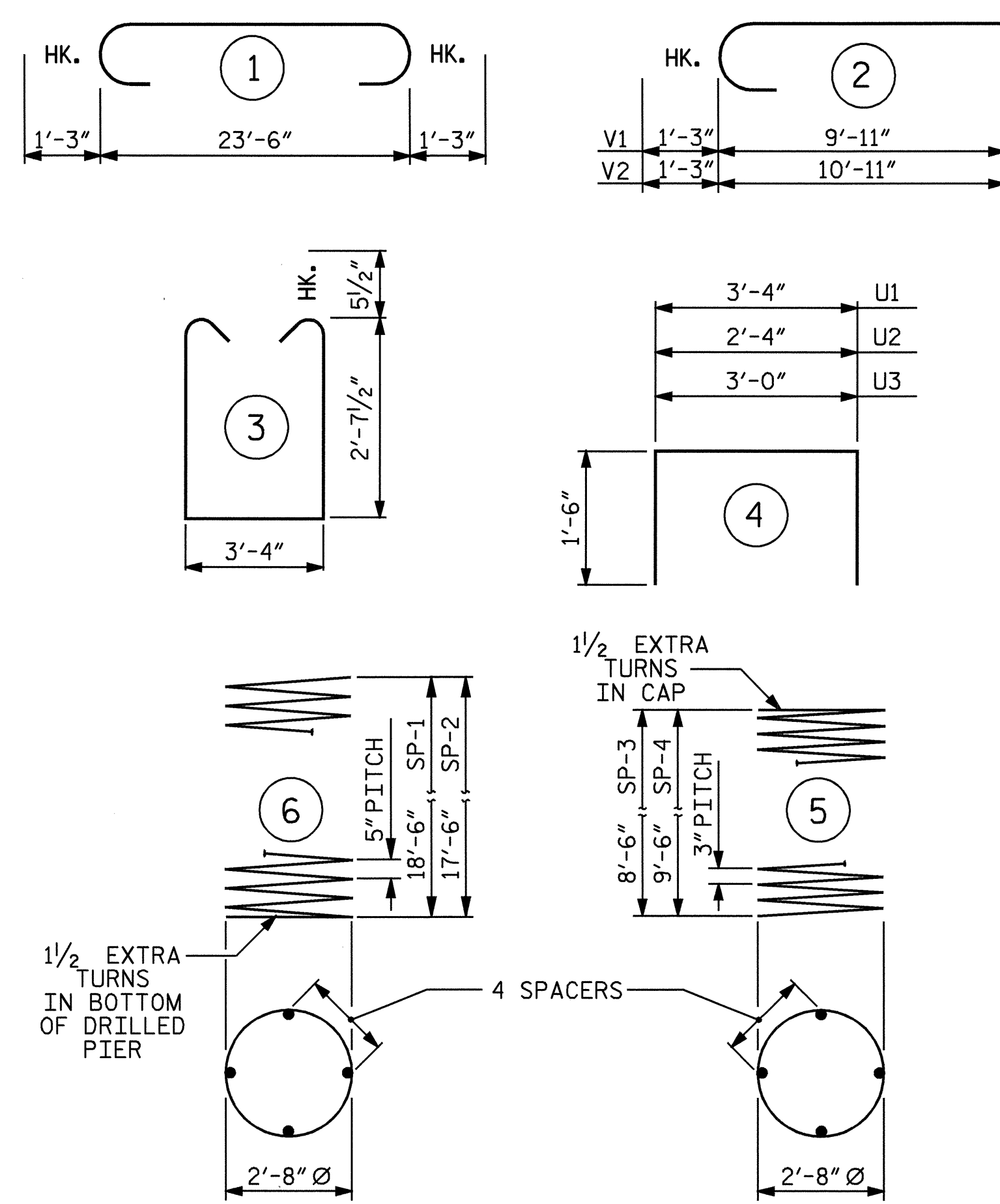
(REINFORCING STEEL AND DIMENSIONS TYPICAL FOR ALL DRILLED PIERS.)



PARTIAL PLAN OF COLUMN

(REINFORCING STEEL AND DIMENSIONS TYPICAL FOR ALL COLUMNS.)

BAR TYPES



ALL BAR DIMENSIONS ARE OUT TO OUT.

BILL OF MATERIAL

BENT #4					
BAR	NO.	SIZE	TYPE	LENGTH	WEIGHT
B1	6	#9	STR	23'-8"	483
B2	6	#9	1	26'-0"	530
B3	4	#5	STR	23'-8"	99
M1	11	#9	STR	26'-3"	982
M2	11	#9	STR	25'-3"	944
S1	32	#5	3	9'-6"	317
U1	24	#4	4	6'-4"	102
U2	8	#4	4	5'-4"	29
U3	6	#4	4	6'-0"	24
V1	11	#9	2	11'-2"	418
V2	11	#9	2	12'-2"	455
SP-1	1	▲▲	6	378'-4"	395
SP-2	1	▲▲	6	357'-10"	373
SP-3	1	▲▲	5	292'-11"	196
SP-4	1	▲	5	325'-11"	218
REINFORCING STEEL				=	4383 LBS
SPIRAL REINFORCING STEEL				=	1182 LBS
▲ THE SP-2 SPIRAL REINFORCING STEEL SHALL BE W20 OR D-20 COLD DRAWN WIRE OR #4 PLAIN OR DEFORMED BAR.					
▲▲ THE SP-1 SPIRAL REINFORCING STEEL SHALL BE W31 OR D-31 COLD DRAWN WIRE OR #5 PLAIN OR DEFORMED BAR.					
CLASS "A" CONCRETE BREAKDOWN					
POUR #2 (COLUMNS)				4.6	CY
POUR #3 (CAP)				10.0	CY
TOTAL				14.6	CY
DRILLED PIER QUANTITIES					
DRILLED PIER CONCRETE					
POUR #1 (DRILLED PIERS)				13.2	CY
3'-6" Ø DRILLED PIERS IN SOIL					
				13.00	LIN. FT.
3'-6" Ø DRILLED PIERS NOT IN SOIL					
				24.00	LIN. FT.
CROSSHOLE SONIC LOGGING					
				1	EA.
CSL TUBES				168.00	LIN. FT.

PROJECT NO. B-2905
ASHE COUNTY
 STATION: 19+05.00 -L-

SHEET 2 OF 2
 STATE OF NORTH CAROLINA
 DEPARTMENT OF TRANSPORTATION
 RALEIGH
 SUBSTRUCTURE
 BENT #4



REVISIONS				SHEET NO.
NO.	BY:	DATE:	NO.	DATE:
1			3	
2			4	

S-28
TOTAL SHEETS 35