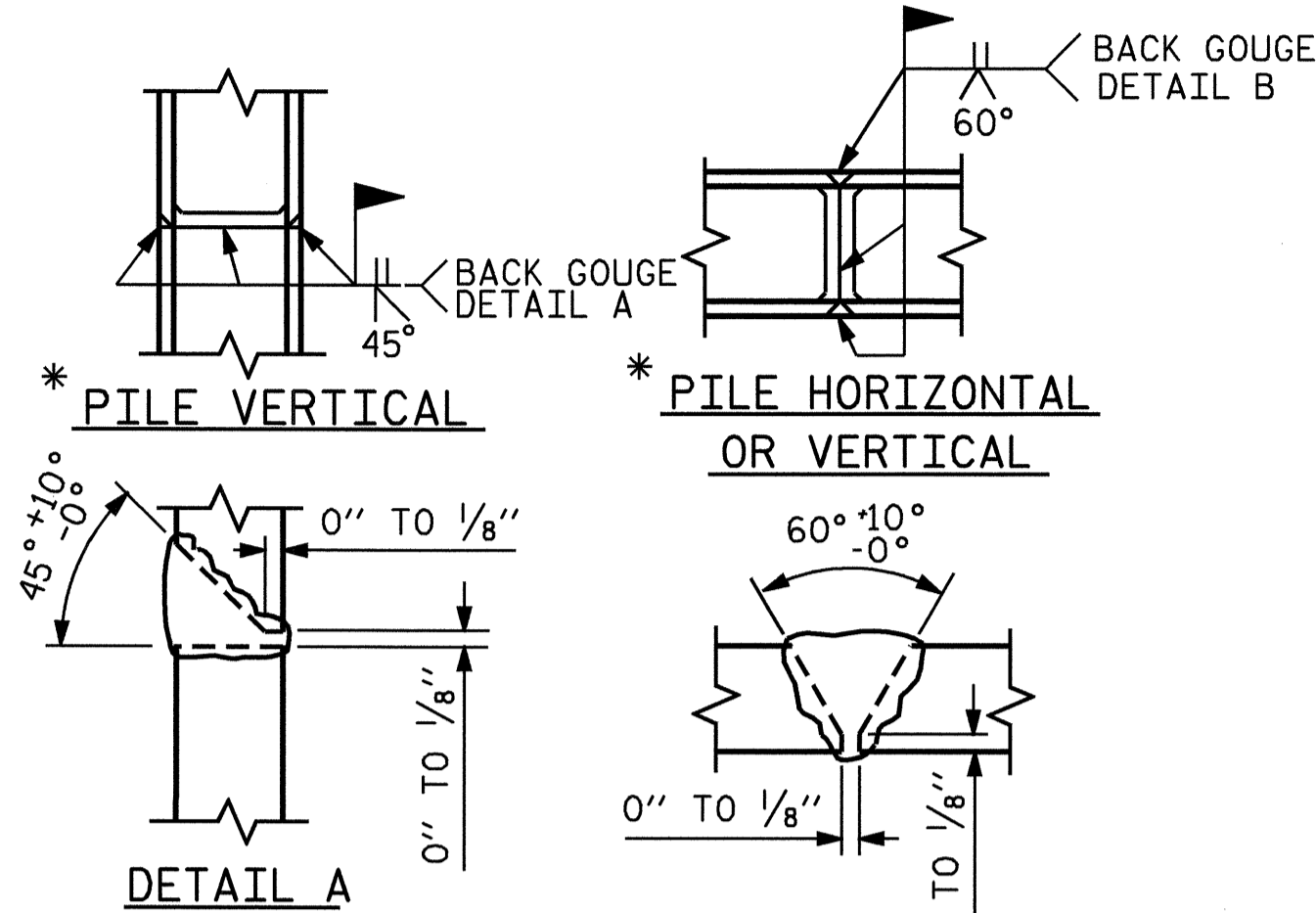


BAGGED STONE AND PIPE SHALL BE PLACED IMMEDIATELY AFTER COMPLETION OF END BENT EXCAVATION. PIPE MAY BE EITHER CONCRETE, CORRUGATED STEEL, CORRUGATED ALUMINUM ALLOY, OR CORRUGATED PLASTIC. PERFORATED PIPE WILL NOT BE ALLOWED.

BAGGED STONE SHALL REMAIN IN PLACE UNTIL THE ENGINEER DIRECTS THAT IT BE REMOVED. THE CONTRACTOR SHALL REMOVE AND DISPOSE OF SILT ACCUMULATIONS AT BAGGED STONE WHEN SO DIRECTED BY THE ENGINEER. BAGS SHALL BE REMOVED AND REPLACED WHENEVER THE ENGINEER DETERMINES THAT THEY HAVE DETERIORATED AND LOST THEIR EFFECTIVENESS.

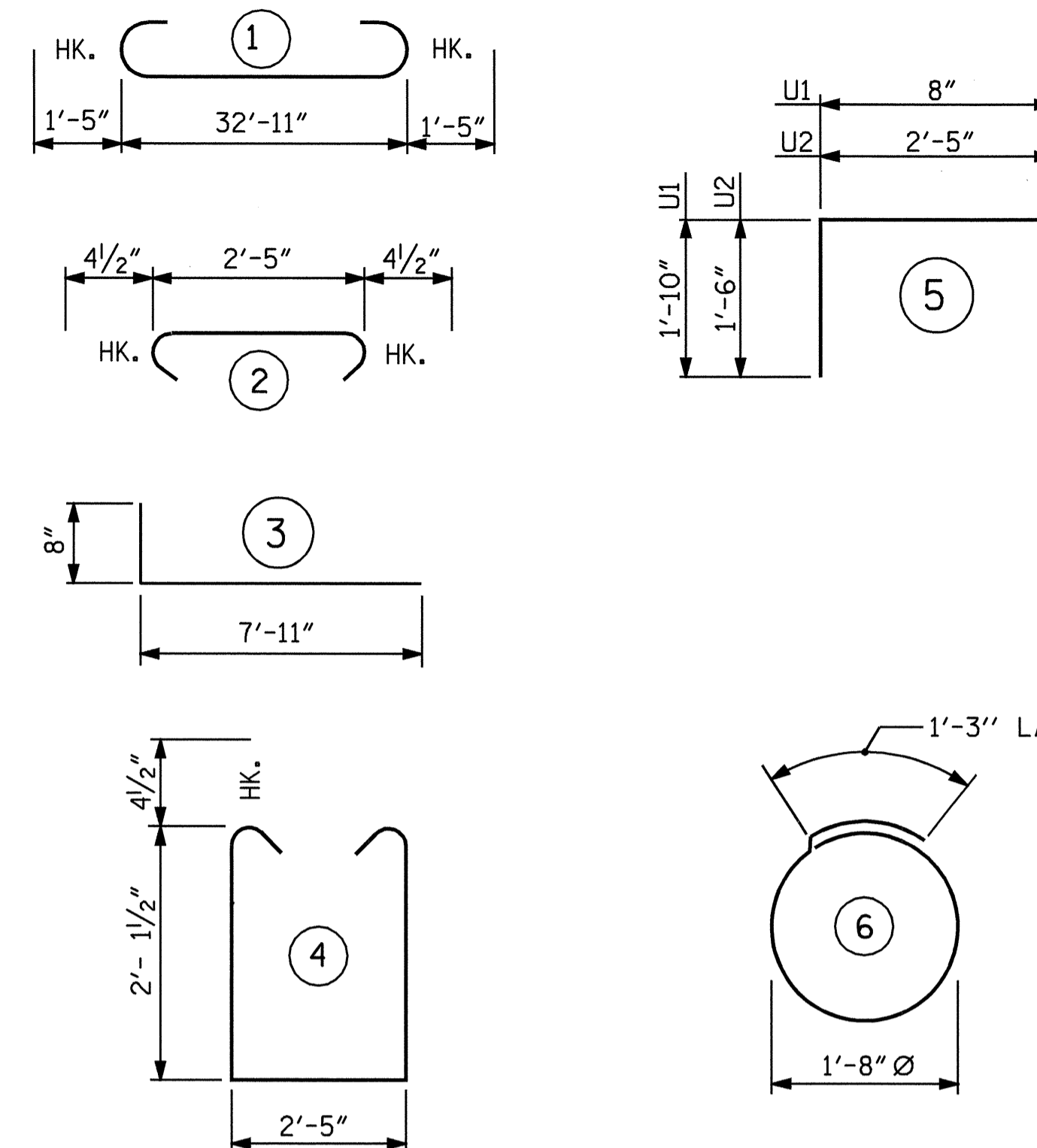
NO SEPARATE PAYMENT WILL BE MADE FOR THIS WORK AND THE ENTIRE COST OF THIS WORK SHALL BE INCLUDED IN THE UNIT CONTRACT PRICE BID FOR THE SEVERAL PAY ITEMS.

TEMPORARY DRAINAGE AT END BENT



* POSITION OF PILE DURING WELDING. **PILE SPLICE DETAILS**

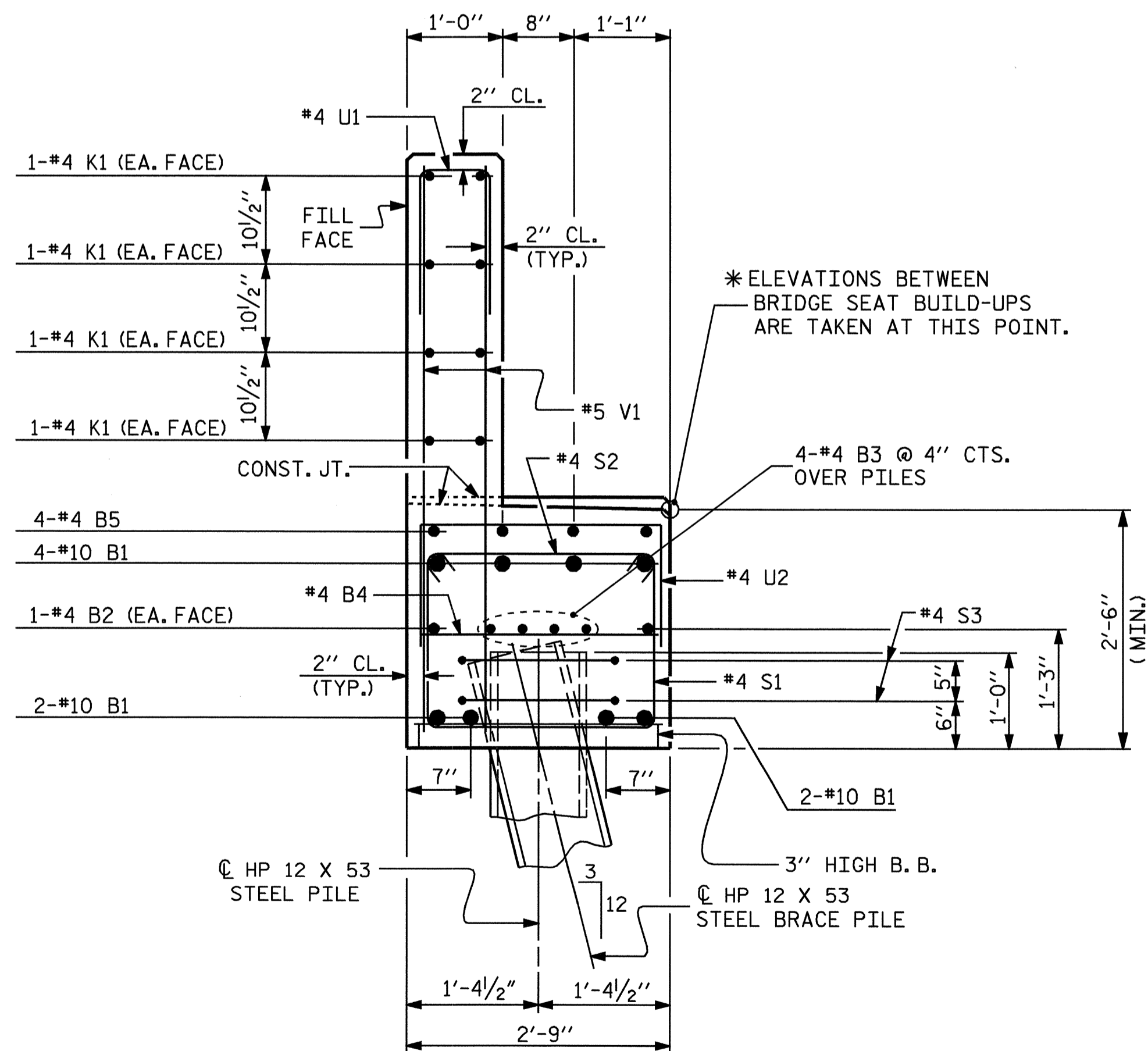
BAR TYPES



ALL BAR DIMENSIONS ARE OUT TO OUT.

BILL OF MATERIAL

| END BENT #2 | | | | | |
|------------------------------|-----|------|------|----------|----------|
| BAR | NO. | SIZE | TYPE | LENGTH | WEIGHT |
| B1 | 8 | #10 | 1 | 35'-9" | 1231 |
| B2 | 4 | #4 | STR | 17'-8" | 47 |
| B3 | 8 | #4 | STR | 17'-8" | 94 |
| B4 | 9 | #4 | STR | 2'-5" | 15 |
| B5 | 8 | #4 | STR | 2'-2" | 12 |
| H1 | 36 | #5 | 3 | 8'-7" | 322 |
| H2 | 8 | #5 | STR | 2'-7" | 22 |
| K1 | 16 | #4 | STR | 17'-9" | 190 |
| S1 | 32 | #4 | 4 | 7'-5" | 159 |
| S2 | 32 | #4 | 2 | 3'-2" | 68 |
| S3 | 14 | #4 | 6 | 6'-6" | 61 |
| U1 | 28 | #4 | 5 | 4'-4" | 81 |
| U2 | 6 | #4 | 5 | 5'-5" | 22 |
| V1 | 56 | #5 | STR | 5'-2" | 302 |
| V2 | 52 | #5 | STR | 6'-4" | 343 |
| REINFORCING STEEL | | | | = | 2969 LBS |
| CLASS "A" CONCRETE BREAKDOWN | | | | | |
| POUR #1 | | | | | |
| CAP & LOWER WINGS | | | | C.Y. | 10.2 |
| POUR #2 | | | | | |
| BACKWALL & UPPER WINGS | | | | C.Y. | 6.3 |
| TOTAL CLASS "A" CONCRETE | | | | C.Y. | 16.5 |
| HP 12 X 53 STEEL PILES | | | | | |
| NO. 7 | | | | LIN. FT. | 105 |
| STEEL PILE POINTS | | | | | |
| NO. | | | | | 7 EA. |



SECTION A-A

PROJECT NO. B-2905
ASHE COUNTY
 STATION: 19+05.00 -L-

SHEET 3 OF 3



STATE OF NORTH CAROLINA
 DEPARTMENT OF TRANSPORTATION
 RALEIGH

**SUBSTRUCTURE
 END BENT #2**

| REVISIONS | | | | | SHEET NO. |
|-----------|-----|-------|-----|-----|-----------|
| NO. | BY: | DATE: | NO. | BY: | DATE: |
| 1 | | | 3 | | |
| 2 | | | 4 | | |

TOTAL SHEETS 35

DRAWN BY: P. ADKINS/L.L.M. DATE: 01-05
 CHECKED BY: V.X. NGUYEN DATE: 01-05