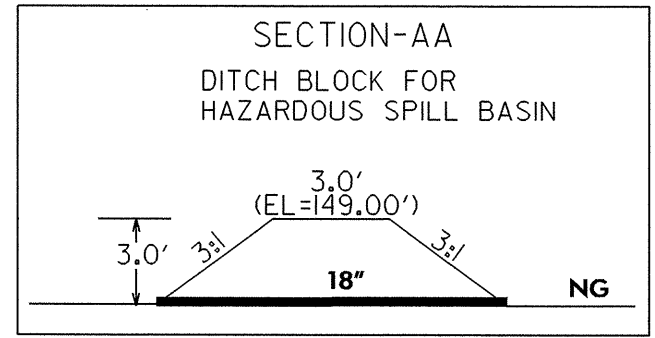
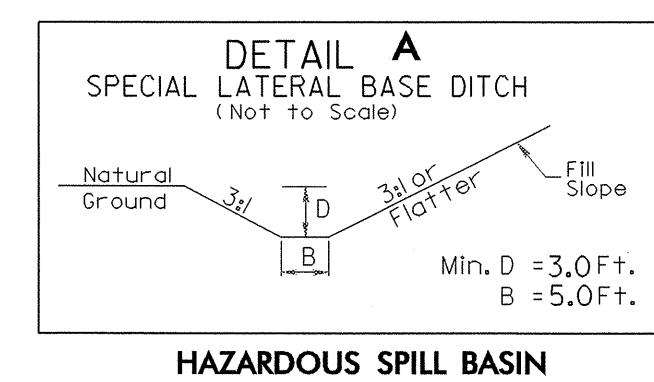
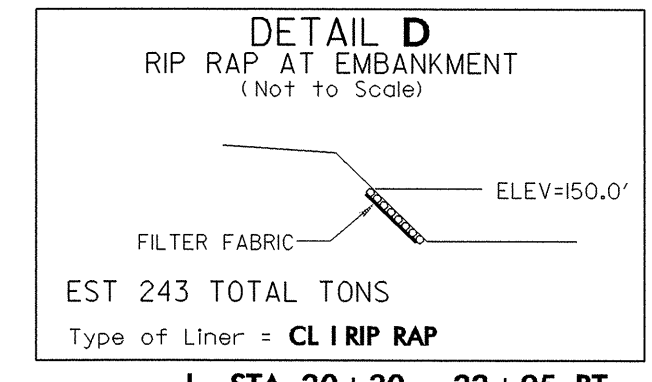
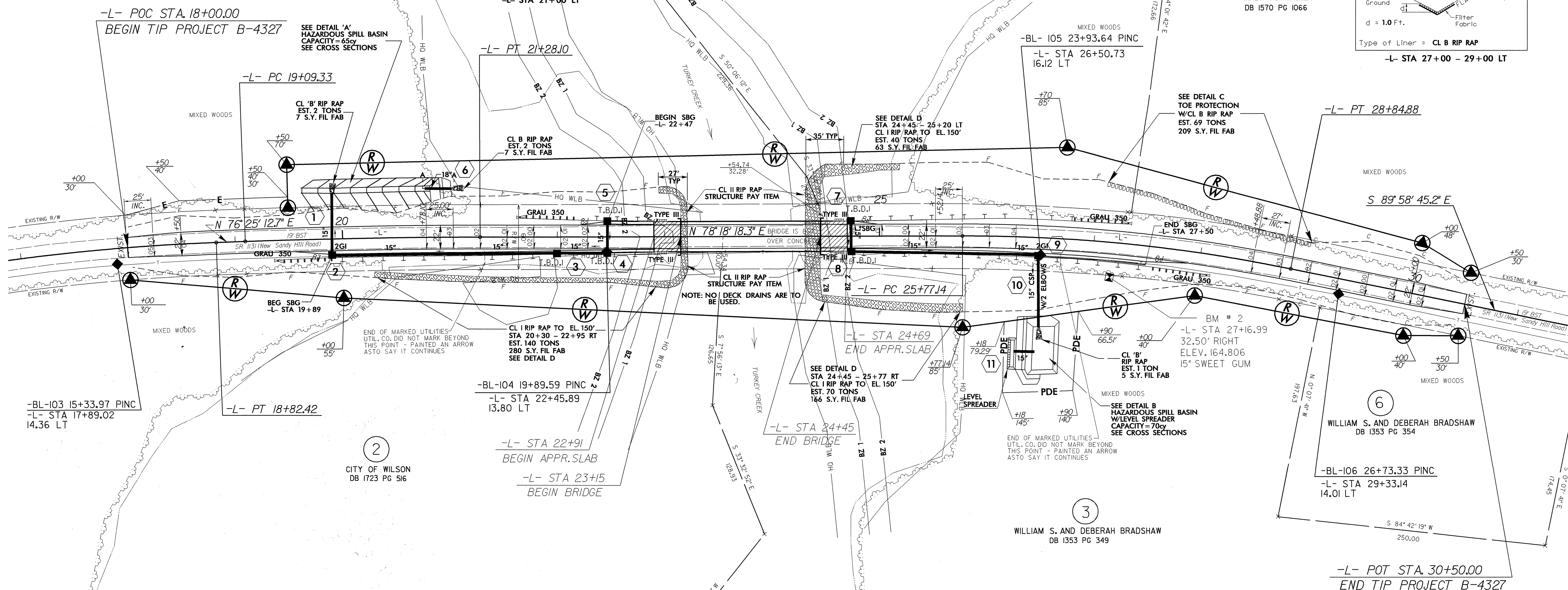
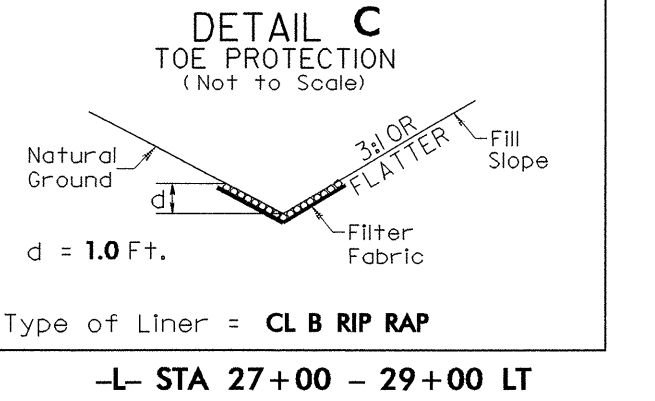


8/17/99

-L-		
PI Sta 17+36.85 Δ = 8° 29' 00.8" (RT) D = 2' 54' 30.3" L = 291.69' T = 146.11' R = 1,970.00' e = EXIST	PI Sta 20+18.72 Δ = 1° 53' 05.6" (RT) D = 0' 51' 41.7" L = 218.77' T = 109.39' R = 6,650.00' e = SEE PLANS	PI Sta 27+31.55 Δ = 11° 42' 56.5" (RT) D = 3' 48' 25.3" L = 307.74' T = 154.41' R = 1,505.00' e = SEE PLANS



PROJECT REFERENCE NO. B-4327	SHEET NO. 4
RW SHEET NO.	
ROADWAY DESIGN ENGINEER GREGORY E. BREW NORTH CAROLINA PROFESSIONAL SEAL 18903 1-24-05	HYDRAULICS ENGINEER LINDA N. FRAZIER NORTH CAROLINA PROFESSIONAL SEAL 22100 1-24-05
FOR PROFILE SEE SHEET 5	



1 CITY OF WILSON DB 1687 PG 1066

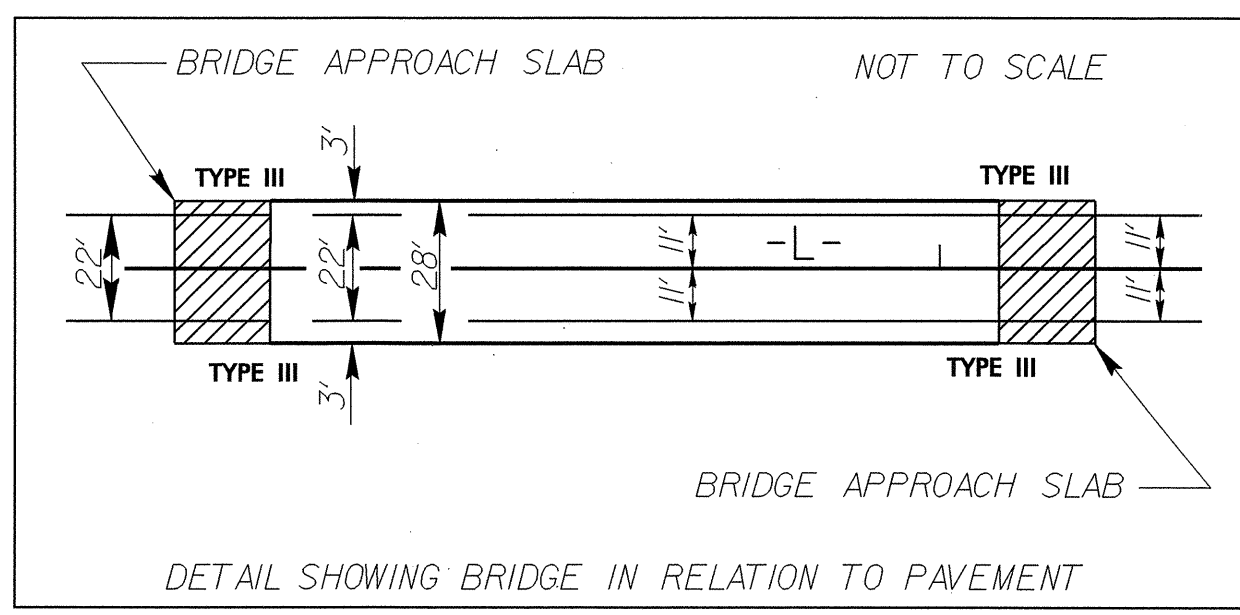
4 CITY OF WILSON DB 1628 PG 232

5 LINDA N. FRAZIER DB 1570 PG 1066

2 CITY OF WILSON DB 1723 PG 516

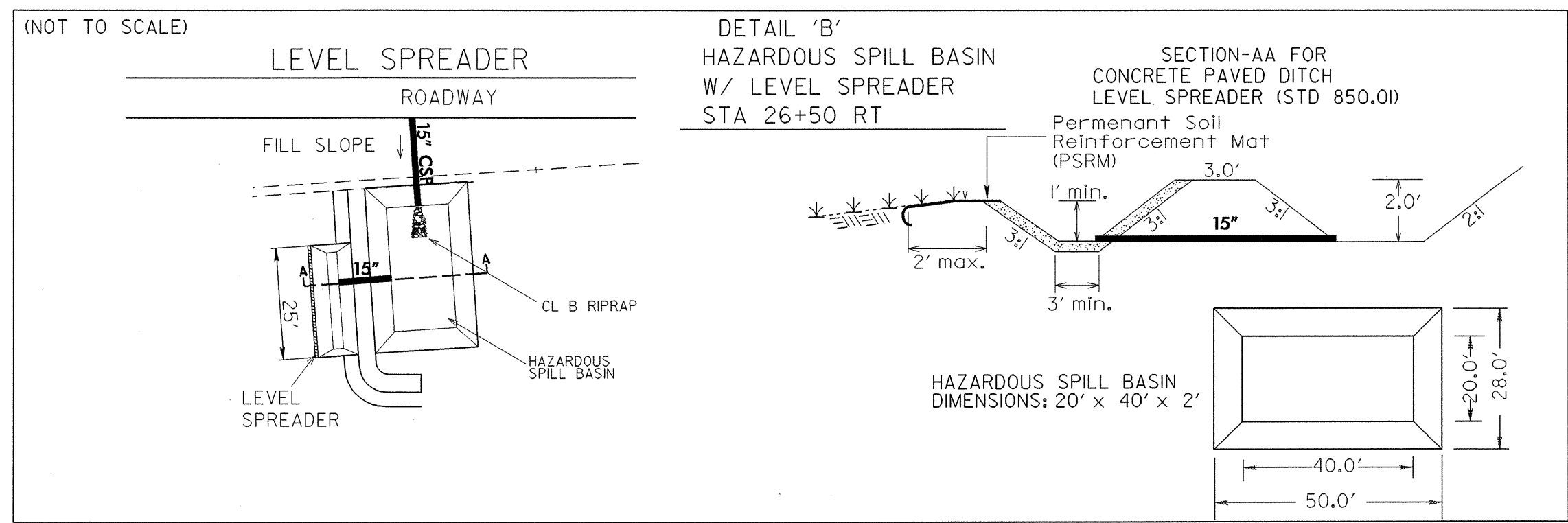
3 WILLIAM S. AND DEBERAH BRADSHAW DB 1353 PG 349

6 WILLIAM S. AND DEBERAH BRADSHAW DB 1353 PG 354



FOR STRUCTURE PLANS SEE SHEET S-1 THRU S-24

NOTE: THE EXISTING PAVEMENT IS TO BE REMOVED AND THE ROADBED SCARIFIED TO A MINIMUM DEPTH OF 2'-0" BELOW ORIGINAL SURFACE IN THE AREA WHERE PILES ARE TO BE DRIVEN THROUGH THE PROPOSED EMBANKMENT, AS DIRECTED BY THE ENGINEER.



REVISIONS

10-11-2005 10:30 B4327_r.dwg_psf04.dgn
1-1-2005 10:30 B4327_r.dwg_psf04.dgn
1-1-2005 10:30 B4327_r.dwg_psf04.dgn