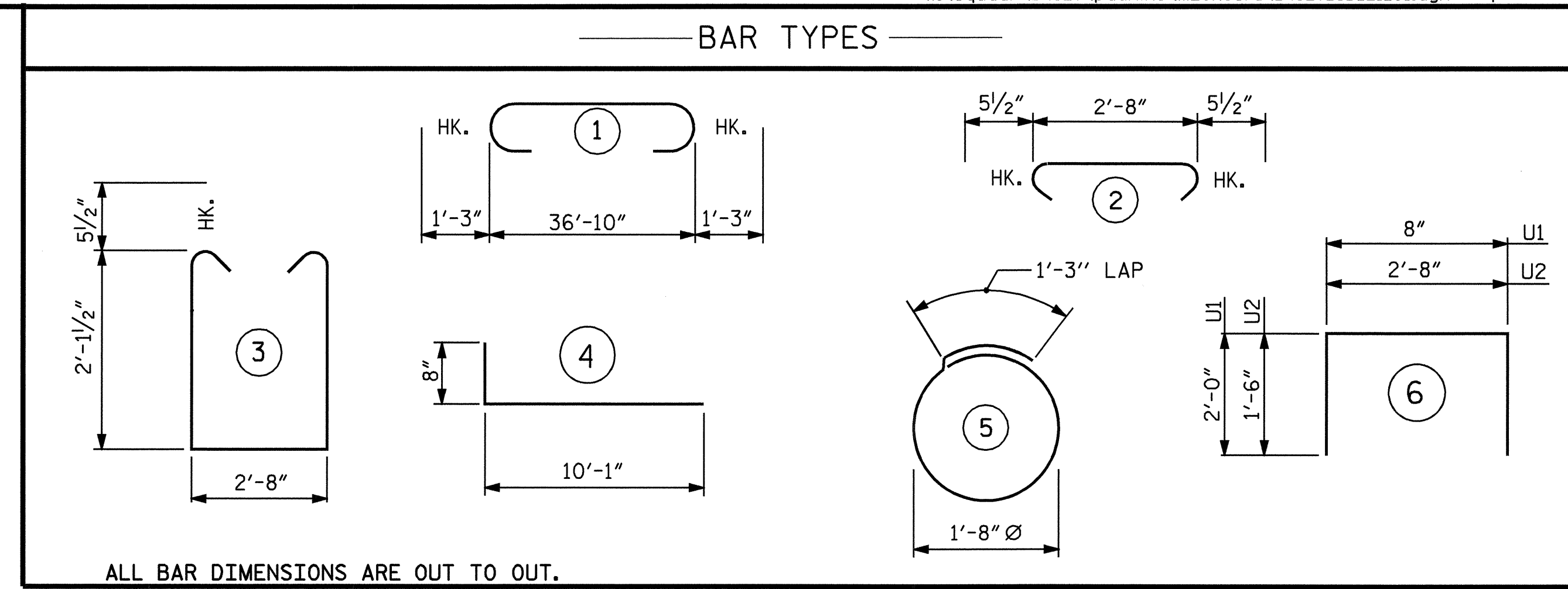


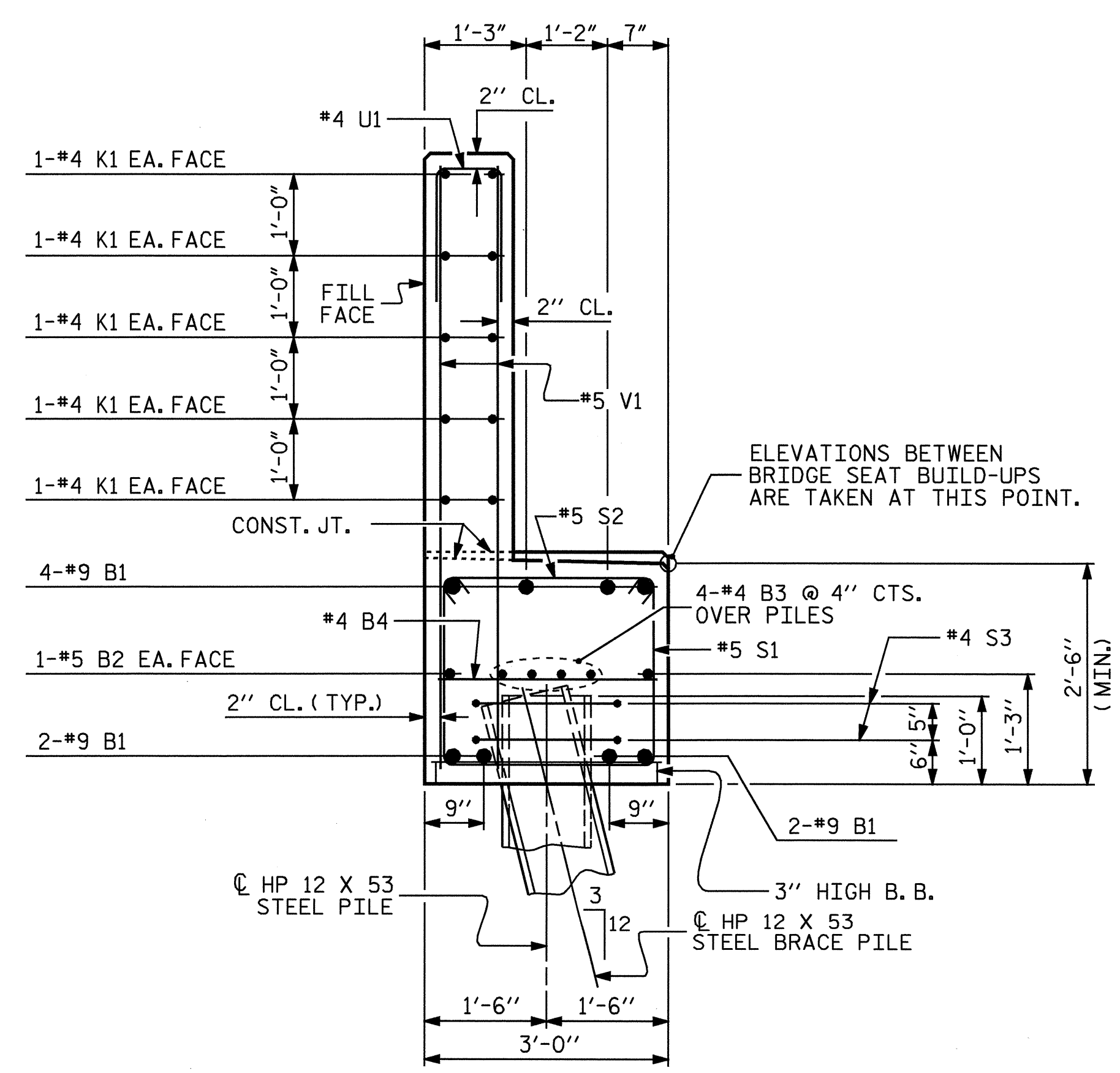
* POSITION OF PILE DURING WELDING.

PILE SPLICE DETAILS

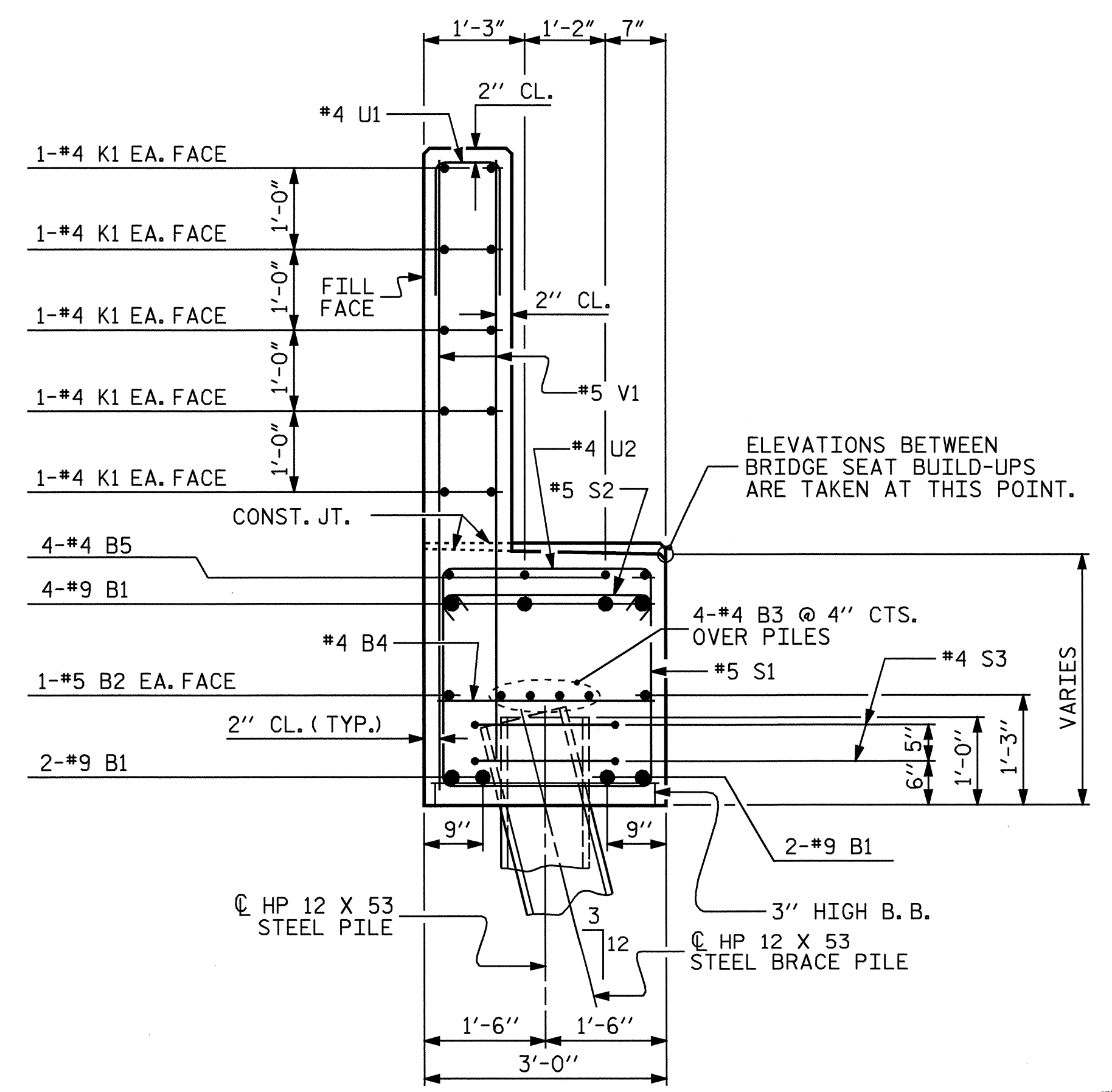


ALL BAR DIMENSIONS ARE OUT TO OUT.

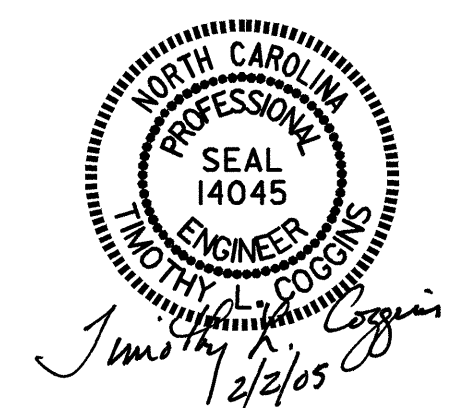
BILL OF MATERIAL					
END BENT #1					
BAR	NO.	SIZE	TYPE	LENGTH	WEIGHT
B1	8	9	1	39'-4"	1070
B2	2	5	STR	36'-11"	77
B3	8	4	STR	19'-8"	105
B4	10	4	STR	2'-8"	18
B5	4	4	STR	10'-4"	28
H1	40	6	4	10'-9"	646
K1	20	4	STR	19'-8"	263
K2	8	4	STR	2'-7"	14
S1	34	5	3	7'-10"	278
S2	34	5	2	3'-7"	127
S3	18	4	5	6'-6"	78
U1	32	4	6	4'-8"	100
U2	7	4	6	5'-8"	26
V1	64	5	STR	6'-7"	439
V2	20	5	STR	7'-9"	162
V3	36	5	STR	7'-10"	294
TOTAL REINFORCING STEEL					3725 LBS.
CLASS "A" CONCRETE BREAKDOWN					
POUR #1 CAP & LOWER WING					12.4 CU. YD.
POUR #2 BACKWALL & UPPER WING					10.4 CU. YD.
TOTAL CLASS "A" CONCRETE					22.8 CU. YD.
HP 12 X 53 STEEL PILES					315 LIN. FT.
NO. 9					315 LIN. FT.



SECTION A-A



SECTION B-B



PROJECT NO. B-4327
WILSON COUNTY
 STATION: 23+80.00 -L-

SHEET 3 OF 3

STATE OF NORTH CAROLINA
 DEPARTMENT OF TRANSPORTATION
 RALEIGH

SUBSTRUCTURE
 END BENT #1

DRAWN BY : PEGGY ADKINS DATE : 11-04
 CHECKED BY : G. KOUCHEKI DATE : 11-04

REVISIONS						SHEET NO.	
NO.	BY:	DATE:	NO.	BY:	DATE:	S-16	
1			3			TOTAL SHEETS	24
2			4				