

UTILITIES BY OTHERS

NOTE:
 ALL PROPOSED UTILITY WORK SHOWN ON THIS SHEET WILL BE DONE BY OTHERS

SKYLINE TELEPHONE MEMBERSHIP CORPORATION:

THE THREE LOCATIONS CIRCLED BELOW ARE AREAS WHERE THE CONTRACTOR SHOULD PROCEED WITH EXTREME CAUTION SO NOT TO DAMAGE THE EXISTING TELEPHONE FACILITIES

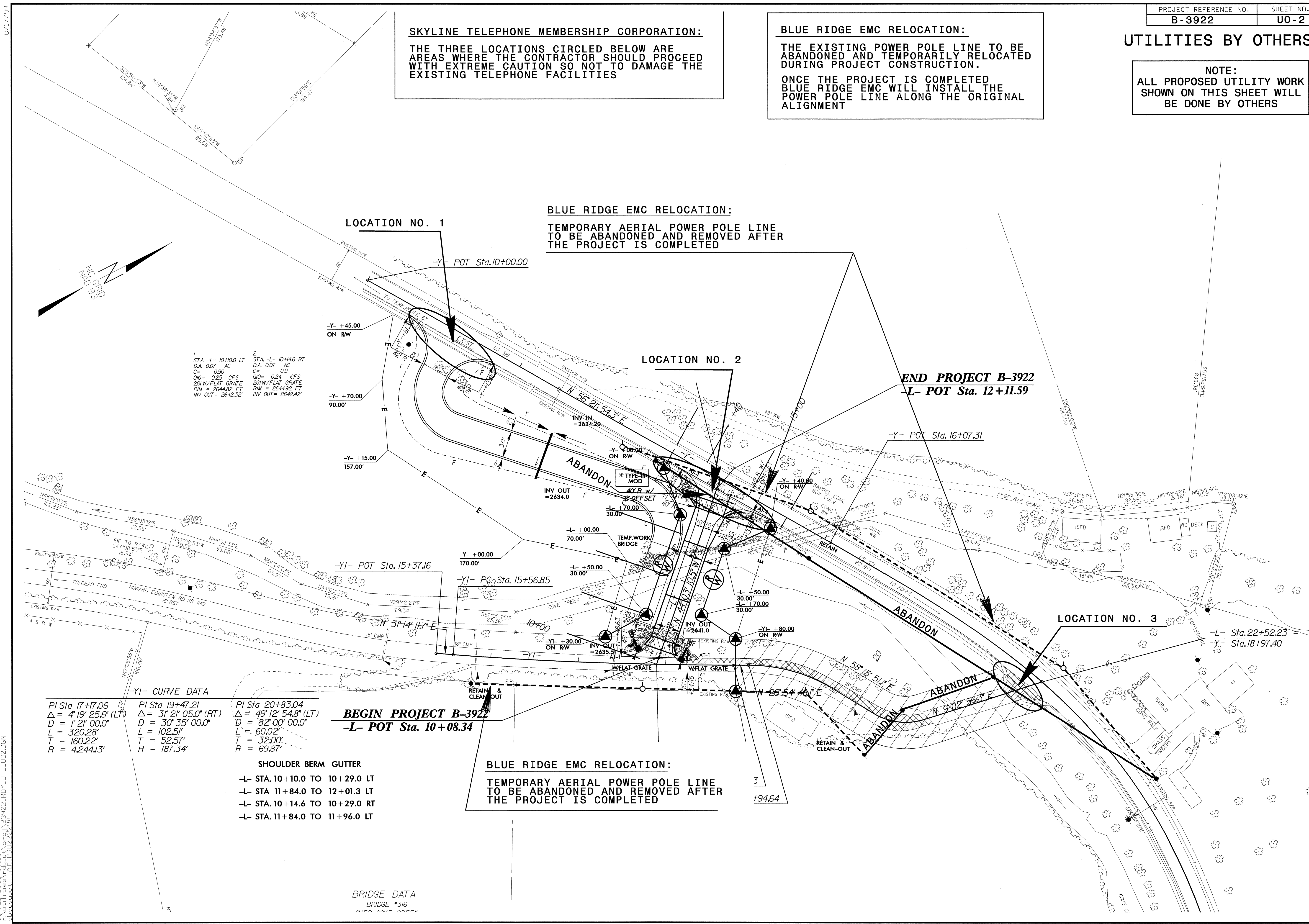
BLUE RIDGE EMC RELOCATION:

THE EXISTING POWER POLE LINE TO BE ABANDONED AND TEMPORARILY RELOCATED DURING PROJECT CONSTRUCTION.

ONCE THE PROJECT IS COMPLETED BLUE RIDGE EMC WILL INSTALL THE POWER POLE LINE ALONG THE ORIGINAL ALIGNMENT

BLUE RIDGE EMC RELOCATION:

TEMPORARY AERIAL POWER POLE LINE TO BE ABANDONED AND REMOVED AFTER THE PROJECT IS COMPLETED



| | |
|--------------------|--------------------|
| 1 | 2 |
| STA -L- 10+10.0 LT | STA -L- 10+14.6 RT |
| D.A. 0.07 AC | D.A. 0.07 AC |
| C= 0.90 | C= 0.9 |
| Q10= 0.25 CFS | Q10= 0.24 CFS |
| 261W/FLAT GRATE | 261W/FLAT GRATE |
| RIM = 2644.82 FT | RIM = 2644.92 FT |
| INV OUT= 2642.32 | INV OUT= 2642.42 |

-YI- CURVE DATA

| | | |
|----------------------------------|--------------------------------------|--------------------------------------|
| PI Sta 17+17.06 | PI Sta 19+47.21 | PI Sta 20+83.04 |
| $\Delta = 41^{\circ} 25.6' (LT)$ | $\Delta = 31^{\circ} 21' 05.0' (RT)$ | $\Delta = 49^{\circ} 12' 54.8' (LT)$ |
| D = 121' 00.0' | D = 30' 35' 00.0' | D = 82' 00' 00.0' |
| L = 320.28' | L = 102.51' | L = 60.02' |
| T = 160.22' | T = 52.57' | T = 32.00' |
| R = 4,244.13' | R = 187.34' | R = 69.87' |

SHOULDER BERM GUTTER

| |
|--------------------------------|
| -L- STA. 10+10.0 TO 10+29.0 LT |
| -L- STA. 11+84.0 TO 12+01.3 LT |
| -L- STA. 10+14.6 TO 10+29.0 RT |
| -L- STA. 11+84.0 TO 11+96.0 LT |

BEGIN PROJECT B-3922
-L- POT Sta. 10+08.34

BLUE RIDGE EMC RELOCATION:
 TEMPORARY AERIAL POWER POLE LINE TO BE ABANDONED AND REMOVED AFTER THE PROJECT IS COMPLETED

BRIDGE DATA
 BRIDGE #316
 OVER COVE CREEK

03-FEB-2005 07:39
 C:\UTL\115-04-PS1\B3922.RDYL_JUTL_U02.DGN
 8/17/99