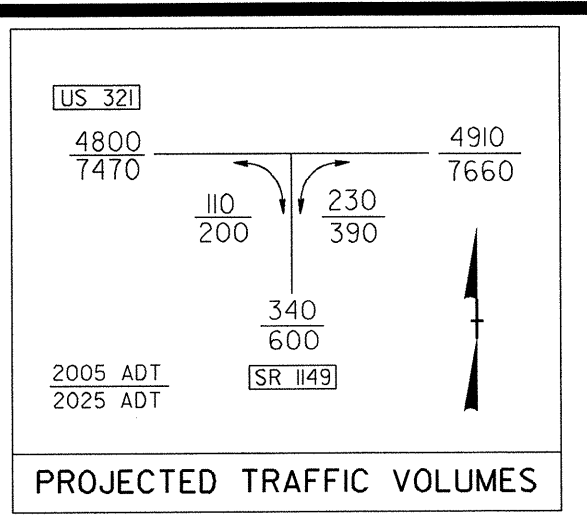


PLANS PREPARED BY:
RUMMEL KLEPPER & KAHL, LLP
consulting engineers
 5800 FARRINGTON PLACE SUITE 105
 RALEIGH, NORTH CAROLINA 27609-2960
 FOR
STATE OF NORTH CAROLINA
 DIVISION OF HIGHWAYS

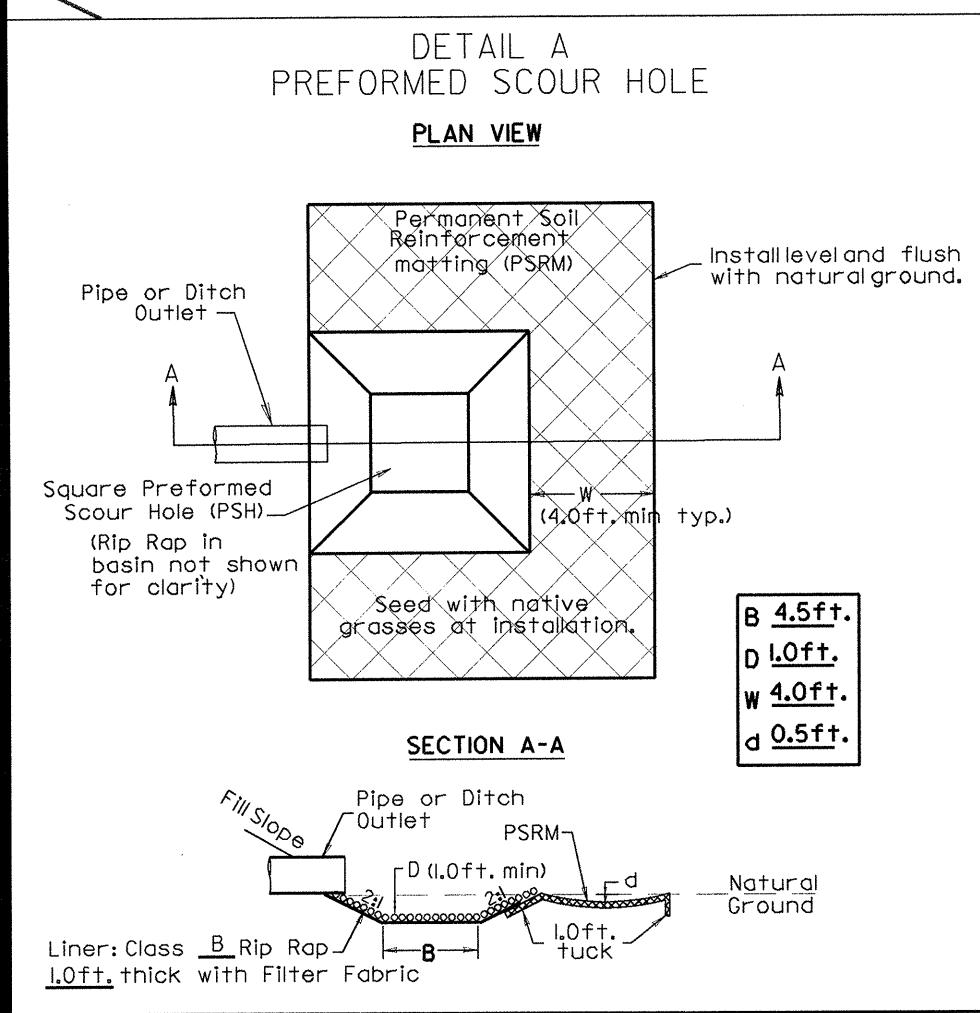


SEE SHEETS S- THRU S-
 FOR STRUCTURE PLANS

PROJECT REFERENCE NO. B-3922	SHEET NO. 2A
RW SHEET NO.	
ROADWAY DESIGN ENGINEER	HYDRAULICS ENGINEER

GEORGE MADISON ET AL
 DB 453 PG 386
 WB 94-E-166
 DB 112 PG 604

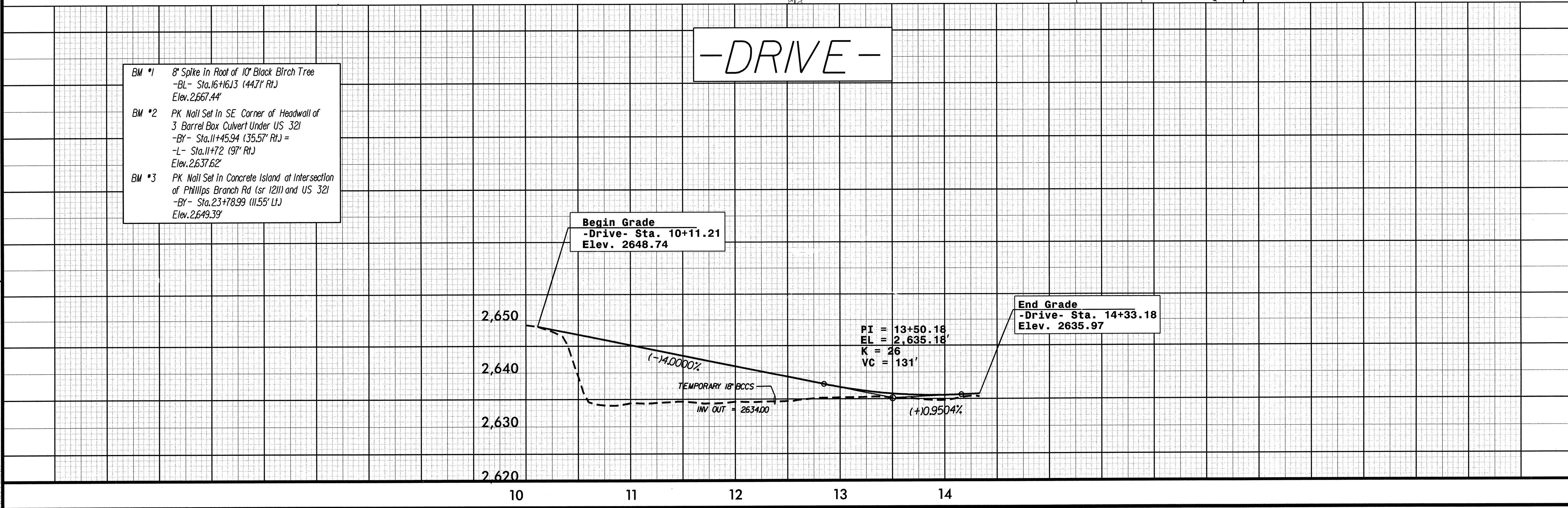
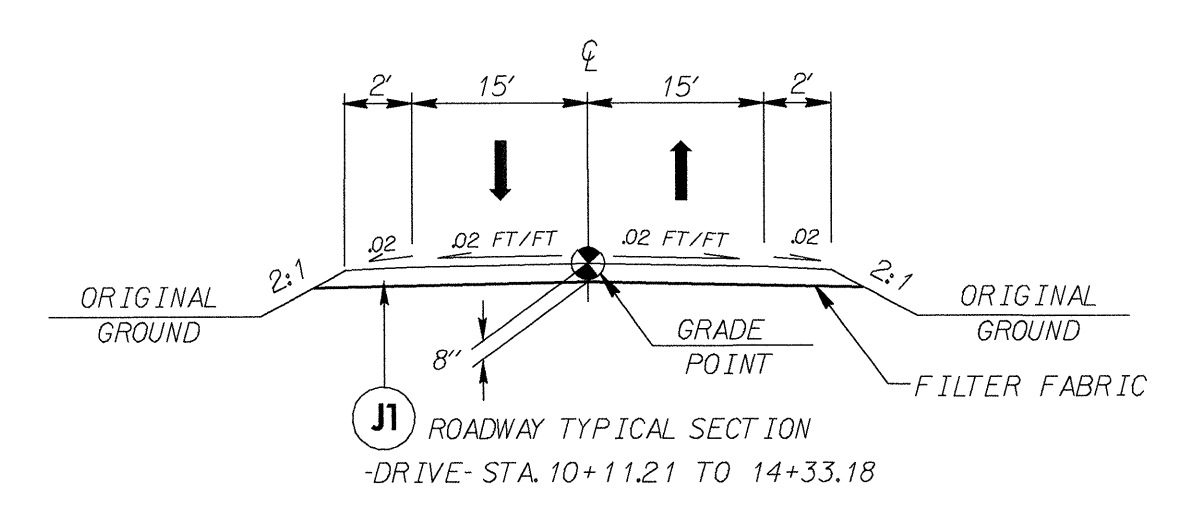
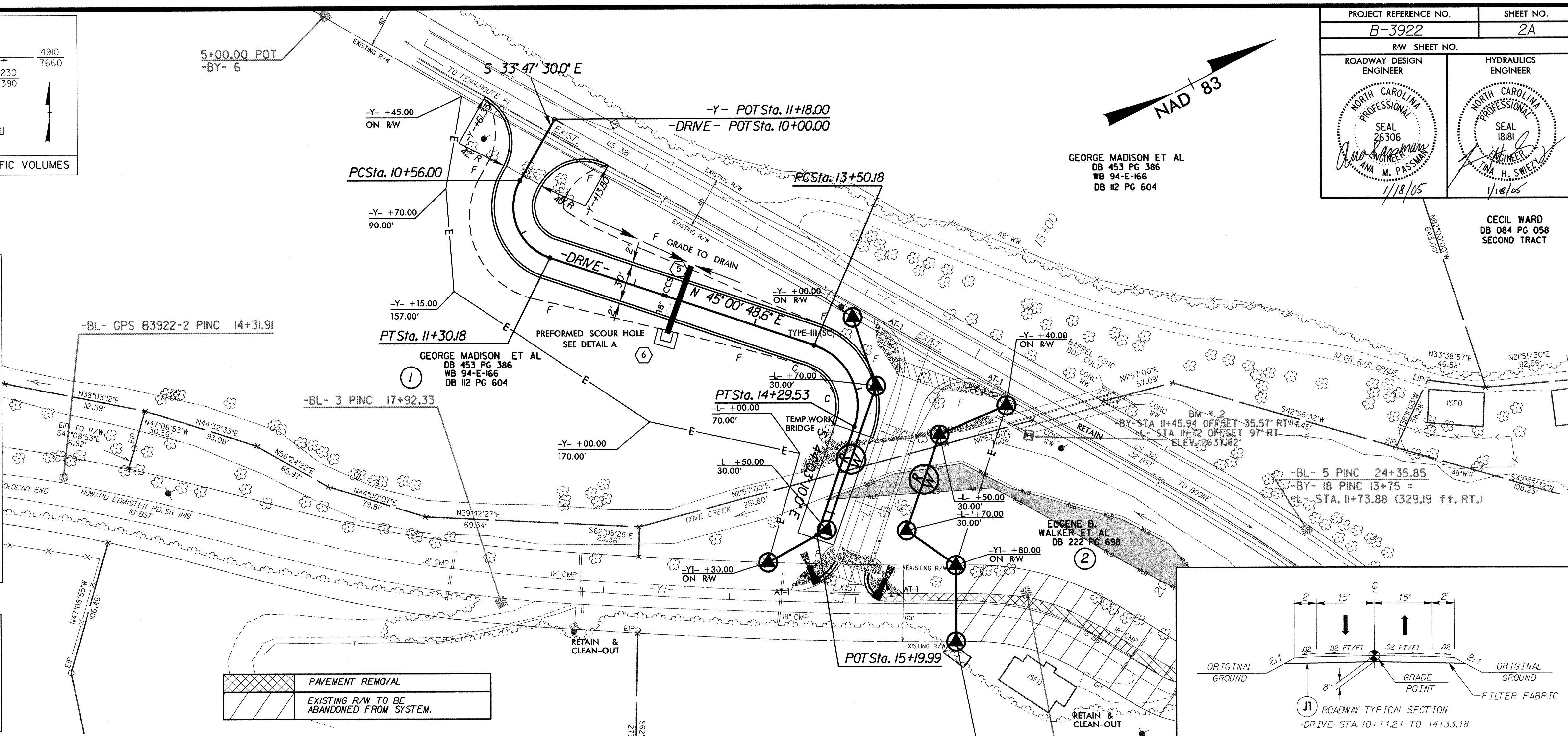
CECIL WARD
 DB 084 PG 058
 SECOND TRACT



-DRIVE- STA. 12+37.5 RT

-DRIVE- CURVE DATA

PI Sta 11+07.13	PI Sta 14+01.00
$\Delta = 101^\circ 11' 41.4''$ (LT)	$\Delta = 90^\circ 56' 01.4''$ (RT)
$D = 136' 25.067''$	$D = 114' 35.296''$
$L = 74.18'$	$L = 79.35'$
$T = 51.13'$	$T = 50.82'$
$R = 42.00'$	$R = 50.00'$



- BM #1 8" Spike in Root of 10" Black Birch Tree
 -BL- Sta. 16+16.13 (447' RT)
 Elev. 2,667.44'
- BM #2 PK Nail Set in SE Corner of Headwall of 3 Barrel Box Culvert Under US 321
 -BY- Sta. 11+45.94 (35.57' RT) =
 -L- Sta. 11+72 (97' RT)
 Elev. 2,637.62'
- BM #3 PK Nail Set in Concrete Island at Intersection of Phillips Branch Rd (sr 1211) and US 321
 -BY- Sta. 23+78.99 (11.55' LT)
 Elev. 2,649.39'

12/20/2004
 P:\roadway\proj\163922_rdu.pst_02a.dgn