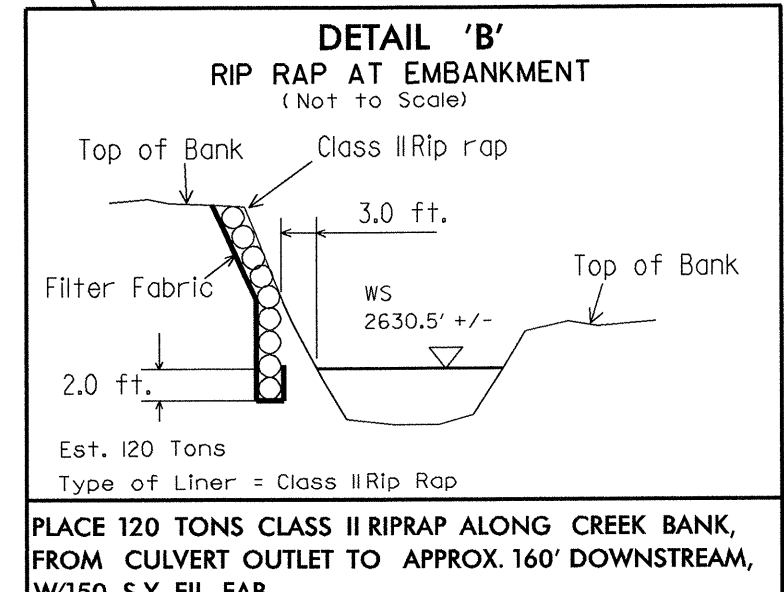


3/30/04

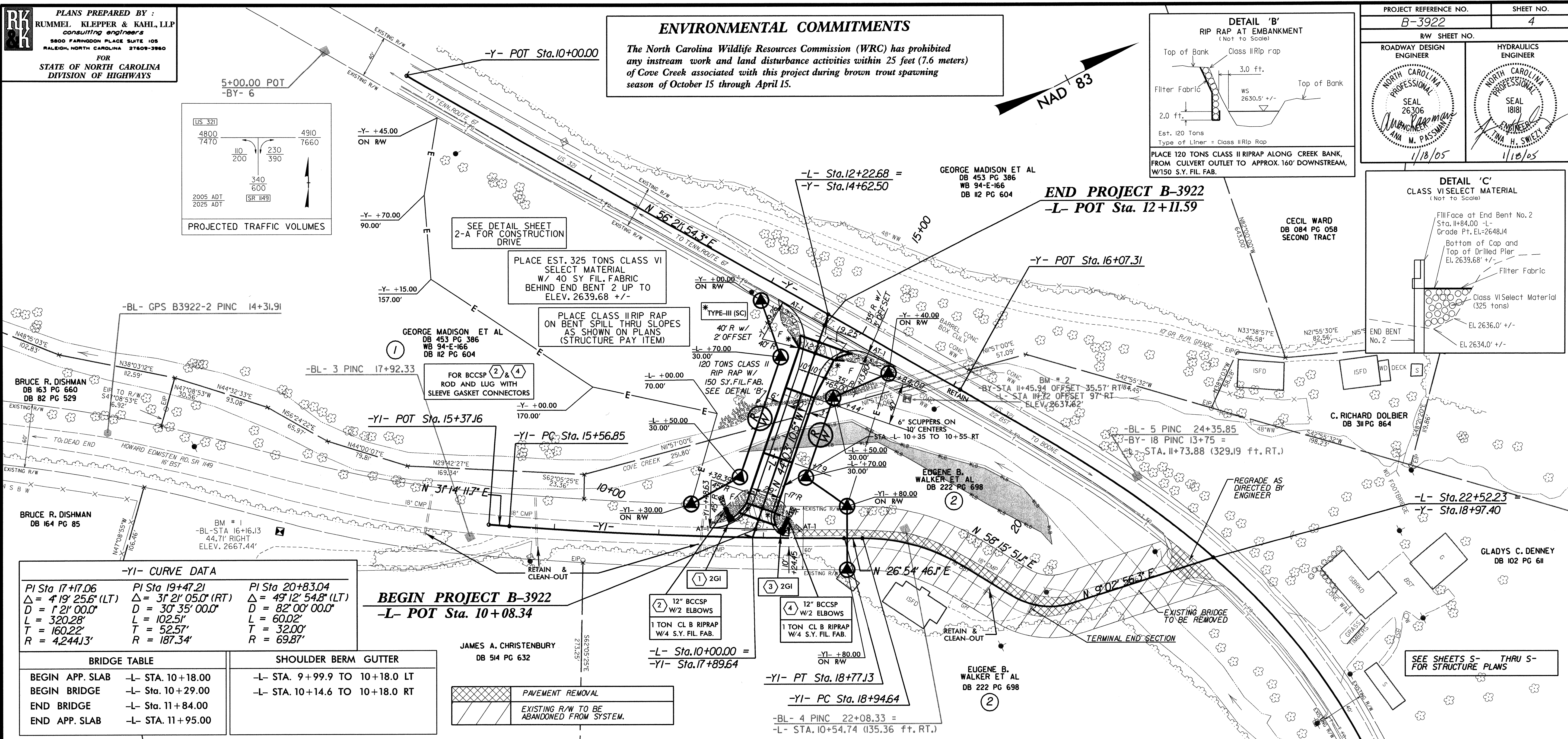
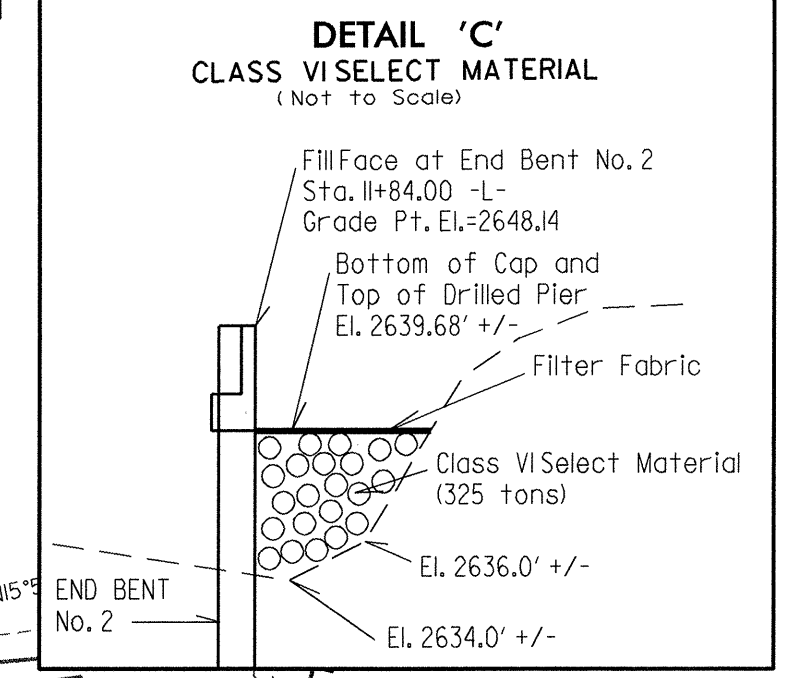
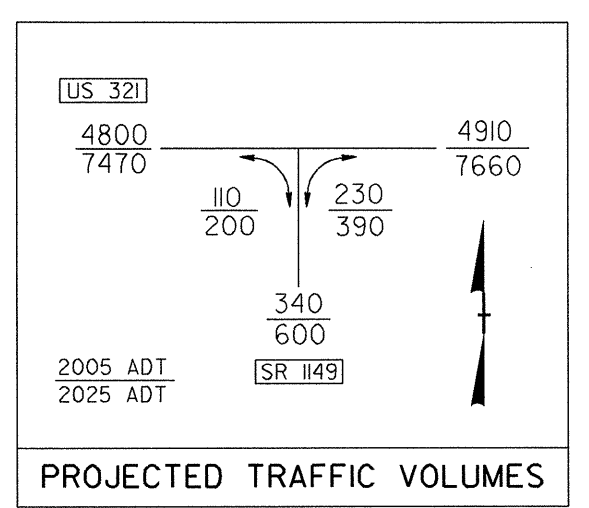
PLANS PREPARED BY:
RUMMEL, KLEPPER & KAHL, LLP
consulting engineers
5800 FARMWOOD PLACE SUITE 105
RALEIGH, NORTH CAROLINA 27609-3960
FOR
STATE OF NORTH CAROLINA
DIVISION OF HIGHWAYS

ENVIRONMENTAL COMMITMENTS

The North Carolina Wildlife Resources Commission (WRC) has prohibited any instream work and land disturbance activities within 25 feet (7.6 meters) of Cove Creek associated with this project during brown trout spawning season of October 15 through April 15.



PROJECT REFERENCE NO. B-3922	SHEET NO. 4
R/W SHEET NO.	
ROADWAY DESIGN ENGINEER NORTH CAROLINA PROFESSIONAL SEAL 26306 M. PASSMAN 1/18/05	HYDRAULICS ENGINEER NORTH CAROLINA PROFESSIONAL SEAL 1818 L. H. SWEET 1/18/05



-YI- CURVE DATA

PI Sta 17+17.06	PI Sta 19+47.21	PI Sta 20+83.04
$\Delta = 41^{\circ} 25' 00.0''$ (LT)	$\Delta = 31^{\circ} 21' 05.0''$ (RT)	$\Delta = 49^{\circ} 12' 54.8''$ (LT)
$D = 121' 00.0''$	$D = 30' 35' 00.0''$	$D = 82' 00' 00.0''$
$L = 320.28'$	$L = 102.51'$	$L = 60.02'$
$T = 160.22'$	$T = 52.57'$	$T = 32.00'$
$R = 4244.13'$	$R = 187.34'$	$R = 69.87'$

BRIDGE TABLE

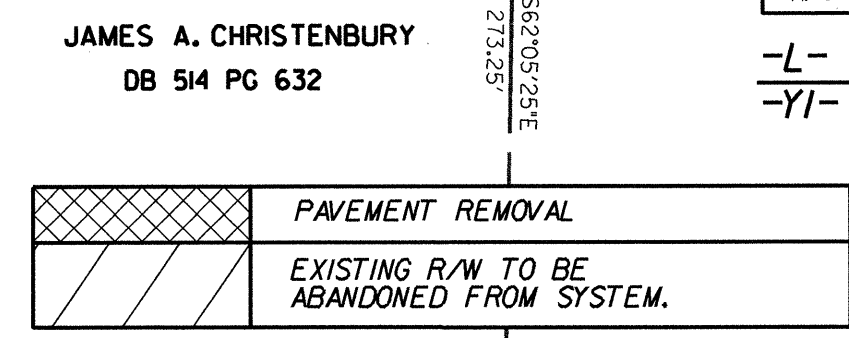
BEGIN APP. SLAB	-L- STA. 10+18.00
BEGIN BRIDGE	-L- Sta. 10+29.00
END BRIDGE	-L- Sta. 11+84.00
END APP. SLAB	-L- STA. 11+95.00

SHOULDER BERM GUTTER

-L- STA. 9+99.9 TO 10+18.0 LT
-L- STA. 10+14.6 TO 10+18.0 RT

BEGIN PROJECT B-3922

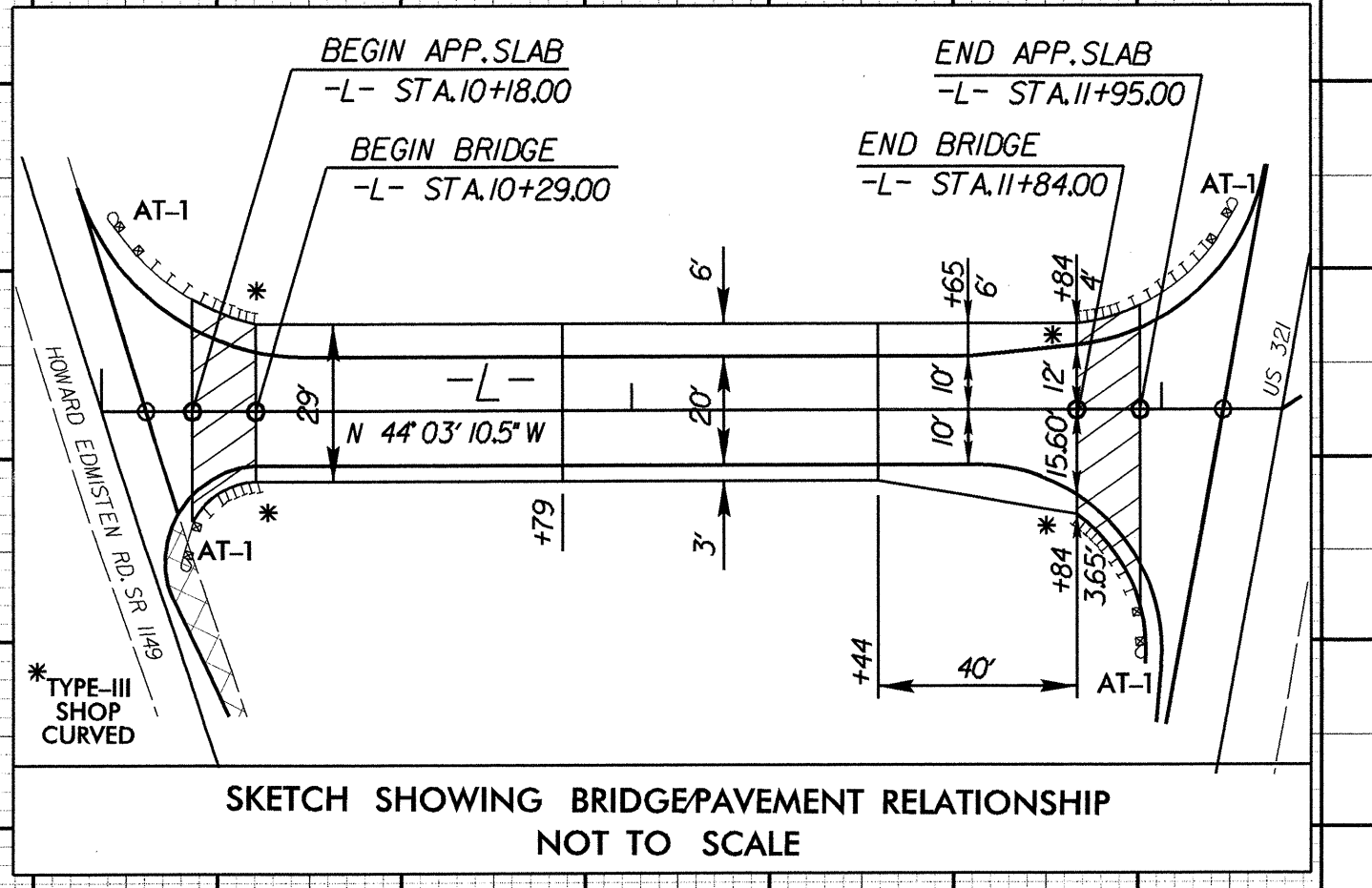
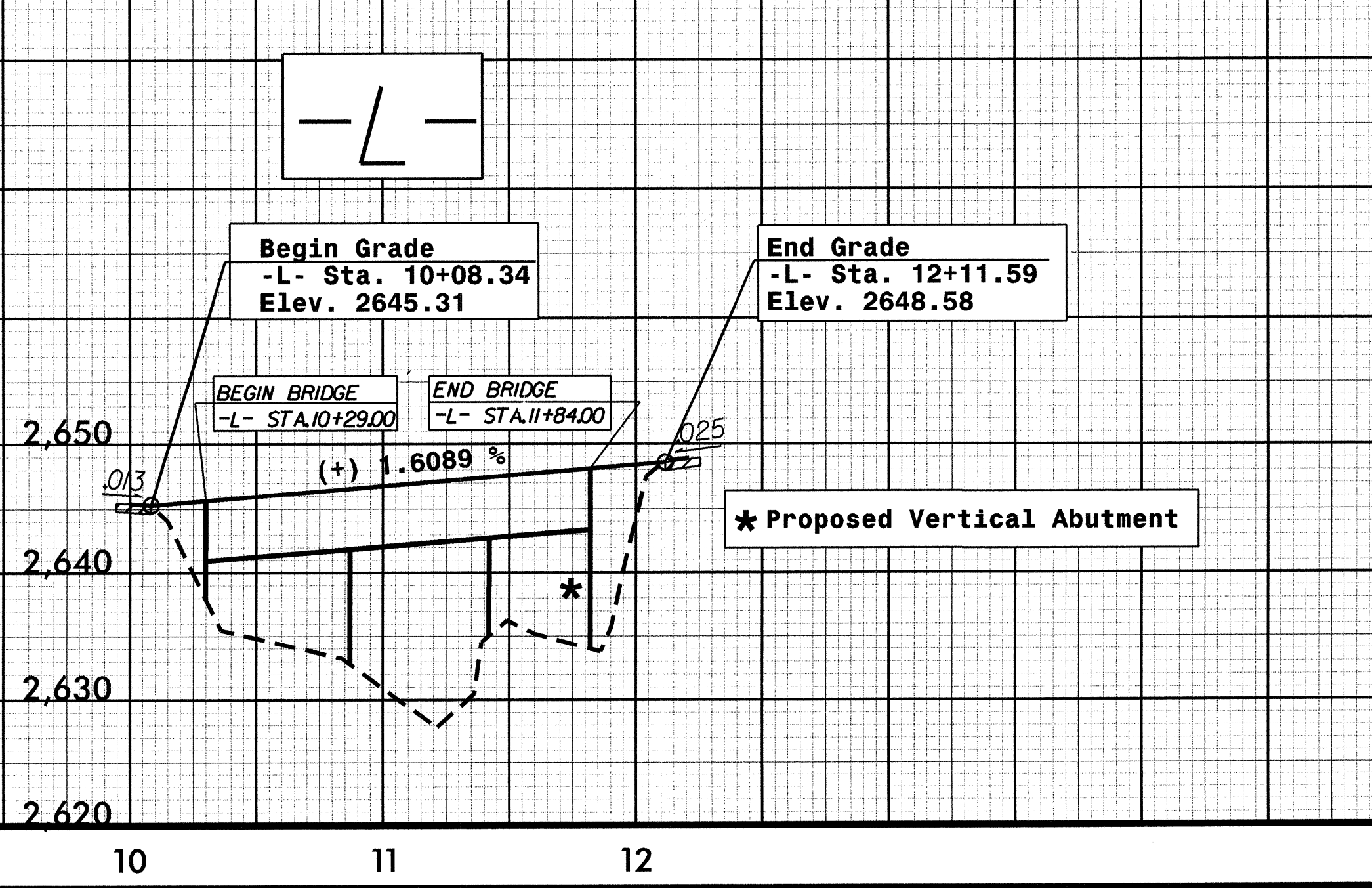
-L- POT Sta. 10+08.34



- BM #1 8" Spike In Root of 10" Black Birch Tree
-BL- Sta. 16+16J3 (44.7' Rt.)
Elev. 2667.44'
- BM #2 PK Nail Set In SE Corner of Headwall of 3 Barrel Box Culvert Under US 321
-BY- Sta. 11+45.94 (35.57' Rt.) =
-L- Sta. 11+72 (97' Rt.)
Elev. 2637.62'
- BM #3 PK Nail Set In Concrete Island at Intersection of Phillips Branch Rd (sr 1211) and US 321
-BY- Sta. 23+78.99 (11.55' Lt.)
Elev. 2649.39'

BRIDGE DATA
BRIDGE #316
OVER COVE CREEK

DESIGN Q =	4600 cfs
DESIGN FREQ =	25 yr
DESIGN EL =	2639.8 ft
BASE FLOOD Q =	6,900 cfs
BASE FLOOD FREQ =	100 yr
BASE FLOOD EL =	2641.3 ft
OT Q =	13,300 cfs
OT FREQ =	> 500 yr
OT EL =	2645.3 ft



REVISIONS

01/17/2005
F:\roadway\proj\B3922_rdy.psh_04.dgn