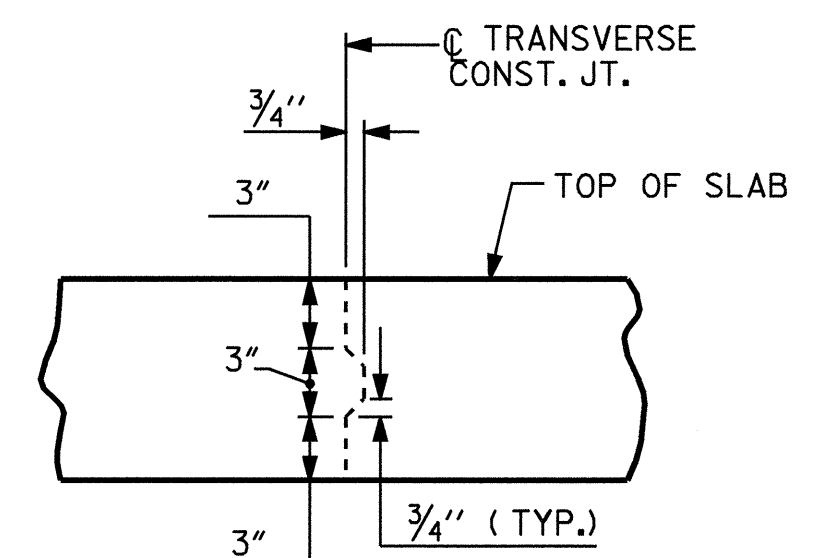


PLAN OF SPAN A

NOTES:
 FOR PARAPET REINFORCING STEEL AND DETAILS, SEE "CONCRETE PARAPET DETAILS" SHEETS.
 SEE "TYPICAL SECTIONS" SHEETS FOR DETAILS OF DIAPHRAGMS.

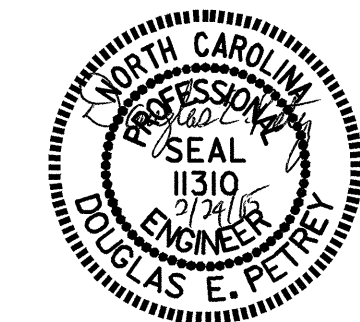


TRANSVERSE CONSTRUCTION JOINT DETAIL

NOTE: REINFORCING STEEL IN SLAB NOT SHOWN. LONGITUDINAL REINFORCING STEEL SHALL BE CONTINUOUS THRU JOINT

PROJECT NO. B-3922
WATAUGA COUNTY
 STATION: 11+06.50 -L-

STATE OF NORTH CAROLINA
 DEPARTMENT OF TRANSPORTATION
 RALEIGH
 SUPERSTRUCTURE
 PLAN OF SPAN A



REVISIONS						SHEET NO.
NO.	BY:	DATE:	NO.	BY:	DATE:	S-7
1			3			TOTAL SHEETS
2			4			41

DRAWN BY : A.R.CHESSON DATE : 7-04
 CHECKED BY : B.N. GRADY DATE : 9-04