

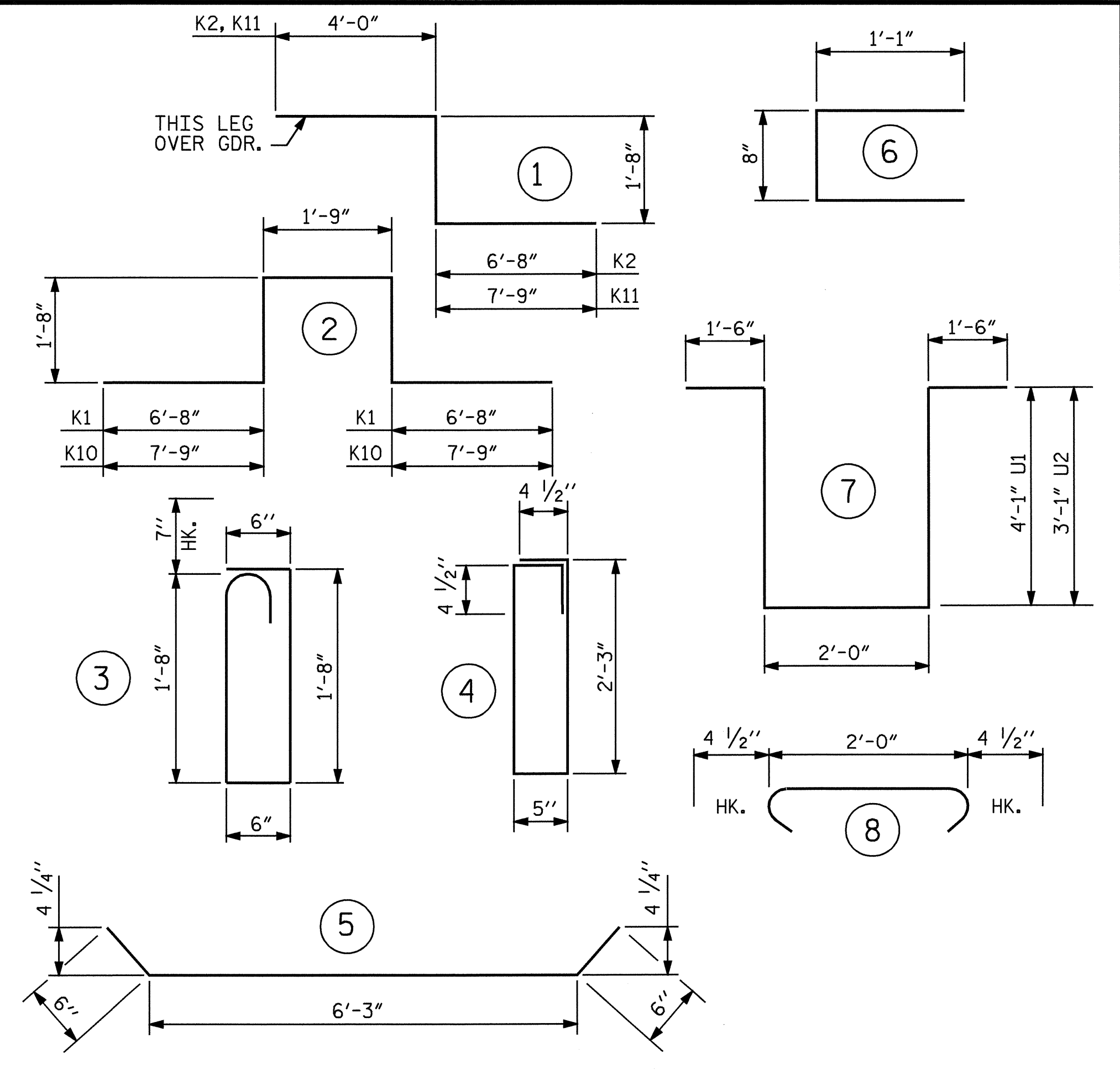
SUPERSTRUCTURE REINFORCING STEEL LENGTHS ARE BASED ON THE FOLLOWING MINIMUM SPLICE LENGTHS

BAR SIZE	SUPERSTRUCTURE EXCEPT APPROACH SLABS, PARAPET, AND BARRIER RAIL		APPROACH SLABS		PARAPET AND BARRIER RAIL
	EPOXY COATED	UNCOATED	EPOXY COATED	UNCOATED	
#4	2'-0"	1'-9"	2'-0"	1'-9"	2'-9"
#5	2'-6"	2'-2"	2'-6"	2'-2"	3'-5"
#6	3'-0"	2'-7"	3'-10"	2'-7"	4'-4"
#7	5'-3"	3'-6"	—	—	—
#8	6'-10"	4'-7"	—	—	—

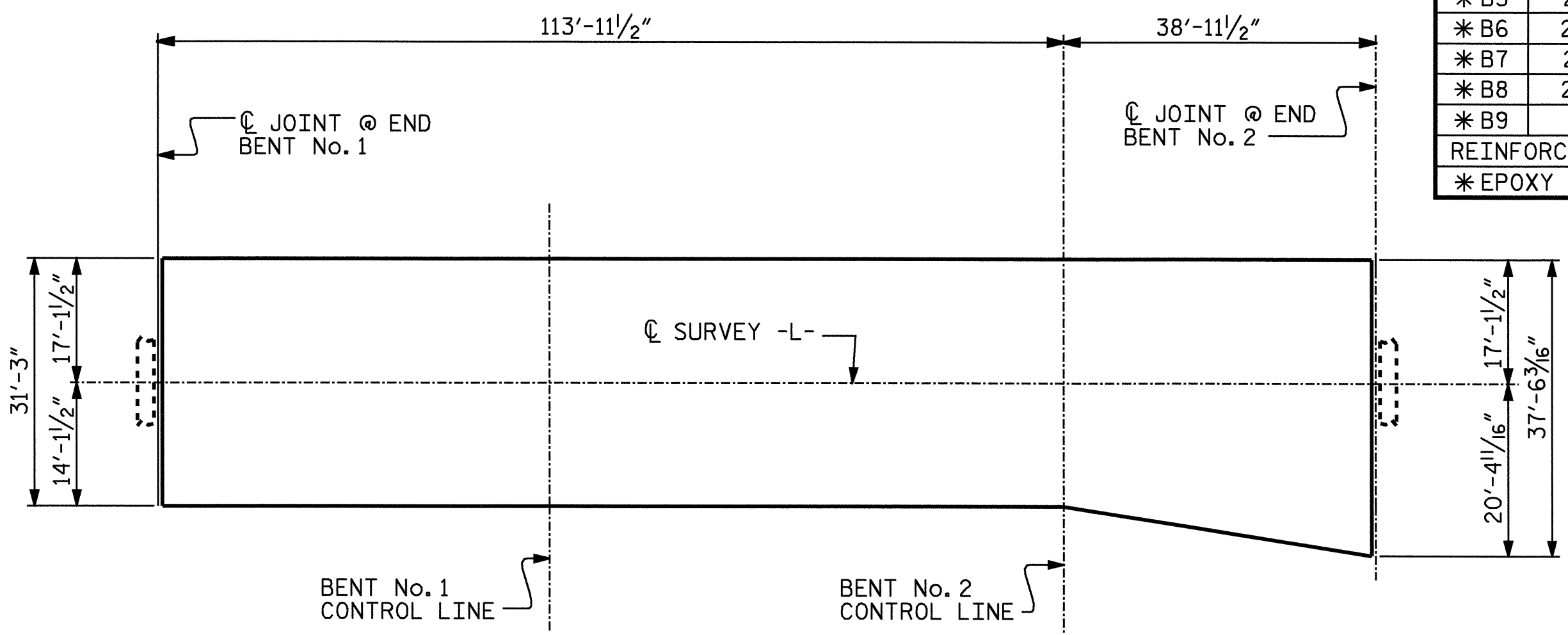
BILL OF MATERIAL

SPANS A, B & C											
BAR	NO.	SIZE	TYPE	LENGTH	WEIGHT	BAR	NO.	SIZE	TYPE	LENGTH	WEIGHT
*A1	234	#5	STR	30'-11"	7546	*B10	1	#4	STR	23'-9"	16
A2	234	#5	STR	30'-11"	7546	*B11	1	#4	STR	14'-5"	10
						*B12	1	#4	STR	5'-0"	3
*A101	8	#5	STR	31'-4"	261	B13	30	#5	STR	38'-9"	1212
*A102	8	#5	STR	32'-0"	267	B14	9	#5	STR	33'-11"	318
*A103	8	#5	STR	32'-8"	273	B15	12	#5	STR	52'-4"	655
*A104	8	#5	STR	33'-3"	277	B16	4	#5	STR	39'-2"	163
*A105	8	#5	STR	33'-11"	283	*B17	6	#4	STR	27'-1"	109
*A106	8	#5	STR	34'-7"	289	*B18	5	#4	STR	24'-9"	83
*A107	8	#5	STR	35'-3"	294	*B19	2	#4	STR	20'-7"	27
*A108	8	#5	STR	35'-10"	299						
*A109	8	#5	STR	36'-6"	305	*K1	4	#8	2	18'-5"	197
						*K2	4	#8	1	12'-4"	132
A201	8	#5	STR	31'-4"	261	K3	8	#4	STR	25'-0"	134
A202	8	#5	STR	32'-0"	267	K4	24	#4	STR	7'-4"	118
A203	8	#5	STR	32'-8"	273	K5	12	#4	STR	6'-7"	53
A204	8	#5	STR	33'-3"	277	K6	12	#4	STR	4'-11"	39
A205	8	#5	STR	33'-11"	283	K7	12	#5	5	7'-3"	91
A206	8	#5	STR	34'-7"	289	K8	12	#5	STR	6'-9"	84
A207	8	#5	STR	35'-3"	294	*K9	6	#6	STR	8'-7"	77
A208	8	#5	STR	35'-10"	299	*K10	4	#8	2	20'-7"	220
A209	8	#5	STR	36'-6"	305	*K11	4	#8	1	13'-5"	143
B1	68	#5	STR	59'-1"	4190	*S1	48	#5	3	4'-11"	246
*B2	42	#4	STR	16'-5"	461	*S2	27	#4	6	2'-10"	51
*B3	21	#7	STR	44'-6"	1910	S3	132	#4	8	2'-9"	242
*B4	20	#7	STR	17'-3"	705	S4	42	#4	4	6'-1"	171
*B5	21	#7	STR	41'-6"	1781						
*B6	20	#7	STR	15'-9"	644	U1	36	#4	7	13'-2"	317
*B7	21	#4	STR	20'-0"	281	U2	12	#4	7	11'-2"	90
*B8	22	#4	STR	23'-9"	349						
*B9	1	#7	STR	11'-4"	23						
REINFORCING STEEL = 17971 LBS											
*EPOXY COATED REINF. STEEL = 17562 LBS											

BAR TYPES



ALL BAR DIMENSIONS ARE OUT TO OUT



LAYOUT FOR COMPUTING AREA OF REINFORCED CONCRETE DECK SLAB
(SQ. FT. = 4,901)

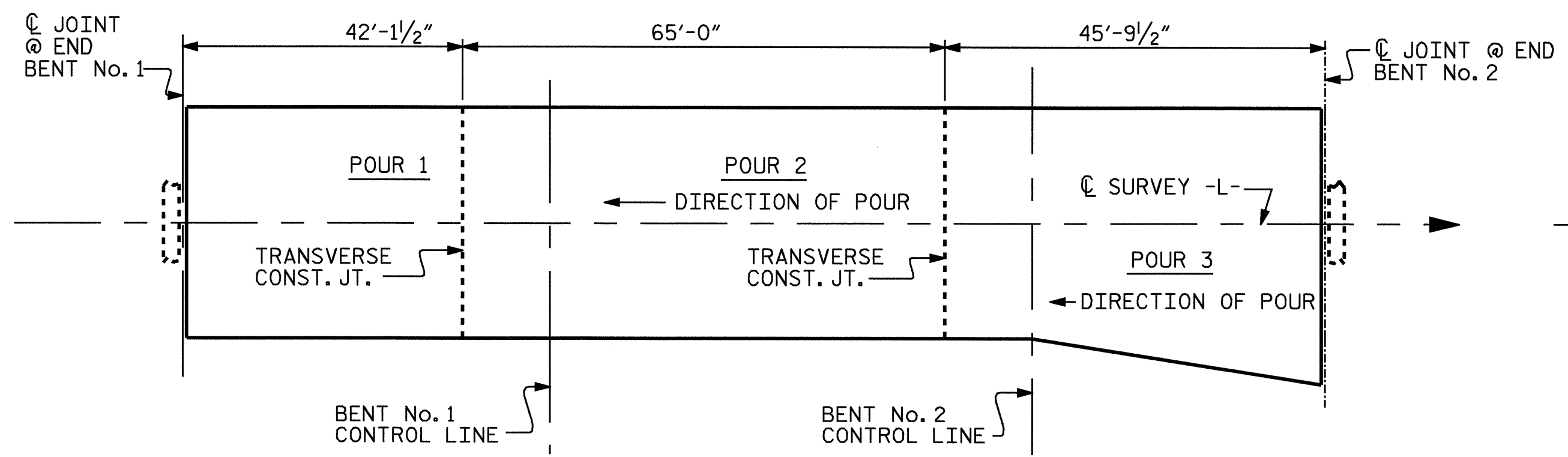
GROOVING BRIDGE FLOORS

APPROACH SLABS	723	SQ.FT.
BRIDGE DECK	4,061	SQ.FT.
TOTAL	4,784	SQ.FT.

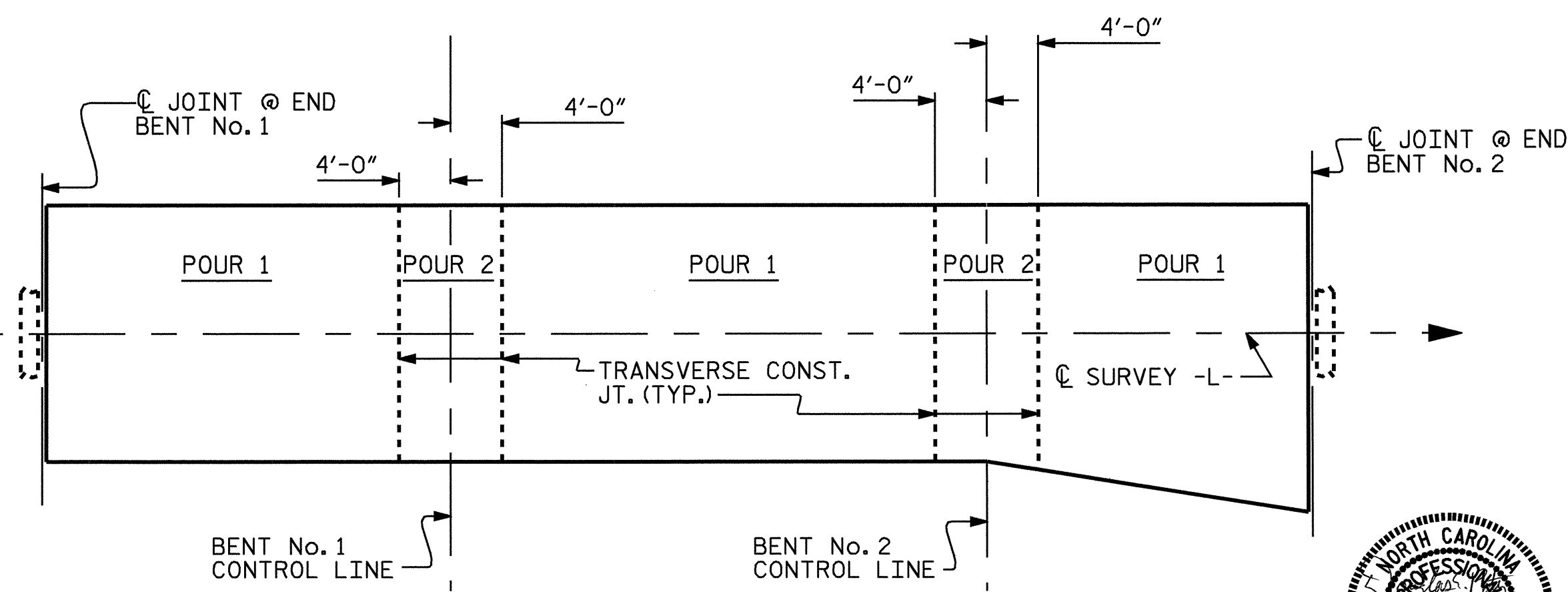
SUPERSTRUCTURE BILL OF MATERIAL

SPANS A, B & C	CLASS AA CONCRETE (CU. YDS.)	REINFORCING STEEL (LBS.)	EPOXY COATED REINFORCING STEEL (LBS.)
POUR 1	45.1		
POUR 2	75.4		
POUR 3	59.9		
** TOTALS	180.4	17,971	17,562

** QUANTITIES FOR CONCRETE PARAPET ARE NOT INCLUDED.



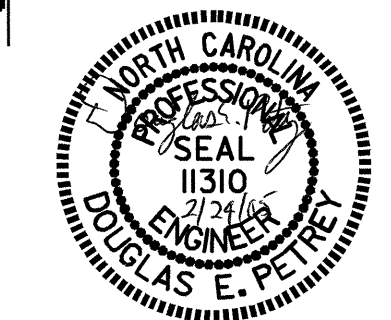
POUR SEQUENCE



OPTIONAL POUR SEQUENCE

POUR 2 CANNOT BE STARTED UNTIL BOTH ADJACENT POUR 1'S HAVE REACHED A MINIMUM OF 3000 PSI.

PROJECT NO. B-3922
WATAUGA COUNTY
STATION: 11+06.50 -L-



STATE OF NORTH CAROLINA
DEPARTMENT OF TRANSPORTATION
RALEIGH
STANDARD
SUPERSTRUCTURE
BILL OF MATERIAL

ASSEMBLED BY : A.R.CHESSON	DATE: 7-04
CHECKED BY : B.N.GRADY	DATE: 9-04
DRAWN BY : JMB	5/87
CHECKED BY : SJD	9/87
REV. 6/1/94	EEM/GRP

REVISIONS					SHEET NO.
NO.	BY:	DATE:	NO.	BY:	DATE:
1			3		
2			4		

TOTAL SHEETS: 41