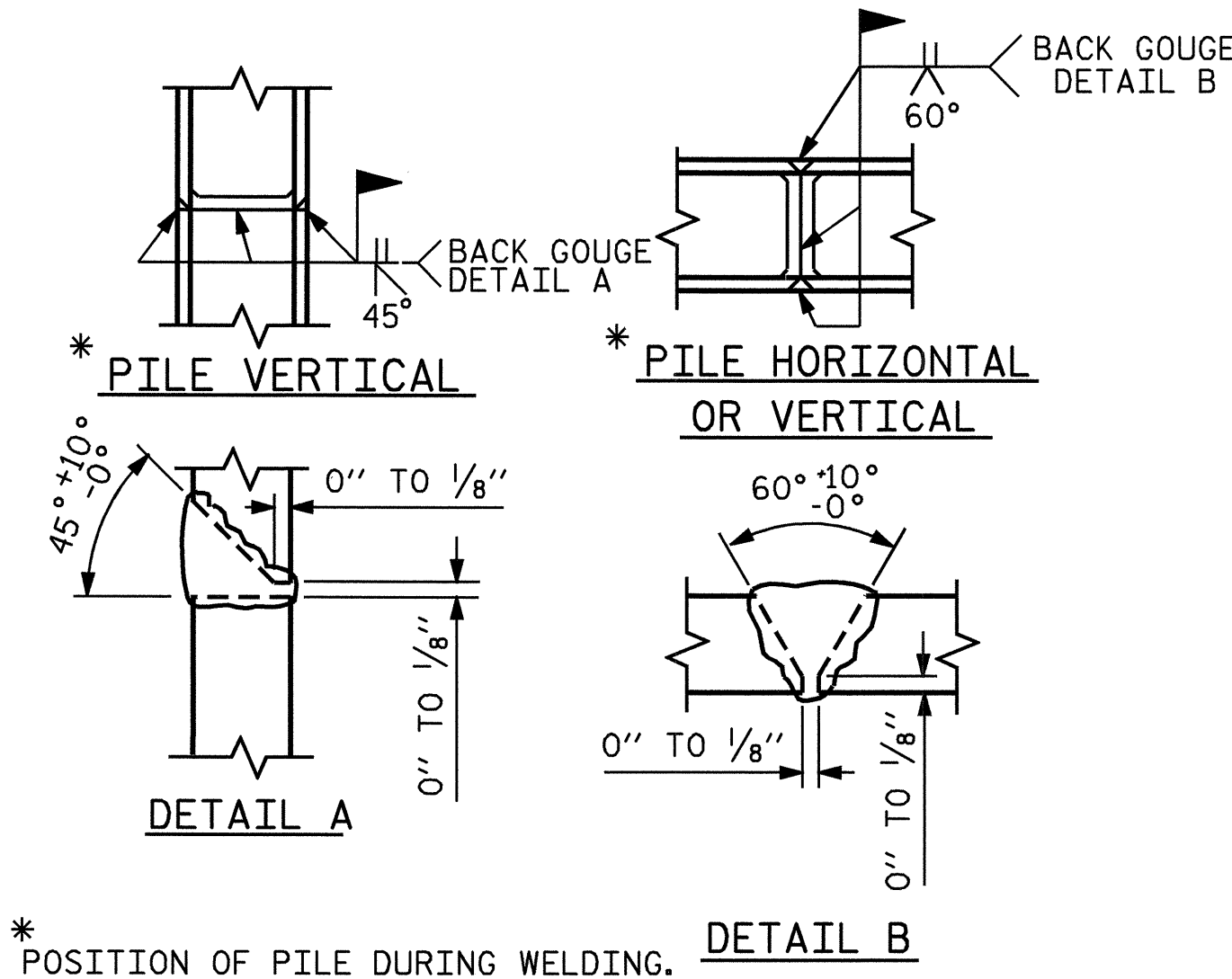


BAGGED STONE AND PIPE SHALL BE PLACED IMMEDIATELY AFTER COMPLETION OF END BENT EXCAVATION. PIPE MAY BE EITHER CONCRETE, CORRUGATED STEEL, CORRUGATED ALUMINUM ALLOY, OR CORRUGATED PLASTIC. PERFORATED PIPE WILL NOT BE ALLOWED.

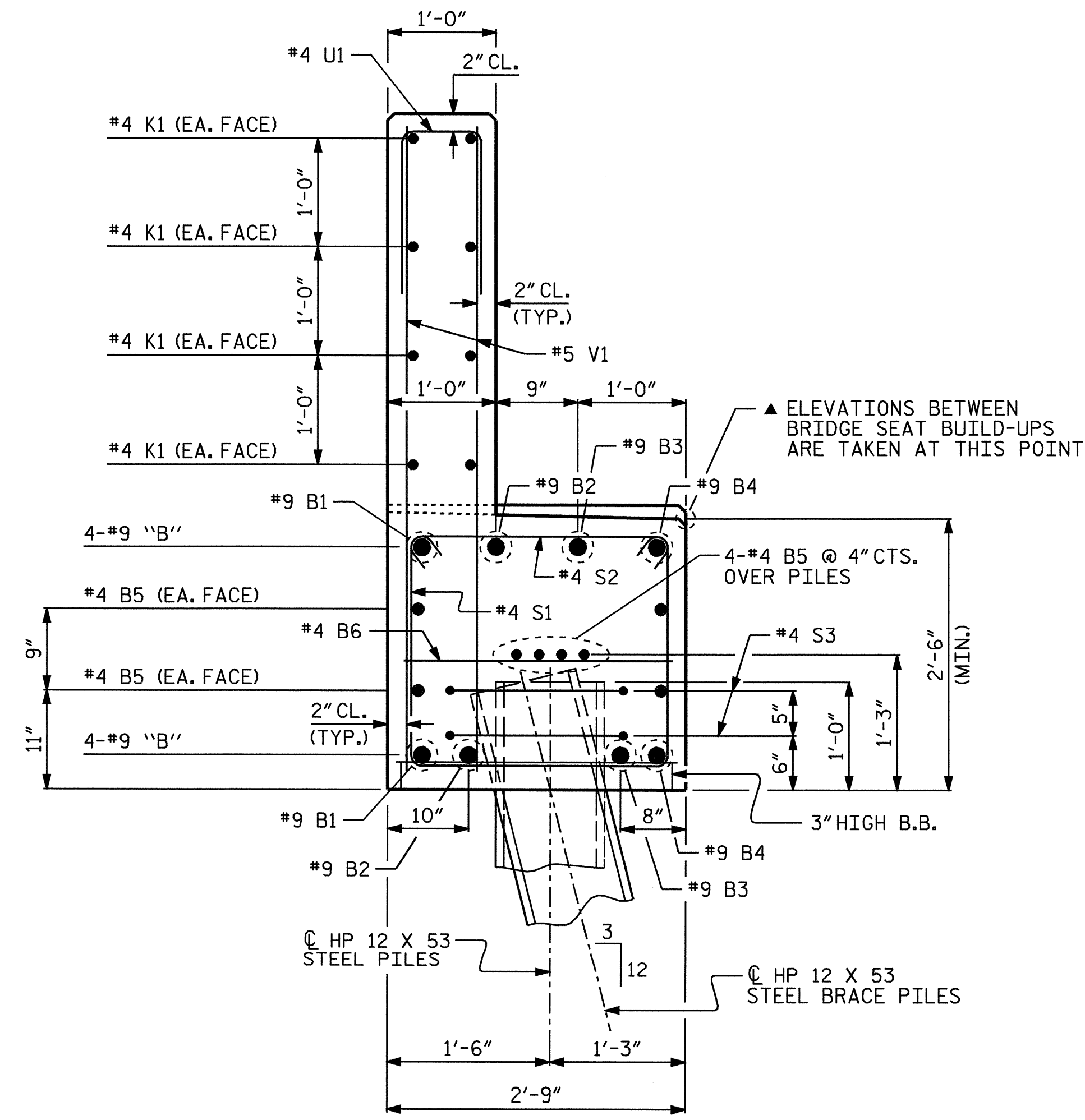
BAGGED STONE SHALL REMAIN IN PLACE UNTIL THE ENGINEER DIRECTS THAT IT BE REMOVED. THE CONTRACTOR SHALL REMOVE AND DISPOSE OF SILT ACCUMULATIONS AT BAGGED STONE WHEN SO DIRECTED BY THE ENGINEER. BAGS SHALL BE REMOVED AND REPLACED WHENEVER THE ENGINEER DETERMINES THAT THEY HAVE DETERIORATED AND LOST THEIR EFFECTIVENESS.

NO SEPARATE PAYMENT WILL BE MADE FOR THIS WORK AND THE ENTIRE COST OF THIS WORK SHALL BE INCLUDED IN THE UNIT CONTRACT PRICE BID FOR THE SEVERAL PAY ITEMS.

TEMPORARY DRAINAGE AT END BENT

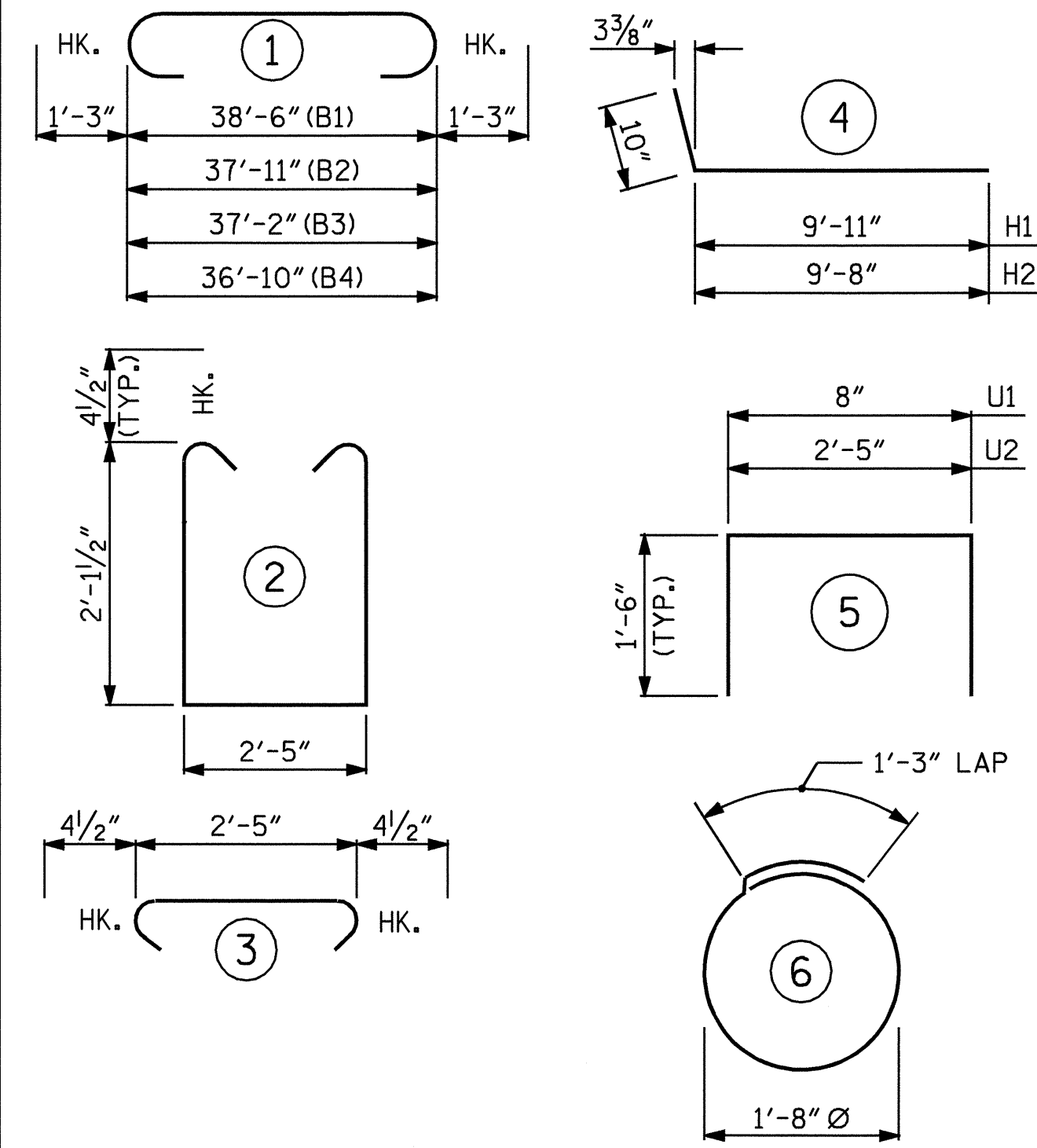


PILE SPLICE DETAILS



SECTION A-A

BAR TYPES



ALL BAR DIMENSIONS ARE OUT TO OUT.

BILL OF MATERIAL

END BENT No. 1

BAR	NO.	SIZE	TYPE	LENGTH	WEIGHT
B1	2	9	1	41'-0"	279
B2	2	9	1	40'-5"	275
B3	2	9	1	39'-8"	270
B4	2	9	1	39'-4"	267
B5	16	4	STR	20'-7"	220
B6	9	4	STR	2'-5"	15
B7	8	4	STR	3'-0"	16
H1	18	5	4	10'-9"	202
H2	18	5	4	10'-6"	197
K1	16	4	STR	20'-7"	220
K2	8	4	STR	3'-9"	20
S1	38	4	2	7'-5"	188
S2	38	4	3	3'-2"	80
S3	14	4	6	6'-6"	61
U1	31	4	5	3'-8"	76
U2	8	4	5	5'-5"	29
V1	62	5	STR	5'-8"	366
V2	62	5	STR	7'-5"	480

REINFORCING STEEL 3,261 LBS

CLASS A CONCRETE BREAKDOWN:

POUR #1 (CAP & LOWER PART OF WINGS)	11.9 CU. YDS.
POUR #2 (BACKWALL & UPPER PART OF WINGS)	9.4 CU. YDS.
TOTAL:	21.3 CU. YDS.

HP 12 X 53 STEEL PILES
No. 7 105.0 LIN. FT.

STEEL PILE POINTS No. 7

PROJECT NO. B-3922
WATAUGA COUNTY
STATION: 11+06.50 -L-

SHEET 3 OF 3

STATE OF NORTH CAROLINA
DEPARTMENT OF TRANSPORTATION
RALEIGH

SUBSTRUCTURE
END BENT No. 1



DRAWN BY : P.C. BREWER DATE : 2/17/05
CHECKED BY : D.E. PETREY DATE : 2/18/05

24-FEB-2005 11:19
W:\squadw\lb3922\pbrewer\Microst\atlon\B3922_sd_EB1_01.dgn
achesson

REVISIONS						SHEET NO.
NO.	BY:	DATE:	NO.	BY:	DATE:	S-24
1			3			TOTAL SHEETS
2			4			41