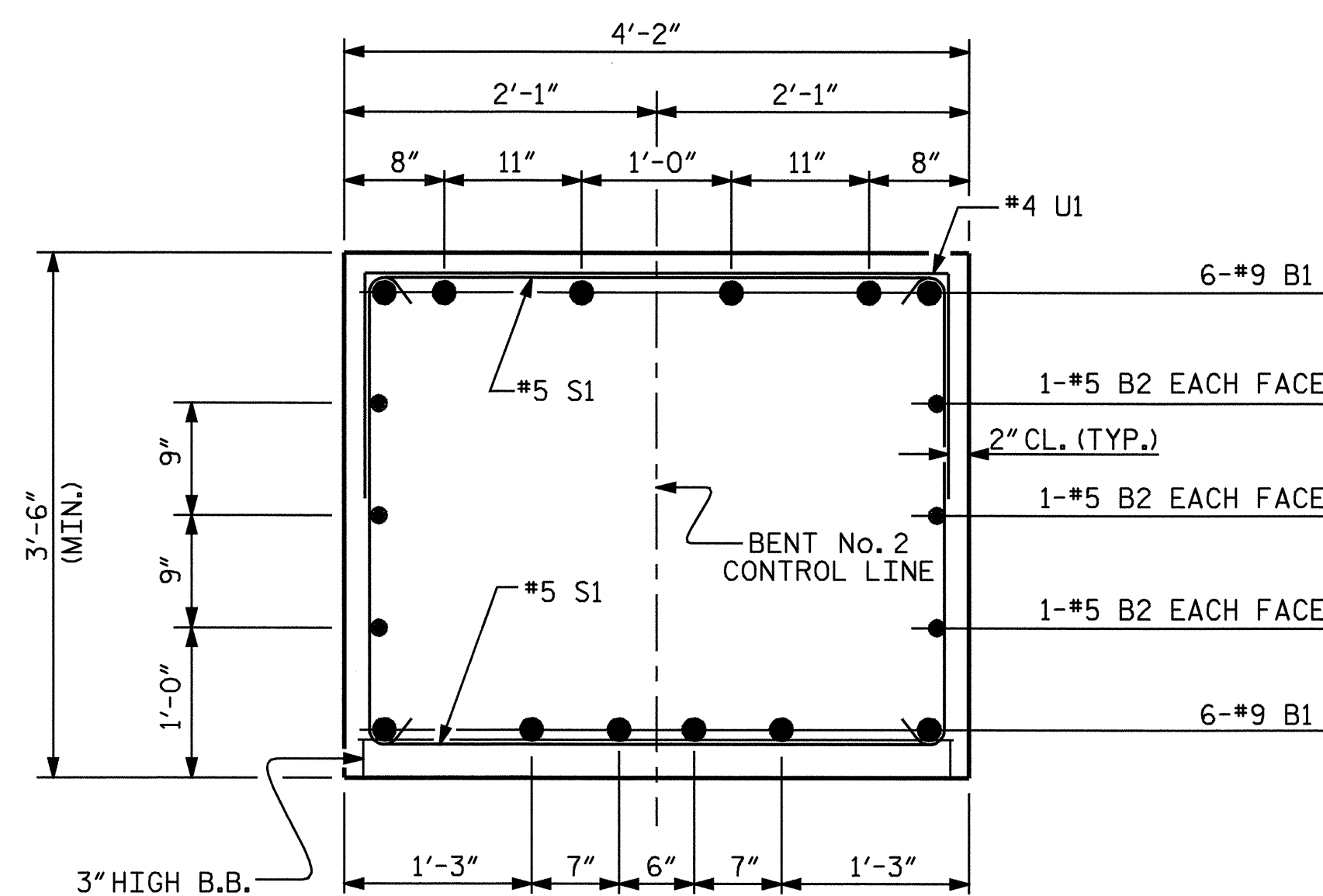
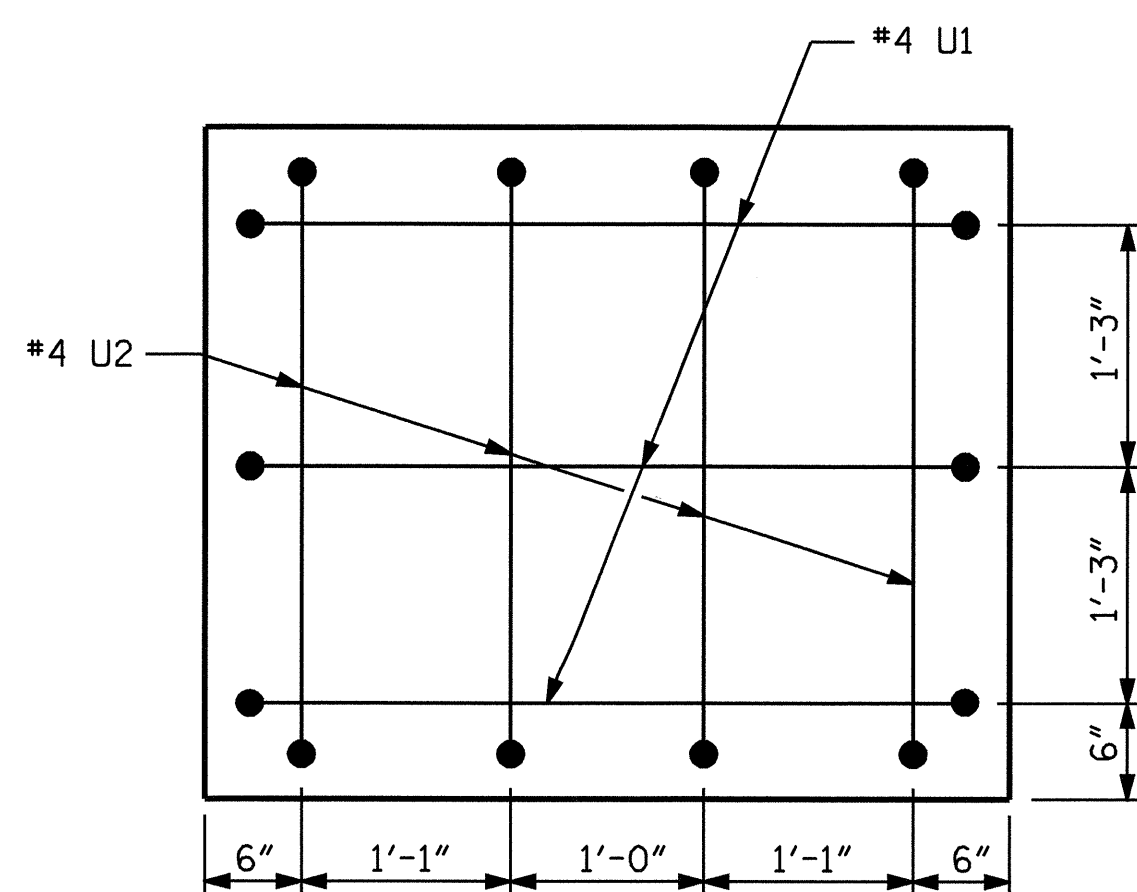


PLAN OF COLUMNS & DRILLED PIERS

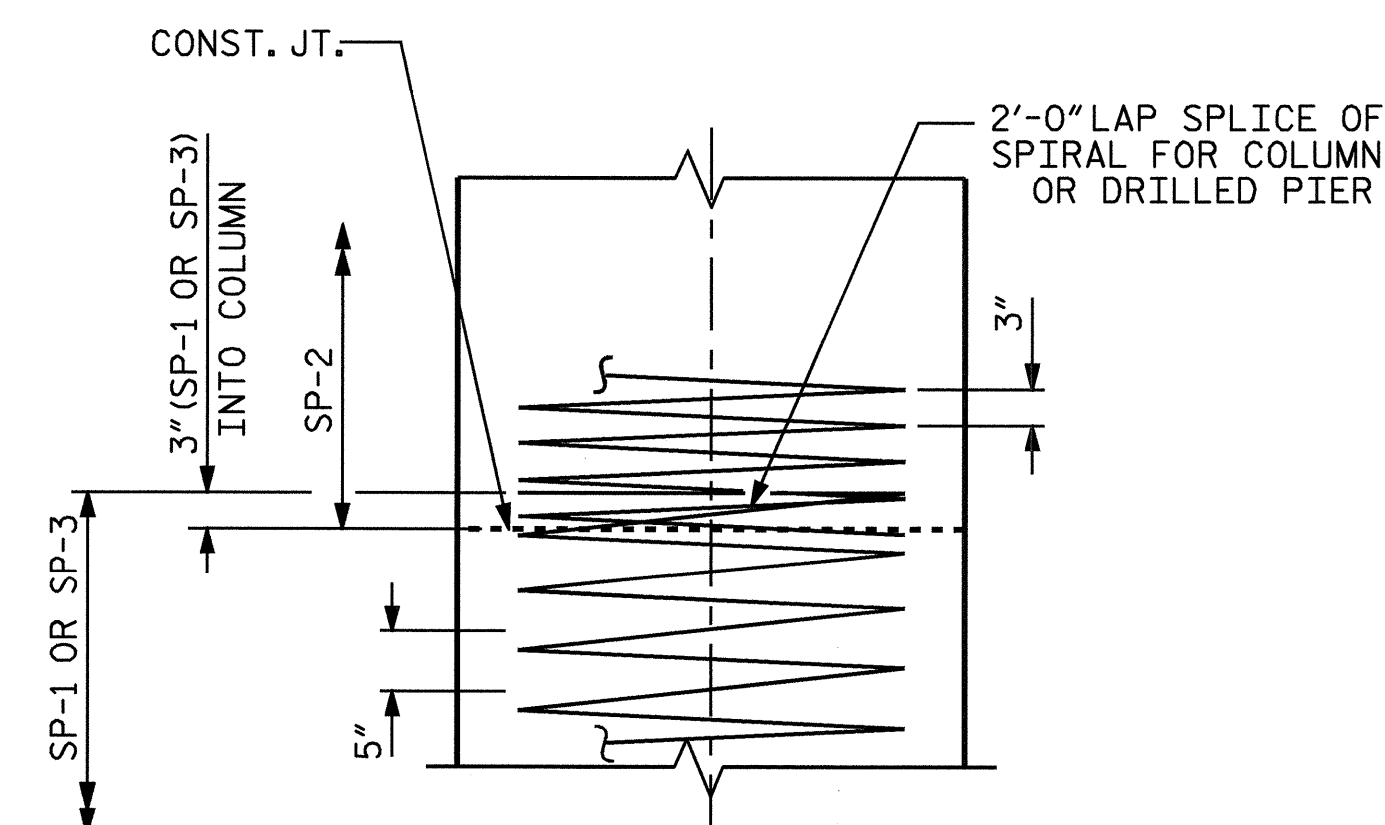
REINFORCING STEEL, DIMENSIONS, AND DETAILS ARE TYPICAL FOR ALL DRILLED PIERS & COLUMNS



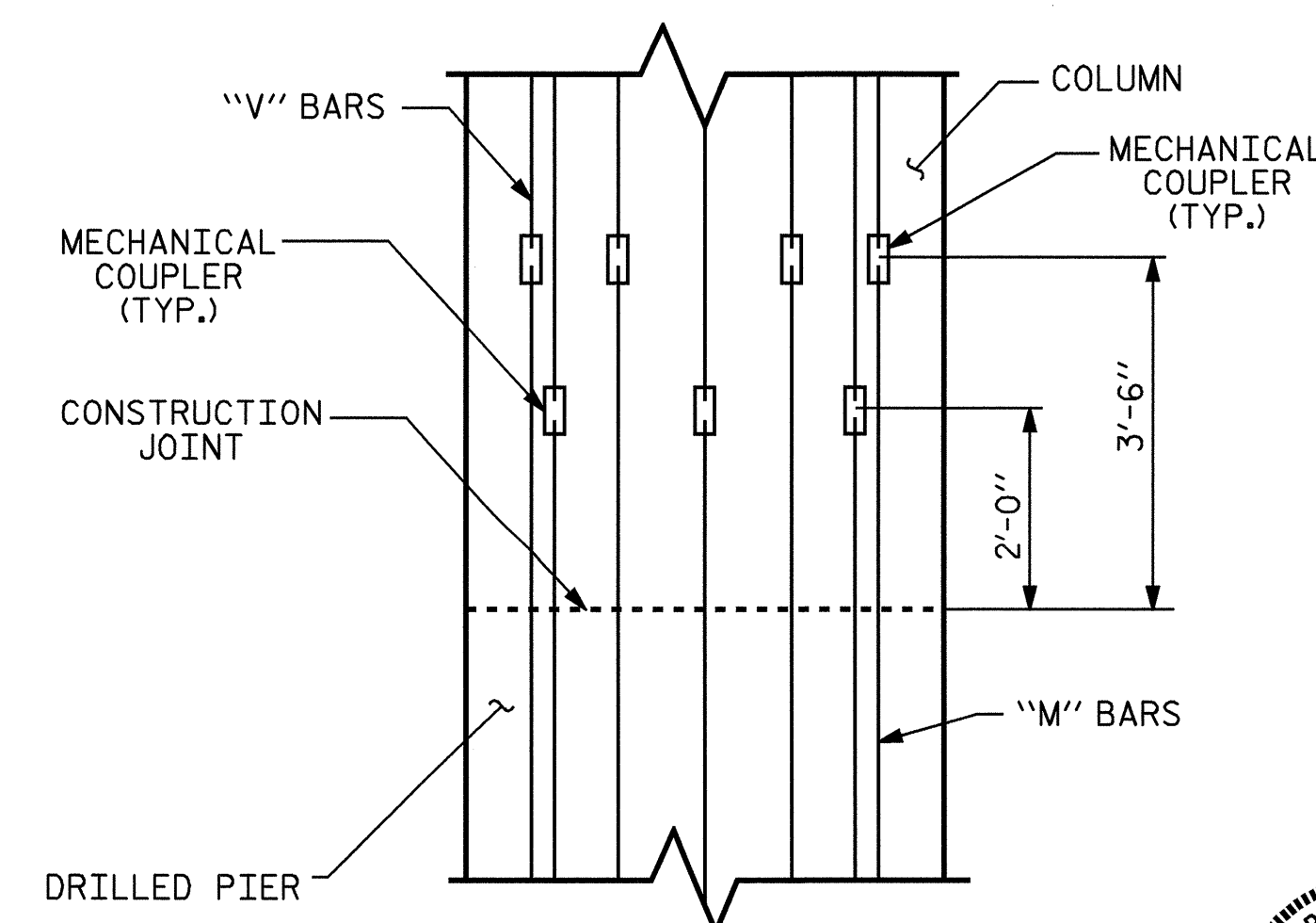
SECTION A-A



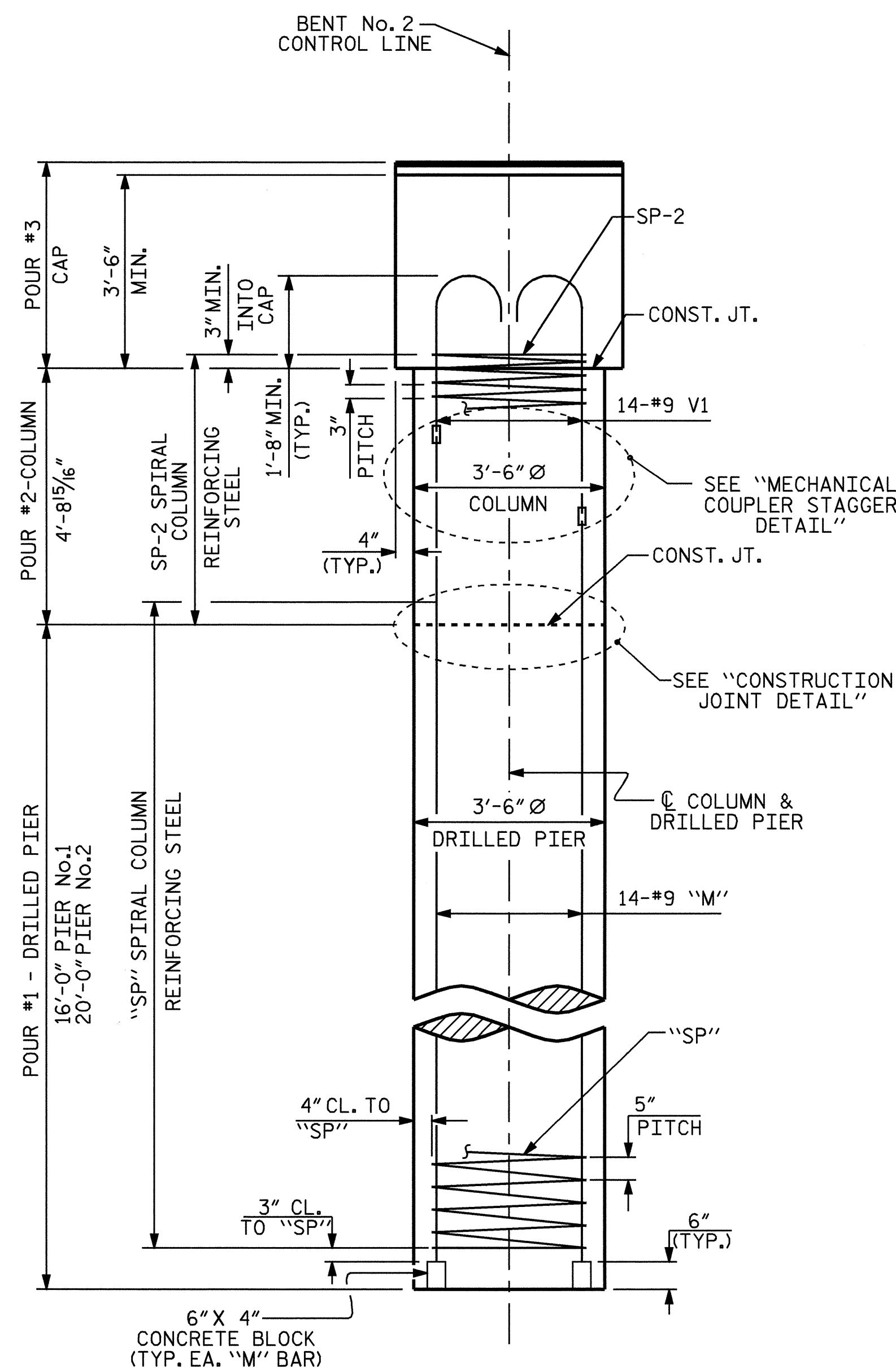
VIEW Y-Y



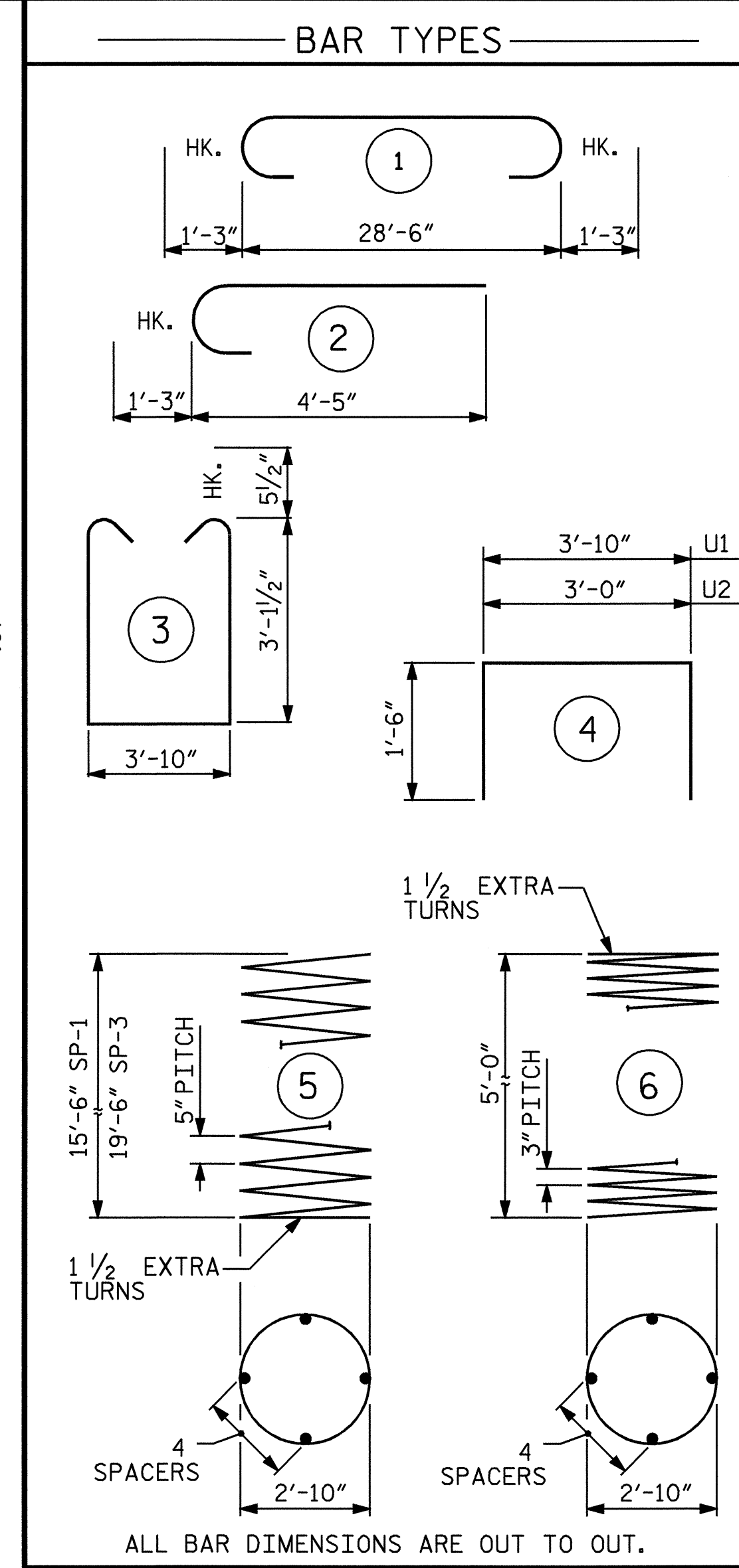
CONSTRUCTION JOINT DETAIL



MECHANICAL COUPLER STAGGER DETAIL



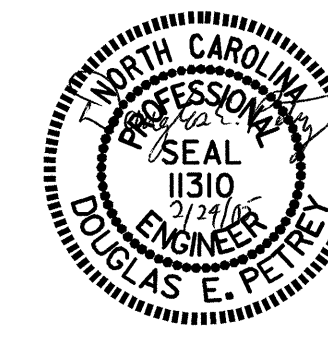
END ELEVATION



BILL OF MATERIAL					
BENT No. 2					
BAR NO.	SIZE	TYPE	LENGTH	WEIGHT	
B1	12	9	1	31'-0"	1265
B2	6	5	STR	28'-8"	179
S1	29	5	3	11'-0"	333
U1	30	4	4	6'-10"	137
U2	8	4	4	6'-0"	32
V1	28	9	2	5'-8"	539
M1	14	9	STR	22'-0"	1047
M2	14	9	STR	26'-0"	1238
REINFORCING STEEL				LBS.	4770
SP-1	1	*	5	341'-2"	356
SP-2	2	*	6	193'-1"	258
SP-3	1	*	5	428'-8"	447
SPIRAL COLUMN REINFORCING STEEL				LBS.	1061
* THE SP-2 SPIRAL REINFORCING STEEL SHALL BE W20 OR D-20 COLD DRAWN WIRE OR #4 PLAIN OR DEFORMED BAR.					
** THE SP-1 & SP-3 SPIRAL REINFORCING STEEL SHALL BE W31 OR D-31 COLD DRAWN WIRE OR #5 PLAIN OR DEFORMED BAR.					
CLASS A CONCRETE BREAKDOWN:					
POUR #2 (COLUMNS)				3.4	C. Y.
POUR #3 (CAP)				15.9	C. Y.
TOTAL				19.3	C. Y.
DRILLED PIER QUANTITIES					
DRILLED PIER CONCRETE:					
POUR #1 (DRILLED PIERS)				12.8	C. Y.
3'-6" Ø DRILLED PIERS NOT IN SOIL				15.0	LIN. FT.
3'-6" Ø DRILLED PIERS IN SOIL				21.0	LIN. FT.
PERMANENT STEEL CASING FOR 3'-6" Ø DRILLED PIER				16.0	LIN. FT.
CSL TUBES				164.0	LIN. FT.

DRAWN BY : A. V. ROYAL DATE : 12/04
 CHECKED BY : B. N. GRADY DATE : 1/05

24-FEB-2005 11:18
 W:\squadw\B3922\aroyal\Microstation\B-3922.sd_B*2_01.dgn
 achesson



PROJECT NO. B-3922
 WATAUGA COUNTY
 STATION: 11+06.50 -L-

SHEET 2 OF 2

STATE OF NORTH CAROLINA
 DEPARTMENT OF TRANSPORTATION
 RALEIGH

SUBSTRUCTURE
 BENT No. 2

REVISIONS						SHEET NO.
NO.	BY:	DATE:	NO.	BY:	DATE:	S-28
1			3			TOTAL SHEETS 41
2			4			