

PROJECT: 33356.1.1 ID: B-3922

CONTENTS: -L-

STATE OF NORTH CAROLINA
DEPARTMENT OF TRANSPORTATION
DIVISION OF HIGHWAYS
GEOTECHNICAL ENGINEERING UNIT
STRUCTURE
SUBSURFACE INVESTIGATION

Table with columns: STATE, STATE PROJECT REFERENCE NO., SHEET NO., TOTAL SHEETS, STATE PROJ. NO., F.A. PROJ. NO., DESCRIPTION. Values: N.C., B-3922, 1, 17, P.E., CONST.

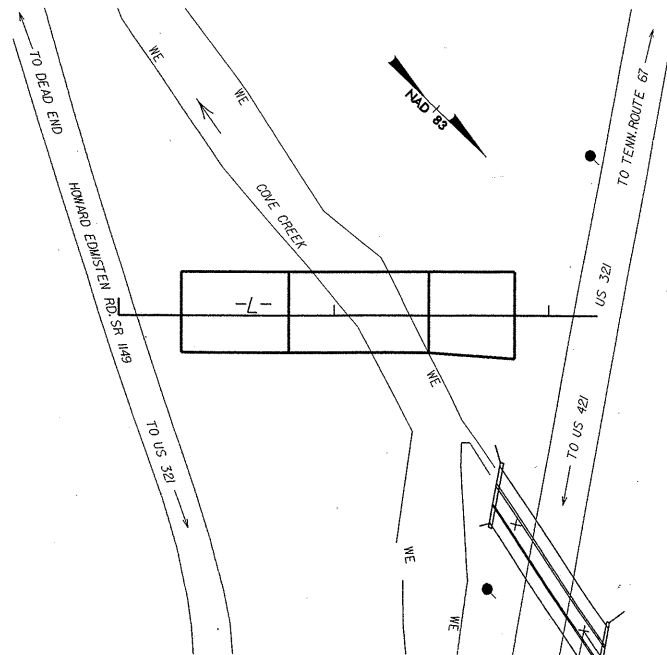
CAUTION NOTICE

THE SUBSURFACE INFORMATION AND THE SUBSURFACE INVESTIGATION ON WHICH IT IS BASED WAS MADE FOR THE PURPOSE OF STUDY, PLANNING AND DESIGN, AND NOT FOR CONSTRUCTION OR PAY PURPOSES.

GENERAL SOIL AND ROCK STRATA DESCRIPTIONS AND INDICATED BOUNDARIES ARE BASED ON A GEOTECHNICAL INTERPRETATION OF ALL AVAILABLE SUBSURFACE DATA AND MAY NOT NECESSARILY REFLECT THE ACTUAL SUBSURFACE CONDITIONS BETWEEN BORINGS OR BETWEEN SAMPLED STRATA WITHIN THE BOREHOLE.

THE BIDDER OR CONTRACTOR IS CAUTIONED THAT DETAILS SHOWN ON THE SUBSURFACE PLANS ARE PRELIMINARY ONLY AND IN MANY CASES THE FINAL DESIGN DETAILS ARE DIFFERENT. FOR BIDDING AND CONSTRUCTION PURPOSES, REFER TO THE CONSTRUCTION PLANS AND DOCUMENTS FOR FINAL DESIGN INFORMATION ON THIS PROJECT.

STATE PROJECT 33356.1.1 I.D. NO. B-3922
F.A. PROJECT
COUNTY WATAUGA
DESCRIPTION BRIDGE NO. 316 ON SR-1149 OVER COVE CREEK



INVESTIGATED BY L.L. ACKER PERSONNEL L.L. ACKER
CHECKED BY W.D. FRYE D.O. CHEEK
SUBMITTED BY W.D. FRYE C.J. COFFEY
DATE JUNE 2004 G.K. ROSE

DRAWN BY: PO LOCKAMY

NOTE - THE INFORMATION CONTAINED HEREIN IS NOT IMPLIED OR GUARANTEED BY THE N.C. DEPARTMENT OF TRANSPORTATION AS BEING ACCURATE NOR IS IT CONSIDERED TO BE PART OF THE PLANS, SPECIFICATIONS, OR CONTRACT FOR THE PROJECT.

NOTE - BY HAVING REQUESTED THIS INFORMATION THE CONTRACTOR SPECIFICALLY WAIVES ANY CLAIMS FOR INCREASED COMPENSATION OR EXTENSION OF TIME BASED ON DIFFERENCES BETWEEN THE CONDITIONS INDICATED HEREIN AND THE ACTUAL CONDITIONS AT THE PROJECT SITE.

Professional seal for Louis L. Acker, North Carolina Licensed Geologist, Seal 1007, with a signature over it.