

STATE OF NORTH CAROLINA  
DEPT. OF TRANSPORTATION  
DIVISION OF HIGHWAYS  
RALEIGH, N.C.

1-05

ENGLISH STANDARD DRAWING FOR  
**TEMPORARY SHOULDER CLOSURES**

SHEET 1 OF 1  
**1101D04**

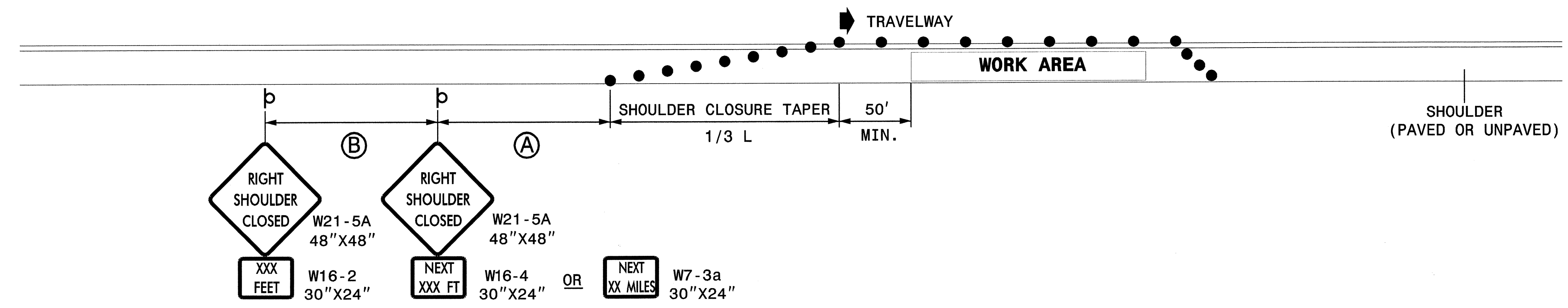
STATE OF NORTH CAROLINA  
DEPT. OF TRANSPORTATION  
DIVISION OF HIGHWAYS  
RALEIGH, N.C.

1-05

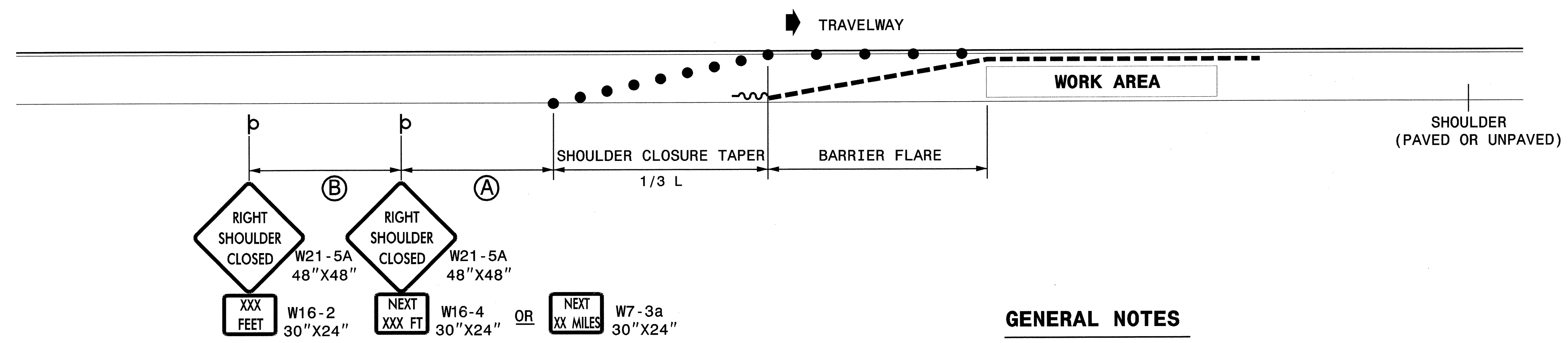
ENGLISH STANDARD DRAWING FOR  
**TEMPORARY SHOULDER CLOSURES**

SHEET 1 OF 1  
**1101D04**

**SHOULDER CLOSURES UTILIZING DRUMS**



**SHOULDER CLOSURES UTILIZING TEMPORARY BARRIER**



**GENERAL NOTES**

- PLACE SHOULDER CLOSURE SIGNS ON THE SAME SIDE AS THE SHOULDER THAT IS CLOSED.
- PLACE DRUMS IN THE SHOULDER TAPER AT THE MAXIMUM SPACING EQUAL IN FEET TO THE POSTED SPEED LIMIT. THE MAXIMUM SPACING OF DRUMS ALONG THE WORK AREA AND BARRIER FLARE IS EQUAL IN FEET TO 2 TIMES THE POSTED SPEED LIMIT.
- FLARE THE APPROACH END OF PORTABLE CONCRETE BARRIER BEYOND THE SHOULDER AND USE A CRASH CUSHION FOR PROTECTION IF THE EXPOSED END OF THE BARRIER IS WITHIN THE "CLEAR ZONE".
- USE STATIONARY SIGNS FOR LONG TERM OPERATIONS (LONGER THAN 3 DAYS).
- REFER TO STD. 1101.11 SHEETS 1, 3, & 4, FOR "L" DISTANCE, BARRIER FLARE RATES, AND SIGN SPACING.

**LEGEND**

- ~ TEMPORARY CRASH CUSHION
- - - PORTABLE CONCRETE BARRIER
- DRUM
- b STATIONARY OR PORTABLE SIGN
- ➔ DIRECTION OF TRAFFIC FLOW

11/22/2004  
C:\Program Files\Control\Top\ASIGNED AND SEALED\TCP08.dgn  
C:\Program Files\Control\Top\ASIGNED AND SEALED\TCP08.dgn

	<b>REPLACEMENT DETAIL FOR RSD 1101.04</b>														
	<table border="1"> <tr> <td>SCALE:</td> <td>NONE</td> </tr> <tr> <td>DATE:</td> <td>11/04</td> </tr> <tr> <td>DWG. BY:</td> <td>MMM</td> </tr> <tr> <td>DESIGN BY:</td> <td>MMM</td> </tr> <tr> <td>REVIEWED BY:</td> <td>MMM</td> </tr> </table>	SCALE:	NONE	DATE:	11/04	DWG. BY:	MMM	DESIGN BY:	MMM	REVIEWED BY:	MMM	<table border="1"> <tr> <td>REVISIONS</td> </tr> <tr> <td> </td> </tr> <tr> <td> </td> </tr> <tr> <td> </td> </tr> </table>	REVISIONS		
SCALE:	NONE														
DATE:	11/04														
DWG. BY:	MMM														
DESIGN BY:	MMM														
REVIEWED BY:	MMM														
REVISIONS															
		CADD FILE: tcp08.dgn													