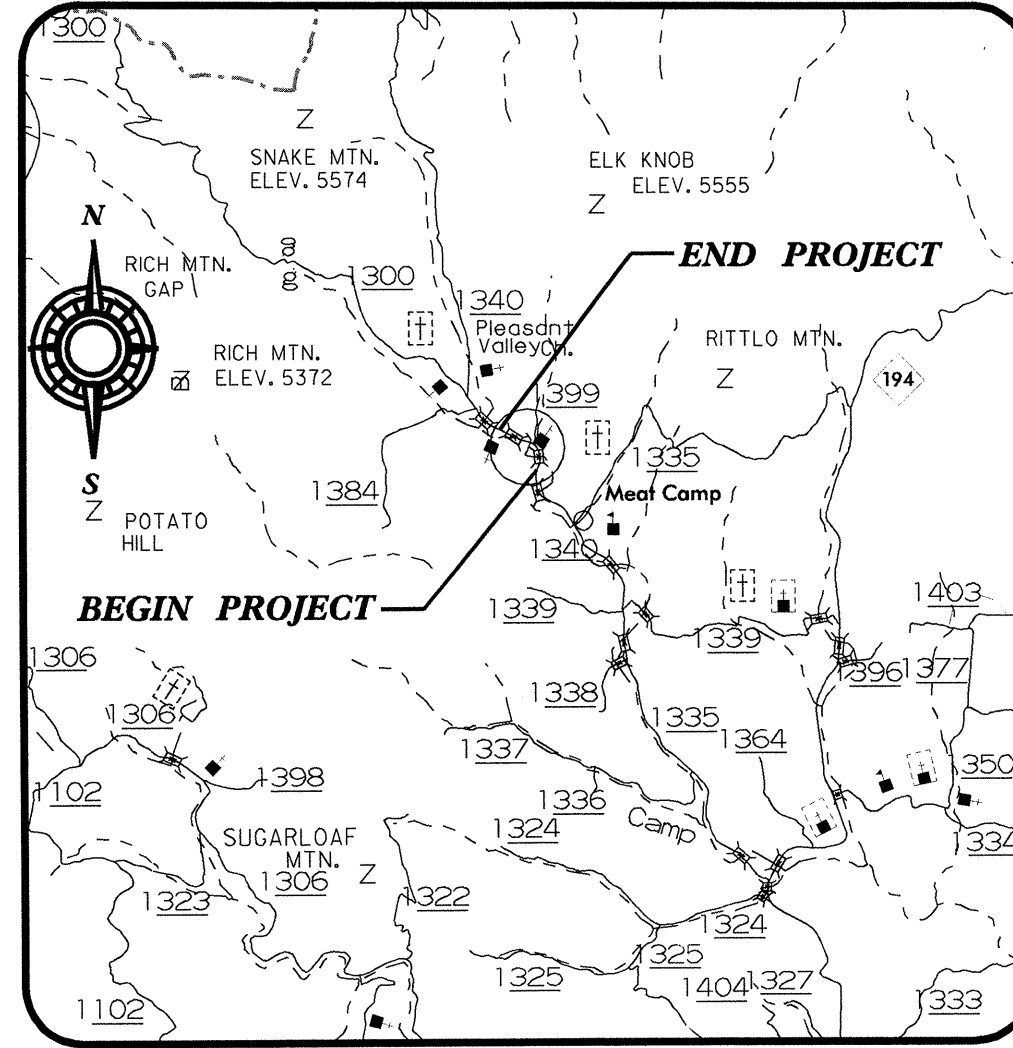


CONTRACT: C201168 PROJECT: B-3926

See Sheet 1-A For Index of Sheets
See Sheet 1-B For Conventional Symbols



VICINITY MAP

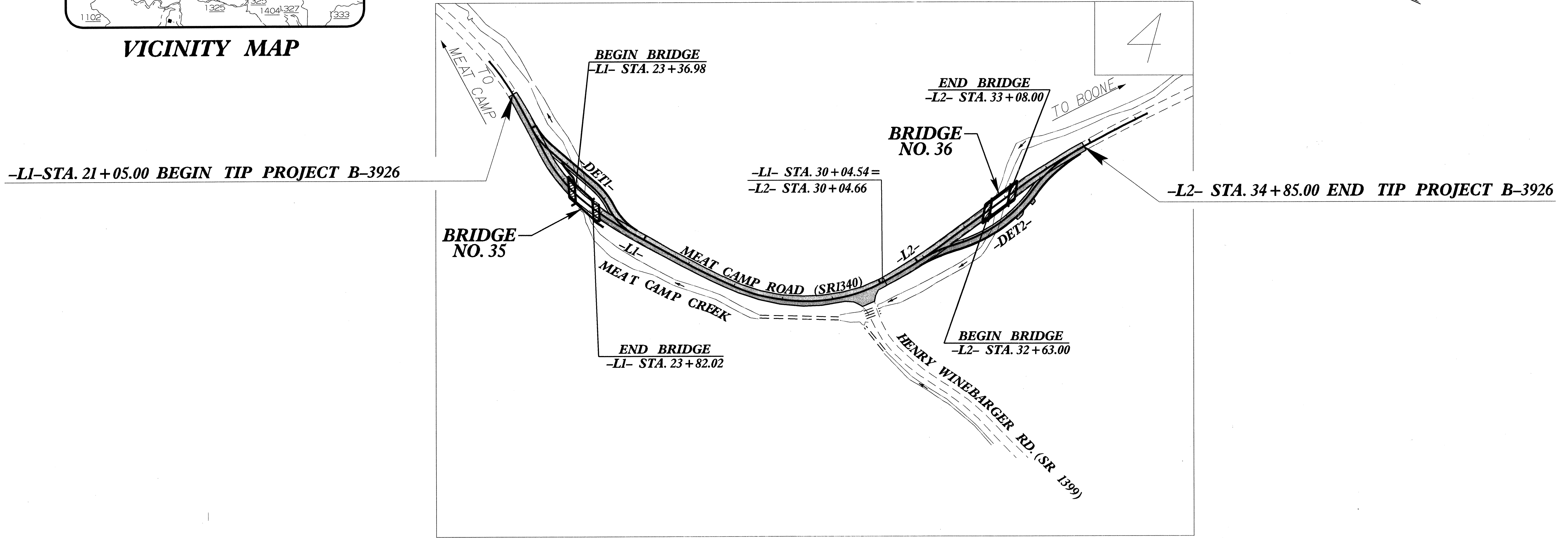
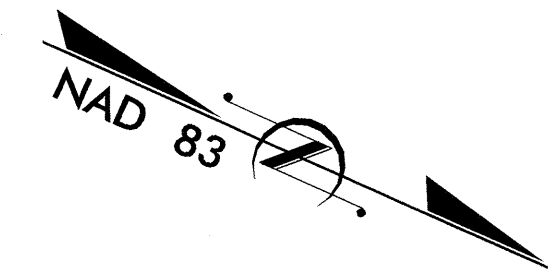
STATE OF NORTH CAROLINA
DIVISION OF HIGHWAYS

WATAUGA COUNTY

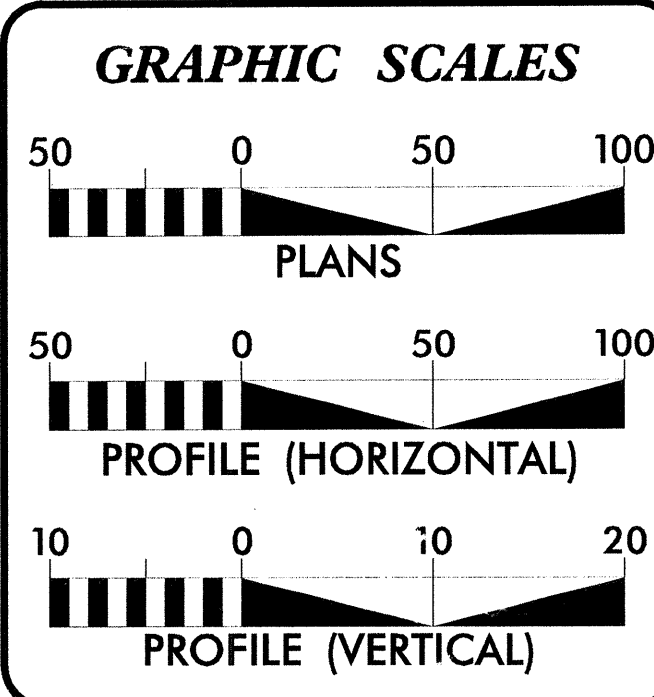
LOCATION: Replace Bridges No. 35 & No. 36 & approaches on SR 1340, Meat Camp Road, over Meat Camp Creek

TYPE OF WORK: GRADING, DRAINAGE, STRUCTURES & PAVING

STATE	STATE PROJECT REFERENCE NO.	SHEET NO.	TOTAL SHEETS
N.C.	B-3926	1	
STATE PROJ. NO.	F.A. PROJ. NO.	DESCRIPTION	
33360.1.1	BRZ-1340 (4)	PE,UTL	
33360.2.1	BRZ-1340 (7)	R/W	
33360.3.1	BRZ-1340 (8)	CONSTR.	



DESIGN EXCEPTION REQUIRED FOR THE HORIZONTAL ALIGNMENT



DESIGN DATA

ADT 2005 = 980
ADT 2025 = 1,400
DHV = 15 %
D = 60 %
* T = 3 %
V = 30 MPH
* (1 % TTST & 2% DUAL)

PROJECT LENGTH

Length Roadway TIP Project B-3926.....	0.244 mi.
Length Structure TIP Project B-3926.....	0.017 mi.
Total Length of TIP Project B-3926	0.261 mi.

PLANS PREPARED BY :
RUMMEL, KLEPPER & KAHL, LLP
consulting engineers
5800 FARINGDON PLACE, SUITE 105
RALEIGH, NORTH CAROLINA 27609
(919)-878-9560
FOR

DIVISION OF HIGHWAYS

2002 STANDARD SPECIFICATIONS
RIGHT OF WAY DATE: July 31, 2003
LETTING DATE: APRIL 19, 2005
NCDOT CONTACT: Project Engineer-Roadway Design Unit

B. Keith Skinner, P.E.
PROJECT ENGINEER

Michael T. Merritt, P.E.
PROJECT DESIGN ENGINEER

Teresa M. Bruton, P.E.
Project Engineer-Roadway Design Unit

HYDRAULICS ENGINEER

SIGNATURE: [Signature] P.E.

ROADWAY DESIGN ENGINEER

SIGNATURE: [Signature] P.E.

DIVISION OF HIGHWAYS
STATE OF NORTH CAROLINA

[Signature] P.E.
STATE DESIGN ENGINEER

DEPARTMENT OF TRANSPORTATION
FEDERAL HIGHWAY ADMINISTRATION

APPROVED
DIVISION ADMINISTRATOR

DATE