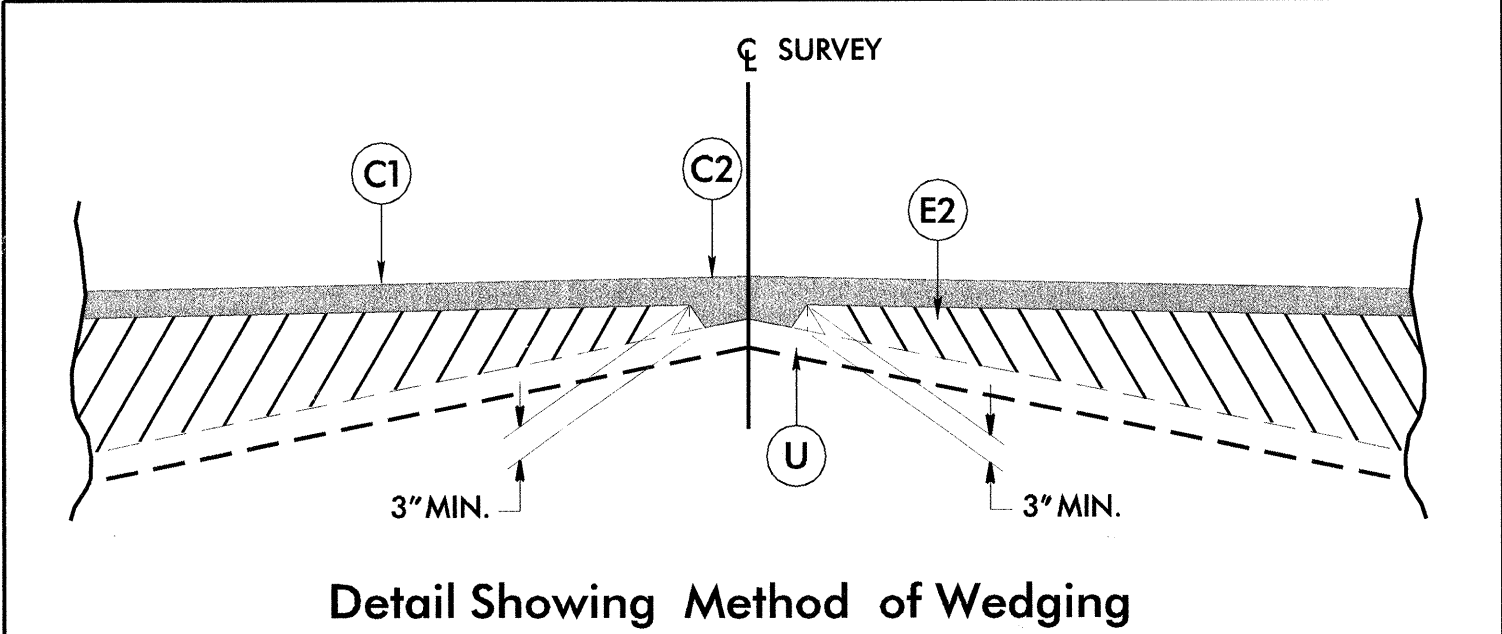
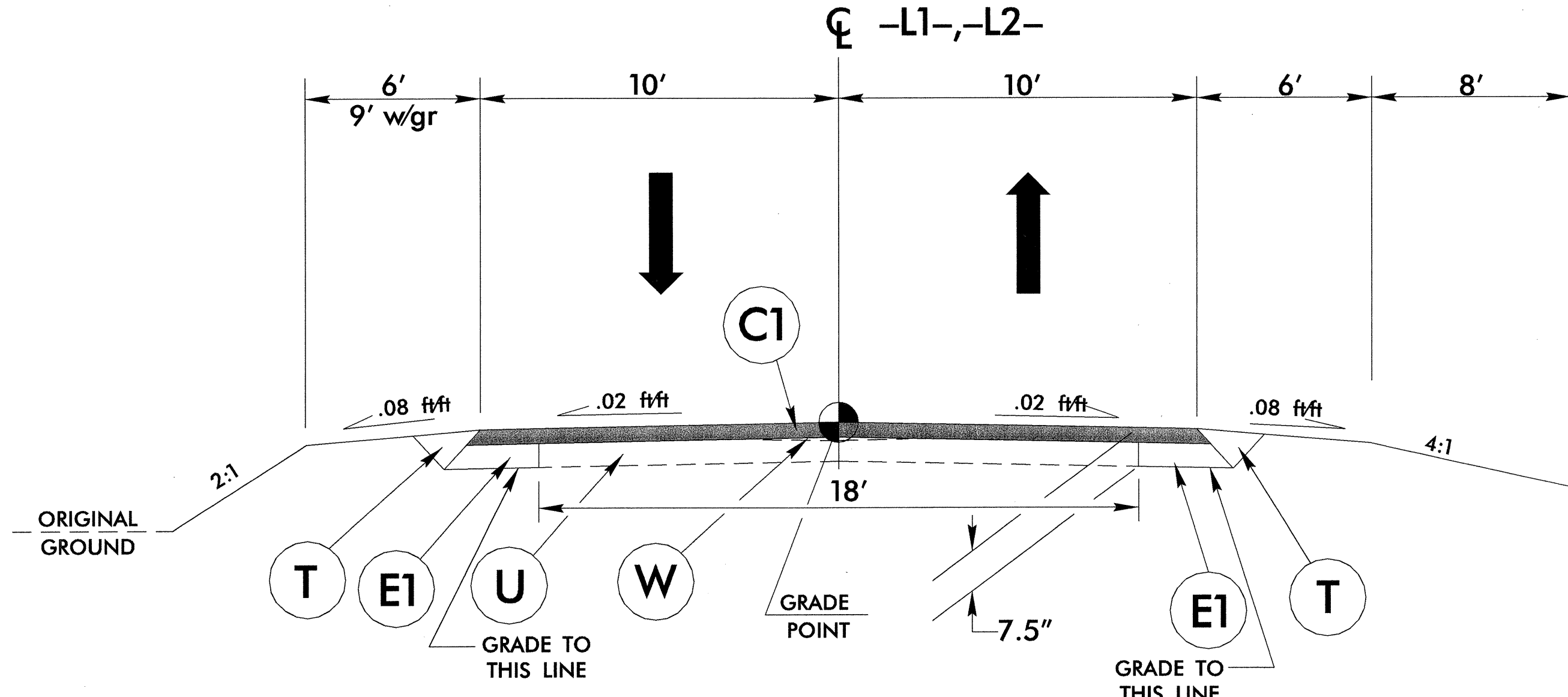


PAVEMENT SCHEDULE			
ITEM	DESCRIPTION	ITEM	DESCRIPTION
C1	PROP. APPROX. 2 1/2" ASPHALT CONCRETE SURFACE COURSE, TYPE S9.5A, AT AN AVERAGE RATE OF 140 LBS. PER SQ. YD. IN EACH OF TWO LAYERS	R	EXPRESSWAY GUTTER
C2	PROP. VAR. DEPTH ASPHALT CONCRETE SURFACE COURSE, TYPE S9.5A, AT AN AVERAGE RATE OF 112 LBS. PER SQ. YD. PER 1" DEPTH, TO BE PLACED IN LAYERS NOT TO EXCEED 1.5" IN DEPTH.	T	EARTH MATERIAL
E1	PROP. APPROX. 5" ASPHALT CONCRETE BASE COURSE, TYPE B25.0B, AT AN AVERAGE RATE OF 570 LBS. PER SQ. YD.	U	EXISTING PAVEMENT
E2	PROP. VAR. DEPTH ASPHALT CONCRETE BASE COURSE, TYPE B25.0B, AT AN AVERAGE RATE OF 114 LBS. PER SQ. YD. PER 1" DEPTH, TO BE PLACED IN LAYERS NOT GREATER THAN 5.5" IN DEPTH OR LESS THAN 3" IN DEPTH.	W	WEDGING
J1	PROP. 8" AGGREGATE BASE COURSE		

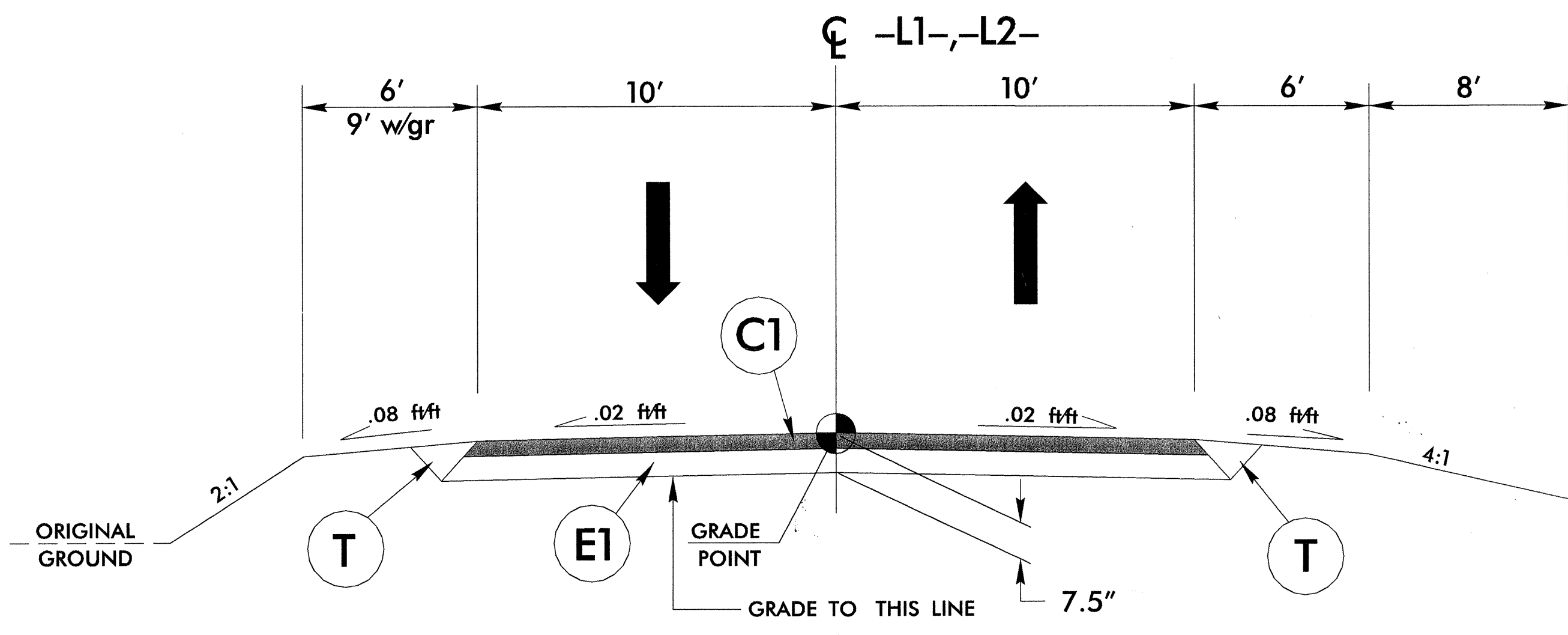
NOTE: ALL PAVEMENT EDGE SLOPES ARE 1:1



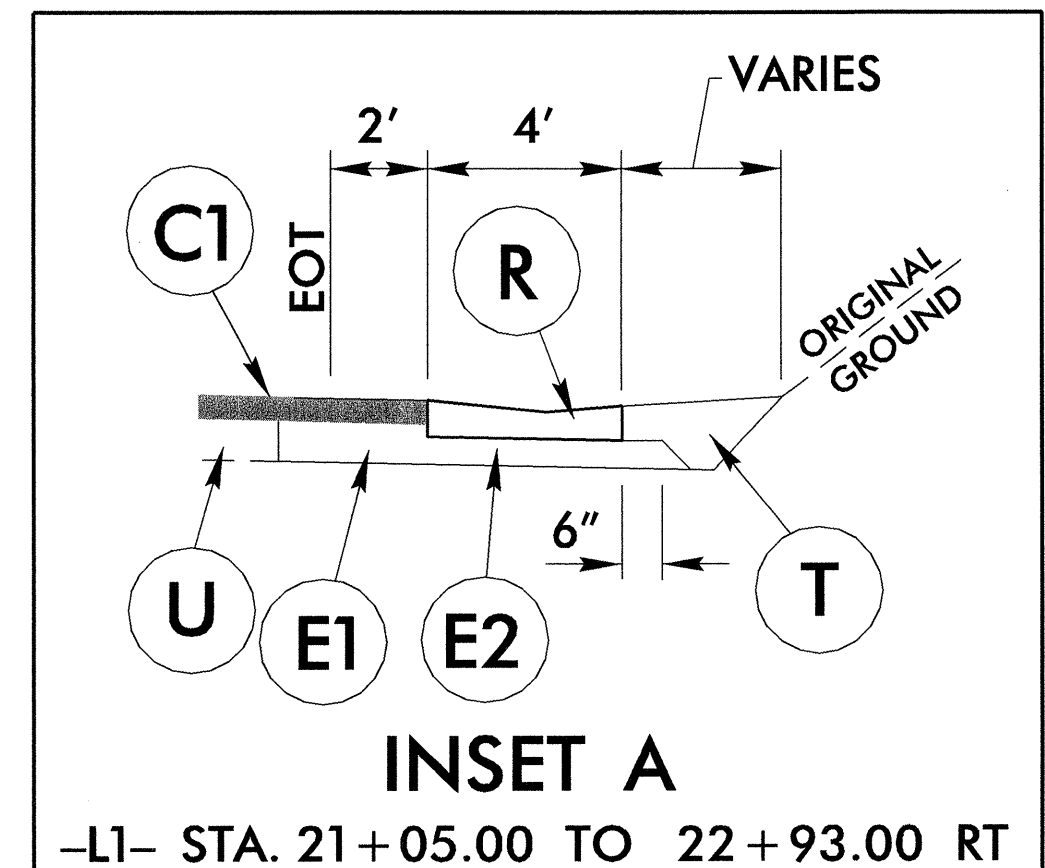
NOTE: 2.5in OVERLAY FROM -L1- STA. 25+55.00 TO STA. 30+04.54, -L2- STA. 30+04.66 TO STA. 30+10.00, AND -L2- 34+00.00 STA. 34+85.00



ROADWAY TYPICAL SECTION No. 1

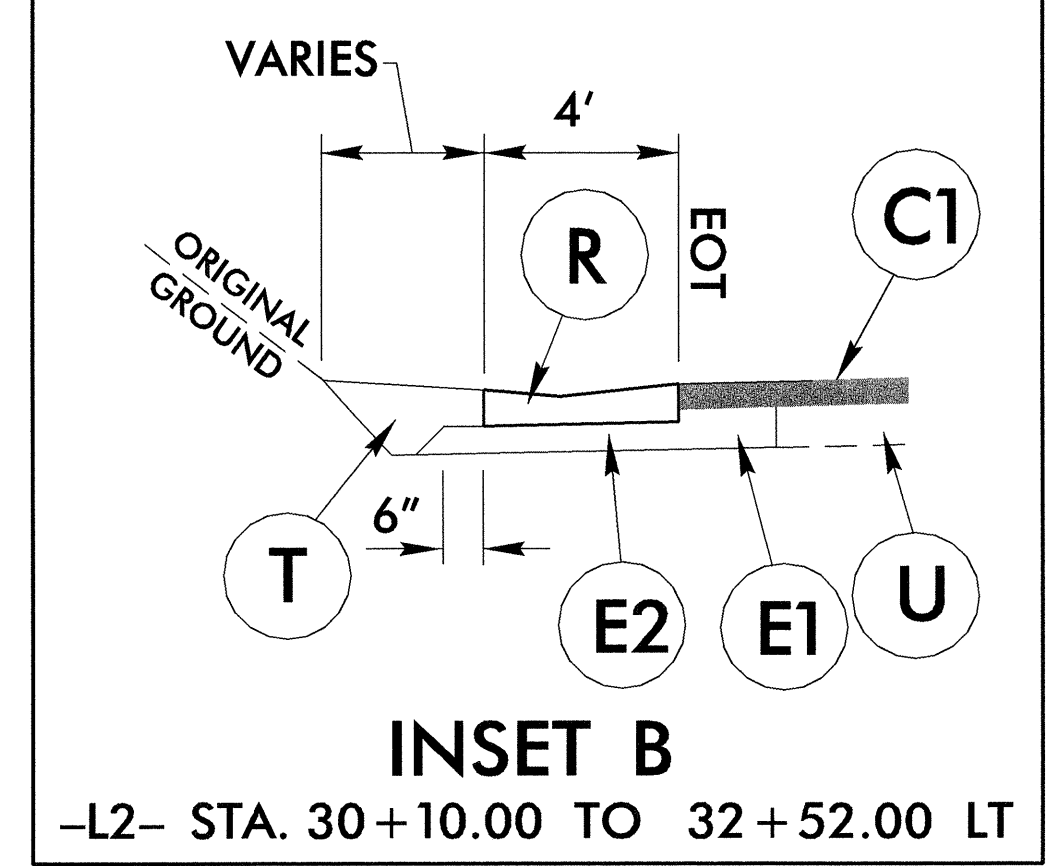


ROADWAY TYPICAL SECTION No. 2



INSET A

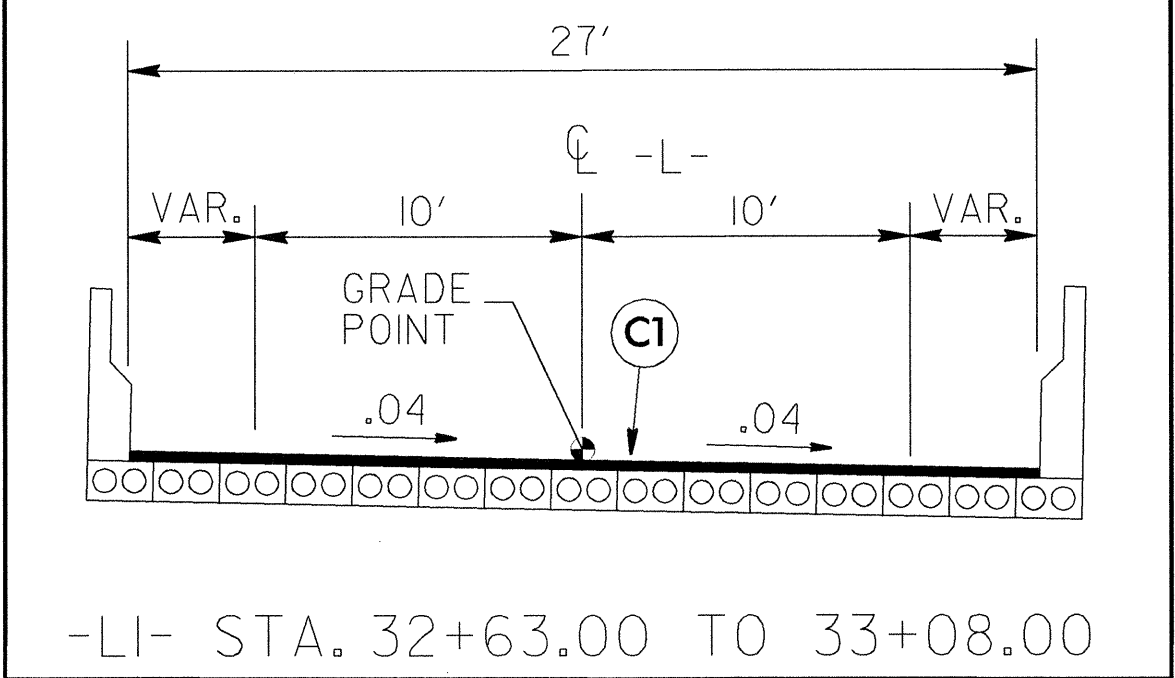
-L1- STA. 21+05.00 TO 22+93.00 RT



INSET B

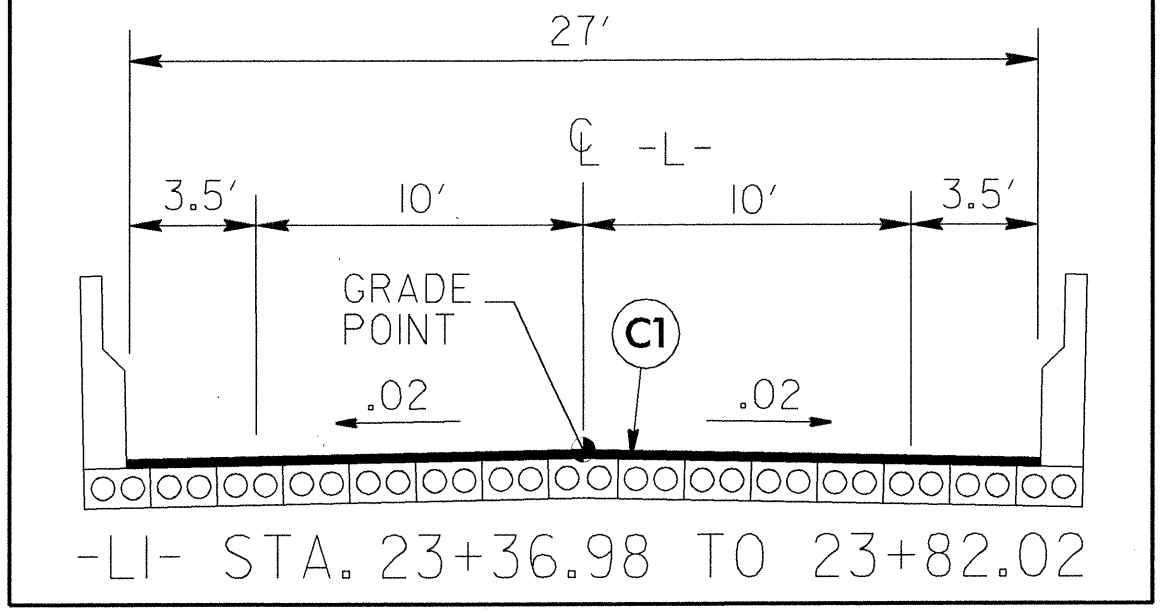
-L2- STA. 30+10.00 TO 32+52.00 LT

DETAIL OF PAVING ACROSS CORED SLAB BRIDGE



-L1- STA. 32+63.00 TO 33+08.00

DETAIL OF PAVING ACROSS CORED SLAB BRIDGE



-L1- STA. 23+36.98 TO 23+82.02

TRANSITION FROM EXISTING TO TYPICAL SECTION No. 1  
-L1- STA. 21+05.00 TO 21+55.00  
-L2- STA. 30+10.00 TO 30+60.00

USE TYPICAL SECTION No. 1  
-L1- STA. 21+55.00 TO 22+50.00  
-L1- STA. 24+50.00 TO 25+05.00  
-L2- STA. 30+60.00 TO 32+00.00

TRANSITION FROM TYPICAL SECTION No. 1 TO EXISTING  
-L1- STA. 25+05.00 TO 25+55.00

USE TYPICAL SECTION No. 2  
-L1- STA. 22+50.00 TO 23+36.98 (Begin Bridge)  
-L1- STA. 23+82.02 (End Bridge) TO 24+50.00  
-L2- STA. 32+00.00 TO 32+63.00 (Begin Bridge)  
-L2- STA. 33+08.00 (End Bridge) TO 33+50.00

TRANSITION FROM TYPICAL SECTION No. 2 TO EXISTING  
-L2- STA. 33+50.00 TO 34+00.00

PLANS PREPARED BY :

**RK & K**  
**RUMMEL • KLEPPER & KAHL, LLP**  
consulting engineers  
5800 FARINGDON PLACE SUITE 105  
RALEIGH, NORTH CAROLINA • 27609-3960  
(919)-878-9560

FOR  
**DIVISION OF HIGHWAYS**

6/2/04  
I:\29\04\1515418\163926-rdy-typ.dgn