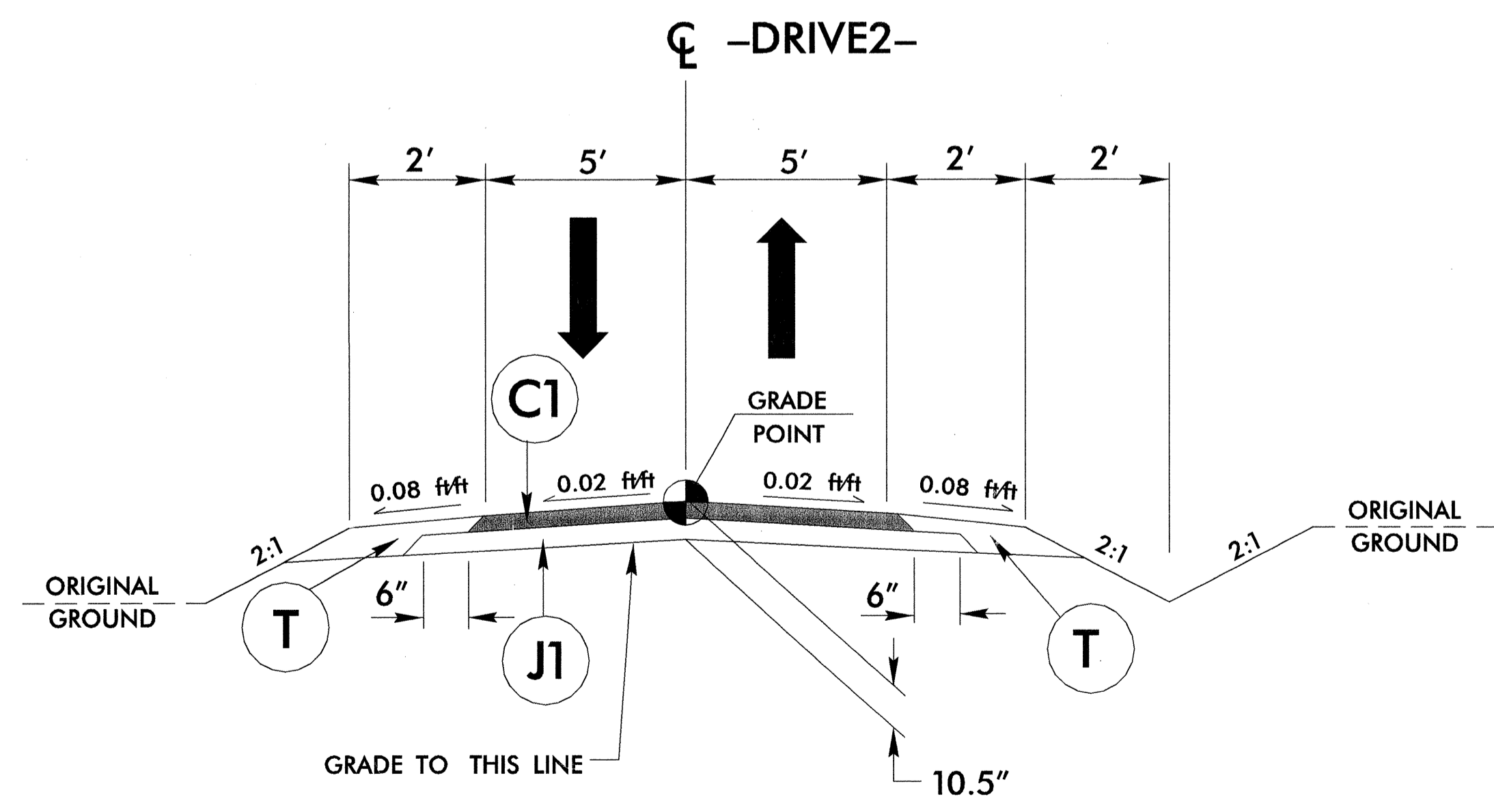
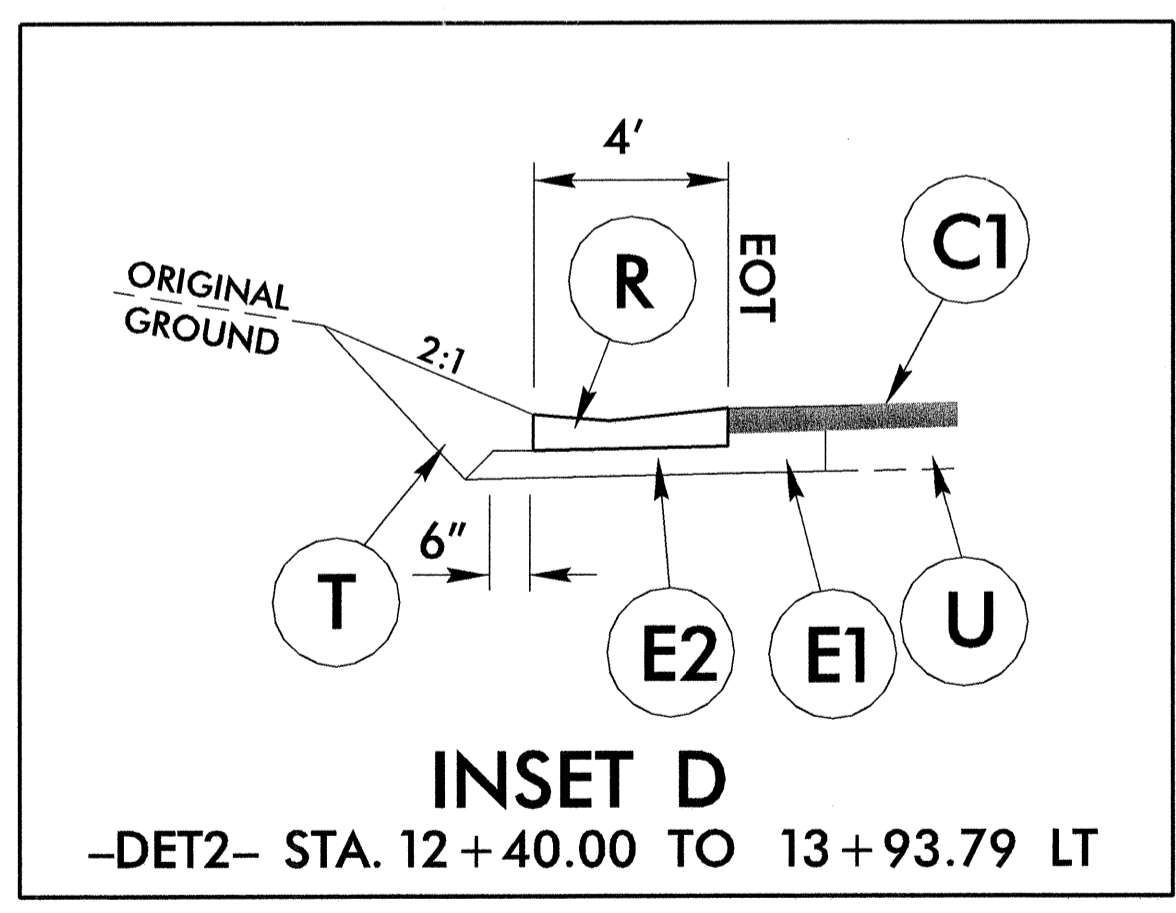


TRANSITION FROM EXISTING TO TYPICAL SECTION No.3  
 FROM -DET1- STA. 10+00.00 TO -DET1 STA. 10+51.07  
 FROM -DET2- STA. 10+00.00 TO -DET2- STA. 10+59.99

USE TYPICAL SECTION No. 3  
 -DET1- STA. 10+51.07 TO 12+45.68  
 -DET2- STA. 10+59.99 TO 13+12.63

TRANSITION FROM TYPICAL SECTION No.3 TO EXISTING  
 FROM -DET1- STA. 12+45.68 TO -DET1 STA. 12+95.83  
 FROM -DET2- STA. 13+12.63 TO -DET2- STA. 13+93.79



USE TYPICAL SECTION No. 4  
 -DRIVE2- STA. 10+13.00 TO 10+71.00

C1	2 1/2" S9.5A
E1	5" B25.0B
E2	VAR. B25.0B
J1	8" ABC
R	EXPRESSWAY GUTTER
T	EARTH MATERIAL
U	EXISTING PAVEMENT

**PLANS PREPARED BY :**

**RUMMEL • KLEPPER & KAHL, LLP**  
*consulting engineers*  
 5800 FARINGDON PLACE SUITE 105  
 RALEIGH, NORTH CAROLINA • 27609-3960  
 (919)-878-9560

**FOR**  
**DIVISION OF HIGHWAYS**

I:\2010\155448  
 11-20-10\dwg\proj\153926\_rdy\_tup.dgn  
 6/2/09