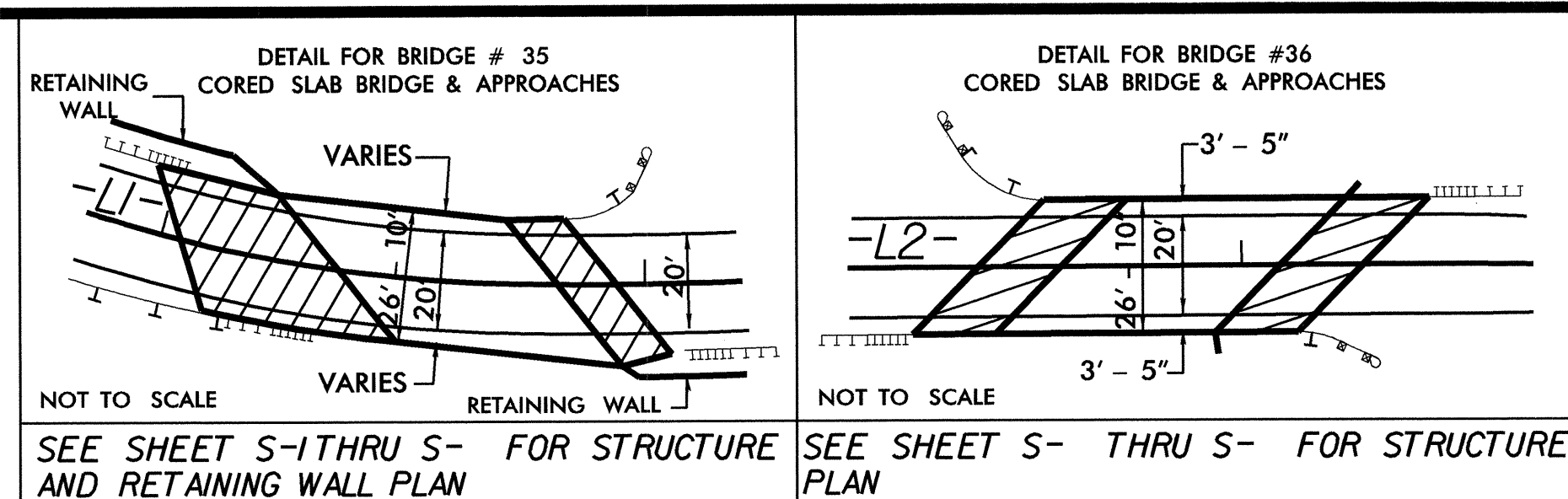
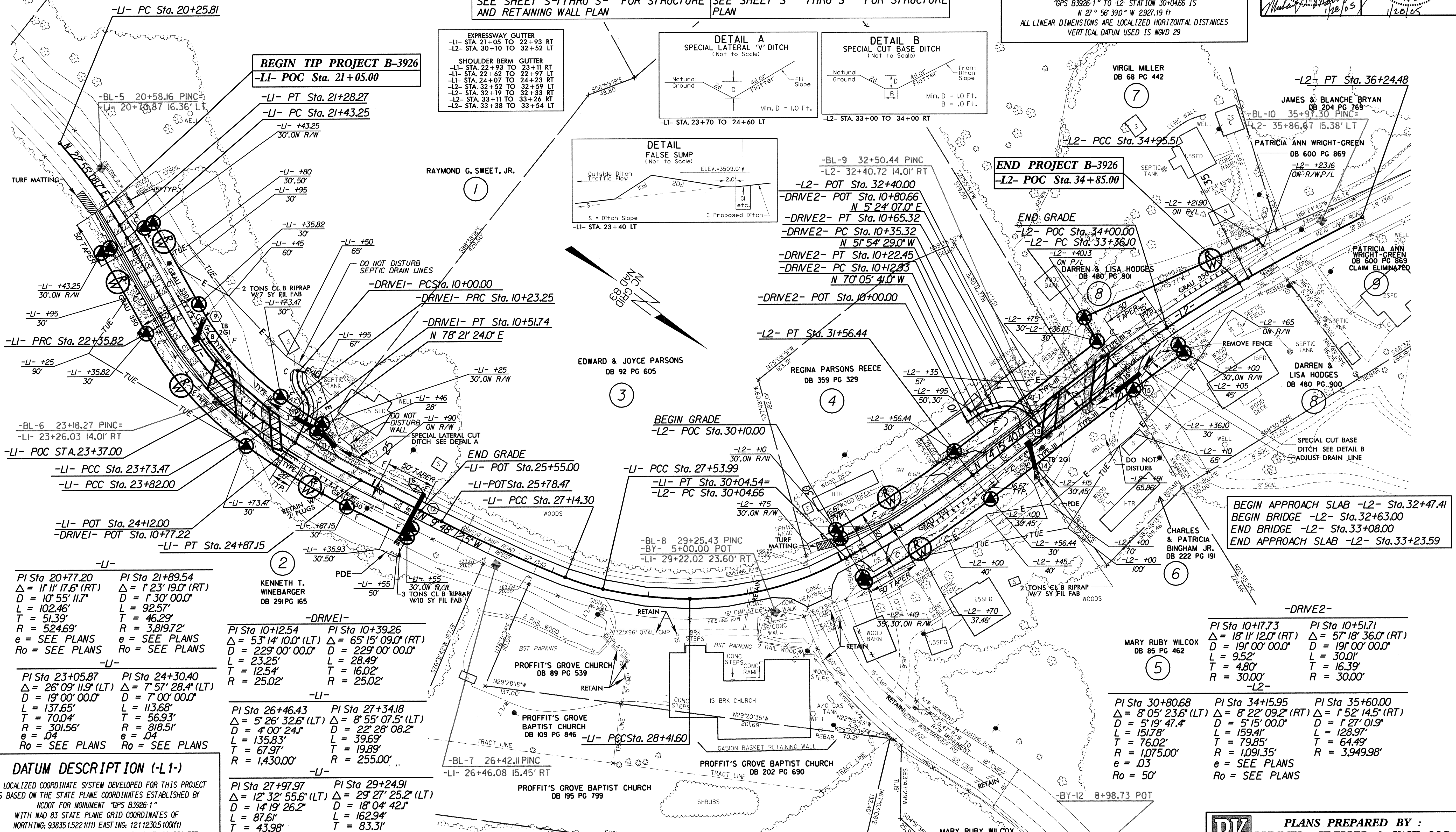


DATUM DESCRIPTION (-L2-)
 THE LOCALIZED COORDINATE SYSTEM DEVELOPED FOR THIS PROJECT IS BASED ON THE STATE PLANE COORDINATES ESTABLISHED BY NCDOT FOR MONUMENT "GPS B3926-1" WITH NAD 83 STATE PLANE GRID COORDINATES OF NORTHING: 9383515221(11) EASTING: 12112305100(11) THE AVERAGE COMBINED GRID FACTOR USED ON THIS PROJECT (GROUND TO GRID) IS: 0.99988164 THE N.C. LAMBERT GRID BEARING AND LOCALIZED HORIZONTAL GROUND DISTANCE FROM "GPS B3926-1" TO -L2- STATION 30+04.66 IS N 27° 56' 39.0" W 2,927.19 FT ALL LINEAR DIMENSIONS ARE LOCALIZED HORIZONTAL DISTANCES VERTICAL DATUM USED IS NGVD 29



BEGIN APPROACH SLAB -L1- Sta.23+03.97
 BEGIN BRIDGE -L1- Sta.23+36.98
 END BRIDGE -L1- Sta.23+82.02
 END APPROACH SLAB -L1- Sta.23+94.15



PI Sta 20+77.20 PI Sta 21+89.54
 $\Delta = 11' 11" 17.6'$ (RT) $\Delta = 1' 23' 19.0'$ (RT)
 $D = 10' 55' 11.7"$ $D = 1' 30' 00.0"$
 $L = 102.46'$ $L = 92.57'$
 $T = 51.39'$ $T = 46.29'$
 $R = 524.69'$ $R = 3,819.72'$
 $e = \text{SEE PLANS}$ $e = \text{SEE PLANS}$
 $Ro = \text{SEE PLANS}$ $Ro = \text{SEE PLANS}$

PI Sta 23+05.87 PI Sta 24+30.40
 $\Delta = 26' 09' 11.9'$ (LT) $\Delta = 7' 57' 28.4'$ (LT)
 $D = 19' 00' 00.0"$ $D = 7' 00' 00.0"$
 $L = 137.65'$ $L = 113.68'$
 $T = 70.04'$ $T = 56.93'$
 $R = 301.56'$ $R = 818.51'$
 $e = .04$ $e = .04$
 $Ro = \text{SEE PLANS}$ $Ro = \text{SEE PLANS}$

PI Sta 10+12.54 PI Sta 10+39.26
 $\Delta = 53' 14' 10.0'$ (LT) $\Delta = 65' 15' 09.0'$ (RT)
 $D = 229' 00' 00.0"$ $D = 229' 00' 00.0"$
 $L = 23.25'$ $L = 28.49'$
 $T = 12.54'$ $T = 16.02'$
 $R = 25.02'$ $R = 25.02'$

PI Sta 26+46.43 PI Sta 27+34.18
 $\Delta = 5' 26' 32.6'$ (LT) $\Delta = 8' 55' 07.5'$ (LT)
 $D = 4' 00' 24.1"$ $D = 22' 28' 08.2"$
 $L = 135.83'$ $L = 39.69'$
 $T = 67.97'$ $T = 19.89'$
 $R = 1,430.00'$ $R = 255.00'$

PI Sta 27+97.97 PI Sta 29+24.91
 $\Delta = 12' 32' 55.6'$ (LT) $\Delta = 29' 27' 25.2'$ (LT)
 $D = 14' 19' 26.2"$ $D = 18' 04' 42.1"$
 $L = 87.61'$ $L = 162.94'$
 $T = 43.98'$ $T = 83.31'$
 $R = 400.00'$ $R = 316.93'$

BEGIN APPROACH SLAB -L2- Sta.32+47.41
 BEGIN BRIDGE -L2- Sta.32+63.00
 END BRIDGE -L2- Sta.33+08.00
 END APPROACH SLAB -L2- Sta.33+23.59

PI Sta 10+17.73 PI Sta 10+51.71
 $\Delta = 18' 11' 12.0'$ (RT) $\Delta = 57' 18' 36.0'$ (RT)
 $D = 19' 00' 00.0"$ $D = 19' 00' 00.0"$
 $L = 9.52'$ $L = 30.01'$
 $T = 4.80'$ $T = 16.39'$
 $R = 30.00'$ $R = 30.00'$

PI Sta 30+80.68 PI Sta 34+15.95 PI Sta 35+60.00
 $\Delta = 8' 05' 23.6'$ (LT) $\Delta = 8' 22' 09.2'$ (RT) $\Delta = 1' 52' 14.5'$ (RT)
 $D = 5' 19' 47.4"$ $D = 5' 15' 00.0"$ $D = 1' 27' 01.9"$
 $L = 151.78'$ $L = 159.41'$ $L = 128.97'$
 $T = 76.02'$ $T = 79.85'$ $T = 64.49'$
 $R = 1,075.00'$ $R = 1,091.35'$ $R = 3,949.98'$
 $e = .03$ $e = \text{SEE PLANS}$
 $Ro = 50'$ $Ro = \text{SEE PLANS}$

DATUM DESCRIPTION (-L1-)
 THE LOCALIZED COORDINATE SYSTEM DEVELOPED FOR THIS PROJECT IS BASED ON THE STATE PLANE COORDINATES ESTABLISHED BY NCDOT FOR MONUMENT "GPS B3926-1" WITH NAD 83 STATE PLANE GRID COORDINATES OF NORTHING: 9383515221(11) EASTING: 12112305100(11) THE AVERAGE COMBINED GRID FACTOR USED ON THIS PROJECT (GROUND TO GRID) IS: 0.99988164 THE N.C. LAMBERT GRID BEARING AND LOCALIZED HORIZONTAL GROUND DISTANCE FROM "GPS B3926-1" TO -L1- STATION 20+25.81 IS N 35° 48' 22.0" W 2,104.90 FT ALL LINEAR DIMENSIONS ARE LOCALIZED HORIZONTAL DISTANCES VERTICAL DATUM USED IS NGVD 29

NOTE: SEE SHEET 2_ FOR DETAIL OF TEMPORARY FABRIC WALL
 SEE SHEET 5 FOR -L1- & -L2- PROFILES
 SEE SHEET 6 FOR -DRIVE1- & -DRIVE2- PROFILES.

NOTE: 2.5in OVERLAY FROM -L1- STA.25+55.00 TO -L1- STA. 30+04.54, -L2- STA.30+04.66 TO -L2- STA.30+10.00, AND -L2- STA.34+00.00 TO -L2- STA.34+85.00 ALL DRIVEWAY RADII ARE 5' UNLESS OTHERWISE SPECIFIED

PLANS PREPARED BY :
RUMMEL KLEPPER & KAHL, LLP
consulting engineers
 5800 FARRINGTON PLACE SUITE 105
 RALEIGH, NORTH CAROLINA 27609-3960
 (919)-878-9560
 FOR
STATE OF NORTH CAROLINA
DIVISION OF HIGHWAYS