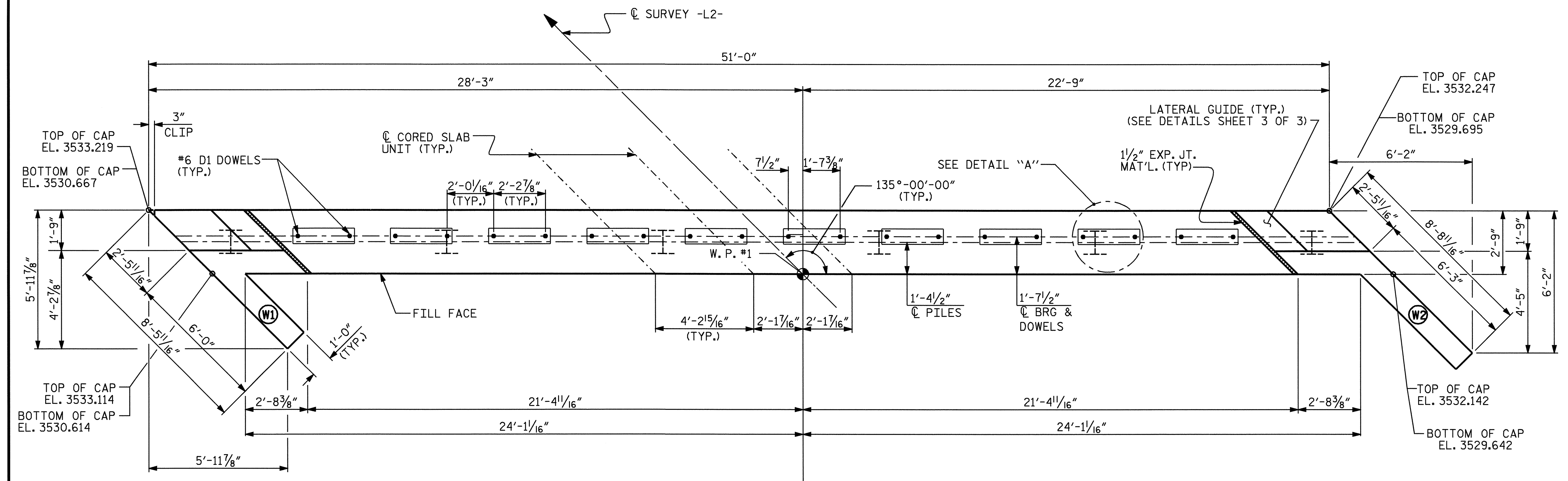
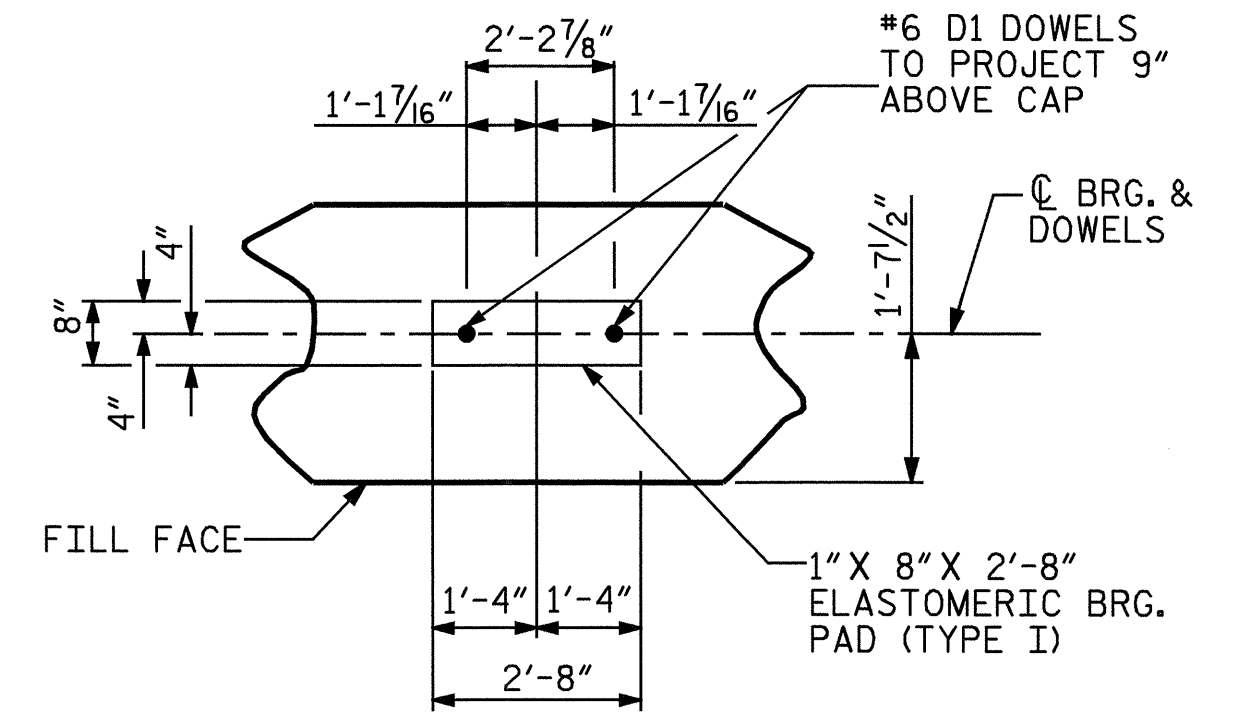


NOTES:

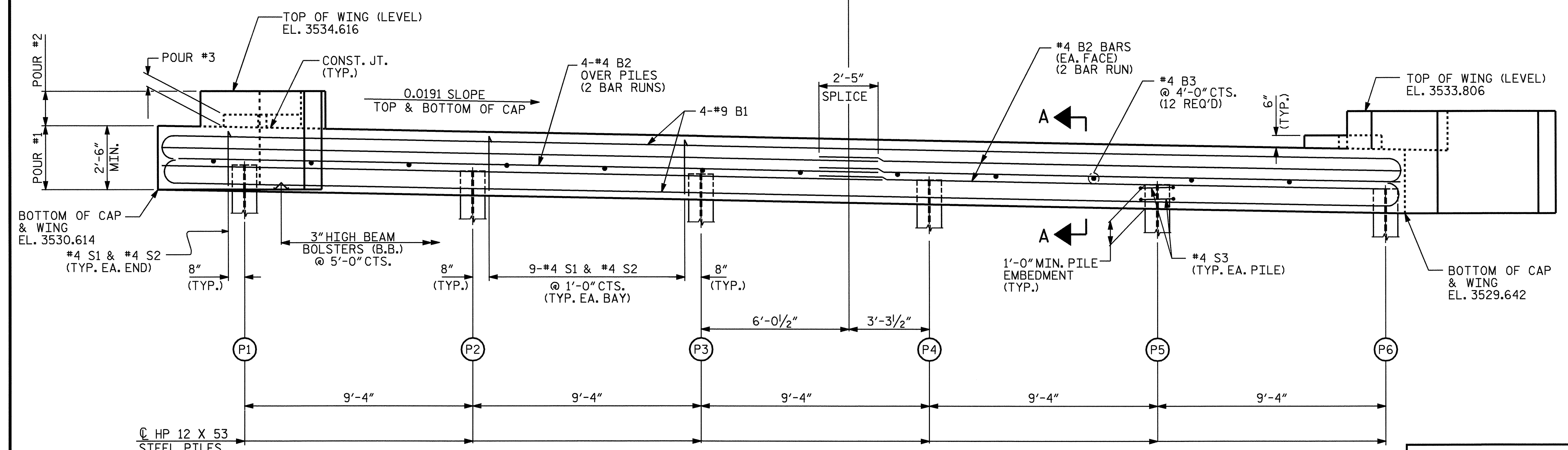
- STIRRUPS IN CAP MAY BE SHIFTED AS NECESSARY TO CLEAR DOWELS.
- THE CONTRACTOR SHALL PROVIDE FOR INSTALLATION OF THE 4" DIAMETER DRAIN PIPE THROUGH THE WING WALL AS REQUIRED FOR REINFORCED BRIDGE APPROACH FILLS, SEE THE ROADWAY PLANS. REINFORCING STEEL IN THE WING WALL MAY BE SHIFTED AS NECESSARY TO CLEAR THE DRAIN PIPE.
- THE LATERAL GUIDES ARE NOT TO BE POURED UNTIL AFTER THE CORED SLAB UNITS ARE IN PLACE.
- THE TOP SURFACE OF THE END BENT CAP IS SLOPED LONGITUDINALLY ALONG C CORED SLAB UNIT TO MATCH GRADE.
- FOR SECTION A-A, SEE SHEET 3 OF 3.



PLAN



DETAIL "A"  
(TYP. EA. BEARTNG)



ELEVATION

PILE	ELEVATION
P1	3531.608
P2	3531.431
P3	3531.252
P4	3531.074
P5	3530.896
P6	3530.717

PROJECT NO. B-3926  
WATAUGA COUNTY  
 STATION: 32+85.50 -L2-  
 SHEET 1 OF 3

STATE OF NORTH CAROLINA  
 DEPARTMENT OF TRANSPORTATION  
 RALEIGH

SUBSTRUCTURE  
 END BENT No. 1



REVISIONS				SHEET NO.
NO.	BY:	DATE:	NO.	DATE:
1			3	
2			4	

DRAWN BY: R. G. EMERSON DATE: 7/03  
 CHECKED BY: B. N. GRADY DATE: 8/03