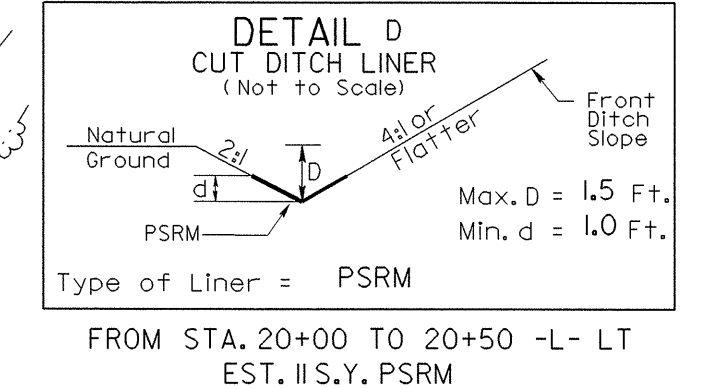
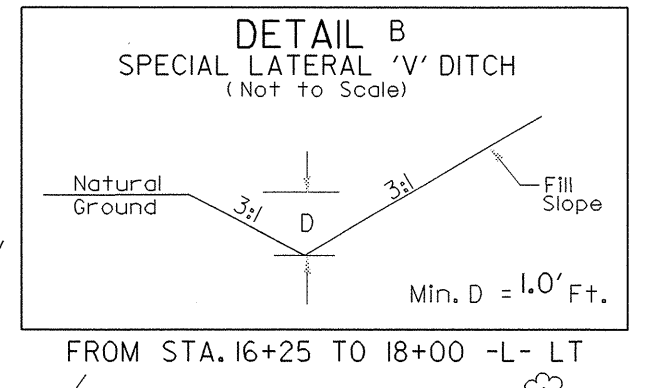
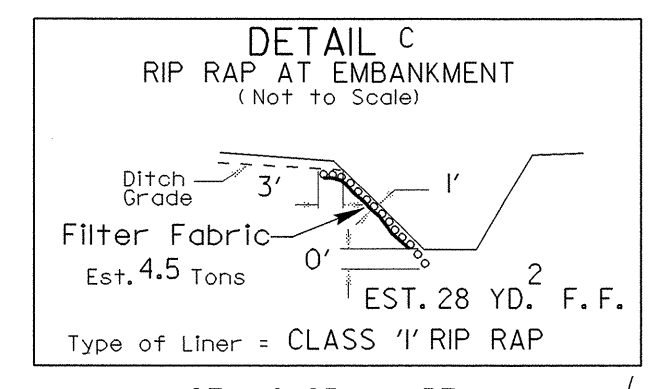
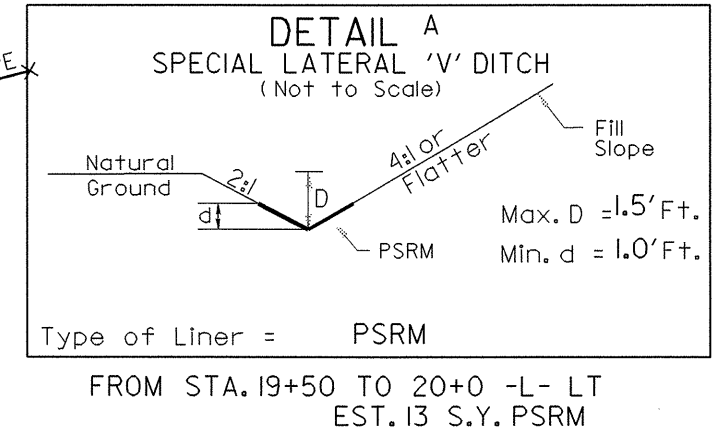


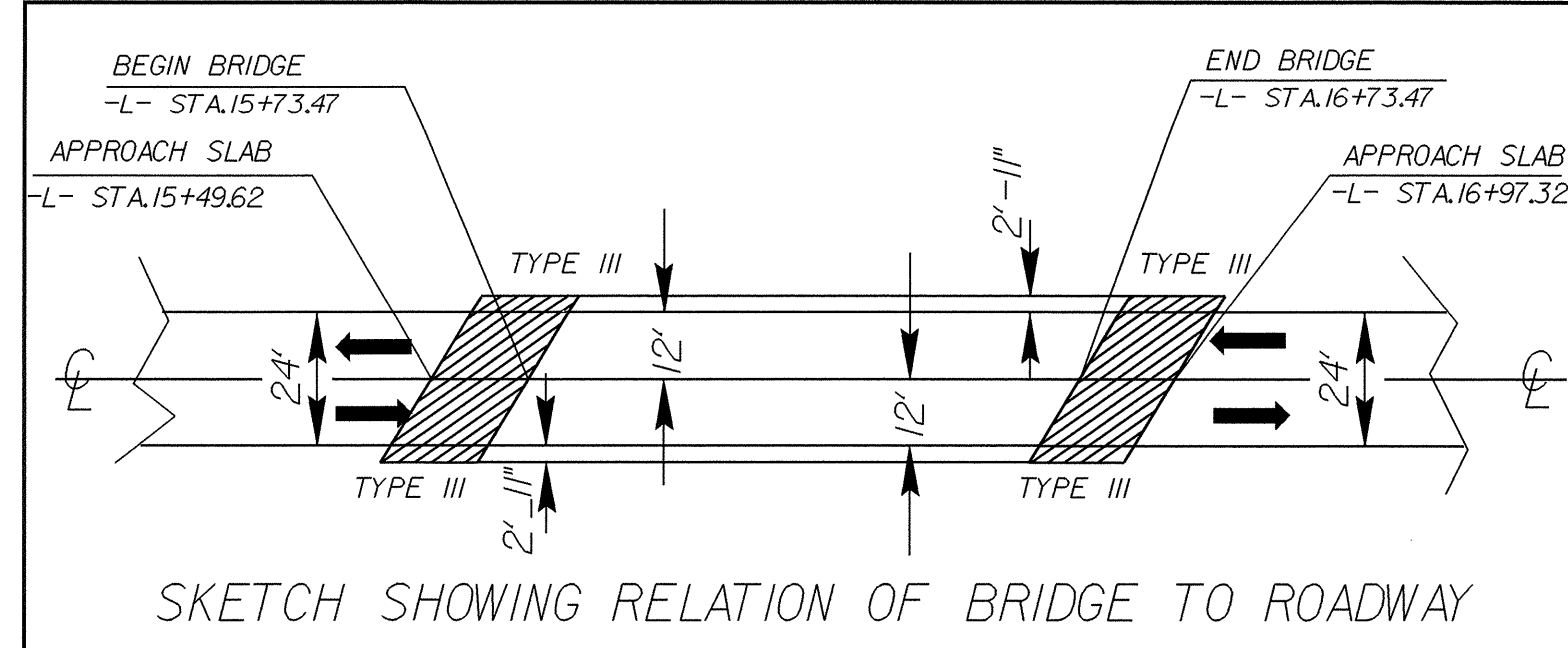
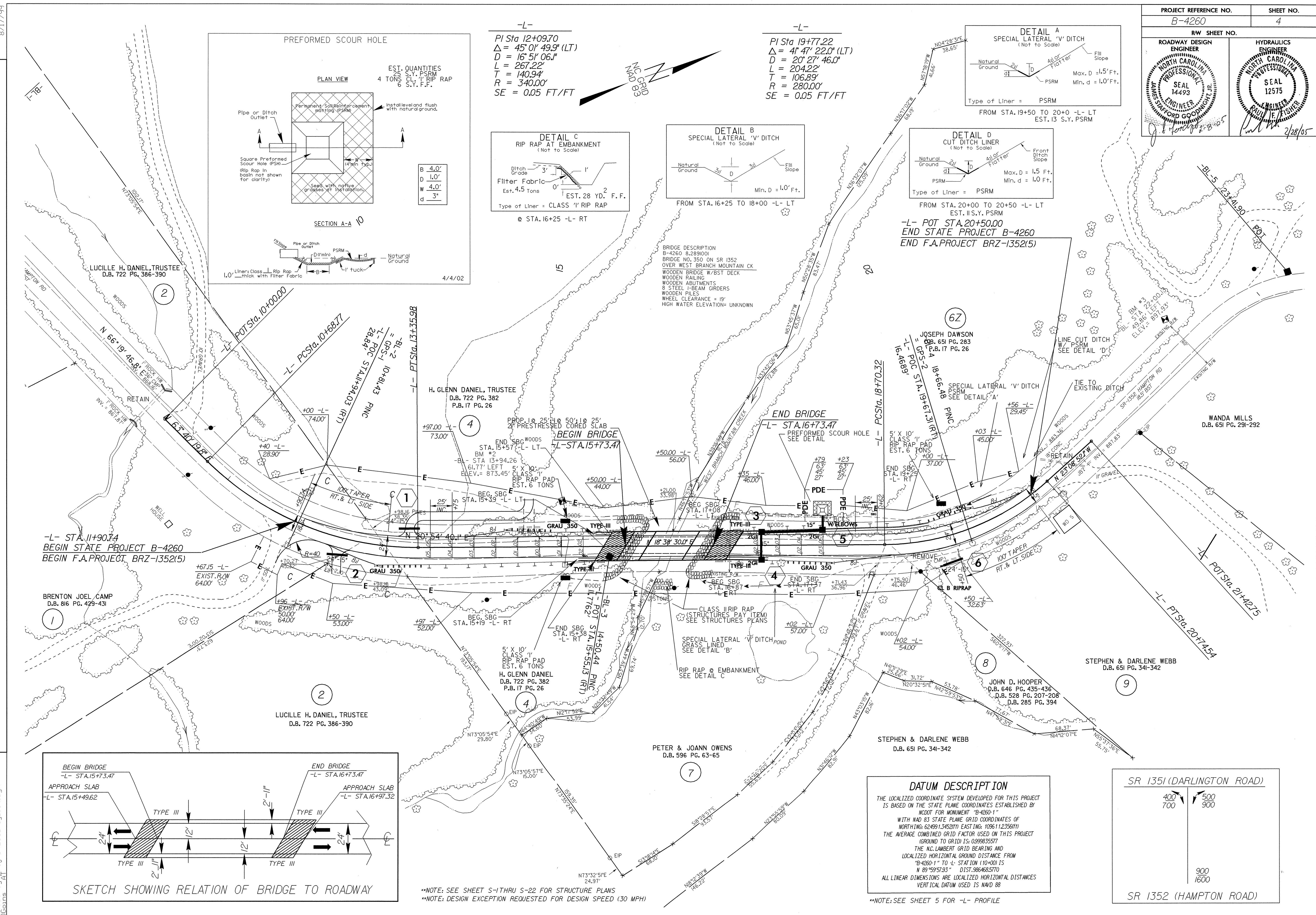
-L-
PI Sta 12+09.70
Δ = 45' 01" 49.9" (LT)
D = 16' 51" 06.1"
L = 267.22'
T = 140.94'
R = 340.00'
SE = 0.05 FT/FT

-L-
PI Sta 19+77.22
Δ = 41' 47" 22.0" (LT)
D = 20' 27" 46.0"
L = 204.22'
T = 106.89'
R = 280.00'
SE = 0.05 FT/FT



-L- POT STA. 20+50.00
END STATE PROJECT B-4260
END F.A. PROJECT BRZ-1352(5)

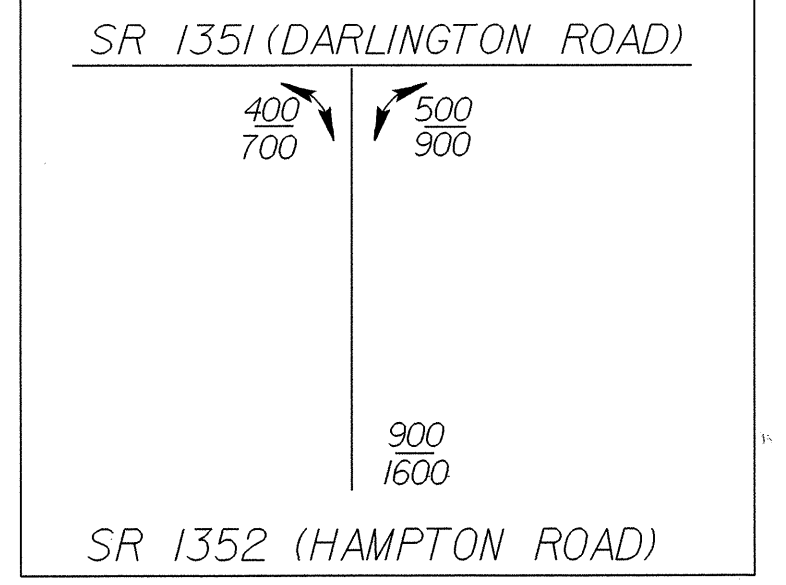
BRIDGE DESCRIPTION
B-4260 8.289001
BRIDGE NO. 350 ON SR 1352
OVER WEST BRANCH MOUNTAIN CK
WOODEN BRIDGING W/BSI DECK
WOODEN RAILING
WOODEN ABUTMENTS
8 STEEL I-BEAM GIRDERS
WOODEN PILES
WHEEL CLEARANCE = 19'
HIGH WATER ELEVATION= UNKNOWN



DATUM DESCRIPTION

THE LOCALIZED COORDINATE SYSTEM DEVELOPED FOR THIS PROJECT IS BASED ON THE STATE PLANE COORDINATES ESTABLISHED BY NCDOT FOR MONUMENT "B-4260-1" WITH NAD 83 STATE PLANE COORDINATES OF NORTHING: 624991.3452(11) EASTING: 10961.12356(11) THE AVERAGE COMBINED GRID FACTOR USED ON THIS PROJECT (GROUND TO GRID) IS: 0.99983557 THE N.C. LAMBERT GRID BEARING AND LOCALIZED HORIZONTAL GROUND DISTANCE FROM "B-4260-1" TO -L- STA. 10+100.00 IS N 89°59'57.93" DIST. 986468.570 ALL LINEAR DIMENSIONS ARE LOCALIZED HORIZONTAL DISTANCES VERTICAL DATUM USED IS NAVD 88

**NOTE: SEE SHEET 5 FOR -L- PROFILE



**NOTE: SEE SHEET S-1 THRU S-22 FOR STRUCTURE PLANS
**NOTE: DESIGN EXCEPTION REQUESTED FOR DESIGN SPEED (30 MPH)

REVISIONS

B.17/99

07-FEB-2005 15:23 b4260_rdy_s04.dgn
T:\cgoins\rd\04oce34