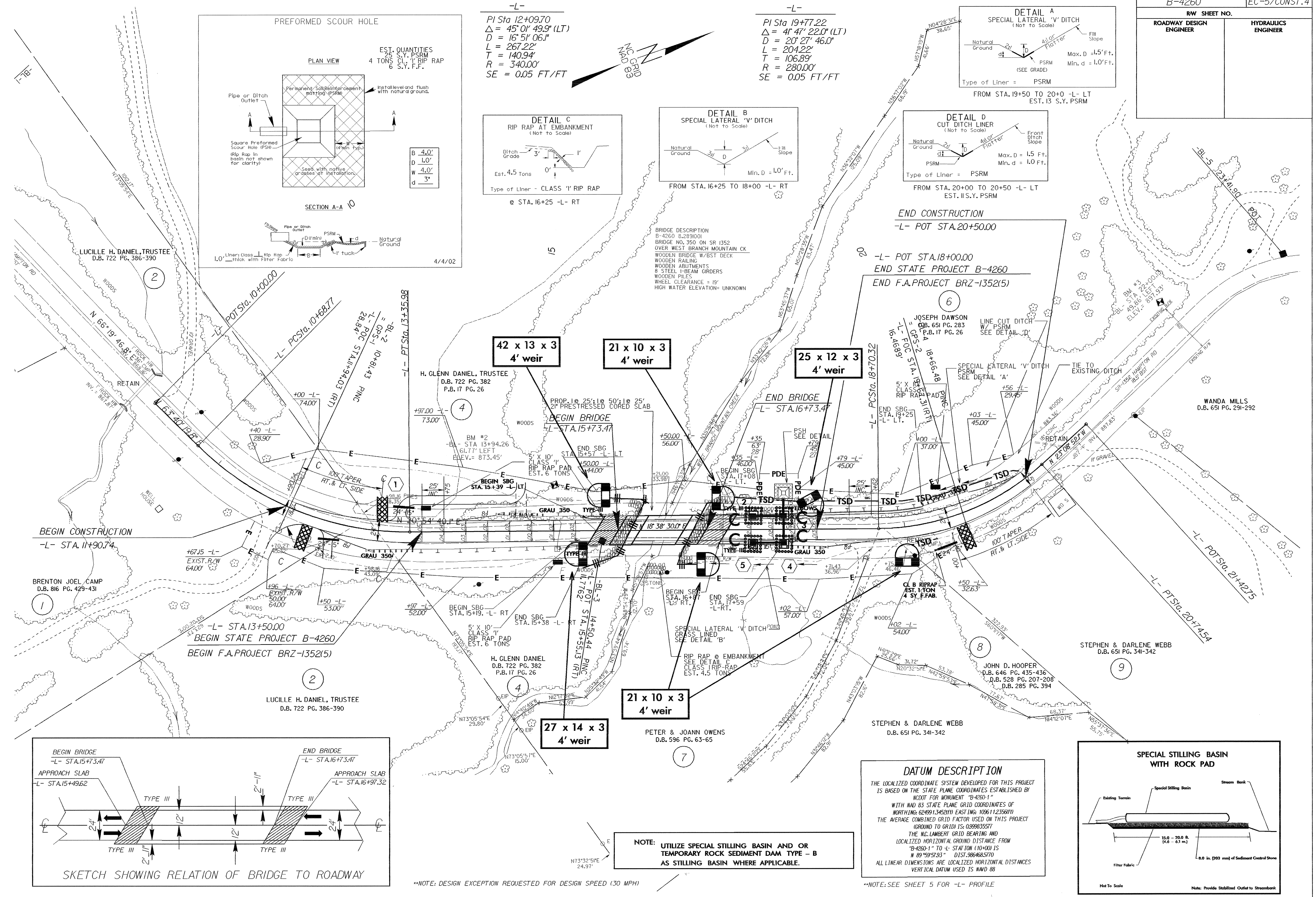
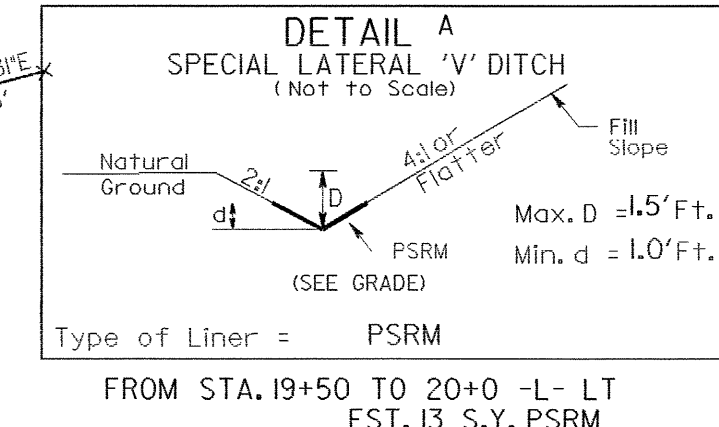
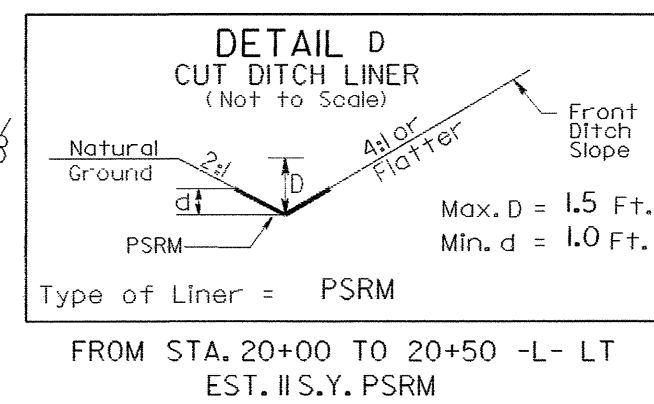
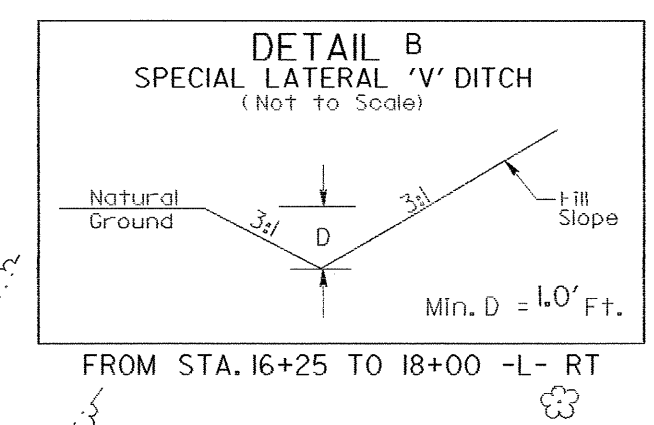
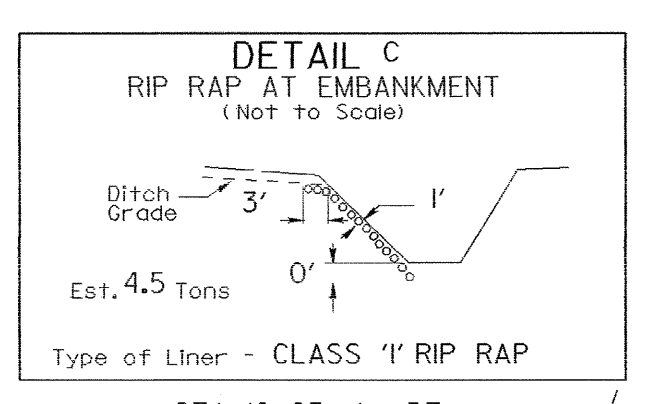
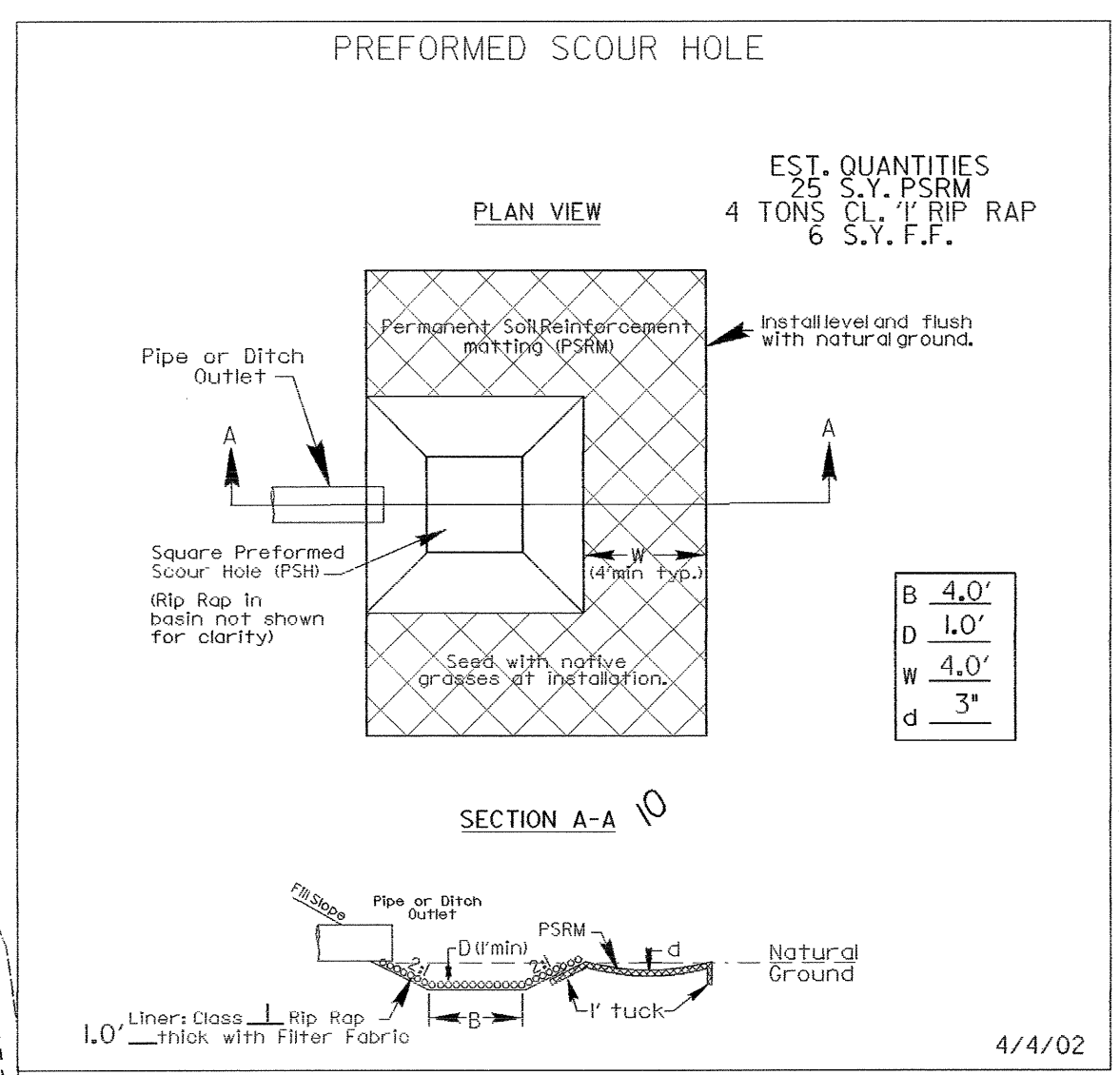


PROJECT REFERENCE NO.	SHEET NO.
B-4260	EC-5/CONST. 4
RW SHEET NO.	
ROADWAY DESIGN ENGINEER	HYDRAULICS ENGINEER

-L-
 PI Sta 12+09.70
 $\Delta = 45^{\circ} 01' 49.9''$ (LT)
 $D = 16^{\circ} 51' 06.1''$
 $L = 267.22'$
 $T = 140.94'$
 $R = 340.00'$
 $SE = 0.05$ FT/FT

-L-
 PI Sta 19+77.22
 $\Delta = 41^{\circ} 47' 22.0''$ (LT)
 $D = 20^{\circ} 27' 46.0''$
 $L = 204.22'$
 $T = 106.89'$
 $R = 280.00'$
 $SE = 0.05$ FT/FT



BRIDGE DESCRIPTION
 B-4260 8,289,001
 BRIDGE NO. 350 ON SR 1352
 OVER WEST BRANCH MOUNTAIN CK
 WOODEN BRIDGE W/BSST DECK
 WOODEN RAILING
 WOODEN ABUTMENTS
 8 STEEL I-BEAM GIRDERS
 WOODEN PILES
 WHEEL CLEARANCE = 19'
 HIGH WATER ELEVATION= UNKNOWN

END CONSTRUCTION
 -L- POT STA. 20+50.00
 END STATE PROJECT B-4260
 END F.A. PROJECT BRZ-1352(5)

JOSEPH DAWSON
 D.B. 651 PG. 283
 P.B. 17 PG. 26
 LINE CUT DITCH
 W/ PSRM
 SEE DETAIL 'D'

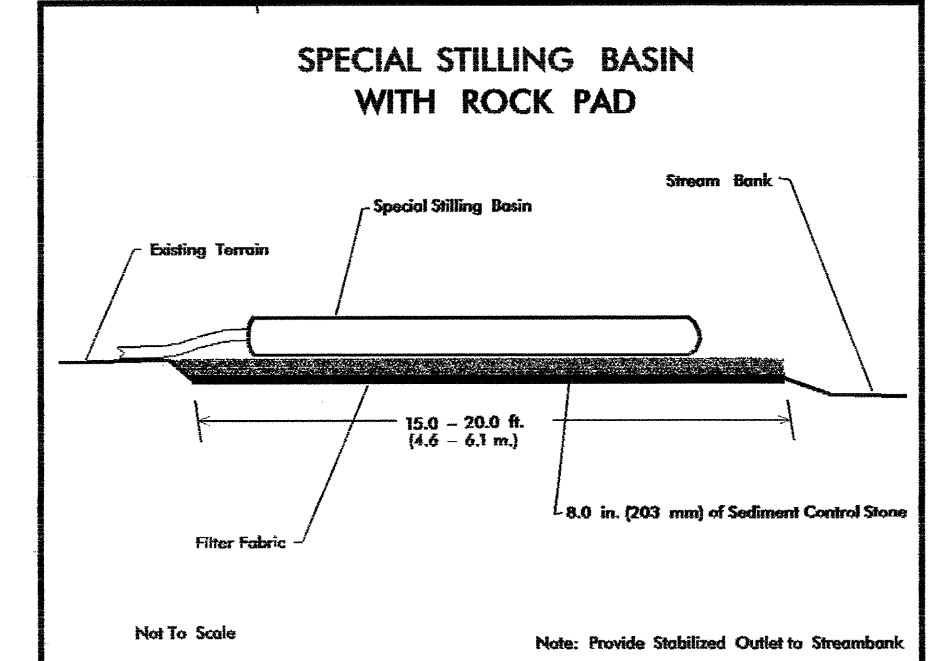
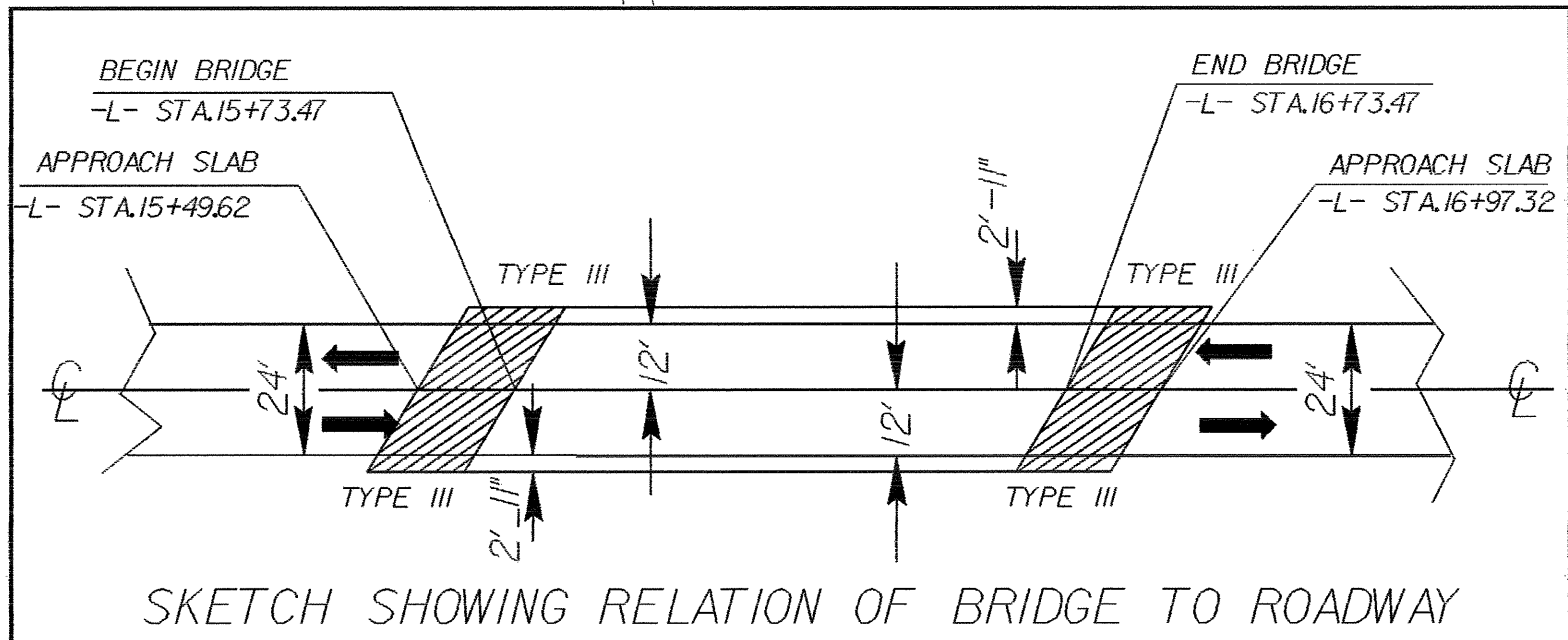
STEPHEN & DARLENE WEBB
 D.B. 651 PG. 341-342

JOHN D. HOOPER
 D.B. 646 PG. 435-436
 D.B. 528 PG. 207-208
 D.B. 285 PG. 394

STEPHEN & DARLENE WEBB
 D.B. 651 PG. 341-342

NOTE: UTILIZE SPECIAL STILLING BASIN AND OR TEMPORARY ROCK SEDIMENT DAM TYPE - B AS STILLING BASIN WHERE APPLICABLE.

NOTE: SEE SHEET 5 FOR -L- PROFILE



DATUM DESCRIPTION
 THE LOCALIZED COORDINATE SYSTEM DEVELOPED FOR THIS PROJECT IS BASED ON THE STATE PLANE COORDINATES ESTABLISHED BY NCOT FOR MONUMENT 'B-4260-1' WITH NAD 83 STATE PLANE COORDINATES OF NORTHING 624913452(11) EASTING 1096112356(11). THE AVERAGE COMBINED GRID FACTOR USED ON THIS PROJECT (GROUND TO GRID) IS: 0.99935577. THE N.C. LAMBERT GRID BEARING AND LOCALIZED HORIZONTAL GROUND DISTANCE FROM 'B-4260-1' TO -L- STATION (10+00) IS N 89°59'57.93" DIST. 98648.5770. ALL LINEAR DIMENSIONS ARE LOCALIZED HORIZONTAL DISTANCES. VERTICAL DATUM USED IS NAVD 88.

NOTE: DESIGN EXCEPTION REQUESTED FOR DESIGN SPEED (30 MPH)