

GENERAL NOTES

ADAPT THE TRAFFIC CONTROL PLANS, WHEN DIRECTED BY THE ENGINEER, TO MEET FIELD CONDITIONS TO PROVIDE SAFE AND EFFICIENT TRAFFIC MOVEMENT. CHANGES MAY BE REQUIRED WHEN PHYSICAL DIMENSIONS IN THE DETAIL DRAWINGS, STANDARD DETAILS AND ROADWAY DETAILS ARE NOT ATTAINABLE, OR RESULT IN DUPLICATE, OR UNDESIRABLE OVERLAPPING OF DEVICES. MODIFICATION MAY INCLUDE: MOVING, SUPPLEMENTING, COVERING OR REMOVAL OF DEVICES.

THE FOLLOWING GENERAL NOTES APPLY AT ALL TIMES FOR THE DURATION OF THE CONSTRUCTION PROJECT, EXCEPT WHEN OTHERWISE NOTED IN THE PLAN, OR DIRECTED BY THE ENGINEER.

TRAFFIC PATTERN ALTERATIONS

A) NOTIFY THE ENGINEER 21 CALENDAR DAYS PRIOR TO ANY TRAFFIC PATTERN ALTERATION.

SIGNING

- B) PROVIDE PERMANENT SIGNING WITHIN THE PROJECT LIMITS.
- C) STATE FORCES WILL BE RESPONSIBLE FOR DETOUR SIGNING OFF THE PROJECT LIMITS.
- D) STATE FORCES WILL COVER OR REMOVE ALL DETOUR SIGNS OFF THE PROJECT LIMITS, WHEN A DETOUR IS NOT IN OPERATION.
- E) ENSURE ALL NECESSARY SIGNING IS IN PLACE PRIOR TO ALTERING ANY TRAFFIC PATTERN.

TRAFFIC CONTROL DEVICES

F) PLACE TYPE III BARRICADES, WITH "ROAD CLOSED" SIGN (R11-2) ATTACHED, OF SUFFICIENT LENGTH TO CLOSE ENTIRE ROADWAY. STAGGER OR OVERLAP BARRICADES TO ALLOW FOR INGRESS OR EGRESS.

PAVEMENT MARKING AND MARKERS

G) INSTALL PAVEMENT MARKINGS AND PAVEMENT MARKERS ON THE FINAL SURFACE AS FOLLOWS:

ROAD NAME	MARKING	MARKER
SR 1456 (N. HOWARD MILL RD.)	PAINT	PERM. RAISED

H) PLACE AT LEAST TWO APPLICATIONS OF PAINT PAVEMENT MARKING ON THE FINAL WEARING SURFACE ON NEW ASPHALT PAVEMENT. PLACE ADDITIONAL APPLICATIONS OF PAINT UPON SUFFICIENT DRYING TIME, AS DETERMINED BY THE ENGINEER.

I) TIE PROPOSED PAVEMENT MARKING LINES TO EXISTING PAVEMENT MARKING LINES

PHASING

NOTE: STATE FORCES WILL INSTALL ALL DETOUR SIGNS PRIOR TO CLOSURE OF SR 1456 (N. HOWARD MILL RD.).

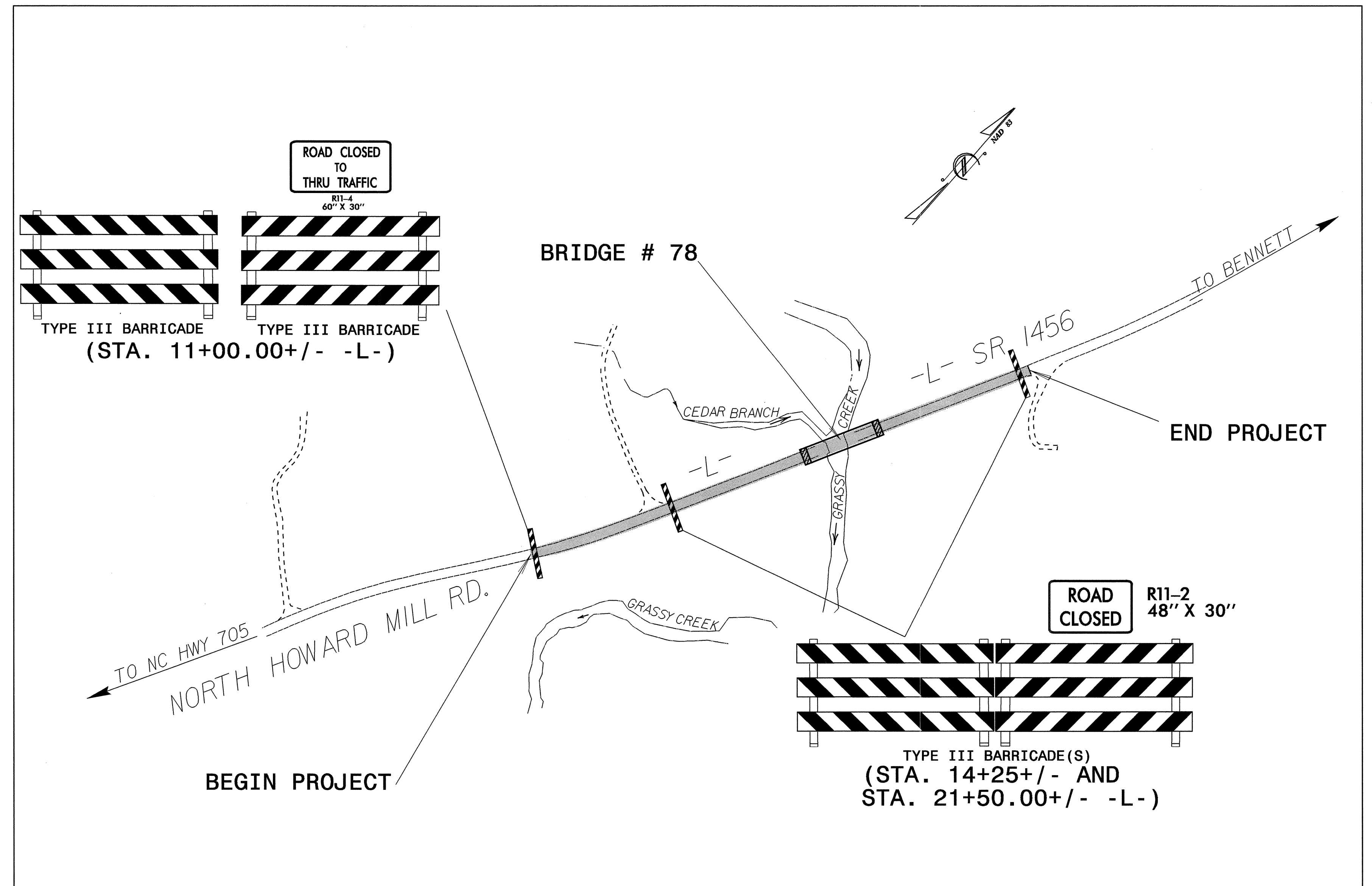
NOTE: MAINTAIN TRAFFIC ACCESS TO DRIVEWAYS LOCATED WITHIN THE PROJECT LIMITS UTILIZING DRUMS TO DELINEATE THE TRAVELWAY.

STEP 1: USING RSD 1101.03, SHEET 1 OF 9 AND DETAIL BELOW CLOSE SR 1456 (N. HOWARD MILL RD.) FROM -L- STA. 11+00.00 TO -L- STA. 21+50.00.

STEP 2: CONSTRUCT PROPOSED STRUCTURE AND ROADWAY UP TO AND INCLUDING FINAL LAYER OF SURFACE COURSE FROM -L- STA. 11+00.00 TO -L- STA. 21+50.00.

- INSTALL FINAL PAVEMENT MARKINGS (PAINT) AND MARKERS (PERMANENT/RAISED) ON SR 1456 (N. HOWARD MILL RD.) FROM -L- STA. 11+00.00 TO -L- STA. 21+50.00.

STEP 3: REMOVE TRAFFIC CONTROL DEVICES AND OPEN SR 1456 (N. HOWARD MILL RD.) TO FINAL TRAFFIC PATTERN.



28-DEC-2004 14:48
\\netrs-cct501\B3875\54\TCEN\B3875_tcp_1&2.dgn
mmmmr\rduez AT 11/11/04

APPROVED:	DATE: 20 DEC 04	PROJECT NOTES / PHASING / BARRICADE DETAIL	
	SCALE: NONE		REVISIONS
	DATE: NOV 2004		
	DESIGN BY: MM		
	REVIEWED BY: JG		