
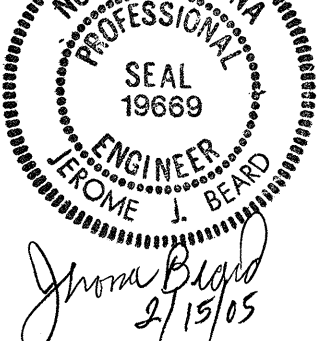


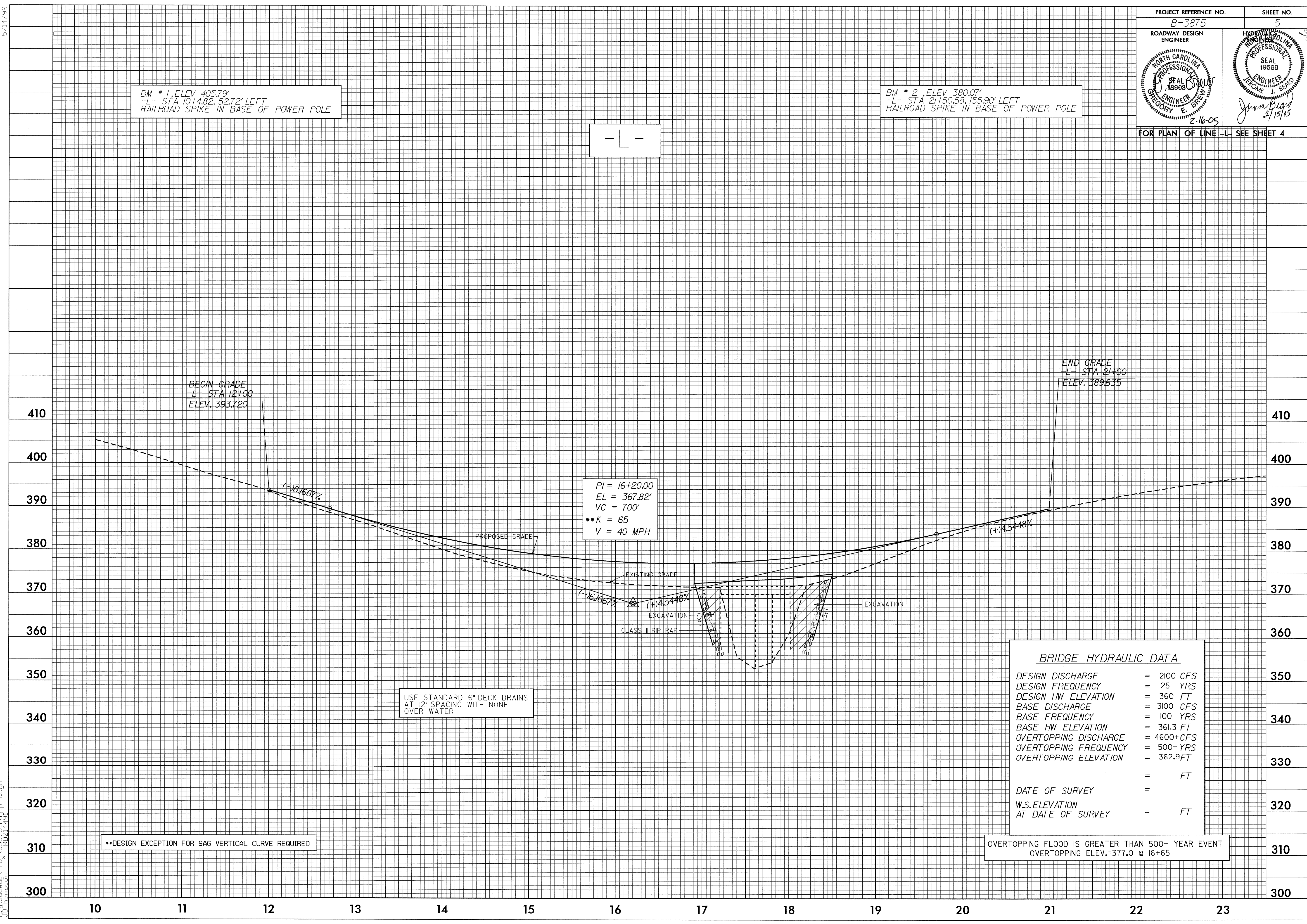
5/14/99

PROJECT REFERENCE NO. B-3875	SHEET NO. 5
ROADWAY DESIGN ENGINEER	HYDRAULIC ENGINEER
	
2-16-05	2/15/05
FOR PLAN OF LINE -L- SEE SHEET 4	

BM * 1, ELEV 405.79'
-L- STA 10+482.5272' LEFT
RAILROAD SPIKE IN BASE OF POWER POLE

BM * 2, ELEV 380.07'
-L- STA 21+50.58, 155.90' LEFT
RAILROAD SPIKE IN BASE OF POWER POLE

-L-



15-FEB-2005 15:44
C:\Roadway\Proj\163875\rdy-pf1.dgn
JB Thompson H RD2445

**DESIGN EXCEPTION FOR SAG VERTICAL CURVE REQUIRED

USE STANDARD 6" DECK DRAINS
AT 12' SPACING WITH NONE
OVER WATER

BRIDGE HYDRAULIC DATA

DESIGN DISCHARGE	=	2100 CFS
DESIGN FREQUENCY	=	25 YRS
DESIGN HW ELEVATION	=	360 FT
BASE DISCHARGE	=	3100 CFS
BASE FREQUENCY	=	100 YRS
BASE HW ELEVATION	=	361.3 FT
OVERTOPPING DISCHARGE	=	4600+ CFS
OVERTOPPING FREQUENCY	=	500+ YRS
OVERTOPPING ELEVATION	=	362.9 FT
DATE OF SURVEY	=	
W.S. ELEVATION AT DATE OF SURVEY	=	

OVERTOPPING FLOOD IS GREATER THAN 500+ YEAR EVENT
OVERTOPPING ELEV.=377.0 @ 16+65