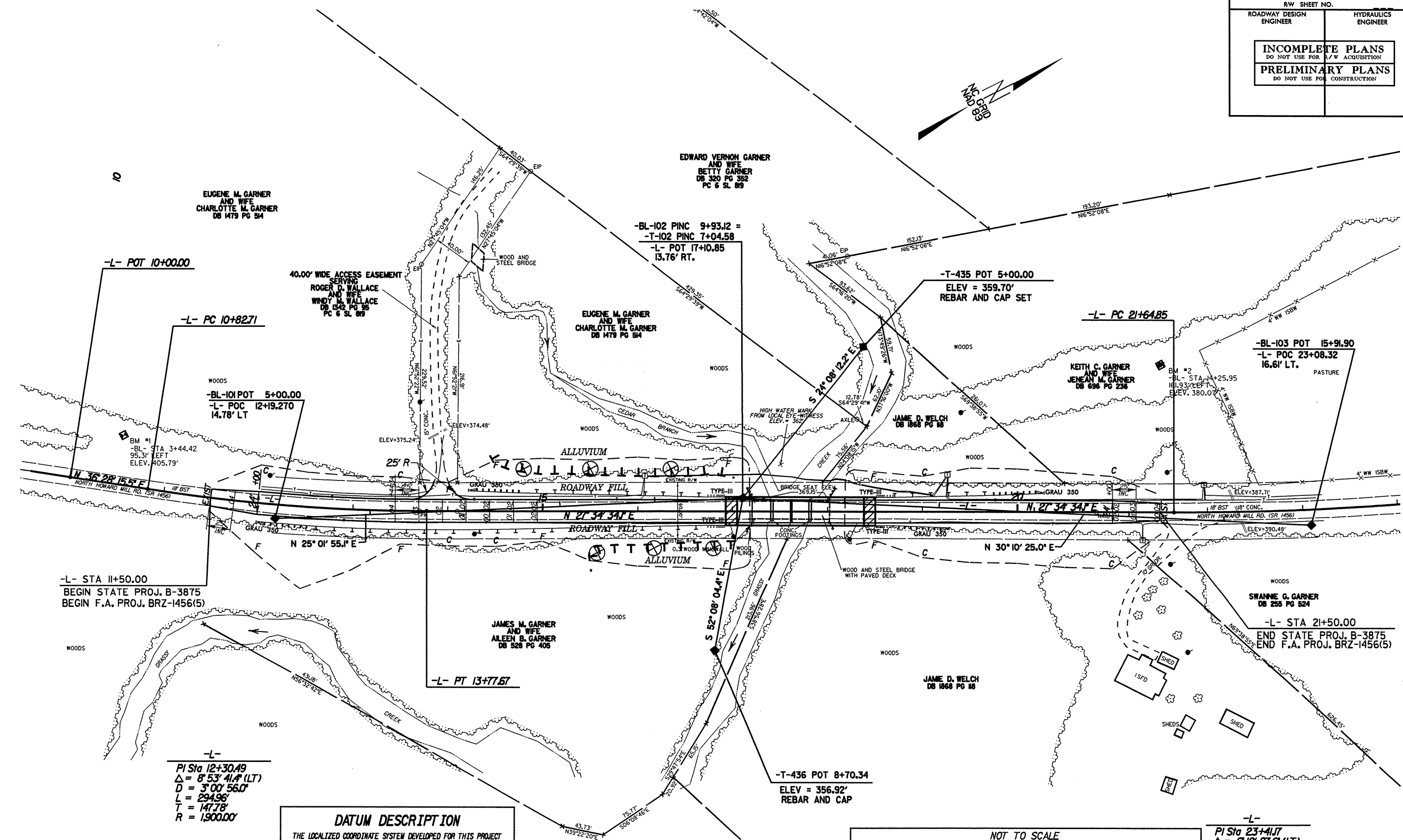


PROJECT REFERENCE NO.	SHEET NO.
B-3875	4
RW SHEET NO.	
ROADWAY DESIGN ENGINEER	HYDRAULICS ENGINEER
<b>INCOMPLETE PLANS</b> DO NOT USE FOR R/W ACQUISITION <b>PRELIMINARY PLANS</b> DO NOT USE FOR CONSTRUCTION	

8/17/99

REVISIONS



-L- STA 11+50.00  
 BEGIN STATE PROJ. B-3875  
 BEGIN F.A. PROJ. BRZ-1456(5)

-L- STA 21+50.00  
 END STATE PROJ. B-3875  
 END F.A. PROJ. BRZ-1456(5)

-L-  
 PI Sta 12+30.49  
 $\Delta = 8^{\circ} 53' 41.4''$  (LT)  
 D = 3'00' 56.0"  
 L = 294.96'  
 T = 147.78'  
 R = 1,900.00'

-L-  
 PI Sta 23+41.17  
 $\Delta = 6^{\circ} 18' 27.6''$  (LT)  
 D = 1'47' 25.8"  
 L = 352.29'  
 T = 176.32'  
 R = 3,200.00'

**DATUM DESCRIPTION**  
 THE LOCALIZED COORDINATE SYSTEM DEVELOPED FOR THIS PROJECT IS BASED ON THE STATE PLANE COORDINATES ESTABLISHED BY MCDOT FOR MONUMENT "B3875-1" WITH HAD 83 STATE PLANE GRID COORDINATES OF NORTHING: 630399.87(411) EASTING: 182069.07(311) THE AVERAGE COMBINED GRID FACTOR USED ON THIS PROJECT (GROUND TO GRID) IS: 0.99994295 THE N.C. LAMBERT GRID BEARING AND LOCALIZED HORIZONTAL GROUND DISTANCE FROM "B3875-1" TO -L- STATION 11+50.00 IS N 25° 01' 22.34" E 207.198' ALL LINEAR DIMENSIONS ARE LOCALIZED HORIZONTAL DISTANCES VERTICAL DATUM USED IS MVD 29

