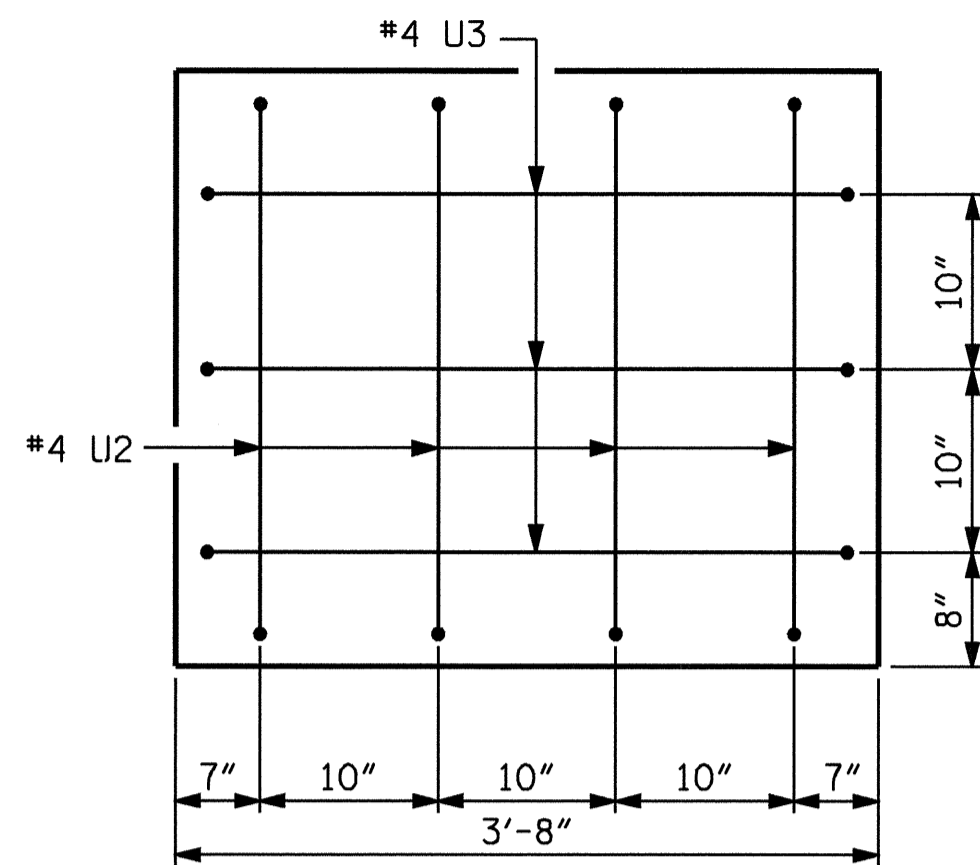
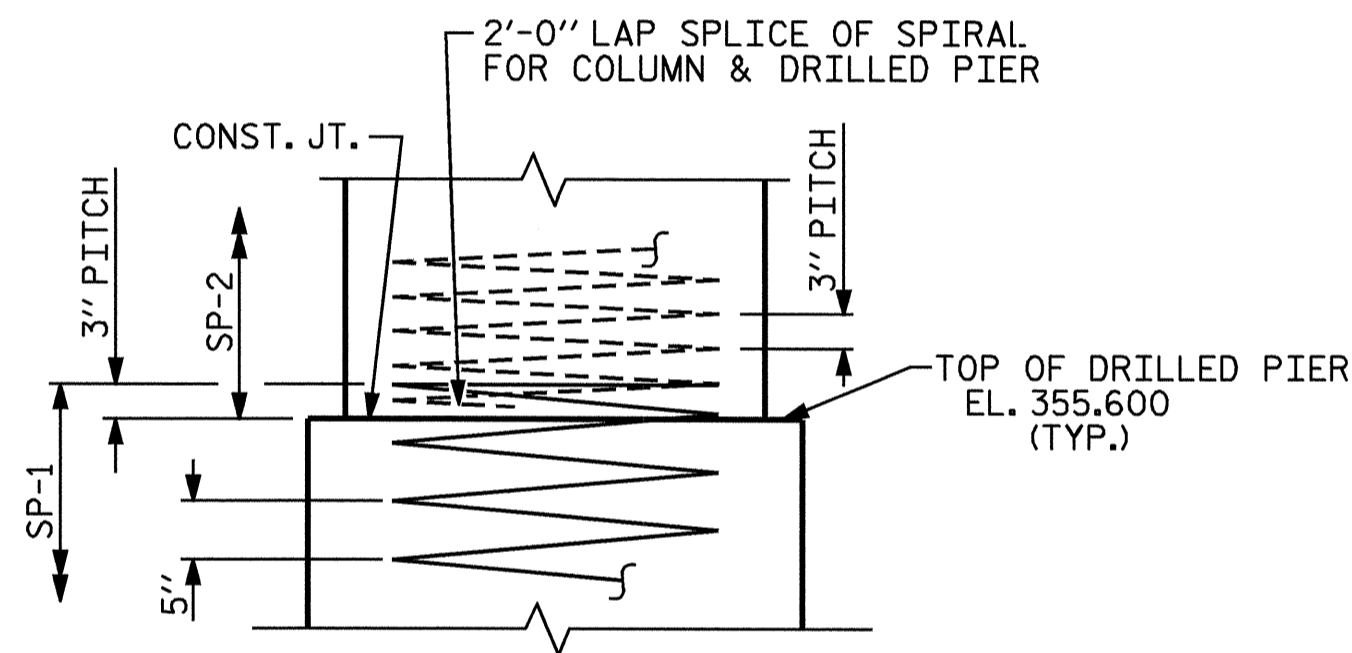


SECTION A-A

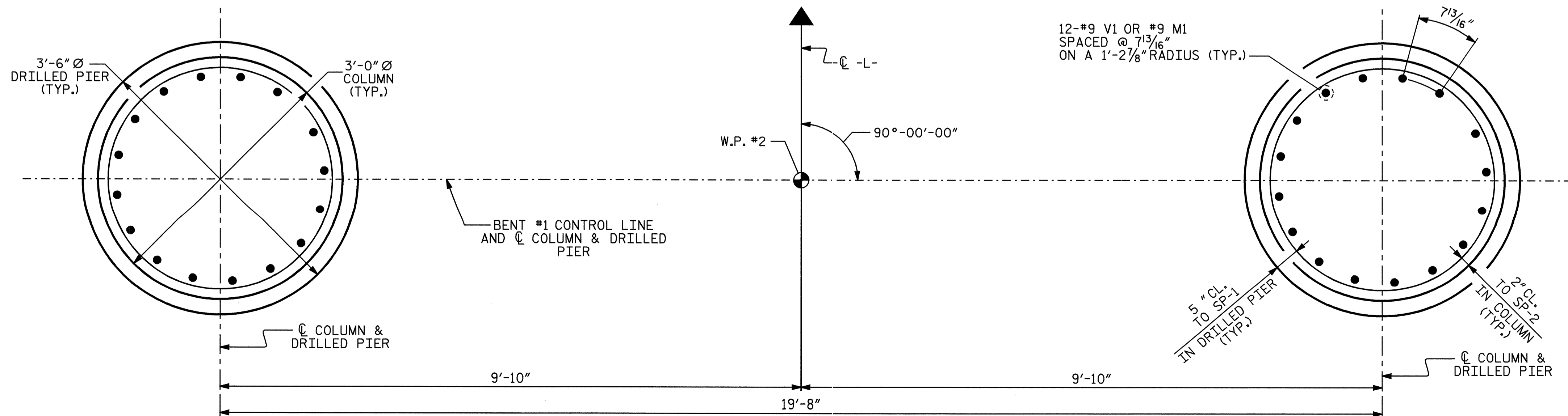


END OF CAP DETAIL



CONSTRUCTION JOINT DETAIL

BAR TYPES				BILL OF MATERIAL																																																																																																																																																						
				BENT #1																																																																																																																																																						
				<table border="1"> <thead> <tr> <th>BAR NO</th> <th>SIZE</th> <th>TYPE</th> <th>LENGTH</th> <th>WEIGHT</th> </tr> </thead> <tbody> <tr><td>B1</td><td>6</td><td>11</td><td>STR</td><td>29'-10"</td><td>951</td></tr> <tr><td>B2</td><td>6</td><td>11</td><td>1</td><td>32'-10"</td><td>1047</td></tr> <tr><td>B3</td><td>4</td><td>4</td><td>STR</td><td>29'-10"</td><td>80</td></tr> <tr><td>M1</td><td>24</td><td>9</td><td>STR</td><td>19'-5"</td><td>1584</td></tr> <tr><td>S1</td><td>55</td><td>5</td><td>3</td><td>9'-6"</td><td>543</td></tr> <tr><td>U1</td><td>28</td><td>4</td><td>4</td><td>6'-4"</td><td>118</td></tr> <tr><td>U2</td><td>8</td><td>4</td><td>4</td><td>5'-4"</td><td>29</td></tr> <tr><td>U3</td><td>6</td><td>4</td><td>4</td><td>6'-0"</td><td>24</td></tr> <tr><td>V1</td><td>24</td><td>9</td><td>2</td><td>16'-3"</td><td>1326</td></tr> <tr><td colspan="4">REINFORCING STEEL</td><td>lbs.</td><td>5702</td></tr> <tr><td>SP-1</td><td>2</td><td>*</td><td>5</td><td>222'-1"</td><td>463</td></tr> <tr><td>SP-2</td><td>2</td><td>**</td><td>6</td><td>453'-10"</td><td>606</td></tr> <tr><td colspan="4">SPIRAL COLUMN REINFORCING STEEL</td><td>lbs.</td><td>1069</td></tr> <tr><td colspan="4">CLASS A CONCRETE BREAKDOWN</td><td></td><td></td></tr> <tr><td>POUR #2</td><td colspan="3">(COLUMNS)</td><td>6.8</td><td>C.Y.</td></tr> <tr><td>POUR #3</td><td colspan="3">(CAP)</td><td>12.6</td><td>C.Y.</td></tr> <tr><td>TOTAL</td><td colspan="3"></td><td>19.4</td><td>C.Y.</td></tr> <tr><td colspan="4">DRILLED PIER CONCRETE BREAKDOWN</td><td></td><td></td></tr> <tr><td>POUR #1</td><td colspan="3">(DRILLED PIERS)</td><td>7.8</td><td>C.Y.</td></tr> <tr><td colspan="4">3'-6" Ø DRILLED PIERS NOT IN SOIL</td><td>LINEAR FEET</td><td>14</td></tr> <tr><td colspan="4">3'-6" Ø DRILLED PIERS IN SOIL</td><td>LINEAR FEET</td><td>8.0</td></tr> <tr><td colspan="4">PERMANENT STEEL CASING FOR 3'-6" Ø DRILLED PIERS</td><td>LINEAR FEET</td><td>8.0</td></tr> <tr><td colspan="4">CSL TUBES</td><td>LINEAR FEET</td><td>108</td></tr> <tr><td colspan="4">CROSSHOLE SONIC LOGGING</td><td>EA.</td><td>1</td></tr> </tbody> </table>		BAR NO	SIZE	TYPE	LENGTH	WEIGHT	B1	6	11	STR	29'-10"	951	B2	6	11	1	32'-10"	1047	B3	4	4	STR	29'-10"	80	M1	24	9	STR	19'-5"	1584	S1	55	5	3	9'-6"	543	U1	28	4	4	6'-4"	118	U2	8	4	4	5'-4"	29	U3	6	4	4	6'-0"	24	V1	24	9	2	16'-3"	1326	REINFORCING STEEL				lbs.	5702	SP-1	2	*	5	222'-1"	463	SP-2	2	**	6	453'-10"	606	SPIRAL COLUMN REINFORCING STEEL				lbs.	1069	CLASS A CONCRETE BREAKDOWN						POUR #2	(COLUMNS)			6.8	C.Y.	POUR #3	(CAP)			12.6	C.Y.	TOTAL				19.4	C.Y.	DRILLED PIER CONCRETE BREAKDOWN						POUR #1	(DRILLED PIERS)			7.8	C.Y.	3'-6" Ø DRILLED PIERS NOT IN SOIL				LINEAR FEET	14	3'-6" Ø DRILLED PIERS IN SOIL				LINEAR FEET	8.0	PERMANENT STEEL CASING FOR 3'-6" Ø DRILLED PIERS				LINEAR FEET	8.0	CSL TUBES				LINEAR FEET	108	CROSSHOLE SONIC LOGGING				EA.	1
BAR NO	SIZE	TYPE	LENGTH	WEIGHT																																																																																																																																																						
B1	6	11	STR	29'-10"	951																																																																																																																																																					
B2	6	11	1	32'-10"	1047																																																																																																																																																					
B3	4	4	STR	29'-10"	80																																																																																																																																																					
M1	24	9	STR	19'-5"	1584																																																																																																																																																					
S1	55	5	3	9'-6"	543																																																																																																																																																					
U1	28	4	4	6'-4"	118																																																																																																																																																					
U2	8	4	4	5'-4"	29																																																																																																																																																					
U3	6	4	4	6'-0"	24																																																																																																																																																					
V1	24	9	2	16'-3"	1326																																																																																																																																																					
REINFORCING STEEL				lbs.	5702																																																																																																																																																					
SP-1	2	*	5	222'-1"	463																																																																																																																																																					
SP-2	2	**	6	453'-10"	606																																																																																																																																																					
SPIRAL COLUMN REINFORCING STEEL				lbs.	1069																																																																																																																																																					
CLASS A CONCRETE BREAKDOWN																																																																																																																																																										
POUR #2	(COLUMNS)			6.8	C.Y.																																																																																																																																																					
POUR #3	(CAP)			12.6	C.Y.																																																																																																																																																					
TOTAL				19.4	C.Y.																																																																																																																																																					
DRILLED PIER CONCRETE BREAKDOWN																																																																																																																																																										
POUR #1	(DRILLED PIERS)			7.8	C.Y.																																																																																																																																																					
3'-6" Ø DRILLED PIERS NOT IN SOIL				LINEAR FEET	14																																																																																																																																																					
3'-6" Ø DRILLED PIERS IN SOIL				LINEAR FEET	8.0																																																																																																																																																					
PERMANENT STEEL CASING FOR 3'-6" Ø DRILLED PIERS				LINEAR FEET	8.0																																																																																																																																																					
CSL TUBES				LINEAR FEET	108																																																																																																																																																					
CROSSHOLE SONIC LOGGING				EA.	1																																																																																																																																																					
ALL BAR DIMENSIONS ARE OUT TO OUT.																																																																																																																																																										
* THE SP-1 SPIRAL REINFORCING STEEL SHALL BE W31 OR D-31 COLD DRAWN WIRE OR #5 PLAIN OR DEFORMED BAR.																																																																																																																																																										
** THE SP-2 SPIRAL REINFORCING STEEL SHALL BE W20 OR D-20 COLD DRAWN WIRE OR #4 PLAIN OR DEFORMED BAR.																																																																																																																																																										



PLAN OF COLUMNS AND DRILLED PIERS

ALL COLUMNS AND DRILLED PIERS ARE IDENTICAL

DRAWN BY : J.D. HAWK DATE : 4/03
CHECKED BY : J.G. KHARVA DATE : 4/03

PROJECT NO. B-3875
MOORE COUNTY
STATION: 17+70.00 -L-

SHEET 2 OF 2

STATE OF NORTH CAROLINA
DEPARTMENT OF TRANSPORTATION
RALEIGH
SUBSTRUCTURE
BENT #1



REVISIONS				SHEET NO.
NO.	BY:	DATE:	NO.	DATE:
1			3	
2			4	
				TOTAL SHEETS
				33