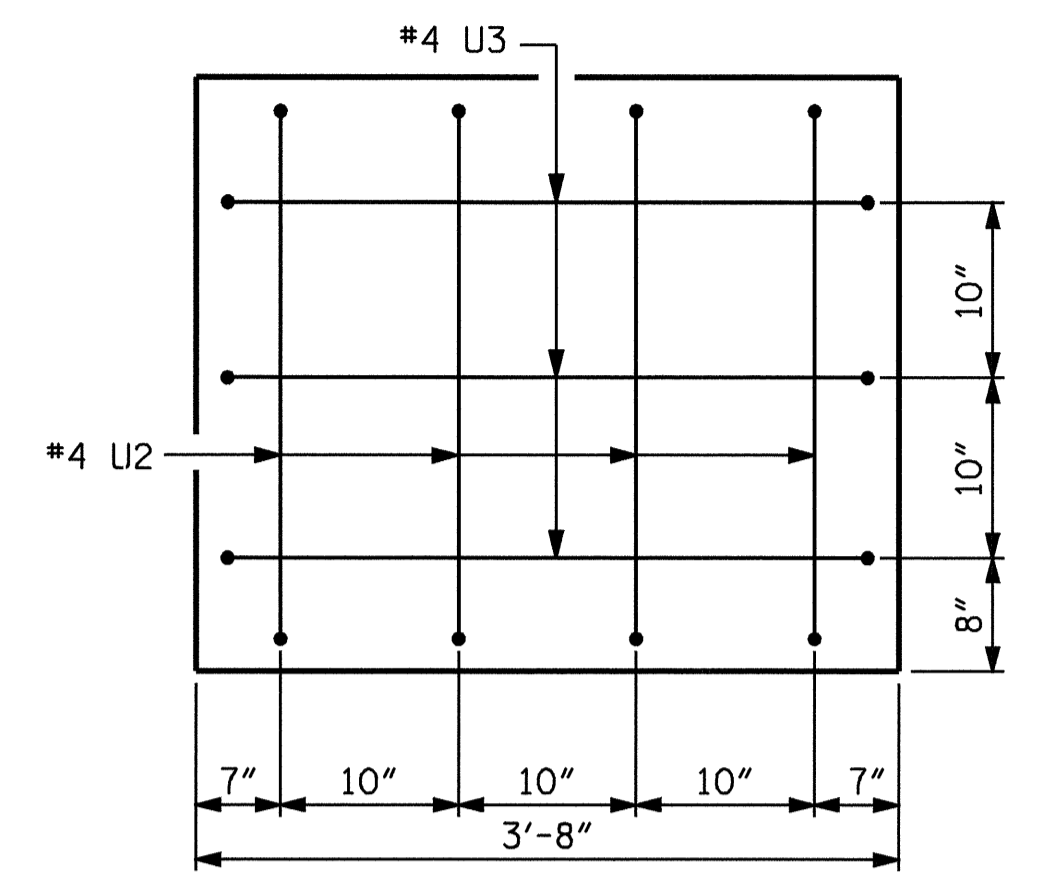
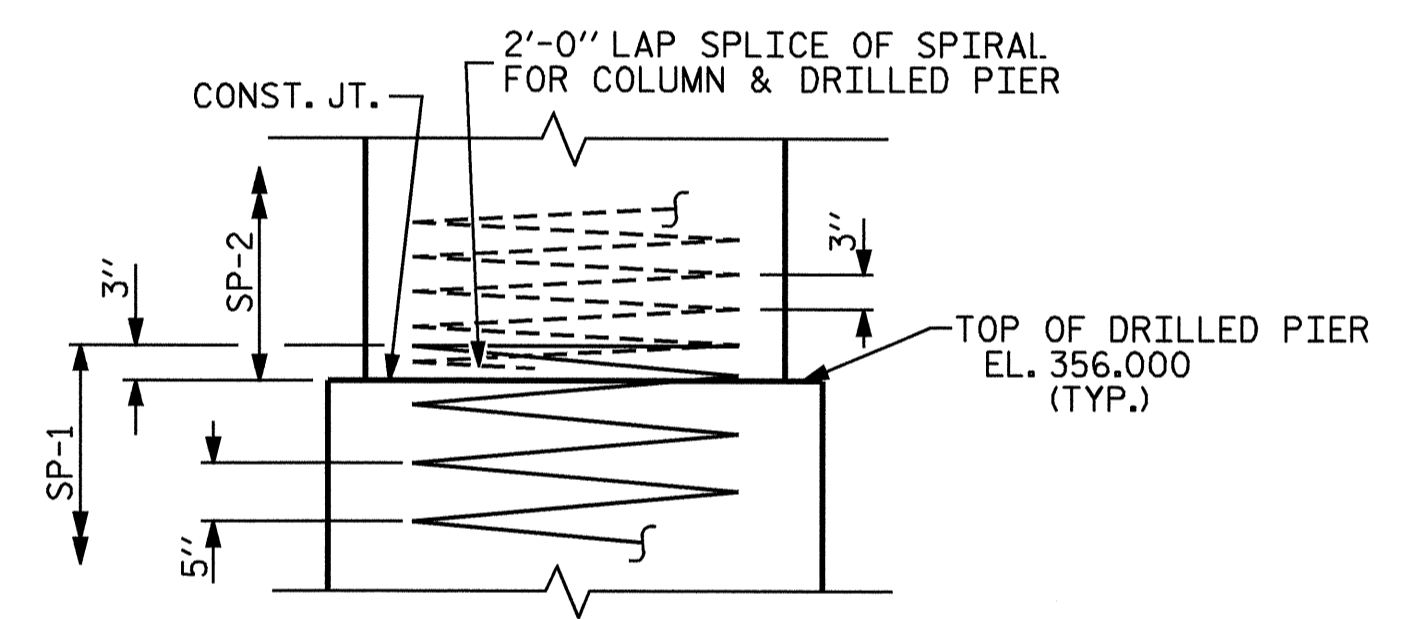


SECTION A-A



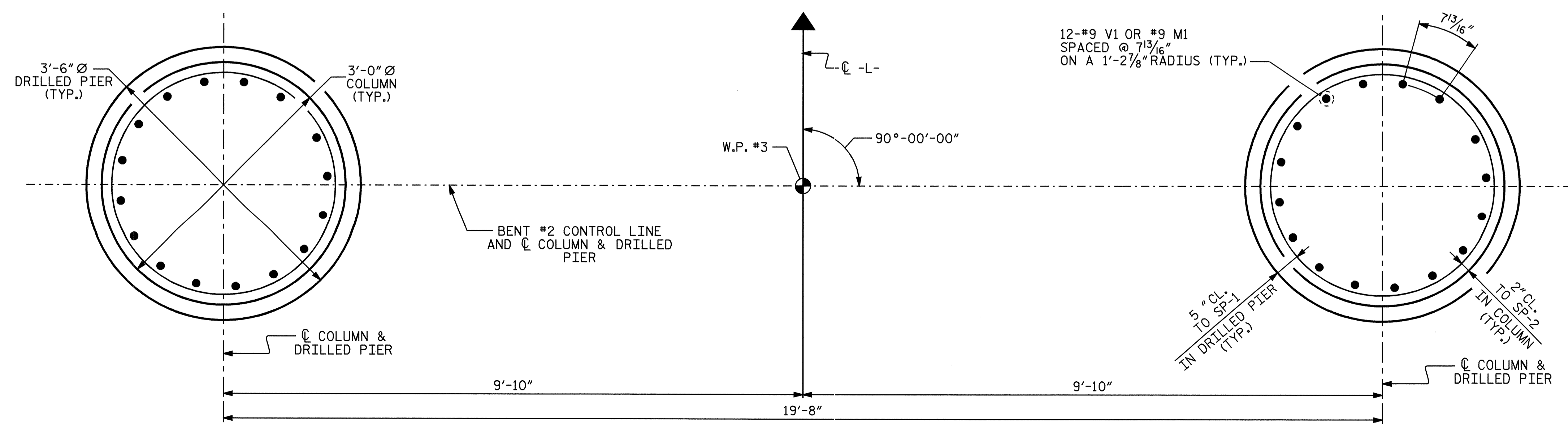
END OF CAP DETAIL



CONSTRUCTION JOINT DETAIL

BAR TYPES				BILL OF MATERIAL		
BENT #2						
BAR NO	SIZE	TYPE	LENGTH	WEIGHT		
B1	6	11	STR	29'-10"	951	
B2	6	11	1	32'-10"	1047	
B3	4	4	STR	29'-10"	80	
M1	24	9	STR	19'-5"	1584	
S1	55	5	3	9'-6"	543	
U1	28	4	4	6'-4"	118	
U2	8	4	4	5'-4"	29	
U3	6	4	4	6'-0"	24	
V1	24	9	2	16'-9"	1367	
REINFORCING STEEL				lbs.	5743	
SP-1	2	*	5	222'-1"	463	
SP-2	2	**	6	478'-7"	639	
SPIRAL COLUMN REINFORCING STEEL				lbs.	1102	
CLASS A CONCRETE BREAKDOWN						
POUR #2	(COLUMNS)			7.2	C.Y.	
POUR #3	(CAP)			12.6	C.Y.	
TOTAL				19.8	C.Y.	
DRILLED PIER CONCRETE BREAKDOWN						
POUR #1	(DRILLED PIERS)			7.8	C.Y.	
3'-6" Ø DRILLED PIERS NOT IN SOIL				LINEAR FEET	16	
3'-6" Ø DRILLED PIERS IN SOIL				LINEAR FEET	6.0	
PERMANENT STEEL CASING FOR 3'-6" Ø DRILLED PIERS				LINEAR FEET	6.0	
CSL TUBES				LINEAR FEET	108	

* THE SP-1 SPIRAL REINFORCING STEEL SHALL BE W31 OR D-31 COLD DRAWN WIRE OR #5 PLAIN OR DEFORMED BAR,
 ** THE SP-2 SPIRAL REINFORCING STEEL SHALL BE W20 OR D-20 COLD DRAWN WIRE OR #4 PLAIN OR DEFORMED BAR.



PLAN OF COLUMNS AND DRILLED PIERS

ALL COLUMNS AND DRILLED PIERS ARE IDENTICAL

DRAWN BY : J.D. HAWK DATE : 4/03
 CHECKED BY : J.G. KHARVA DATE : 4/03

PROJECT NO. B-3875
MOORE COUNTY
 STATION: 17+70.00 -L-

SHEET 2 OF 2

STATE OF NORTH CAROLINA
 DEPARTMENT OF TRANSPORTATION
 RALEIGH

SUBSTRUCTURE
 BENT #2



REVISIONS				SHEET NO.
NO.	BY:	DATE:	NO.	DATE:
1			3	
2			4	