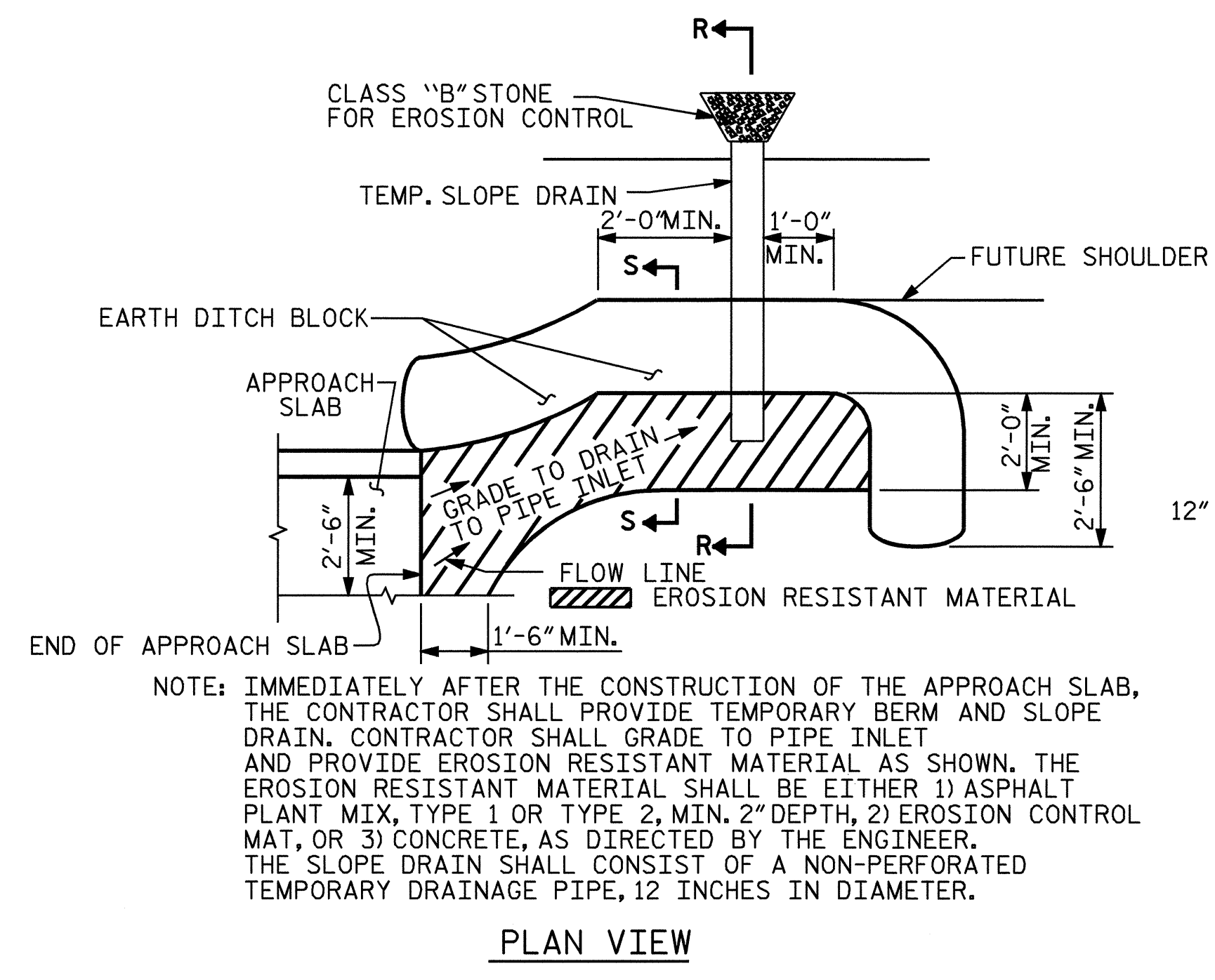
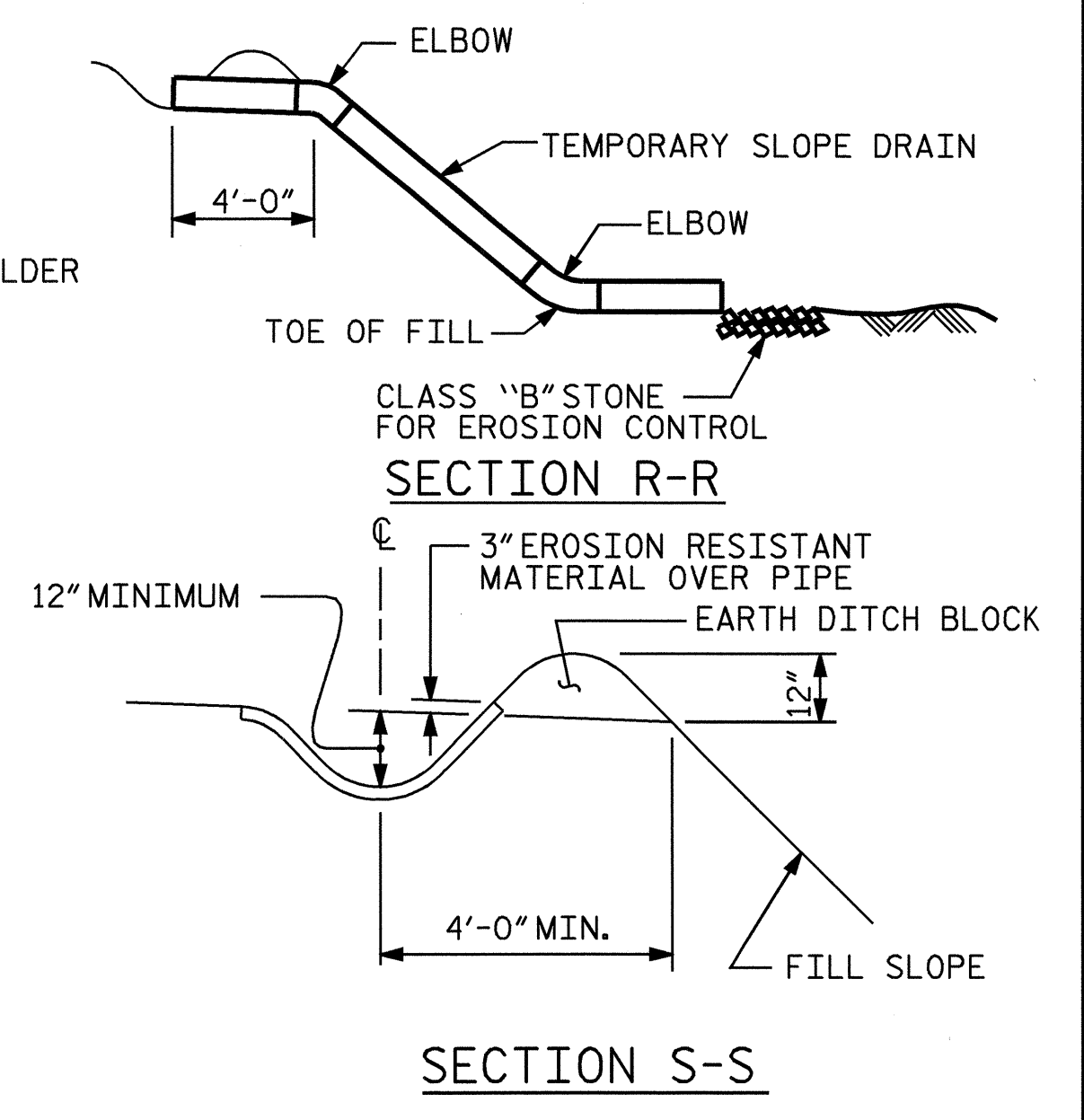


ELASTOMERIC CONCRETE	
END BENT NO.	ELASTOMERIC CONCRETE * (CU. FT.)
1	5.2
2	5.2
TOTAL	10.4

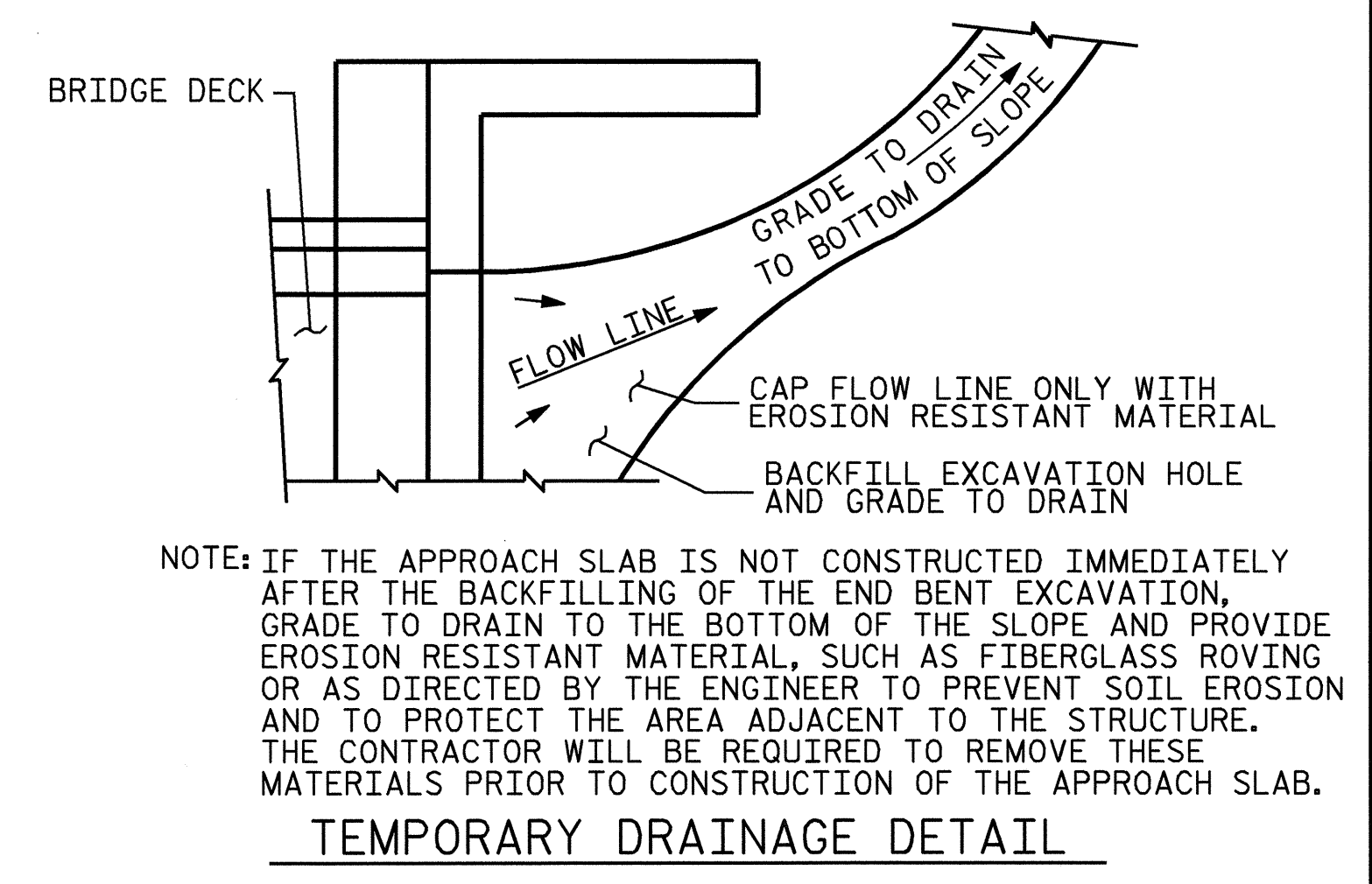
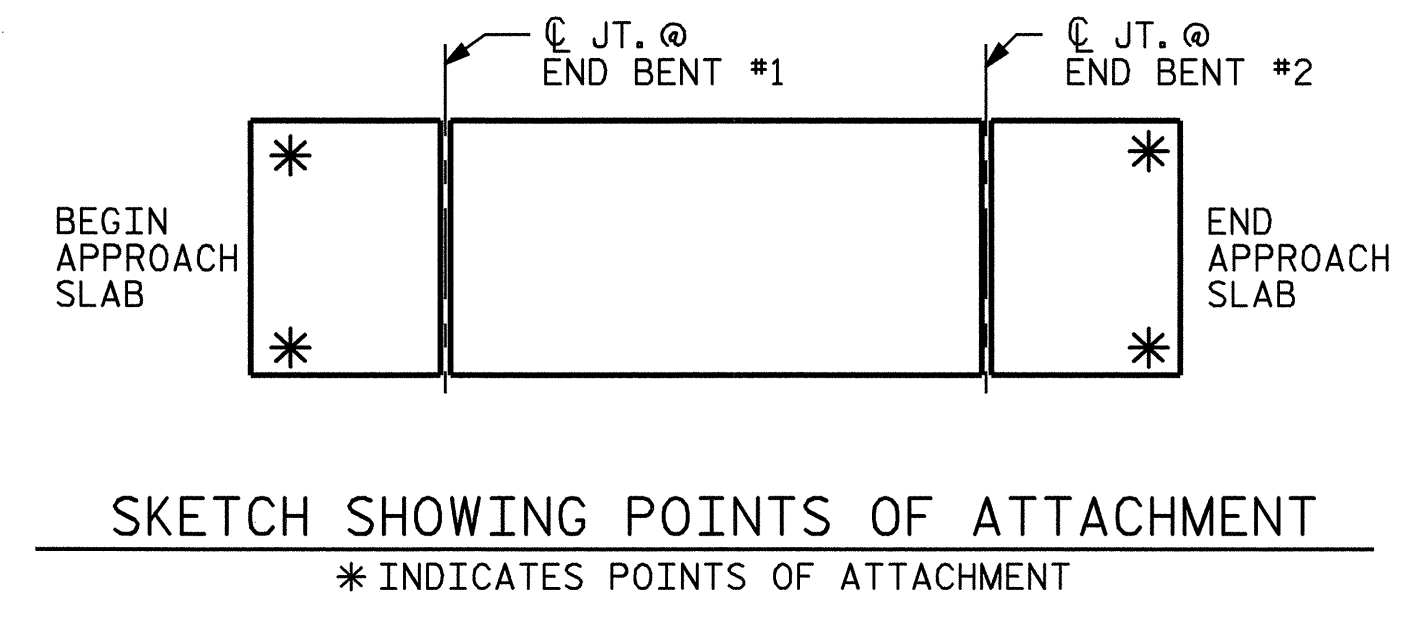
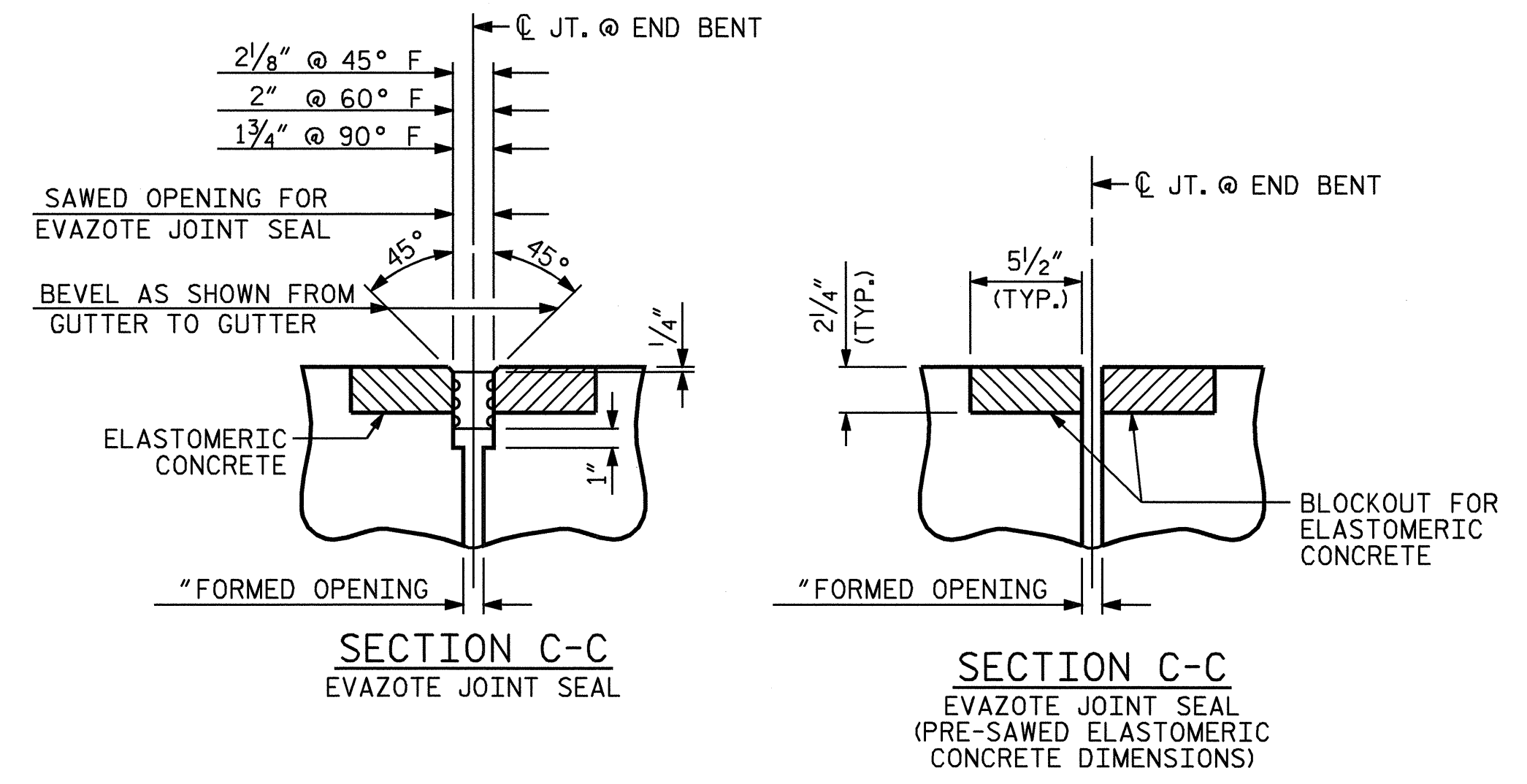
* BASED ON THE MINIMUM BLOCKOUT SHOWN.
 NOTE:- THE ELASTOMERIC CONCRETE WILL NOT BE A SEPERATE PAY ITEM BUT WILL BE INCLUDED IN THE PAY ITEM FOR "EVAZOTE JOINT SEALS."
 FOR "ELATOMERIC CONCRETE", SEE SPECIAL PROVISIONS.



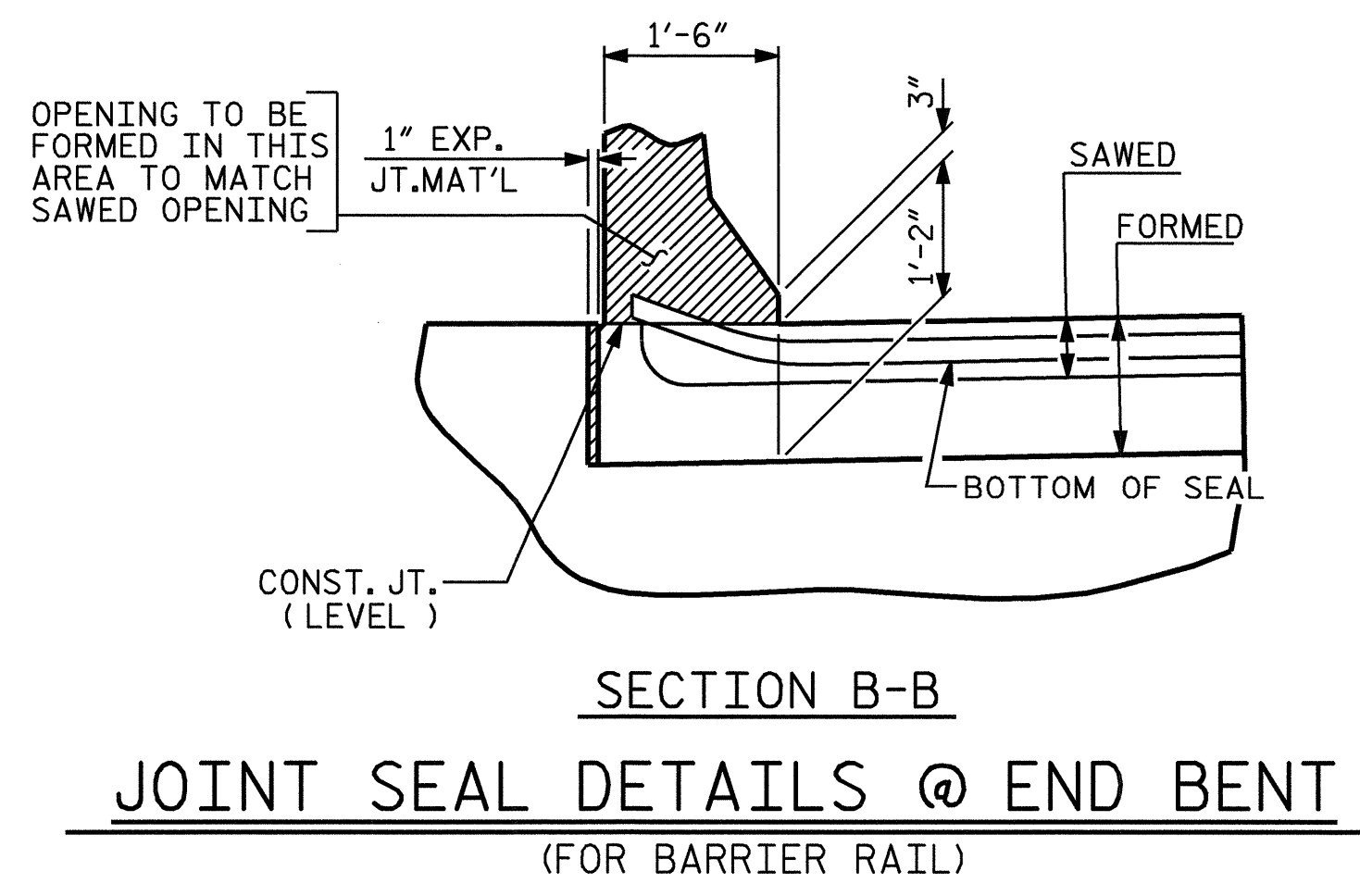
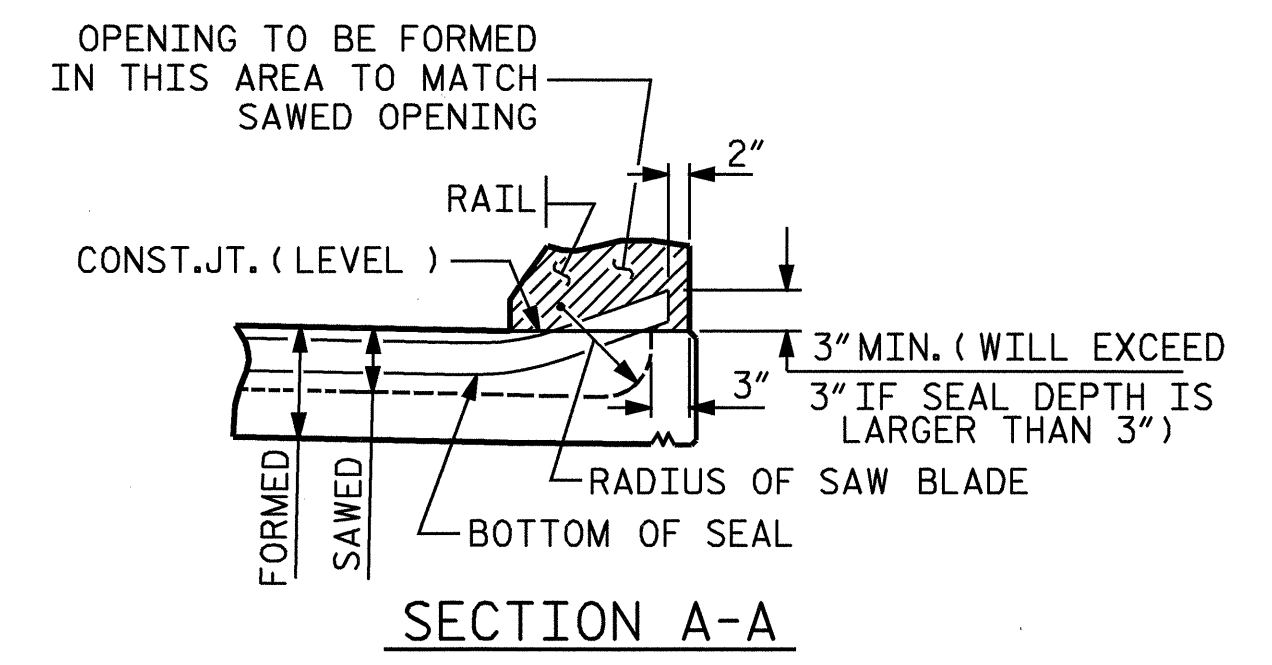
NOTE: IMMEDIATELY AFTER THE CONSTRUCTION OF THE APPROACH SLAB, THE CONTRACTOR SHALL PROVIDE TEMPORARY BERM AND SLOPE DRAIN. CONTRACTOR SHALL GRADE TO PIPE INLET AND PROVIDE EROSION RESISTANT MATERIAL AS SHOWN. THE EROSION RESISTANT MATERIAL SHALL BE EITHER 1) ASPHALT PLANT MIX, TYPE 1 OR TYPE 2, MIN. 2" DEPTH, 2) EROSION CONTROL MAT, OR 3) CONCRETE, AS DIRECTED BY THE ENGINEER. THE SLOPE DRAIN SHALL CONSIST OF A NON-PERFORATED TEMPORARY DRAINAGE PIPE, 12 INCHES IN DIAMETER.



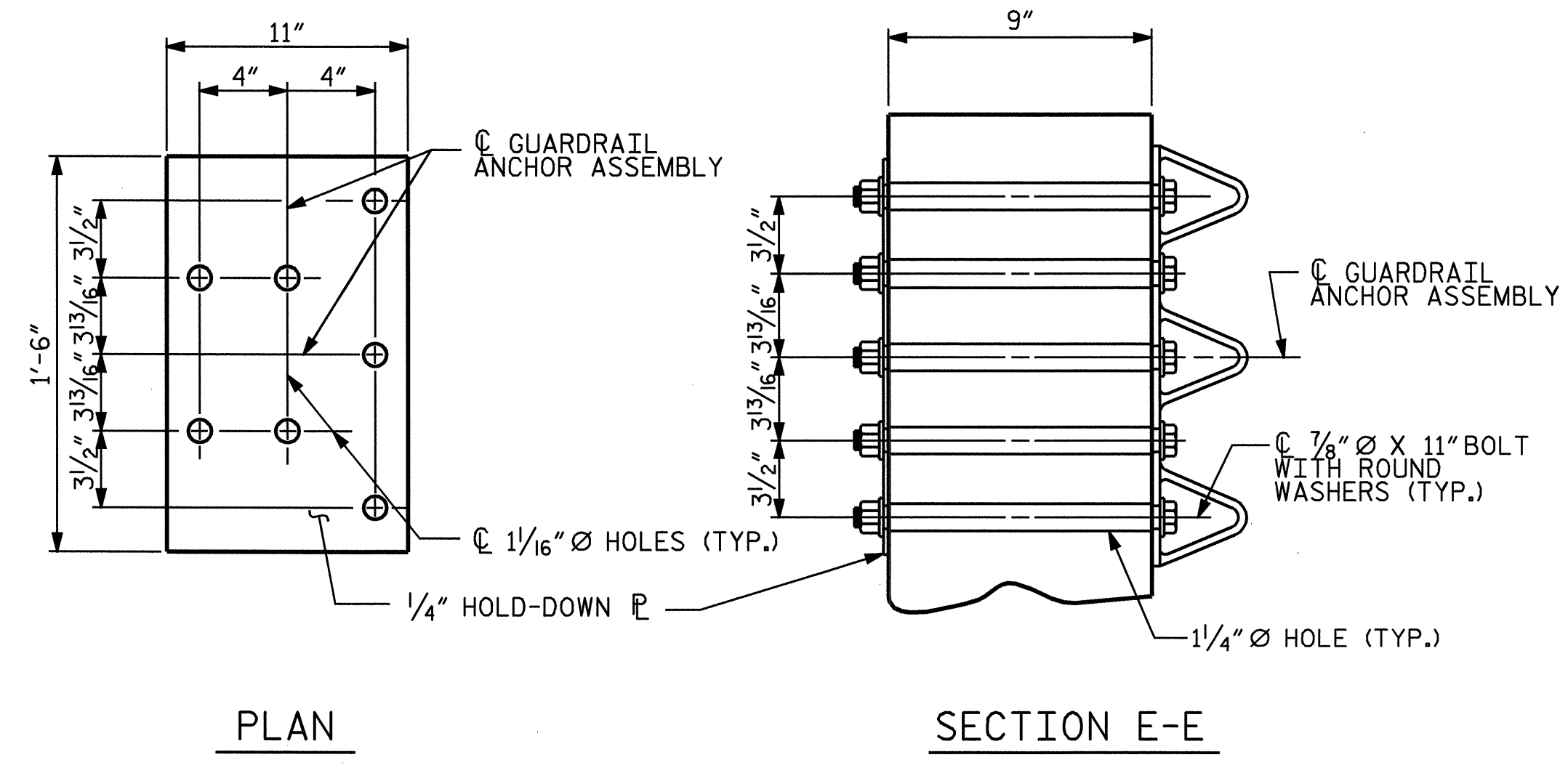
TEMPORARY BERM AND SLOPE DRAIN DETAILS



NOTE: IF THE APPROACH SLAB IS NOT CONSTRUCTED IMMEDIATELY AFTER THE BACKFILLING OF THE END BENT EXCAVATION, GRADE TO DRAIN TO THE BOTTOM OF THE SLOPE AND PROVIDE EROSION RESISTANT MATERIAL, SUCH AS FIBERGLASS ROVING OR AS DIRECTED BY THE ENGINEER TO PREVENT SOIL EROSION AND TO PROTECT THE AREA ADJACENT TO THE STRUCTURE. THE CONTRACTOR WILL BE REQUIRED TO REMOVE THESE MATERIALS PRIOR TO CONSTRUCTION OF THE APPROACH SLAB.

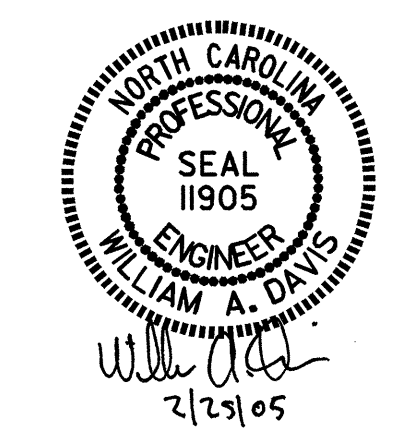


JOINT SEAL DETAILS @ END BENT (FOR BARRIER RAIL)



GUARDRAIL ANCHOR ASSEMBLY DETAILS

ASSEMBLED BY : J.G. KHARVA	DATE : 09/21/04
CHECKED BY : J.D. HAWK	DATE : 10/20/04
DRAWN BY : FCJ 11/88	REV. 8/16/99 MAB/LES
CHECKED BY : ARB 11/88	REV. 10/17/00 RWW/LES
	REV. 5/7/03 RWW/JTE



PROJECT NO. B-3875
MOORE COUNTY
 STATION: 17+70.00 -L-

STATE OF NORTH CAROLINA DEPARTMENT OF TRANSPORTATION RALEIGH				
STANDARD BRIDGE APPROACH SLAB DETAILS				
SHEET 3 OF 4				
REVISIONS				
NO.	BY:	DATE:	NO.	DATE:
1			3	
2			4	
				TOTAL SHEETS 33