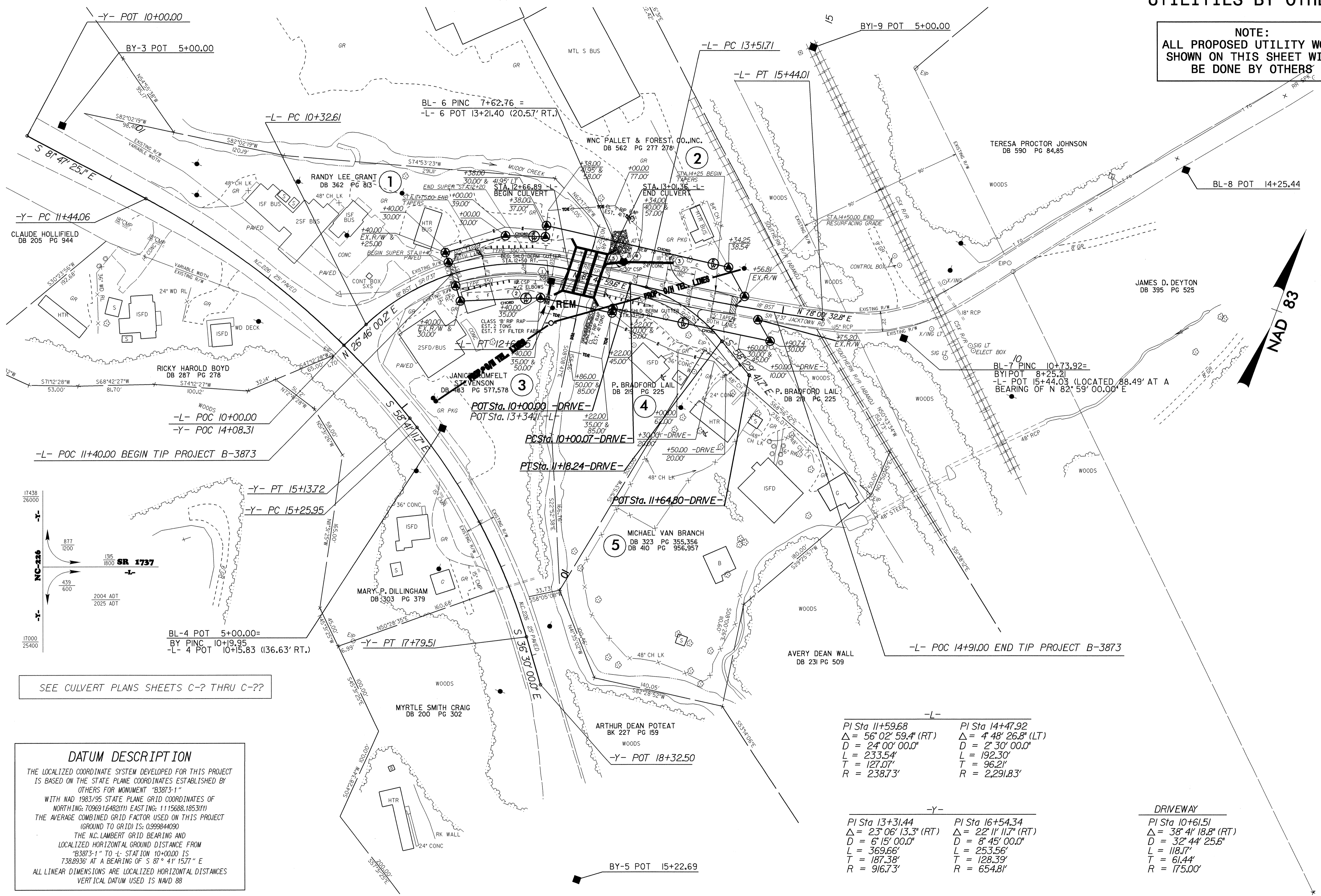


**UTILITIES BY OTHERS**

**NOTE:**  
ALL PROPOSED UTILITY WORK SHOWN ON THIS SHEET WILL BE DONE BY OTHERS



SEE CULVERT PLANS SHEETS C-? THRU C-??

**DATUM DESCRIPTION**  
 THE LOCALIZED COORDINATE SYSTEM DEVELOPED FOR THIS PROJECT IS BASED ON THE STATE PLANE COORDINATES ESTABLISHED BY OTHERS FOR MONUMENT "B3873-1"  
 WITH NAD 1983/95 STATE PLANE GRID COORDINATES OF NORTHING: 7096916482(11) EASTING: 11156881853(11)  
 THE AVERAGE COMBINED GRID FACTOR USED ON THIS PROJECT (GROUND TO GRID) IS: 0.999844090  
 THE N.C. LAMBERT GRID BEARING AND LOCALIZED HORIZONTAL GROUND DISTANCE FROM "B3873-1" TO -L- STATION 10+00.00 IS 738.8936' AT A BEARING OF S 87° 41' 15.77" E  
 ALL LINEAR DIMENSIONS ARE LOCALIZED HORIZONTAL DISTANCES VERTICAL DATUM USED IS NAVD 88

**-L-**  
 PI Sta 11+59.68 Δ = 56° 02' 59.4" (RT) D = 24' 00" 00.0" L = 233.54' T = 127.07' R = 238.73'  
 PI Sta 14+47.92 Δ = 4° 48' 26.8" (LT) D = 2' 30" 00.0" L = 192.30' T = 96.21' R = 2,291.83'

**-Y-**  
 PI Sta 13+31.44 Δ = 23° 06' 13.3" (RT) D = 6' 15" 00.0" L = 369.66' T = 187.38' R = 916.73'  
 PI Sta 16+54.34 Δ = 22° 11' 11.7" (RT) D = 8' 45" 00.0" L = 253.56' T = 128.39' R = 654.81'

**DRIVEWAY**  
 PI Sta 10+61.51 Δ = 38° 41' 18.8" (RT) D = 32' 44" 25.6" L = 118.17' T = 61.44' R = 175.00'

8/17/99  
 06-OCT-2004 09:43  
 R:\Utilities\Files\B-3873\4-U01-ut.psh.dgn  
 mbricht -E1-DB-21242