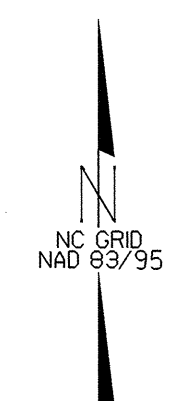
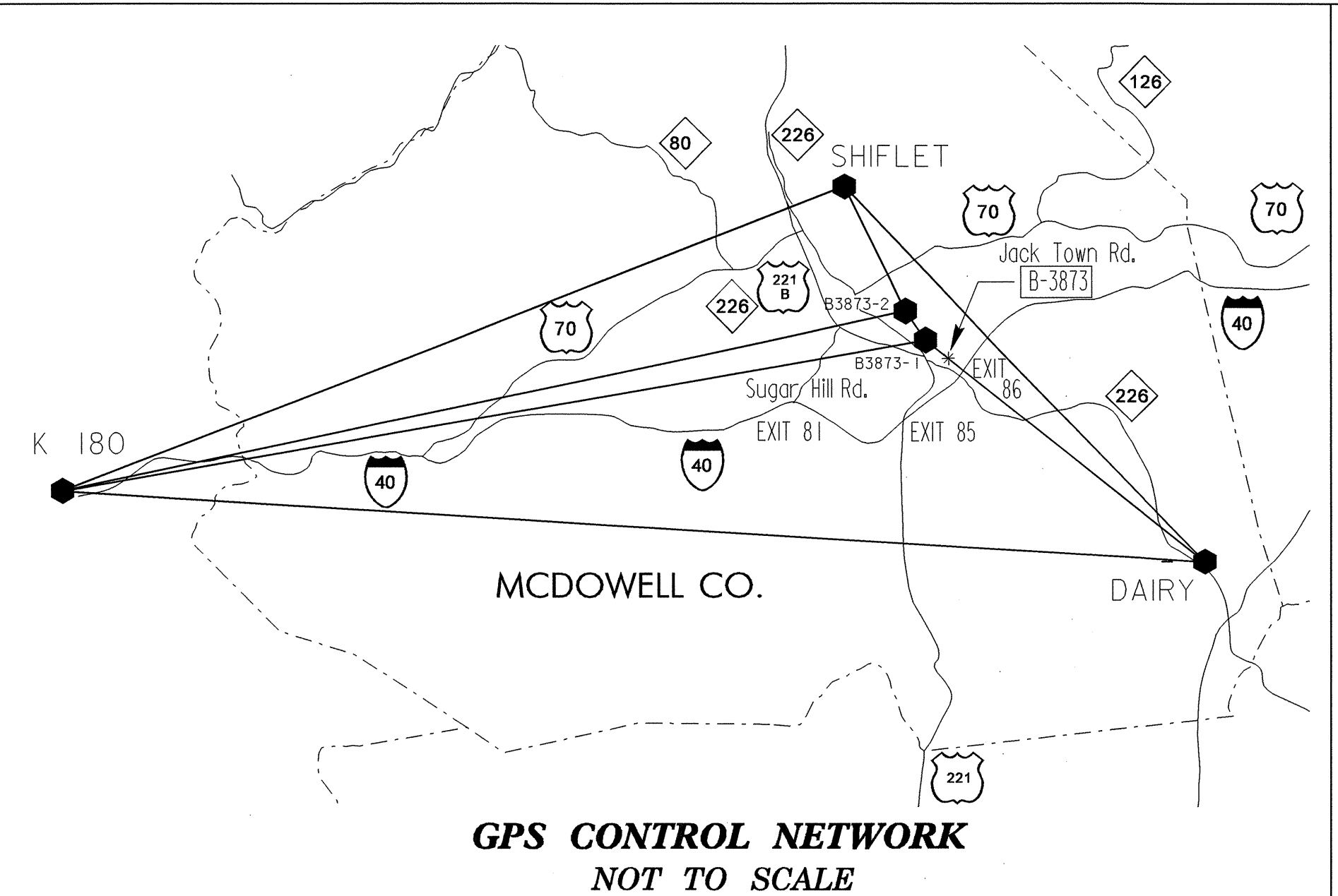


6/2/99

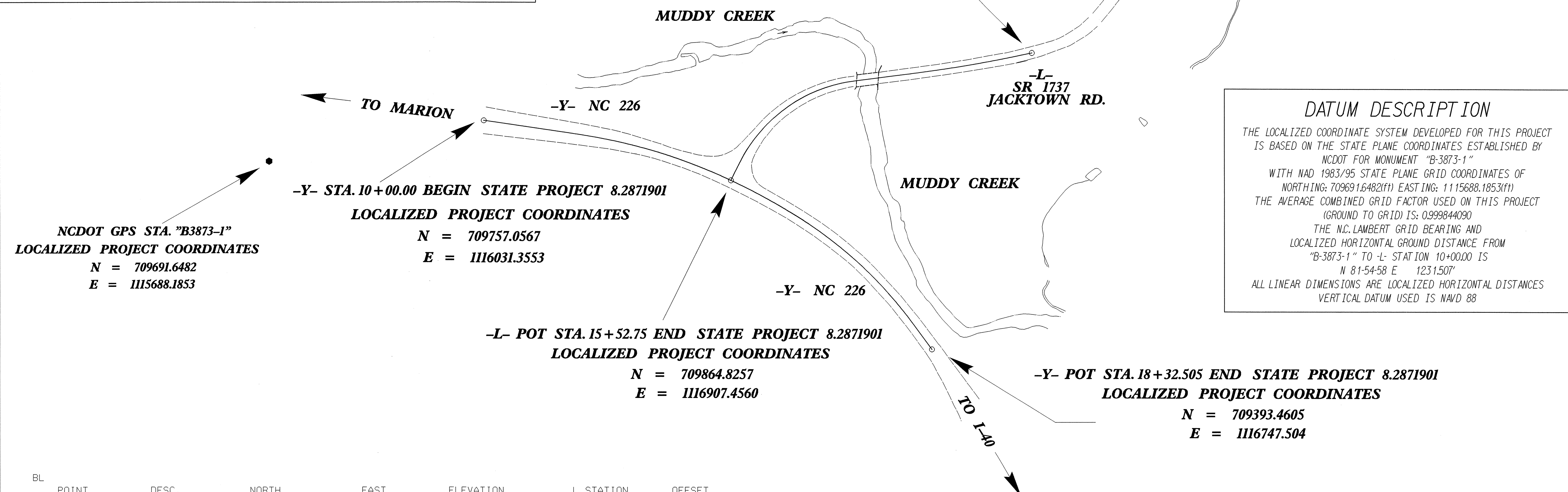
PROJECT REFERENCE NO.	SHEET NO.
B-3711	I-C
Location and Surveys	

# SURVEY CONTROL SHEET B-3873



\*\*\*\*\*  
 BM1 ELEVATION = 1275.01  
 N 709563 E 1116515  
 L STATION 10+00  
 S 41° 37' 49.2" E DIST 132.50  
 NAIL IN BASE OF 18" WHITE OAK  
 \*\*\*\*\*  
 BM2 ELEVATION = 1291.66  
 N 709870 E 1117034  
 L STATION 15+53  
 N 87° 47' 57.7" E DIST 126.94  
 CHISEL SQUARE IN BASE OF R/R SIGNAL  
 POLE \*2210  
 \*\*\*\*\*

**-L- STA. 10+00.00 BEGIN STATE PROJECT 8.2871901**  
**LOCALIZED PROJECT COORDINATES**  
 N = 709661.8368  
 E = 1116426.4773



**DATUM DESCRIPTION**  
 THE LOCALIZED COORDINATE SYSTEM DEVELOPED FOR THIS PROJECT IS BASED ON THE STATE PLANE COORDINATES ESTABLISHED BY NCDOT FOR MONUMENT "B-3873-1" WITH NAD 1983/95 STATE PLANE GRID COORDINATES OF NORTHING: 709691.6482(ft) EASTING: 1115688.1853(ft) THE AVERAGE COMBINED GRID FACTOR USED ON THIS PROJECT (GROUND TO GRID) IS: 0.999844090 THE N.C. LAMBERT GRID BEARING AND LOCALIZED HORIZONTAL GROUND DISTANCE FROM "B-3873-1" TO -L- STATION 10+00.00 IS N 81-54-58 E 1231.507' ALL LINEAR DIMENSIONS ARE LOCALIZED HORIZONTAL DISTANCES VERTICAL DATUM USED IS NAVD 88

**NCDOT GPS STA. "B3873-1"**  
**LOCALIZED PROJECT COORDINATES**  
 N = 709691.6482  
 E = 1115688.1853

**-Y- STA. 10+00.00 BEGIN STATE PROJECT 8.2871901**  
**LOCALIZED PROJECT COORDINATES**  
 N = 709757.0567  
 E = 1116031.3553

**-L- POT STA. 15+52.75 END STATE PROJECT 8.2871901**  
**LOCALIZED PROJECT COORDINATES**  
 N = 709864.8257  
 E = 1116907.4560

**-Y- POT STA. 18+32.505 END STATE PROJECT 8.2871901**  
**LOCALIZED PROJECT COORDINATES**  
 N = 709393.4605  
 E = 1116747.504

BL	POINT	DESC.	NORTH	EAST	ELEVATION	L STATION	OFFSET
4	BL-4		709614.4349	1116555.5924	1257.65	10+15.83	136.63 RT
6	BL-6		709847.6162	1116676.7079	1263.77	13+21.40	20.57 LT
7	BL-7		709873.8248	1116986.7580	1290.14		OUTSIDE PROJECT LIMITS
8	BL-8		710146.0064	1117209.2211	1303.27		OUTSIDE PROJECT LIMITS

BY	POINT	DESC.	NORTH	EAST	ELEVATION	Y STATION	OFFSET
3	BY-3		709780.0090	1116062.7089	1260.35	10+27.75	27.19 LT
Y4	BL-4		709614.4349	1116555.5924	1257.65	15+42.95	20.78 LT
5	BY-5		709210.4702	1116854.8546	1272.36		OUTSIDE PROJECT LIMITS

BY1	POINT	DESC.	NORTH	EAST	ELEVATION	L STATION	OFFSET
9	BY1-9		710132.5989	1116789.7909	1296.06	14+86.05	285.73 LT
Y7	BL-7		709873.8248	1116986.7580	1290.14		OUTSIDE PROJECT LIMITS

**NOTES:**  
 THE CONTROL DATA FOR THIS PROJECT CAN BE FOUND ELECTRONICALLY BY SELECTING PROJECT CONTROL DATA AT:  
[HTTP://WWW.DOH.DOT.STATE.NC.US/PRECONSTRUCT/HIGHWAY/LOCATION/PROJECT](http://www.doh.dot.state.nc.us/preconstruct/highway/location/project)  
 THE FILE TO BE FOUND IS AS FOLLOWS:  
 B3873\_LS\_CONTROL\_040802.TXT  
 SITE CALIBRATION INFORMATION HAS NOT BEEN PROVIDED FOR THIS PROJECT. IF FURTHER INFORMATION IS NEEDED, PLEASE CONTACT THE LOCATION AND SURVEYS UNIT.  
 • INDICATES GEODETIC CONTROL MONUMENTS USED OR SET FOR HORIZONTAL PROJECT CONTROL BY THE NCDOT LOCATION AND SURVEYS UNIT.  
 PROJECT CONTROL ESTABLISHED USING GLOBAL POSITIONING SYSTEM.

NOTE: DRAWING NOT TO SCALE