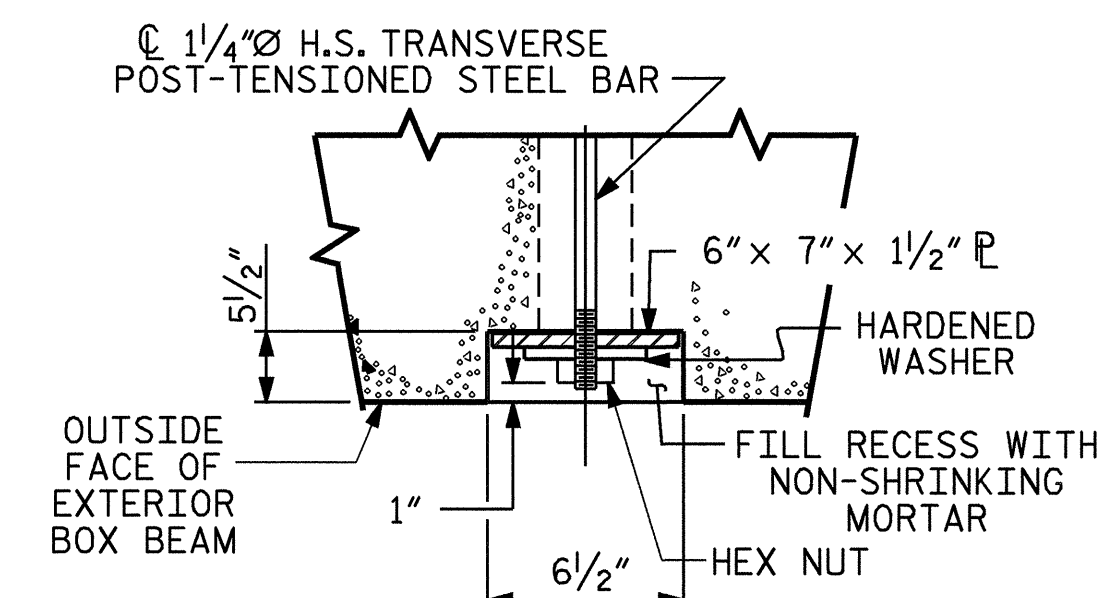
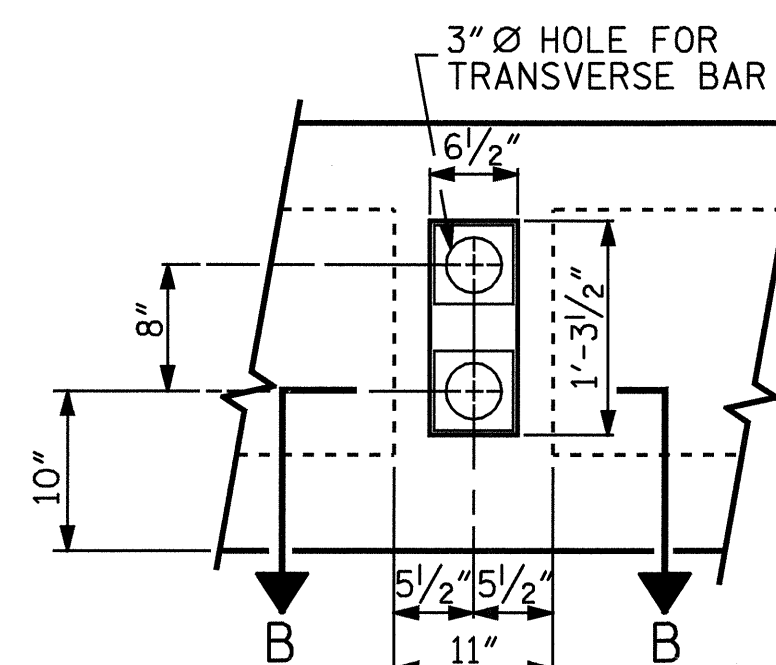


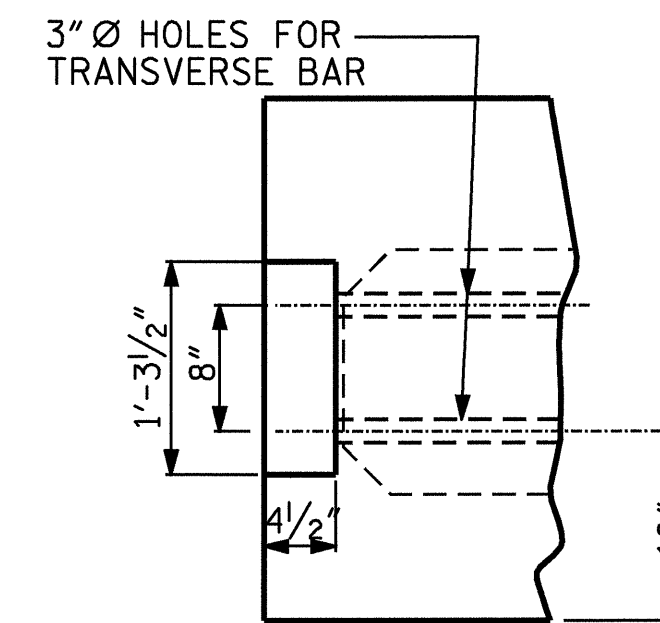
BRIDGE TYPICAL SECTION



SECTION B-B



ELEVATION VIEW

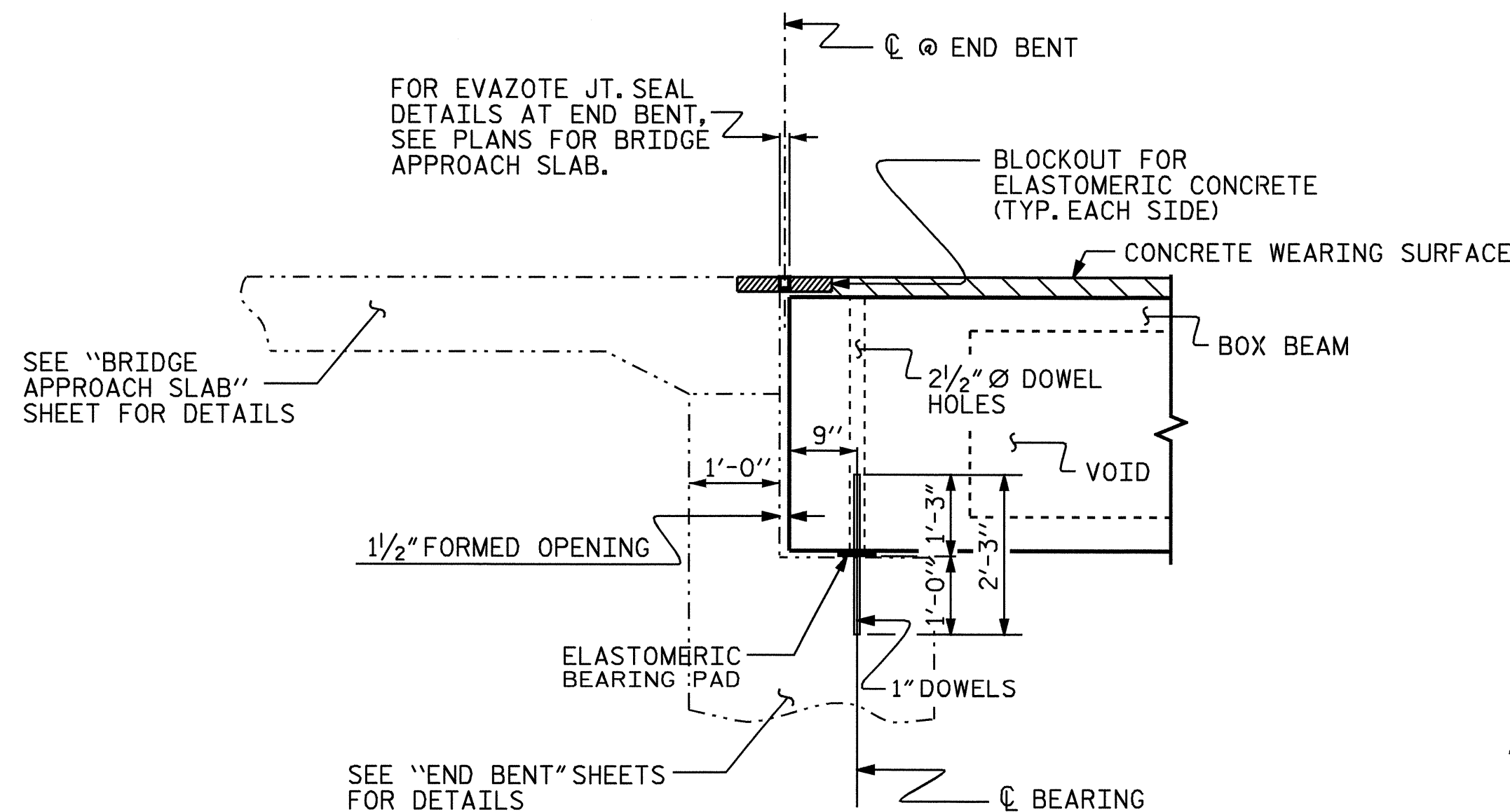


PART SECTION AT RECESS

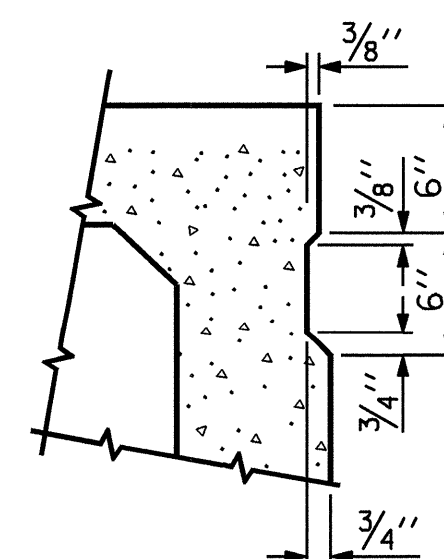
ALL OF THE TRANSVERSE POST-TENSIONING ASSEMBLY, CONSISTING OF THE POST TENSION STEEL BAR, ANCHOR PLATE, HARDENED WASHER AND THE HEX NUT SHALL BE GALVANIZED.

AFTER THE POST-TENSIONED STEEL BARS ARE TIGHTENED, THEY SHALL BE CUT TO RECESS WITHIN 1" OF THE OUTSIDE FACE OF EXTERIOR BOX BEAM.

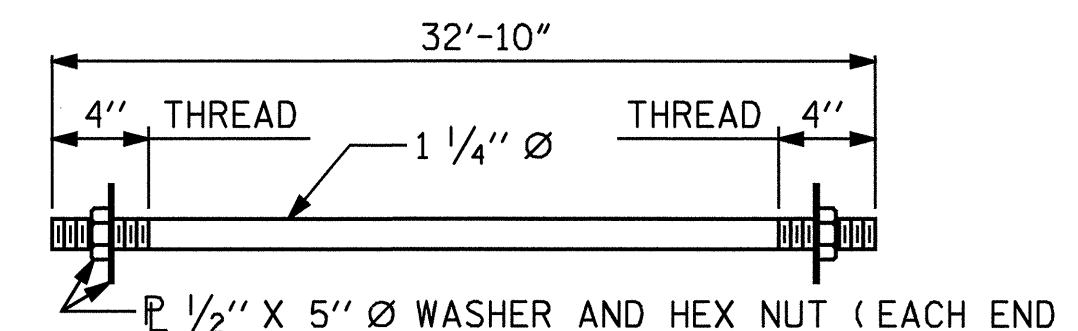
DOUBLE-GROUTED RECESS AT END OF POST-TENSIONED STEEL BAR FOR BOX BEAMS



SECTION AT END BENT



SHEAR KEY DETAIL
NOTE: OMIT SHEAR KEY ON OUTSIDE FACE OF EXTERIOR BOX BEAM.



1 1/4" TIE ROD ASSEMBLY
(8 COMPLETE ASSEMBLIES REQUIRED)

POST-TENSIONED STEEL BAR DIAMETER (in)	1/4
AREA (in ² in)	1.25
ULTIMATE STRESS f _{pu} (ksi)	150
MAX. JACKING FORCE (kips)	150
DESIGN PRESTRESSING FORCE (kips)	112.5
BLACK POLYETHYLENE PIPE (in) (SEE NOTE)	3
ANCHOR PLATE SIZE (in x in x in)	6 x 7 x 1/2

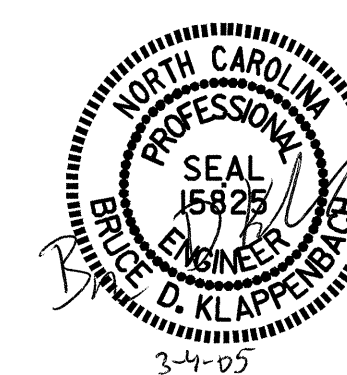
NOTE : FOR BLACK POLYETHYLENE PIPE, SEE SPECIAL PROVISIONS FOR PRESTRESSED CONCRETE BOX BEAM.

PROJECT NO. B-4180
MACON COUNTY
STATION: 17+06.00 -L-

SHEET 1 OF 5

STATE OF NORTH CAROLINA
DEPARTMENT OF TRANSPORTATION
RALEIGH

3'-0" X 2'-3" PRESTRESSED CONCRETE BOX BEAM UNIT



REVISIONS						SHEET NO.
NO.	BY:	DATE:	NO.	BY:	DATE:	S-4
1			3			TOTAL SHEETS
2			4			18

DRAWN BY : J.B. WILSON DATE : 1/18/05
CHECKED BY : D.A. GLADDEN DATE : 2/9/05