

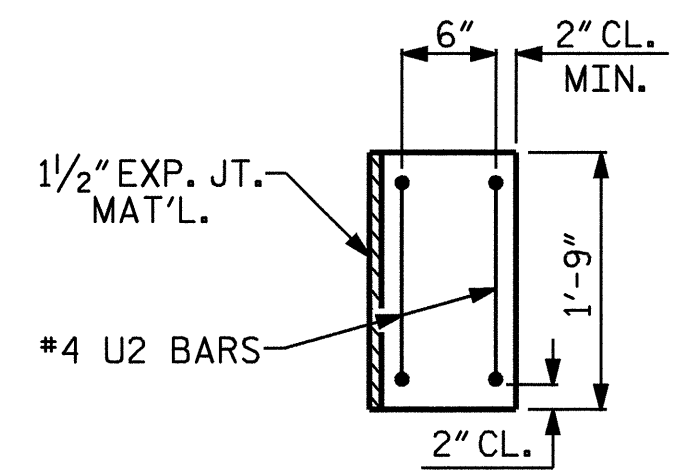
NOTES

STIRRUPS IN CAP MAY BE SHIFTED AS NECESSARY TO CLEAR DOWELS.

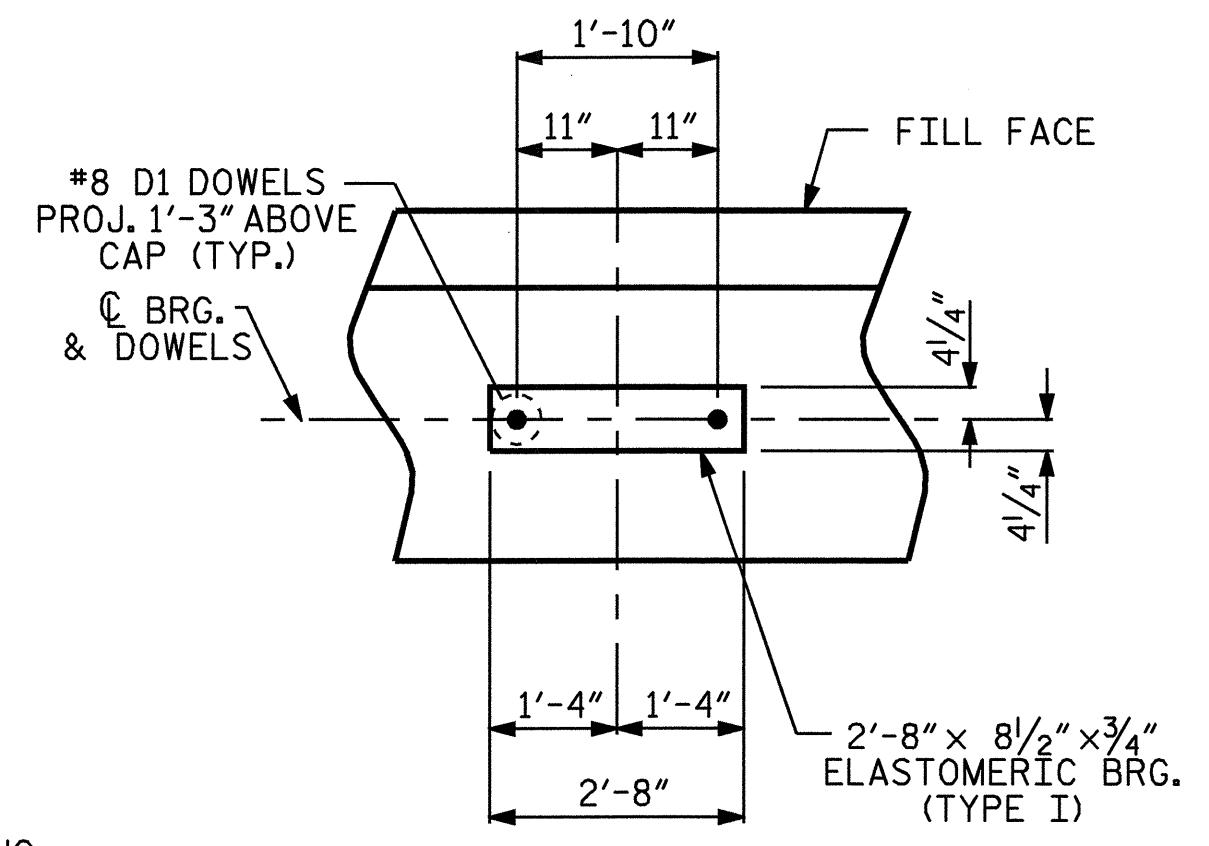
THE LATERAL GUIDE AT EACH END OF THE CAP IS NOT TO BE POURED UNTIL AFTER THE BOX BEAM UNITS ARE IN PLACE.

THE CONTRACTOR SHALL PROVIDE FOR INSTALLATION OF THE 4" DIAMETER DRAIN PIPE THROUGH THE WING WALL AS REQUIRED FOR REINFORCED BRIDGE APPROACH FILLS, SEE THE ROADWAY PLANS. REINFORCING STEEL IN THE WING WALL MAY BE SHIFTED AS NECESSARY TO CLEAR THE DRAIN PIPE.

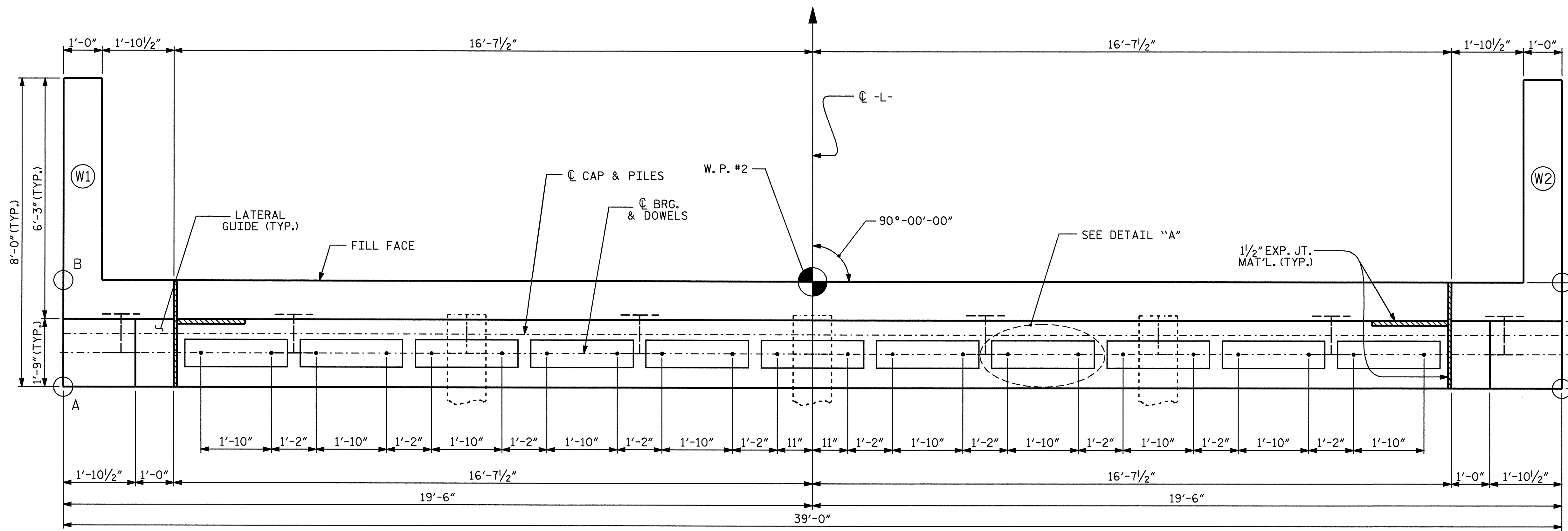
FOR EPOXY PROTECTIVE COATING, SEE SPECIAL PROVISIONS.



LATERAL GUIDE



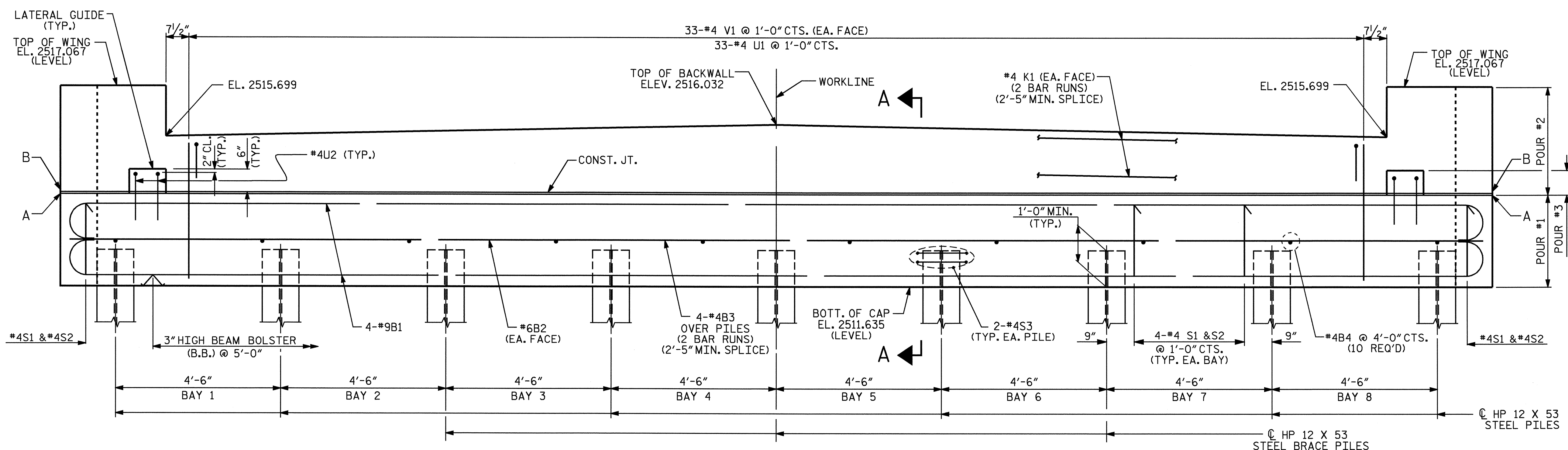
DETAIL "A"



PLAN

ELEVATIONS OF NOTED POINTS:

POINT "A"	= 2514.135
POINT "B"	= 2514.187



ELEVATION

PROJECT NO. B-4180
MACON COUNTY
 STATION: 17+06.00 -L-

SHEET 1 OF 3

STATE OF NORTH CAROLINA
 DEPARTMENT OF TRANSPORTATION
 RALEIGH

**SUBSTRUCTURE
 END BENT #2**

REVISIONS						SHEET NO.	
NO.	BY:	DATE:	NO.	BY:	DATE:	S-12	
1			3			TOTAL SHEETS	
2			4			18	

DRAWN BY : M. G. SHAIKH DATE : 01-13-05
 CHECKED BY : J. B. WILSON DATE : 01-20-05

