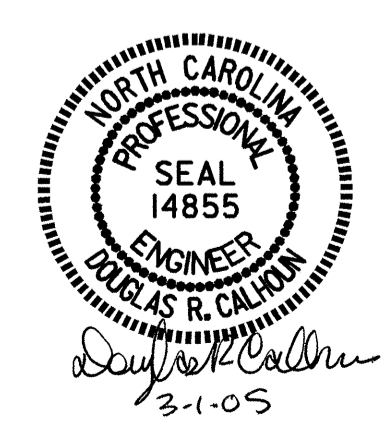
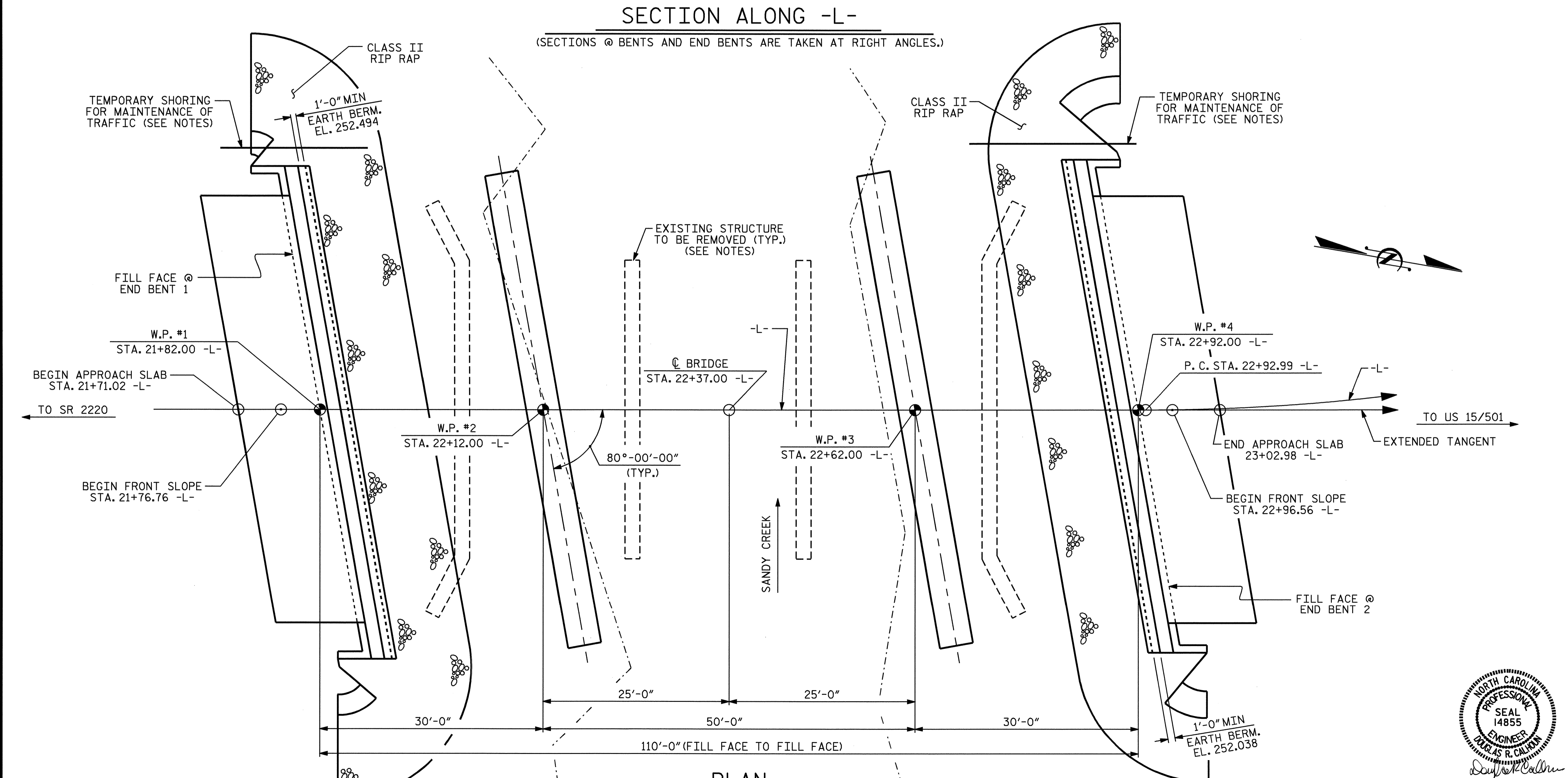
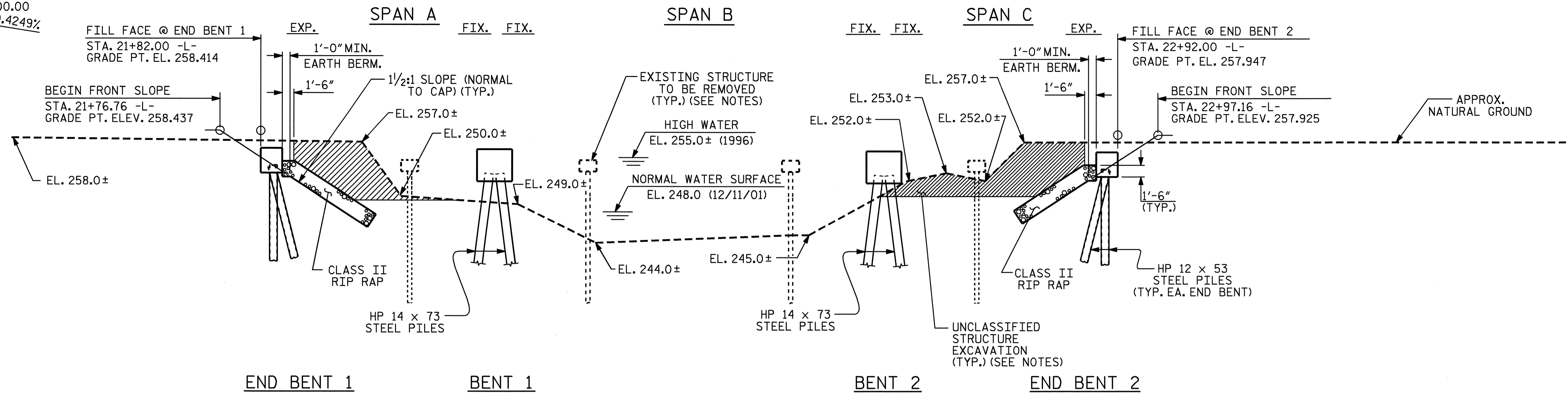


GRADE DATA -L-

P.I. = 17+90.00 -L-
EL. = 260.080
V.C. = 600.00
0.4681% / -0.4249%

NOTES :
FOR NOTES, SEE SHEETS 2 OF 3 & 3 OF 3.

260
250
240
230



PROJECT NO. B-3450
DURHAM COUNTY
STATION: 22+37.00 -L-

SHEET 1 OF 3 REPLACES BRIDGE NO. 122

STATE OF NORTH CAROLINA
DEPARTMENT OF TRANSPORTATION
RALEIGH
GENERAL DRAWING
BRIDGE ON SR 1116 OVER
SANDY CREEK BETWEEN
SR 2220 AND US 15/501

REVISIONS						SHEET NO.	
NO.	BY:	DATE:	NO.	BY:	DATE:	S-26	
1			3			TOTAL SHEETS 53	
2			4				

DRAWN BY : A.L.M./T.A.H. DATE : 8/06/02
CHECKED BY : K.McCAULEY DATE : 8/07/02