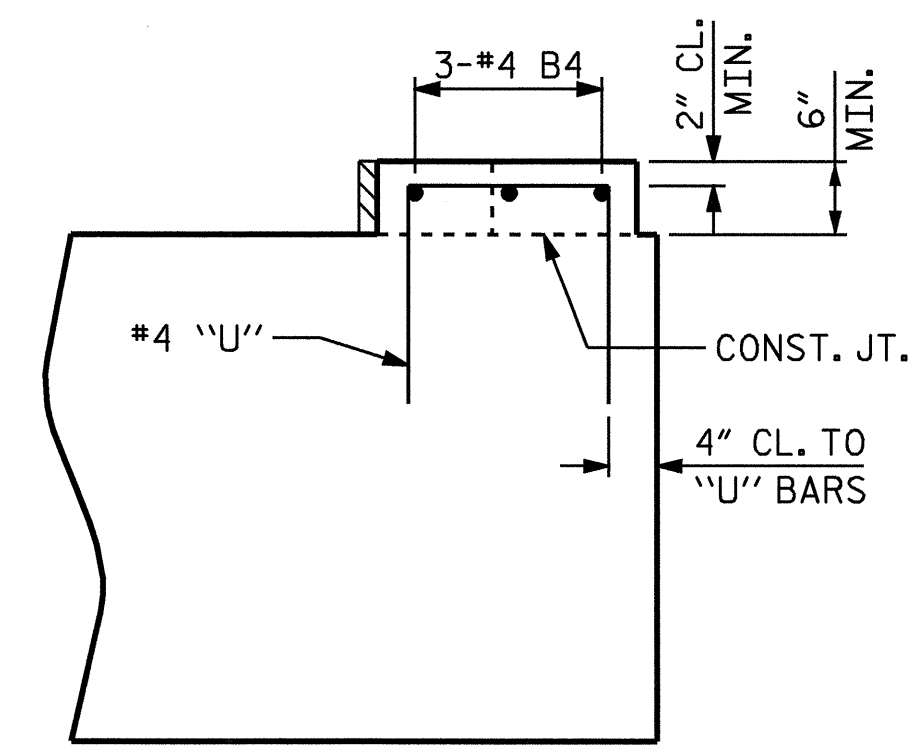


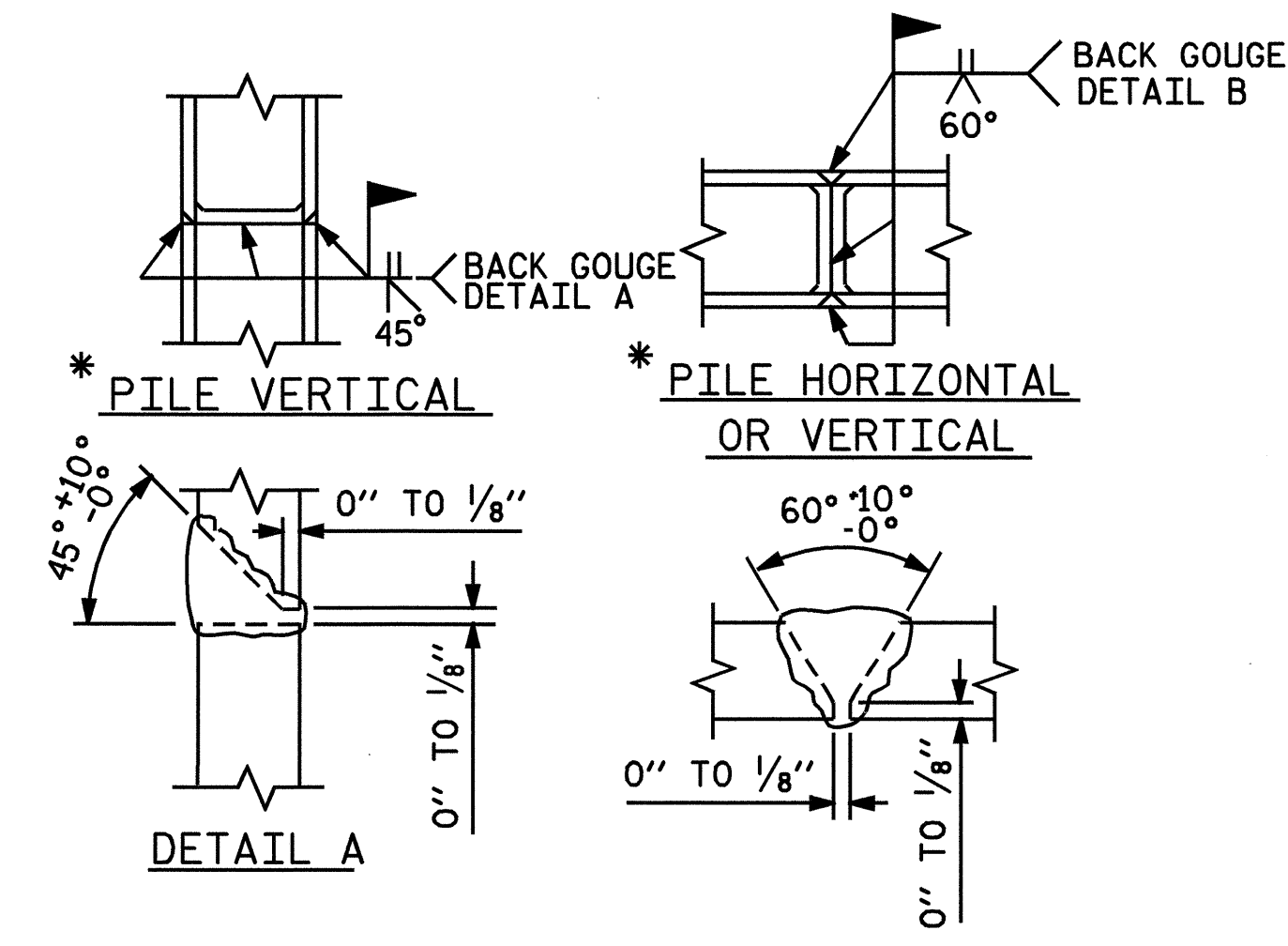
PLAN



ELEVATION

LATERAL GUIDE DETAILS

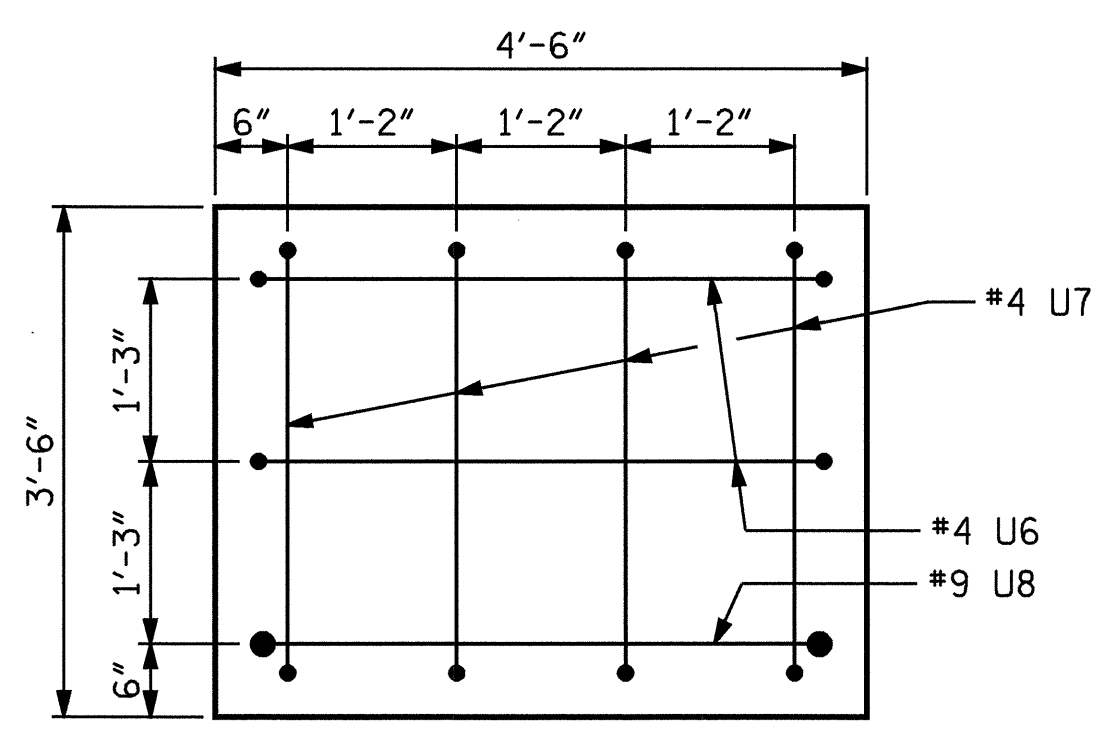
RIGHT SIDE SHOWN, LEFT SIDE SIMILAR



PILE SPLICE DETAILS

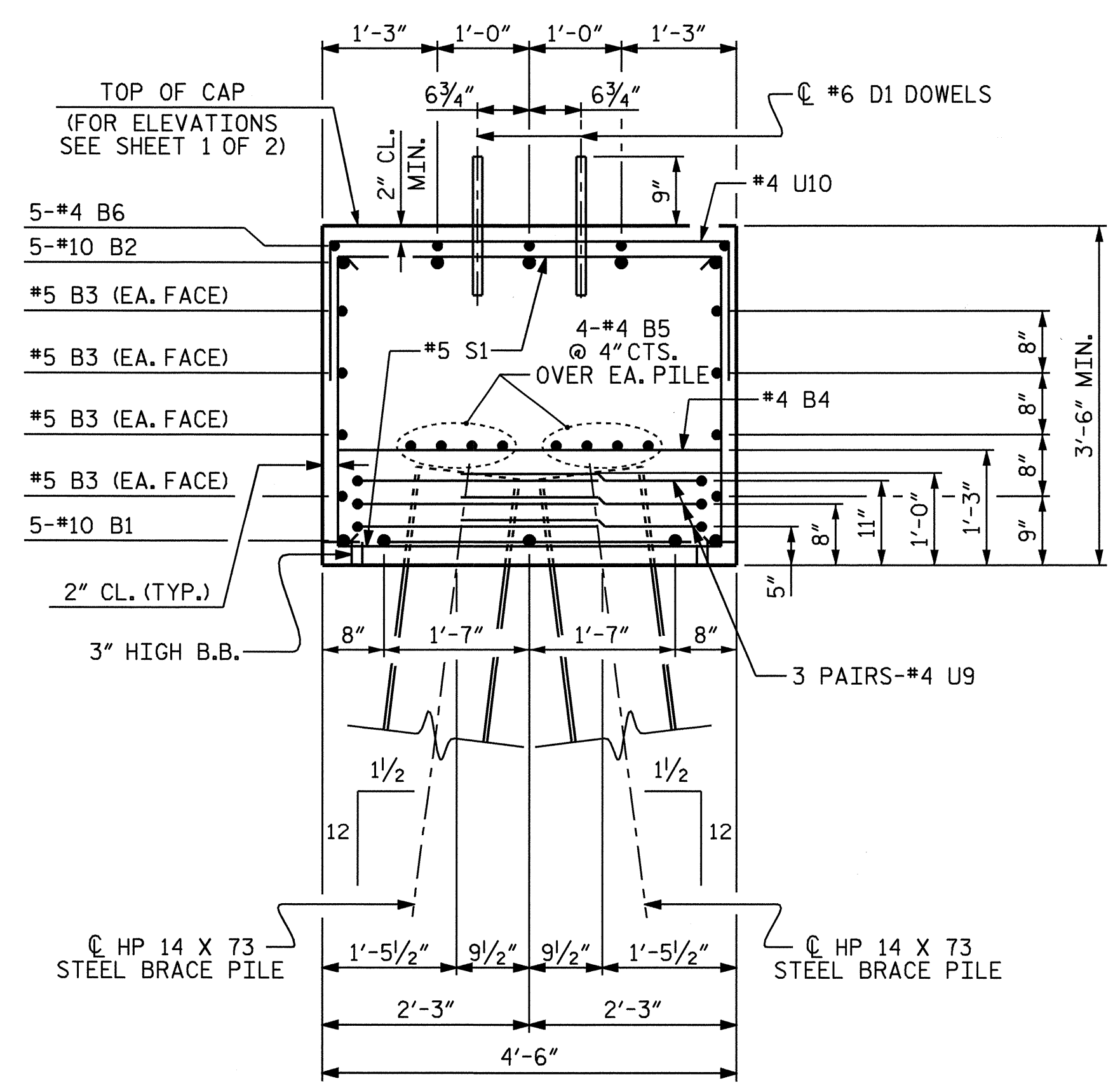
NOTES

STIRRUPS IN CAP MAY BE SHIFTED AS NECESSARY TO CLEAR #6 DOWELS AND REINFORCING STEEL.
 LATERAL GUIDE AT END OF CAP IS NOT TO BE POURED UNTIL AFTER THE CORED SLAB UNITS ARE IN PLACE.
 THE STEEL PILES SHALL BE GALVANIZED IN ACCORDANCE WITH SECTION 1076 OF THE STANDARD SPECIFICATIONS. FOR GALVANIZING STEEL PILES, SEE SPECIAL PROVISIONS.



VIEW X-X

SHOWING REINFORCING STEEL AT THE END OF THE CAP



SECTION A-A

BAR TYPES

U10 4'-2"
 U9 1'-8"
 U8 4'-0"
 U7 3'-0"
 U6 4'-0"
 U5 1'-4"
 U4 1'-2"
 U3 1'-0"
 U2 10"
 U1 8"

BENT 2

BAR	NO	SIZE	TYPE	LENGTH	WEIGHT
B1	10	10	STR	35'-11	1545
B2	10	10	1	38'-11	1675
B3	16	5	STR	33'-6	559
B4	22	4	STR	4'-2	61
B5	24	4	STR	22'-11	367
B6	5	4	STR	30'-0	100
D1	80	6	STR	1'-6	180
S1	60	5	2	11'-4	709
U1	2	4	3	3'-8	5
U2	2	4	3	3'-10	5
U3	2	4	3	4'-0	5
U4	2	4	3	4'-2	6
U5	2	4	3	4'-4	6
U6	4	4	3	7'-0	19
U7	8	4	3	6'-0	32
U8	2	9	3	11'-4	77
U9	48	4	3	7'-0	224
U10	20	4	3	7'-2	96
REINFORCING STEEL				LBS.	5671

CLASS A CONCRETE BREAKDOWN

ITEM	UNIT	AMOUNT
POUR 1 (CAP)	C.Y.	41.1
POUR 2 (LATERAL GUIDE)	C.Y.	0.2
TOTAL CLASS A CONCRETE	C.Y.	41.3

HP 14 X 73 STEEL PILES NO. 16 LIN. FT. 480

GALVANIZING STEEL PILES LUMP SUM

PROJECT NO. B-3450
 DURHAM COUNTY
 STATION: 22+37.00 -L-

SHEET 2 OF 2

STATE OF NORTH CAROLINA
 DEPARTMENT OF TRANSPORTATION
 RALEIGH

SUBSTRUCTURE
 BENT 2



REVISIONS						SHEET NO.	
NO.	BY:	DATE:	NO.	BY:	DATE:	S-47	
1			3			TOTAL SHEETS	
2			4			53	

DRAWN BY : T. A. HARRIS DATE : 12/28/04
 CHECKED BY : K. P. SEDAI DATE : 12/27/03