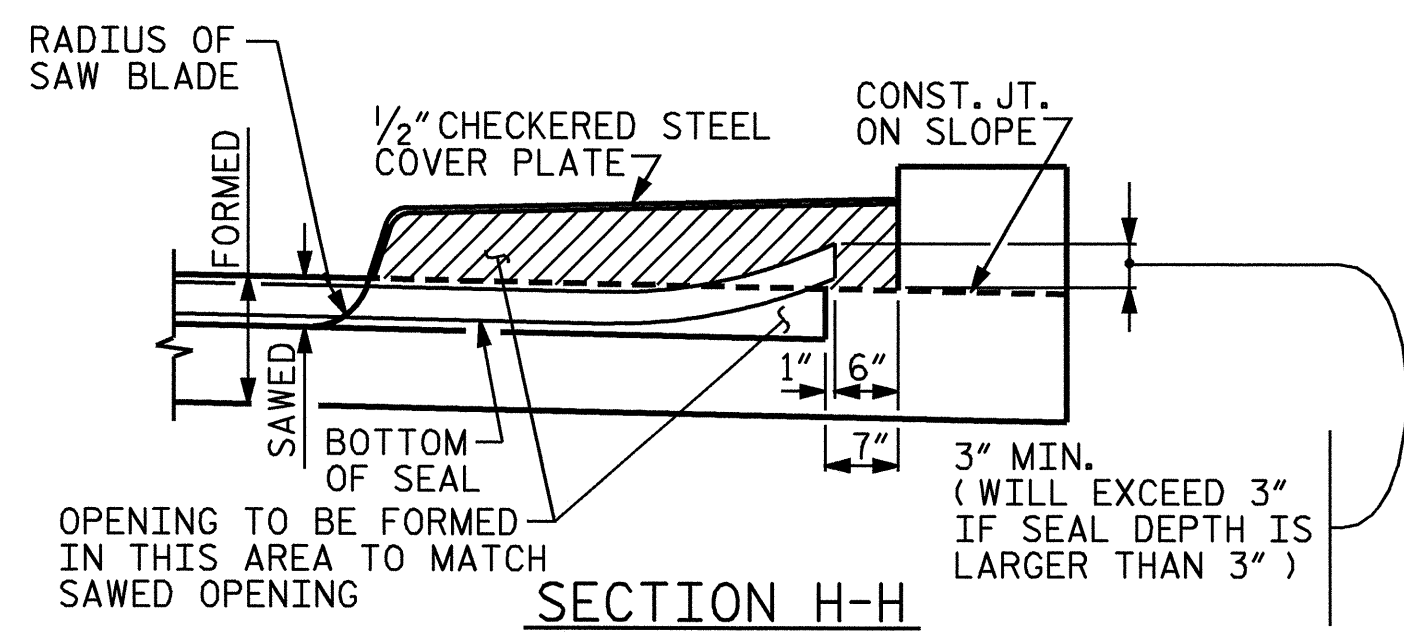
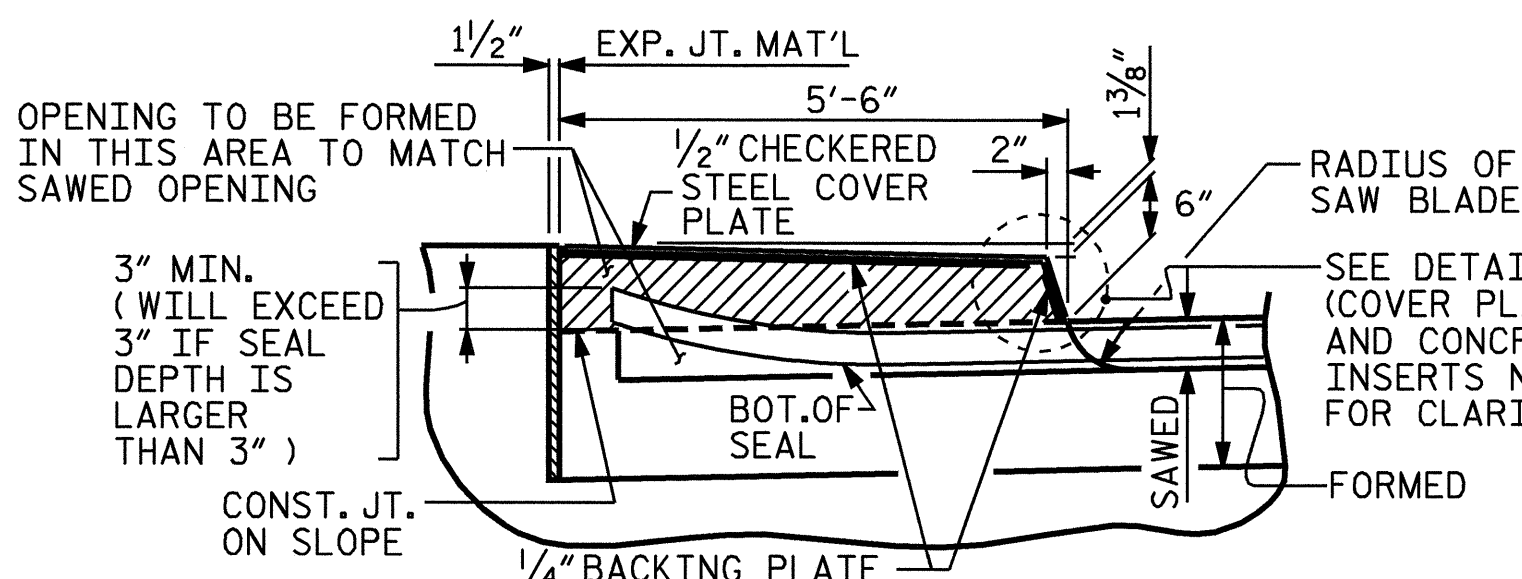


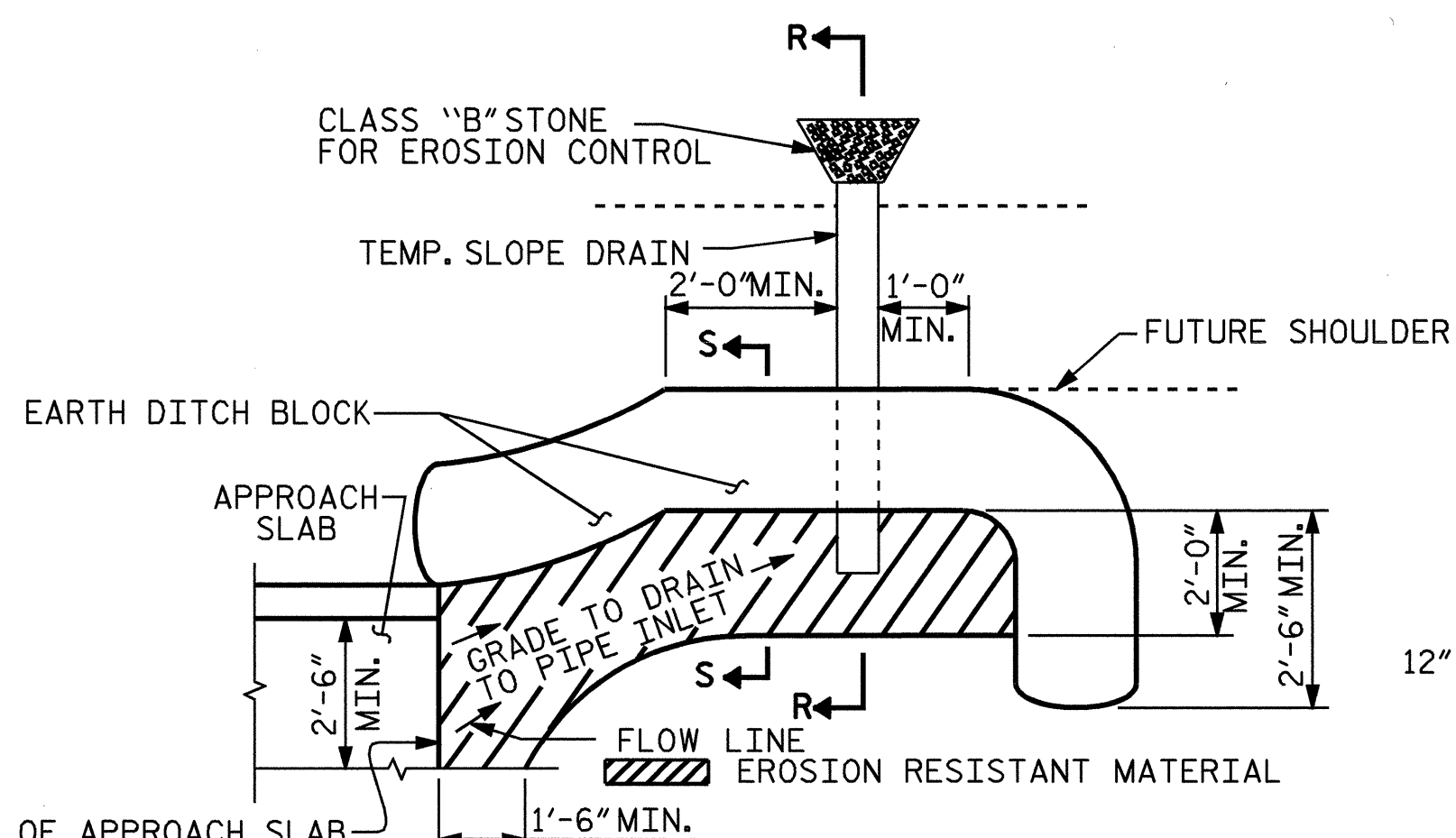
PLAN OF EVAZOTE JOINT SEAL WITH COVER



SECTION H-H

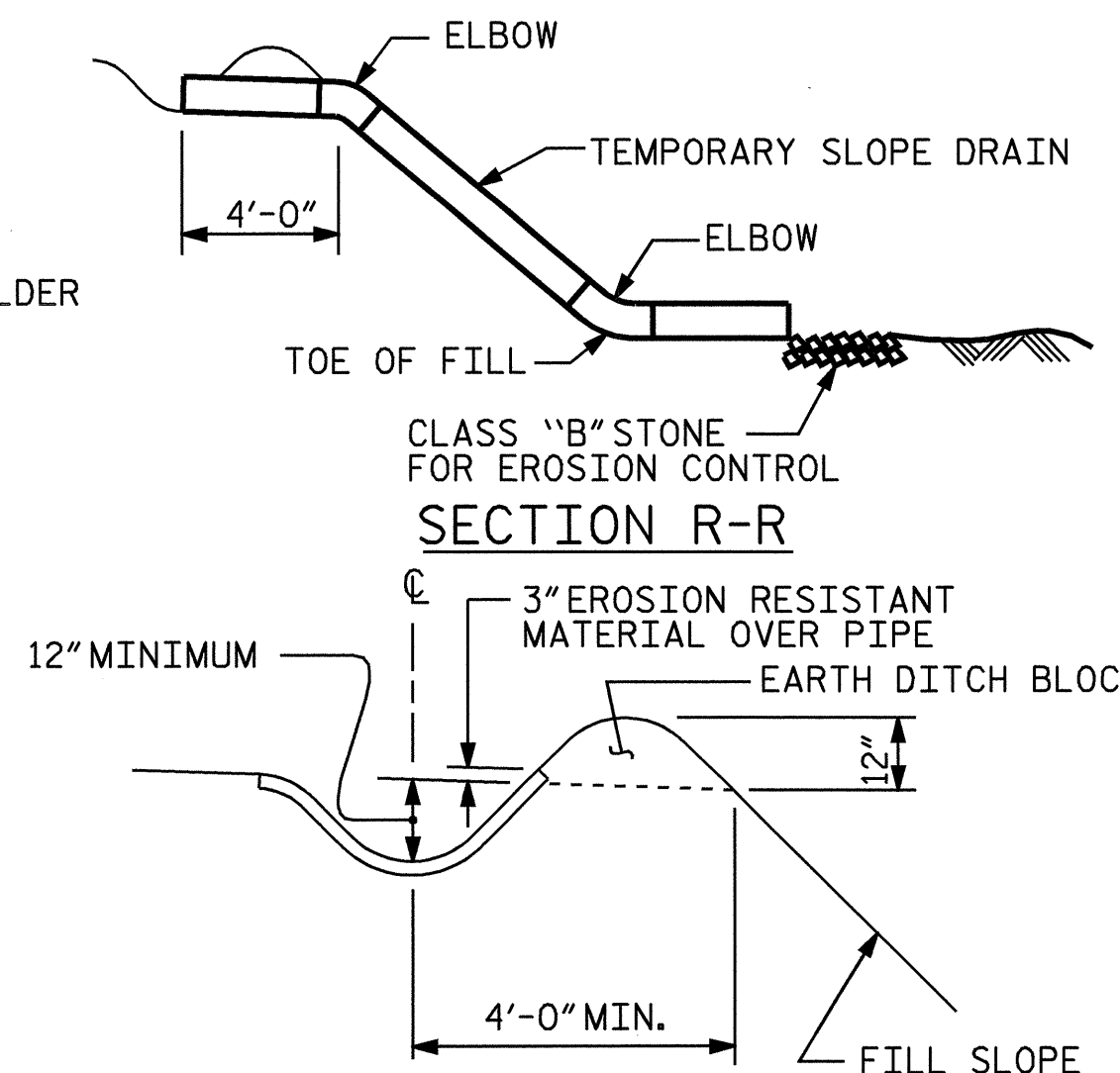


SECTION I-I



PLAN VIEW

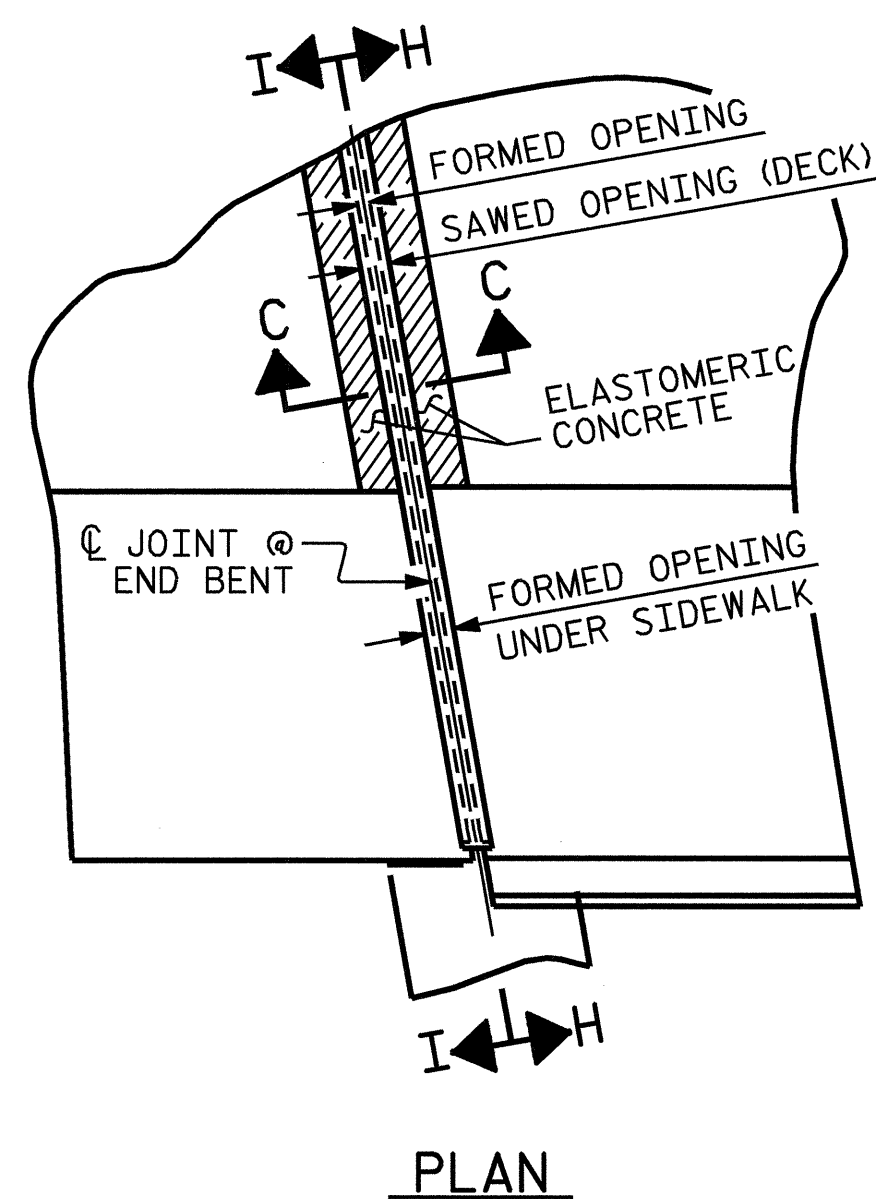
NOTE: IMMEDIATELY AFTER THE CONSTRUCTION OF THE APPROACH SLAB, THE CONTRACTOR SHALL PROVIDE TEMPORARY BERM AND SLOPE DRAIN. CONTRACTOR SHALL GRADE TO PIPE INLET AND PROVIDE EROSION RESISTANT MATERIAL AS SHOWN. THE EROSION RESISTANT MATERIAL SHALL BE EITHER 1) ASPHALT PLANT MIX, TYPE 1 OR TYPE 2, MIN. 2\"/>



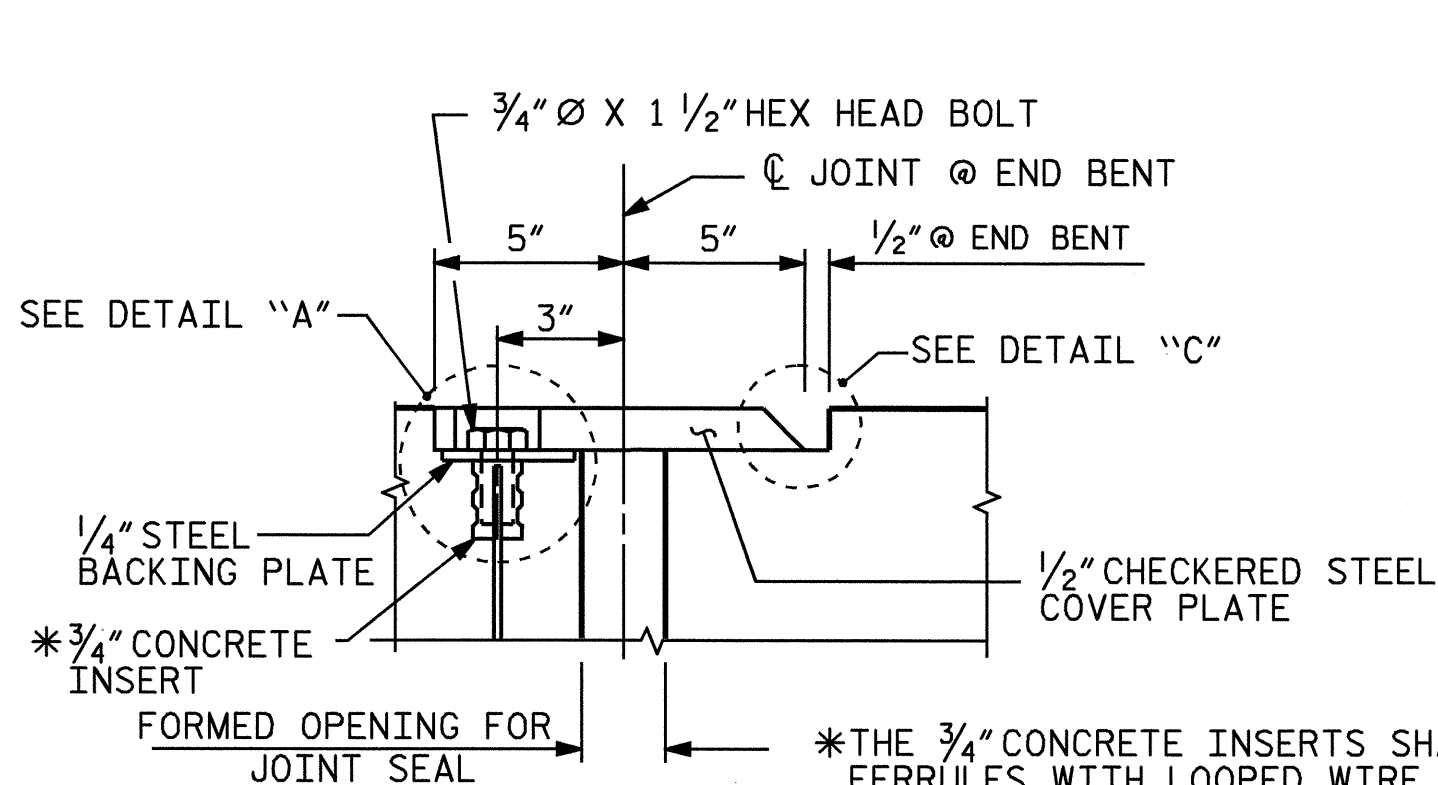
SECTION S-S

TEMPORARY BERM AND SLOPE DRAIN DETAILS

(TO BE USED WHEN SHOULDER BERM GUTTER IS REQUIRED)

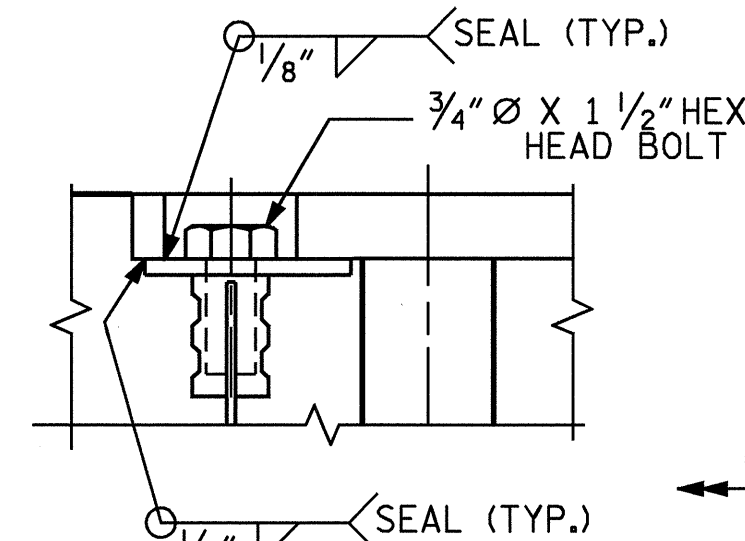


PLAN



SECTION K-K

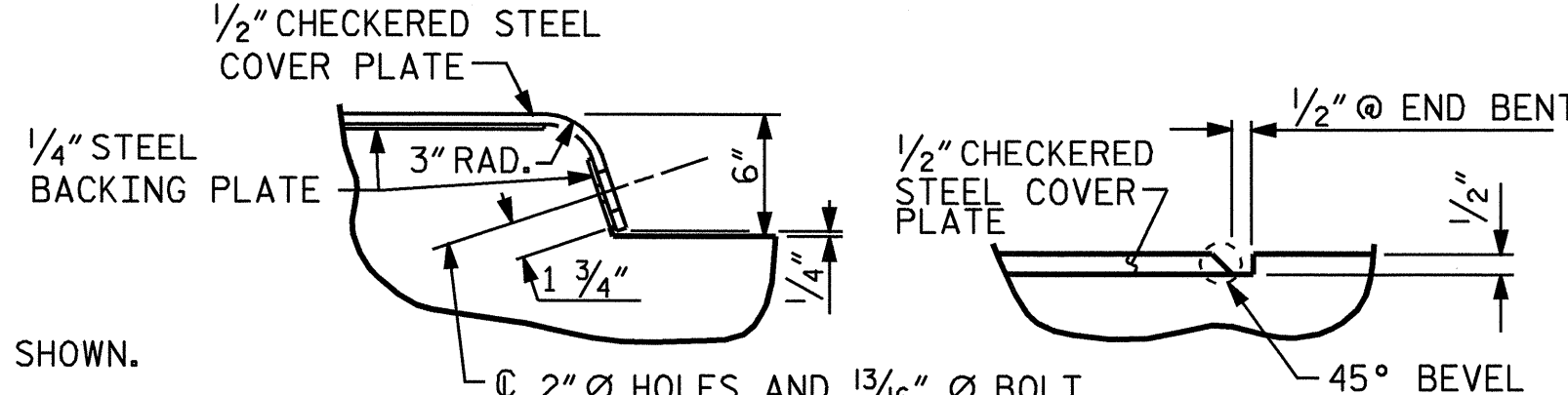
*THE 3/4\"/>



DETAIL \"/>

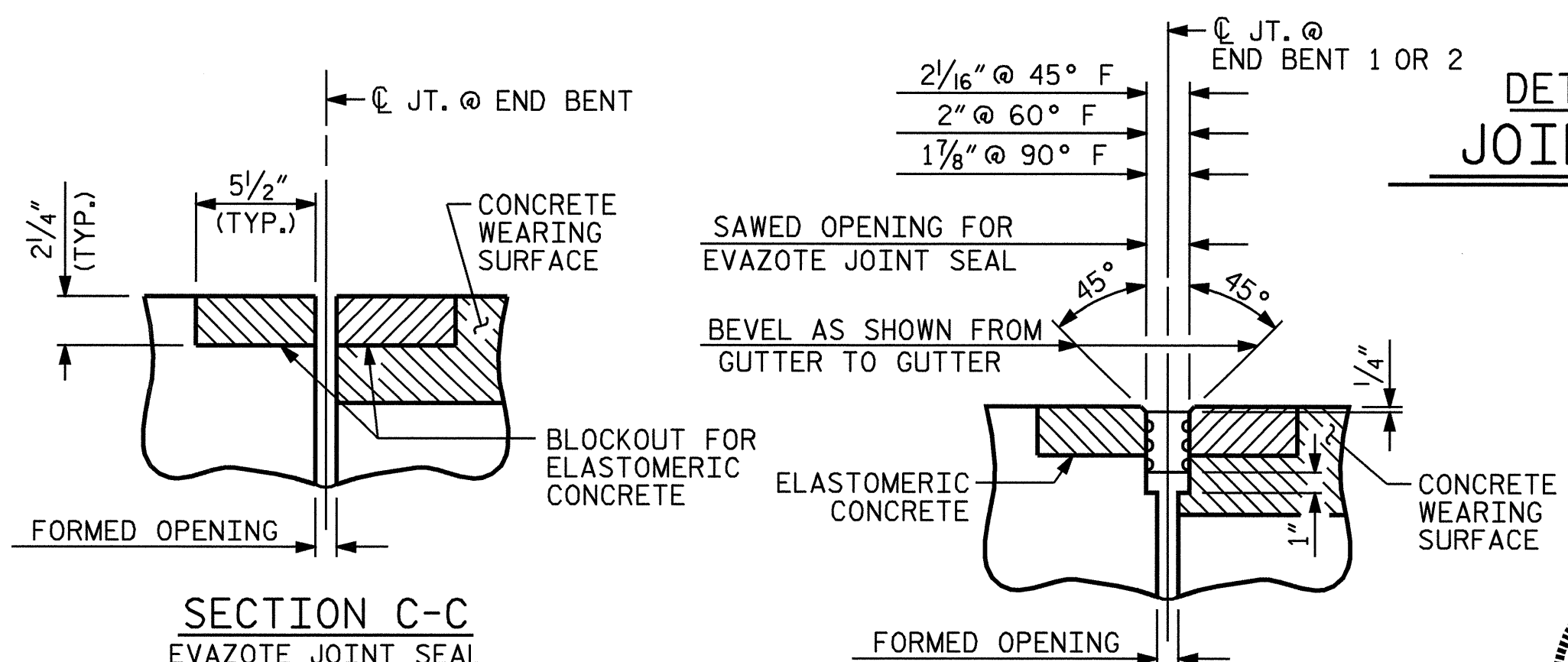
ELASTOMERIC CONCRETE	
END BENT NO.	ELASTOMERIC CONCRETE (CU. FT.)**
1	7.9
2	7.9
TOTAL	

** BASED ON THE MINIMUM BLOCKOUT SHOWN.



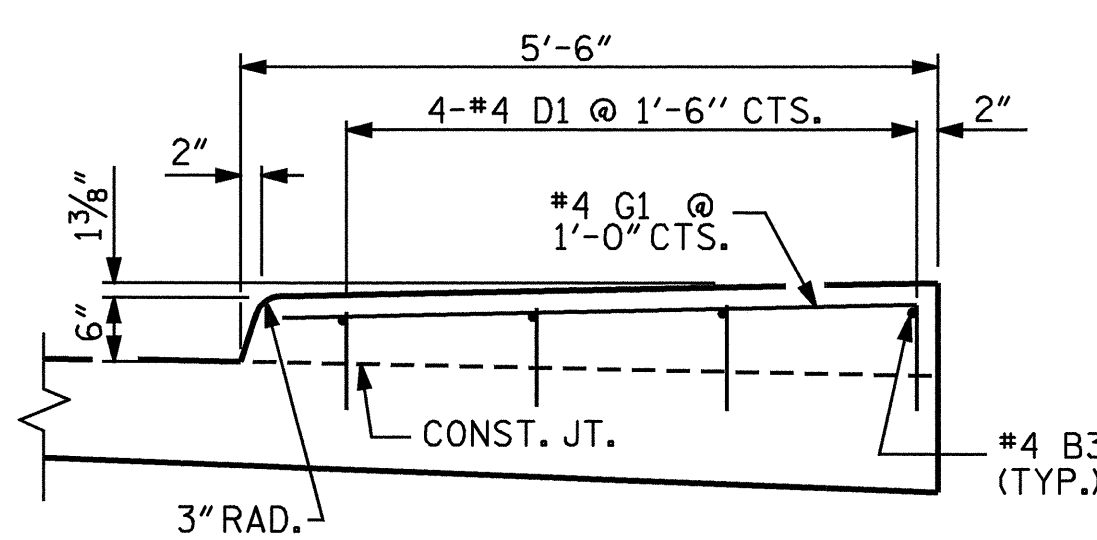
DETAIL \"/>

(FOR SIDEWALK)



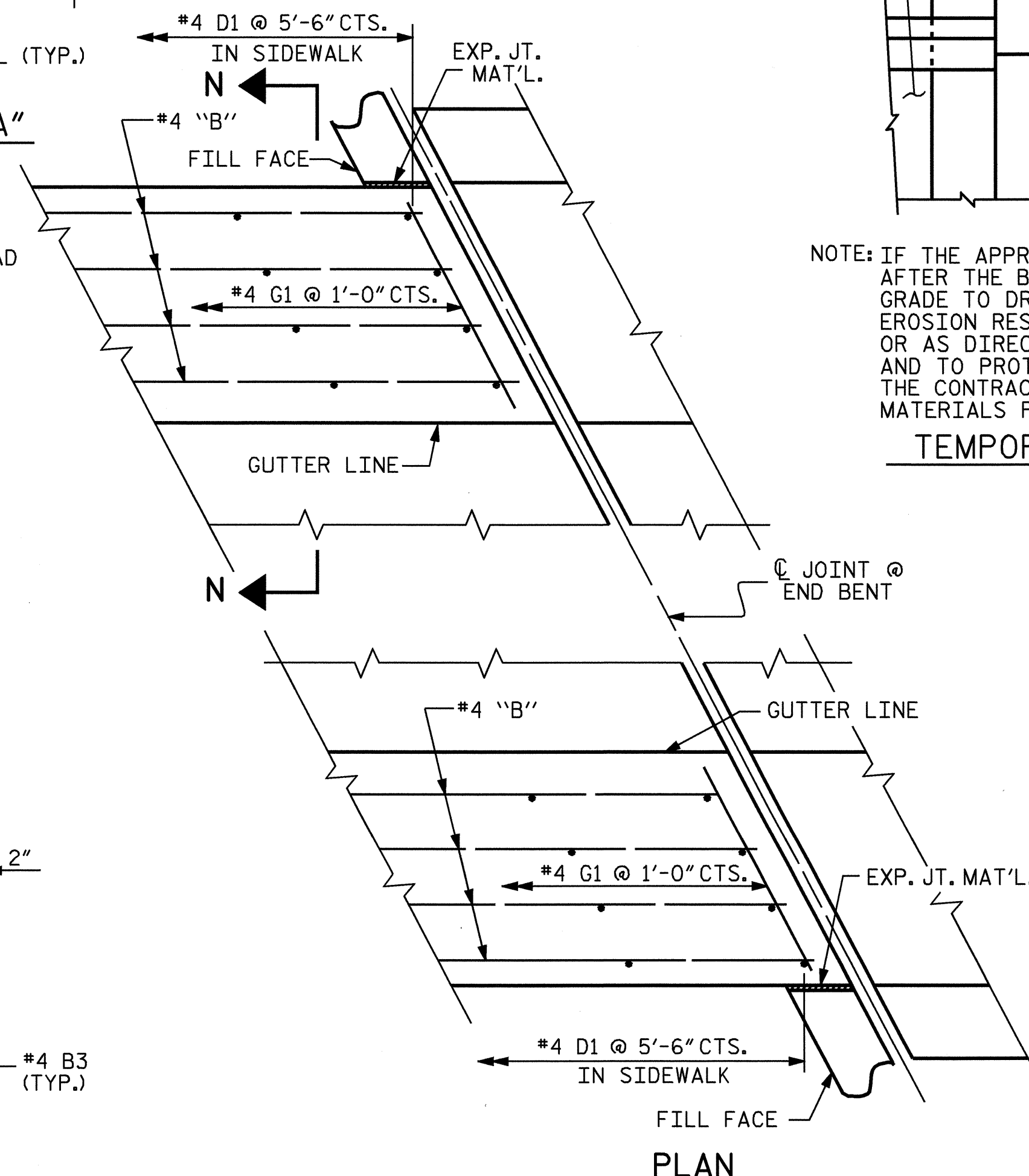
SECTION C-C
EVAZOTE JOINT SEAL
(PRE-SAWED ELASTOMERIC CONCRETE DIMENSIONS)

SECTION C-C
EVAZOTE JOINT SEAL

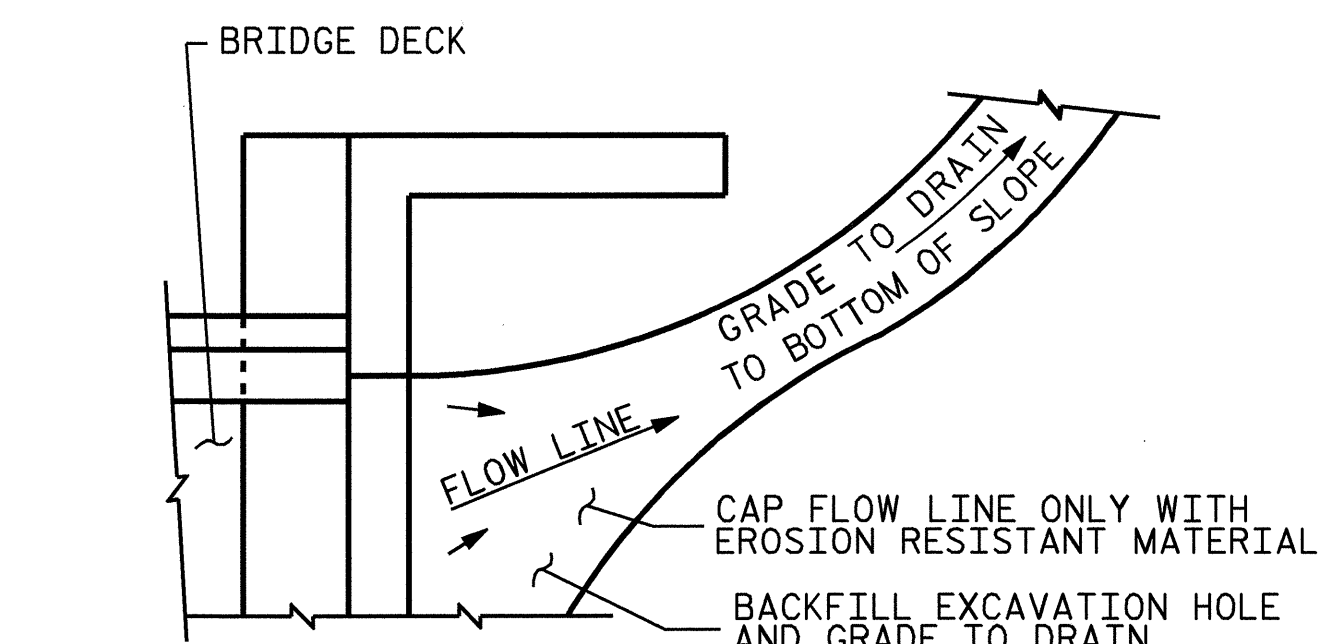


SECTION N-N

SIDEWALK DETAILS



PLAN



NOTE: IF THE APPROACH SLAB IS NOT CONSTRUCTED IMMEDIATELY AFTER THE BACKFILLING OF THE END BENT EXCAVATION, GRADE TO DRAIN TO THE BOTTOM OF THE SLOPE AND PROVIDE EROSION RESISTANT MATERIAL, SUCH AS FIBERGLASS ROVING OR AS DIRECTED BY THE ENGINEER TO PREVENT SOIL EROSION AND TO PROTECT THE AREA ADJACENT TO THE STRUCTURE. THE CONTRACTOR WILL BE REQUIRED TO REMOVE THESE MATERIALS PRIOR TO CONSTRUCTION OF THE APPROACH SLAB.

TEMPORARY DRAINAGE DETAIL

PROJECT NO. B-3450
DURHAM COUNTY
STATION: 22+37.00 -L-

SHEET 2 OF 2

STATE OF NORTH CAROLINA
DEPARTMENT OF TRANSPORTATION
RALEIGH

STANDARD

BRIDGE APPROACH
SLAB DETAILS

REVISIONS						1988
NO.	BY:	DATE:	NO.	BY:	DATE:	SHEET NO.
1			3			S-53
2			4			TOTAL SHEETS 53

STR. 2 STD. NO. BAS10

ASSEMBLED BY: A.L.MEADOWS DATE: 8/01/02
CHECKED BY: T.A.HARRIS DATE: 10/8/02
DRAWN BY: FCJ 11/88 REV. 8/16/99 MAB/LES
CHECKED BY: ARB 11/88 REV. 10/17/00 RWW/LES
REV. 5/7/03 RWW/JTE

08-FEB-2005 08:33
W:\squad\b3450\taharris\Microstation\STR. 2\B3450.sd_AS.02.dgn
TAHarris

