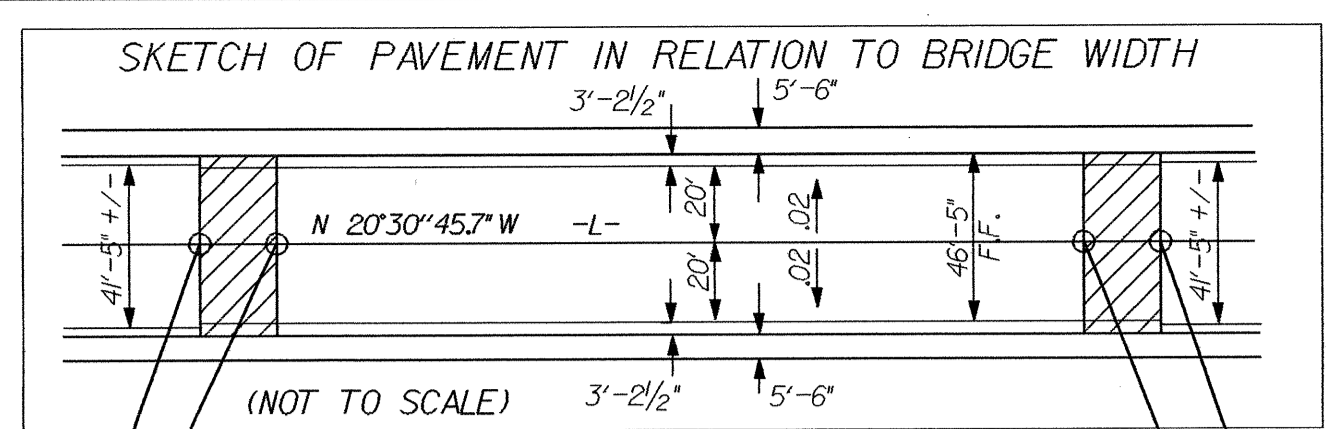


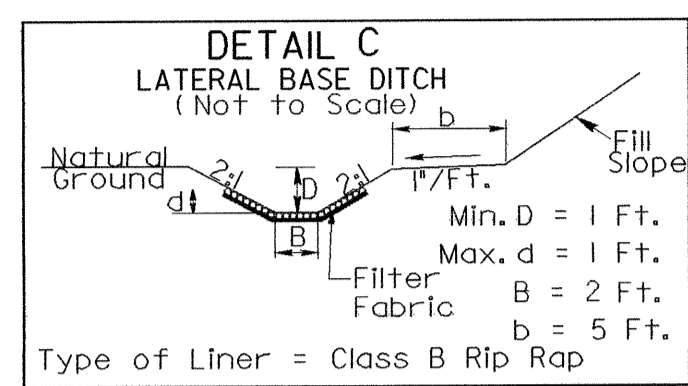
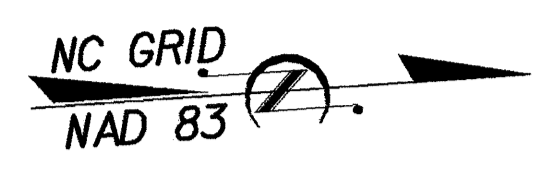
PROJECT REFERENCE NO.	SHEET NO.
B-3450	EC-8/CONST.5
RW SHEET NO.	
ROADWAY DESIGN ENGINEER	HYDRAULICS ENGINEER

**-DET2- CURVE DATA**

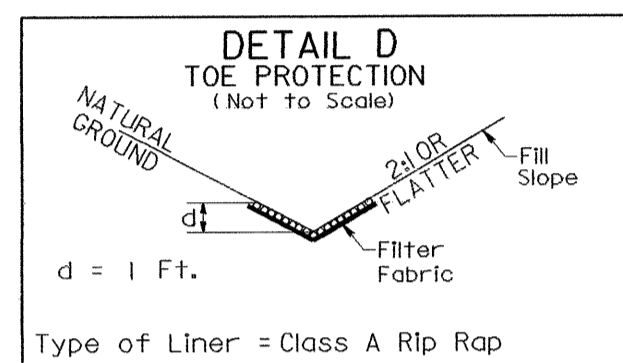
PI Sta 0+98.98 Δ = 29' 12" 00.9" (LT) D = 15' 04" 40.2" L = 193.66' T = 98.98' R = 380.00' SE = SEE PLANS RUNOFF = SEE PLANS V = 35 MPH	PI Sta 3+99.49 Δ = 56' 52" 59.8" (RT) D = 15' 04" 40.2" L = 377.26' T = 205.82' R = 380.00' SE = 0.06 RUNOFF = SEE PLANS V = 35 MPH	PI Sta 6+78.43 Δ = 31' 35" 31.1" (LT) D = 15' 04" 40.2" L = 209.53' T = 107.50' R = 380.00' SE = SEE PLANS RUNOFF = SEE PLANS V = 35 MPH
---	---	--



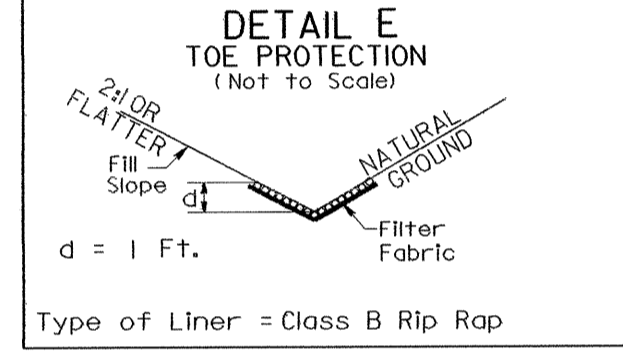
NOTE: UTILIZE TEMPORARY ROCK SEDIMENT DAM TYPE - B AS STILLING BASIN WHERE APPLICABLE.



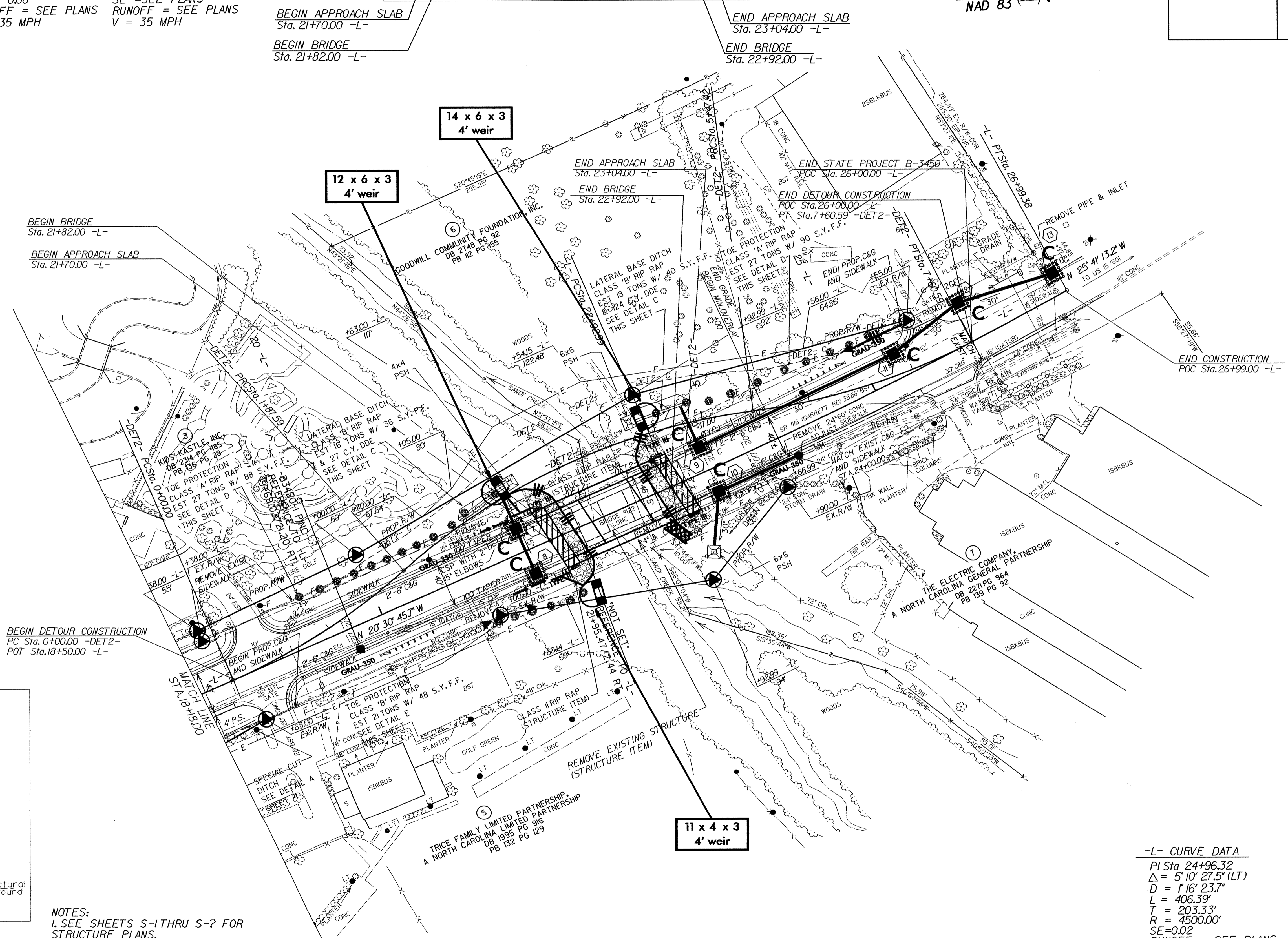
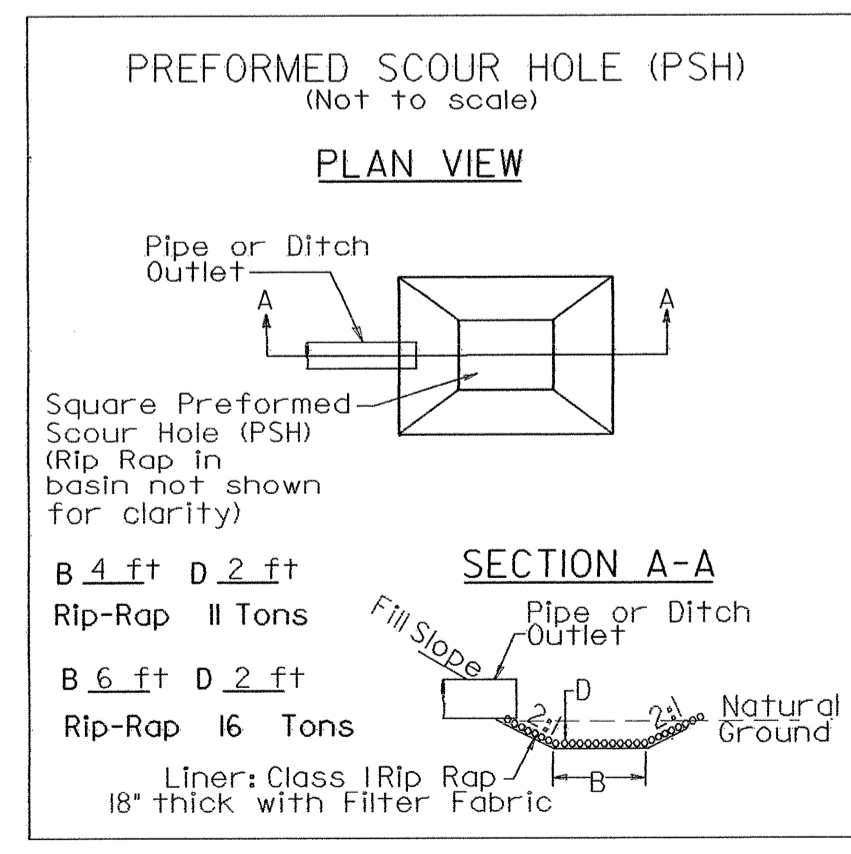
FROM STATION 21+00 TO STATION 21+50 LT.  
FROM STATION 22+85 TO STATION 23+40 LT.



FROM STATION 19+25 TO STATION 21+00 LT.  
FROM STATION 23+40 TO STATION 25+20 LT.



FROM STATION 20+85 TO STATION 21+80 RT.



NOTES:  
1. SEE SHEETS S-1 THRU S-7 FOR STRUCTURE PLANS.  
2. SEE SHEET 6 FOR -L- GRADE & PROFILE & SHEET 7 FOR -DET2- GRADE & PROFILE.  
3. ALL PROPOSED DRIVEWAY RADII 25 FT UNLESS OTHERWISE SHOWN.  
4. FLAT GRATES TO BE USED ON ENTIRE PROJECT.



**-L- CURVE DATA**

PI Sta 24+96.32 Δ = 5' 10" 27.5" (LT) D = 1' 16" 23.7" L = 406.39' T = 203.33' R = 4500.00' SE = 0.02 RUNOFF = SEE PLANS V = 45 MPH
---