

PROJECT REFERENCE NO.	SHEET NO.
B-3450	EC-10/CONST-2-D
RW SHEET NO.	
ROADWAY DESIGN ENGINEER	HYDRAULICS ENGINEER

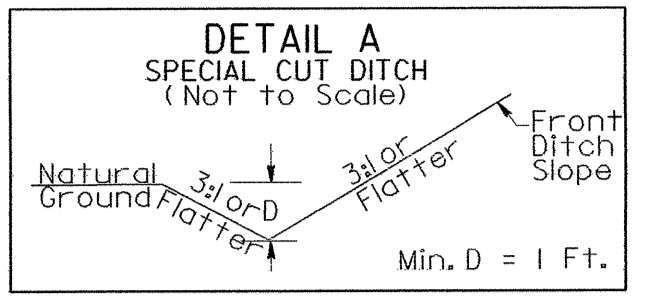
NOTE: UTILIZE TEMPORARY ROCK SEDIMENT DAM TYPE - B AS STILLING BASIN WHERE APPLICABLE.



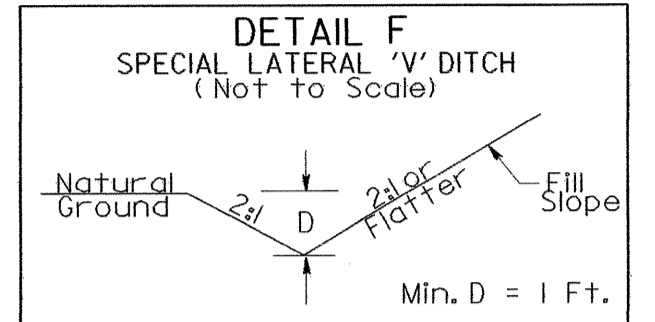
DETOUR 2

-DET2- CURVE DATA

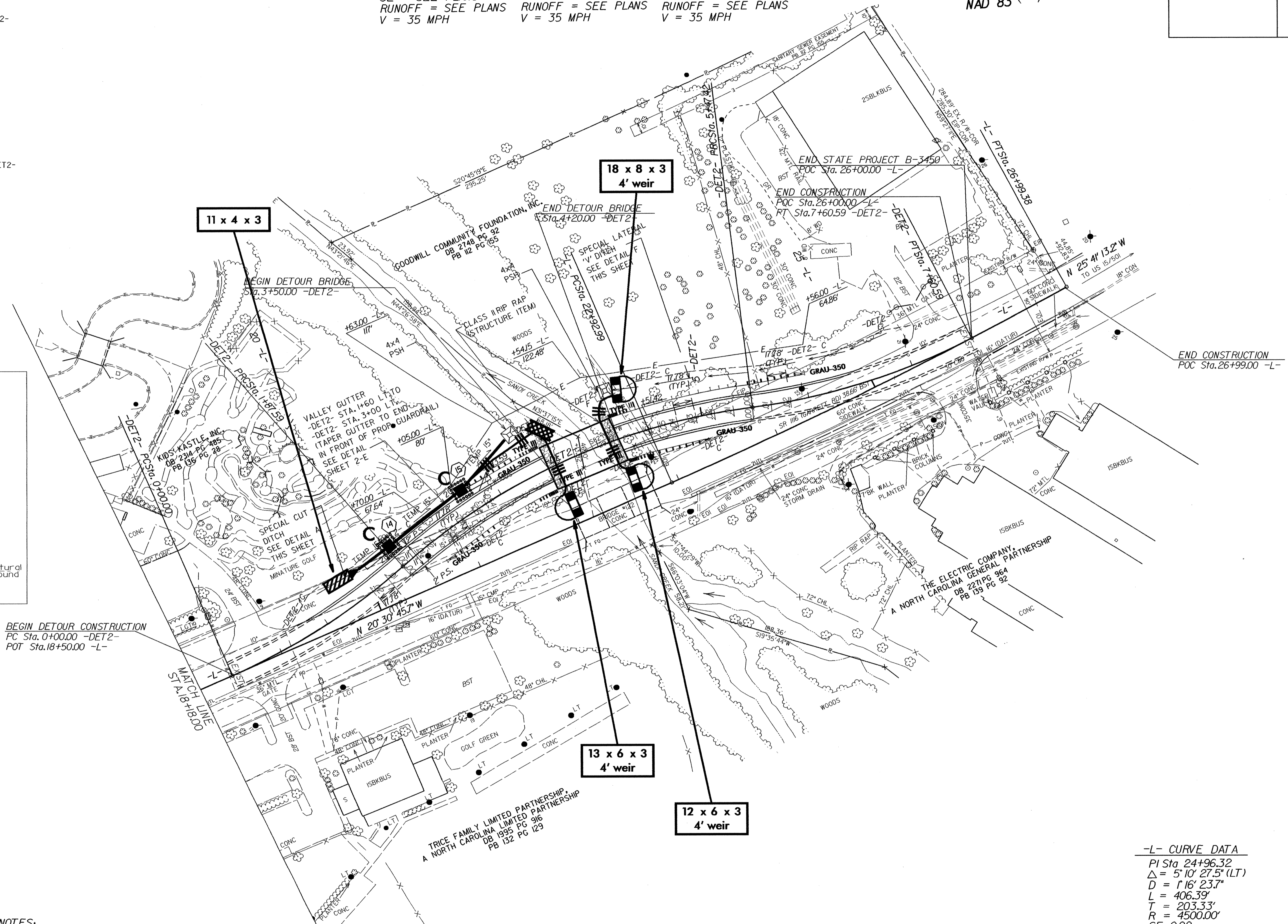
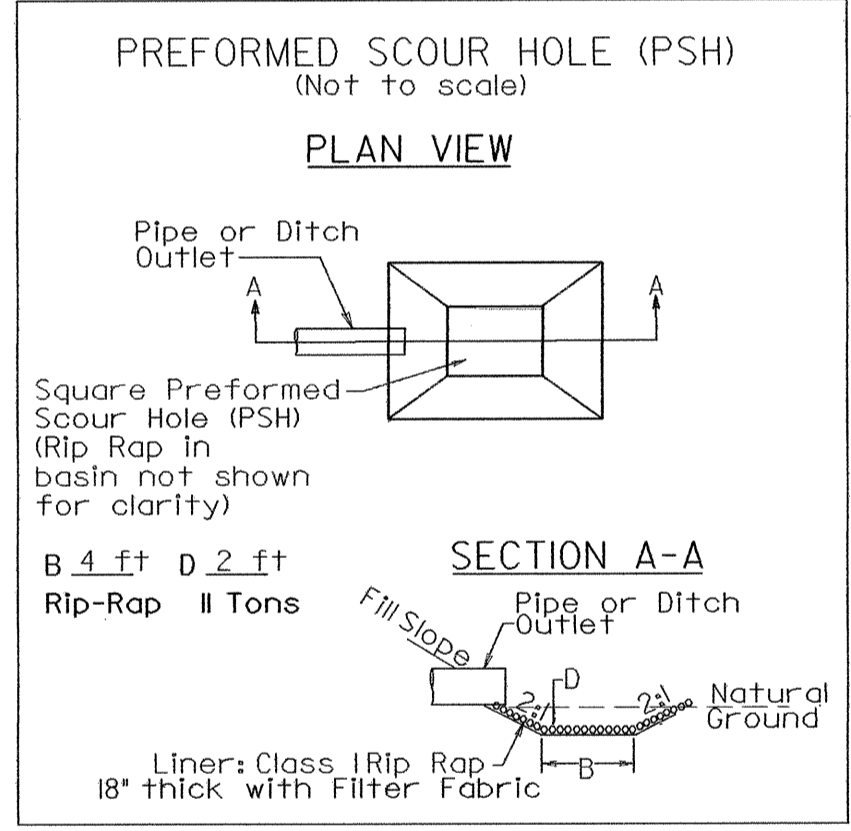
PI Sta 0+94.57 Δ = 17° 54' 49.5" (LT) D = 9' 32' 57.5" L = 187.59' T = 94.57' R = 600.00' SE = SEE PLANS RUNOFF = SEE PLANS V = 35 MPH	PI Sta 3+73.00 Δ = 34° 21' 39.3" (RT) D = 9' 32' 57.5" L = 359.83' T = 185.51' R = 600.00' SE = 0.054 RUNOFF = SEE PLANS V = 35 MPH	PI Sta 6+55.14 Δ = 20° 21' 22.0" (LT) D = 9' 32' 57.5" L = 213.77' T = 107.72' R = 600.00' SE = SEE PLANS RUNOFF = SEE PLANS V = 35 MPH
--	---	---



FROM STATION 1+00 TO STATION 1+55 LT. -DET2-



FROM STATION 4+30 TO STATION 6+90 LT. -DET2-



NOTES:
1. SEE SHEET 6 FOR -L- GRADE & PROFILE & SHEET 7 FOR -DET2- GRADE & PROFILE.
2. ALL PROPOSED DRIVEWAY RADII 25 FT UNLESS OTHERWISE SHOWN.
3. FLAT GRATES TO BE USED ON ENTIRE PROJECT.

-L- CURVE DATA

PI Sta 24+96.32
Δ = 5° 10' 27.5" (LT)
D = 1' 16' 23.7"
L = 406.39'
T = 203.33'
R = 4500.00'
SE = 0.02
RUNOFF = SEE PLANS
V = 45 MPH