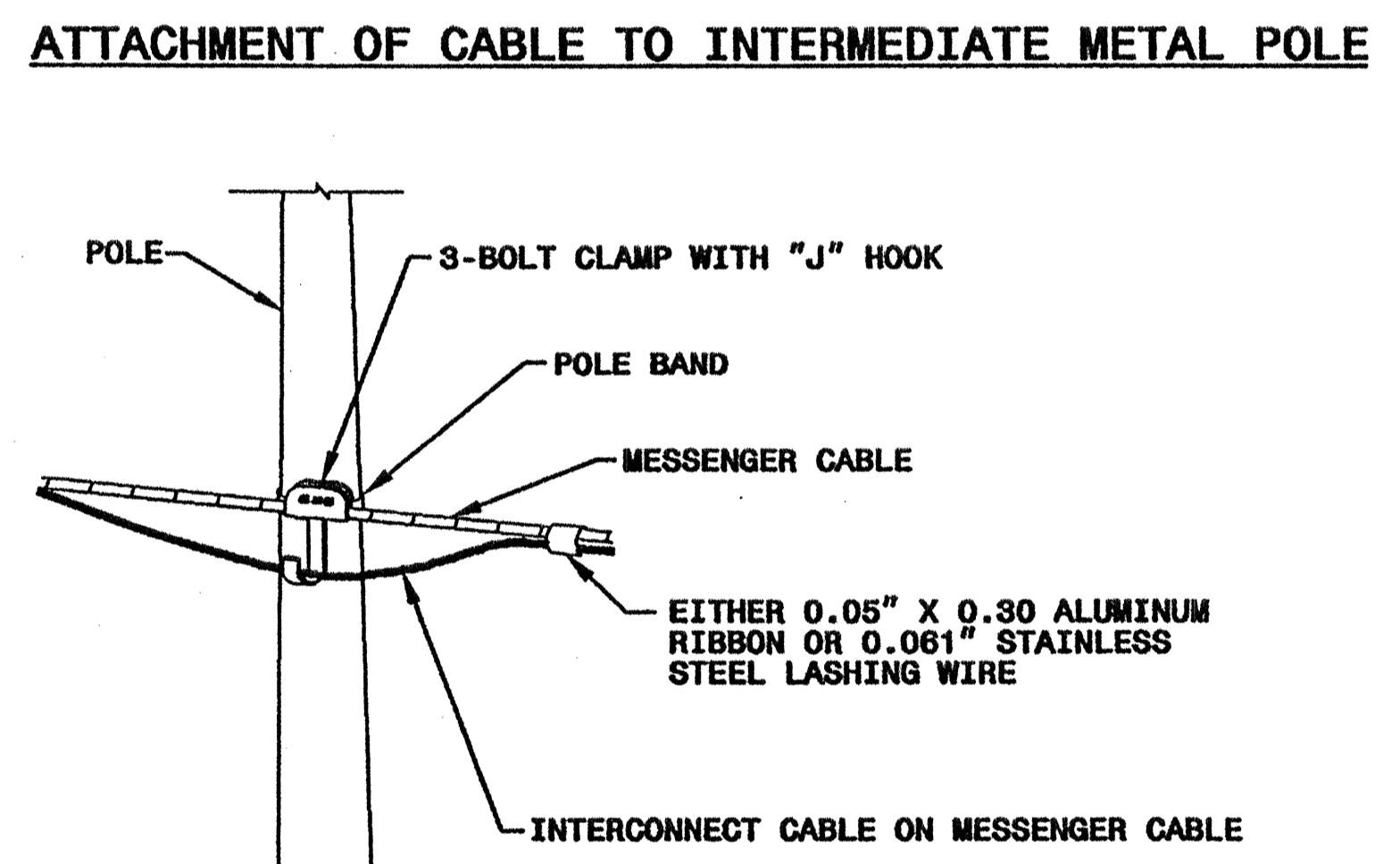
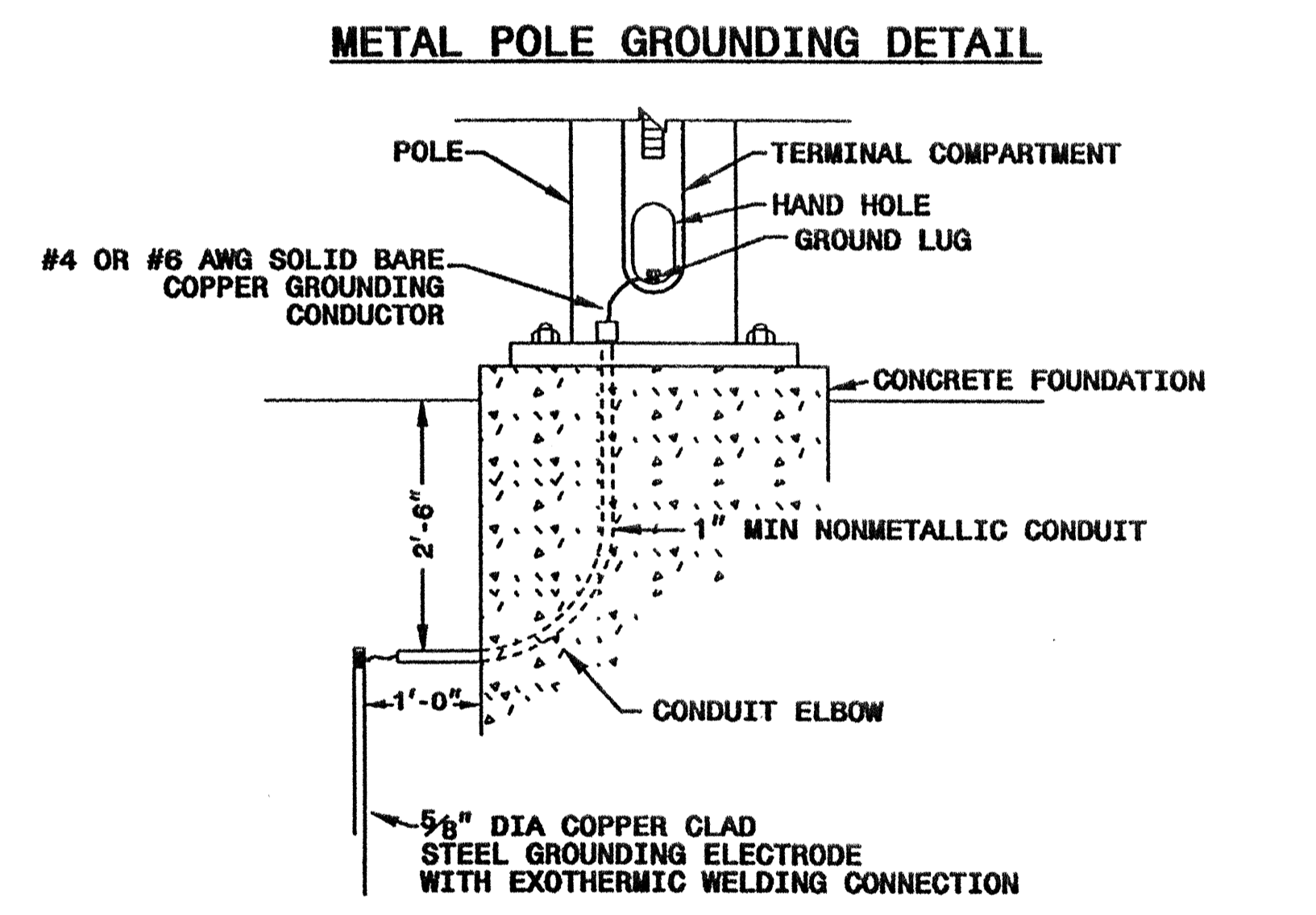
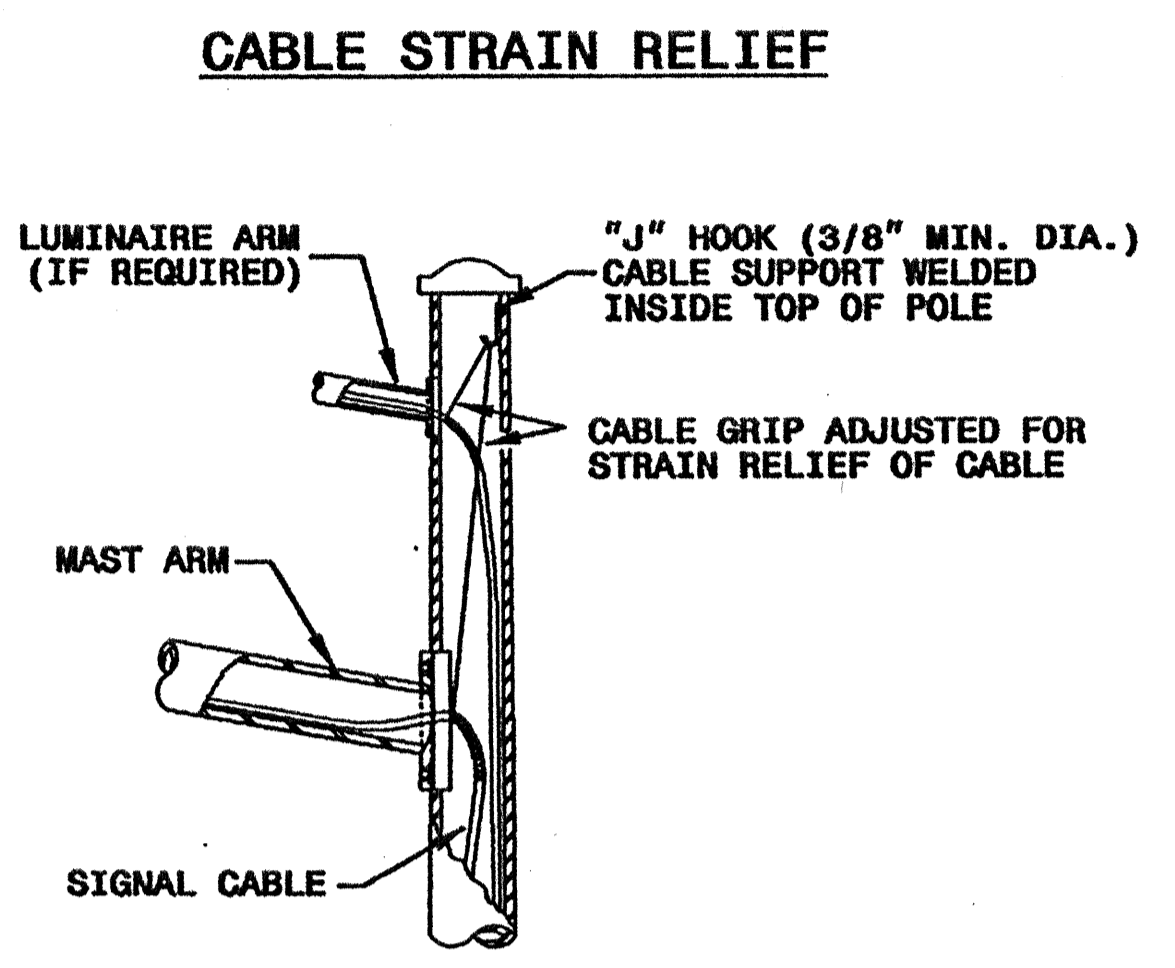
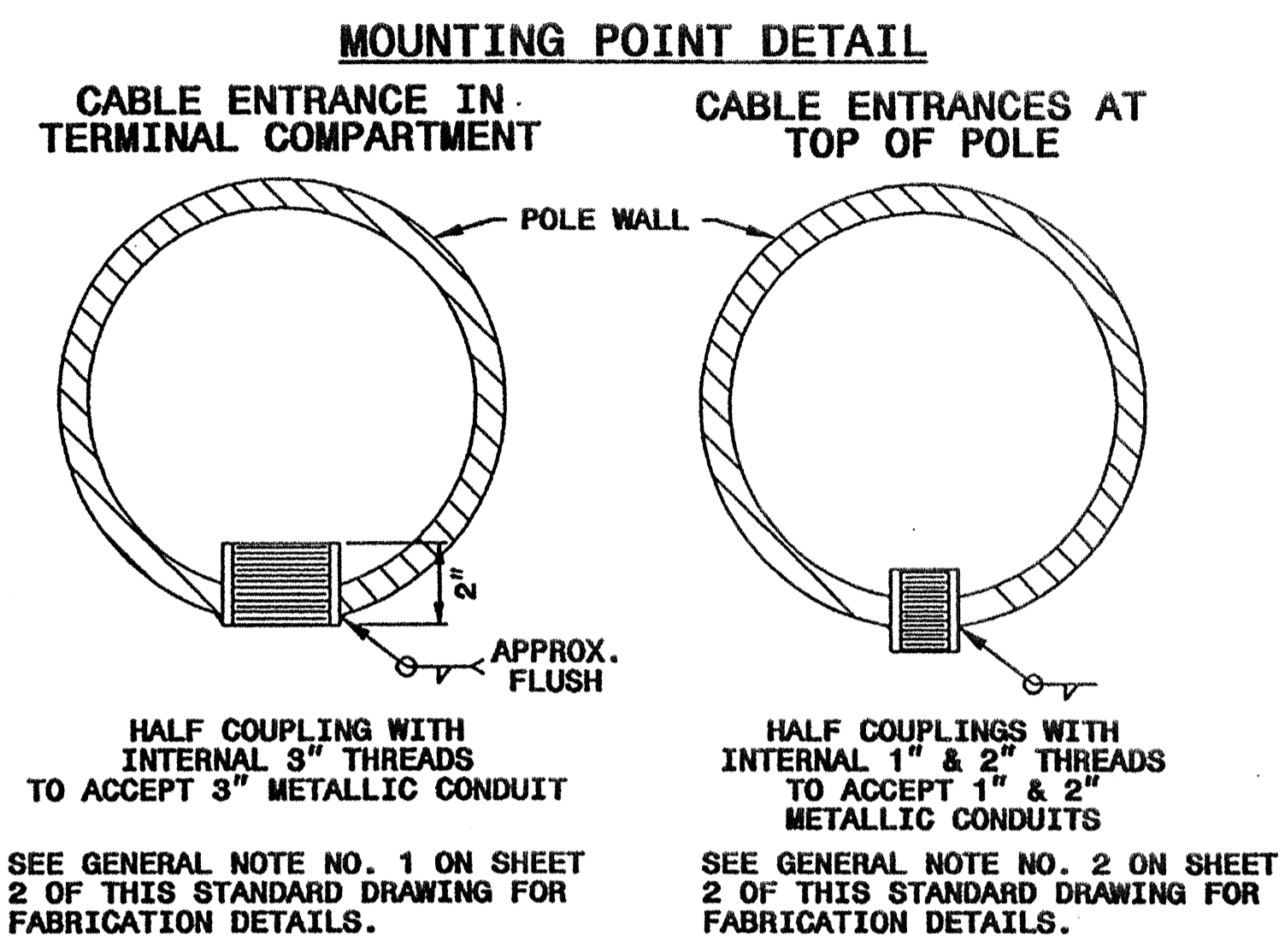


STATE OF NORTH CAROLINA
DEPT. OF TRANSPORTATION
DIVISION OF HIGHWAYS
RALEIGH, N.C.

9-03

ENGLISH STANDARD DRAWING FOR
METAL POLES
MISCELLANEOUS DETAILS

SHEET 3 OF 3
1740.01



STATE OF NORTH CAROLINA
DEPT. OF TRANSPORTATION
DIVISION OF HIGHWAYS
RALEIGH, N.C.

9-03

ENGLISH STANDARD DRAWING FOR
METAL POLES
MISCELLANEOUS DETAILS

SHEET 3 OF 3
1740.01

Structural Engineer	Electrical Engineer
<i>D. S. Saxena</i> 9/19/03	<i>Milton I. Dean</i> 9/22/03
SIGNATURE	DATE
Standard Drawings	
Traffic Management and Signal Systems Unit	
122 N. McDowell St., Raleigh, NC 27603	
See Plate for Title	
Original: 2002 Standards	

19-SEP-2003 14:27
c:\p1\lhb\work\p1\lhb\work\1740.01\1740.01.dgn