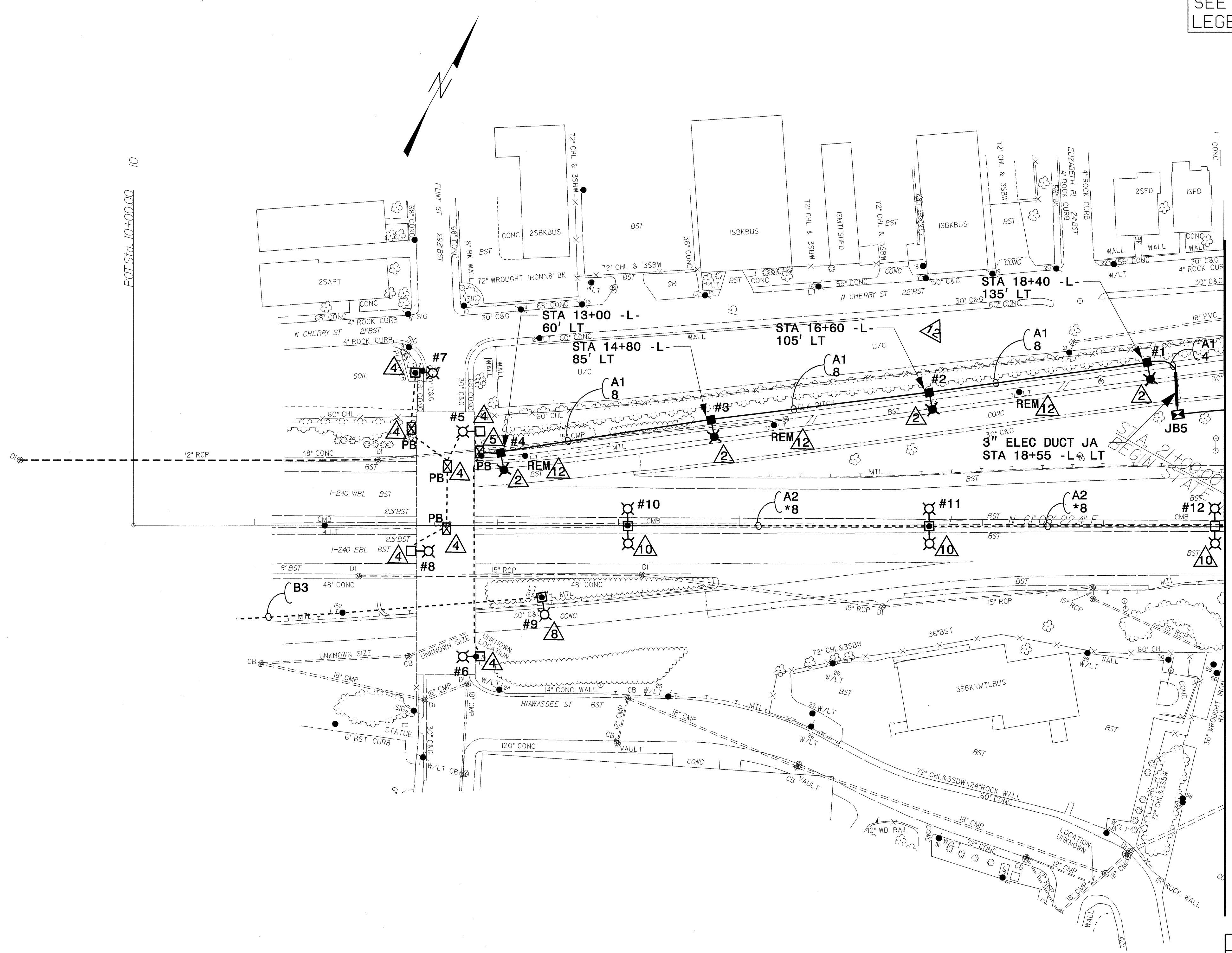


SEE SHEET "E1" FOR
LEGEND & △ NOTES

USE FOR LIGHTING CONSTRUCTION ONLY



MATCH LINE STA 19+00 -L- SEE SHEET E3

2			
1			
Rev.	Date	Description	Approved

NORTH CAROLINA
DEPARTMENT OF TRANSPORTATION
DESIGN SERVICES LIGHTING/ELECTRICAL SECTION

LIGHTING LAYOUT
I-240/US25(MERRIMON AVE) INTERCHANGE
STA 10+00 -L- TO STA 19+00 -L-

BUNCOMBE CO

Designed By P. K. CHAN	Checked By <i>[Signature]</i>	Approved By <i>[Signature]</i>
---------------------------	----------------------------------	-----------------------------------

02/03/98

13-JUL-2004 14:06
chan\My Documents\Lighting Electrical\I-240\U3302\Proj MSJ\U3302.LE_PSH-E2.dgn
pchan AT DS214520