

18-OCT-2002 05:57:13 usrd\stds\stds\02\stds to Special Details\english\85701\857d01.dgn
 entered at 05:58:56

5/14/99

STATE OF NORTH CAROLINA
 DEPT. OF TRANSPORTATION
 DIVISION OF HIGHWAYS
 RALEIGH, N.C.

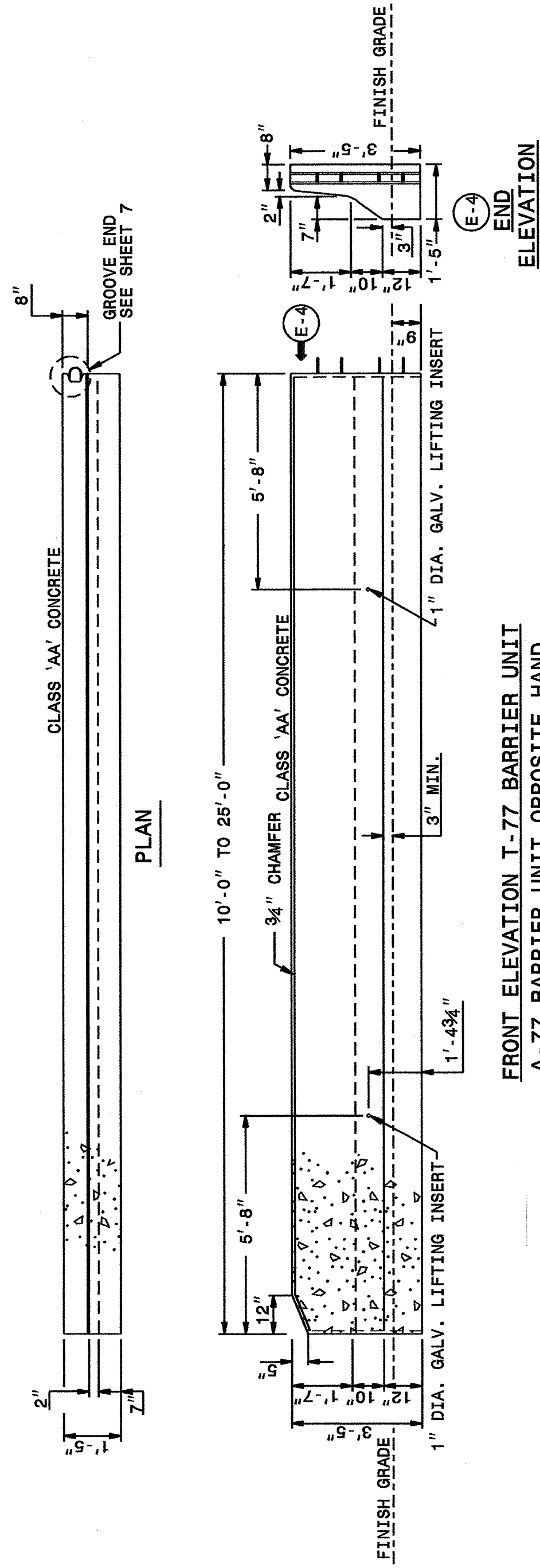
ENGLISH DETAIL DRAWING FOR
PRECAST REINFORCED CONCRETE BARRIER
 41" SINGLE FACED

SHEET 3 OF 8
857D01

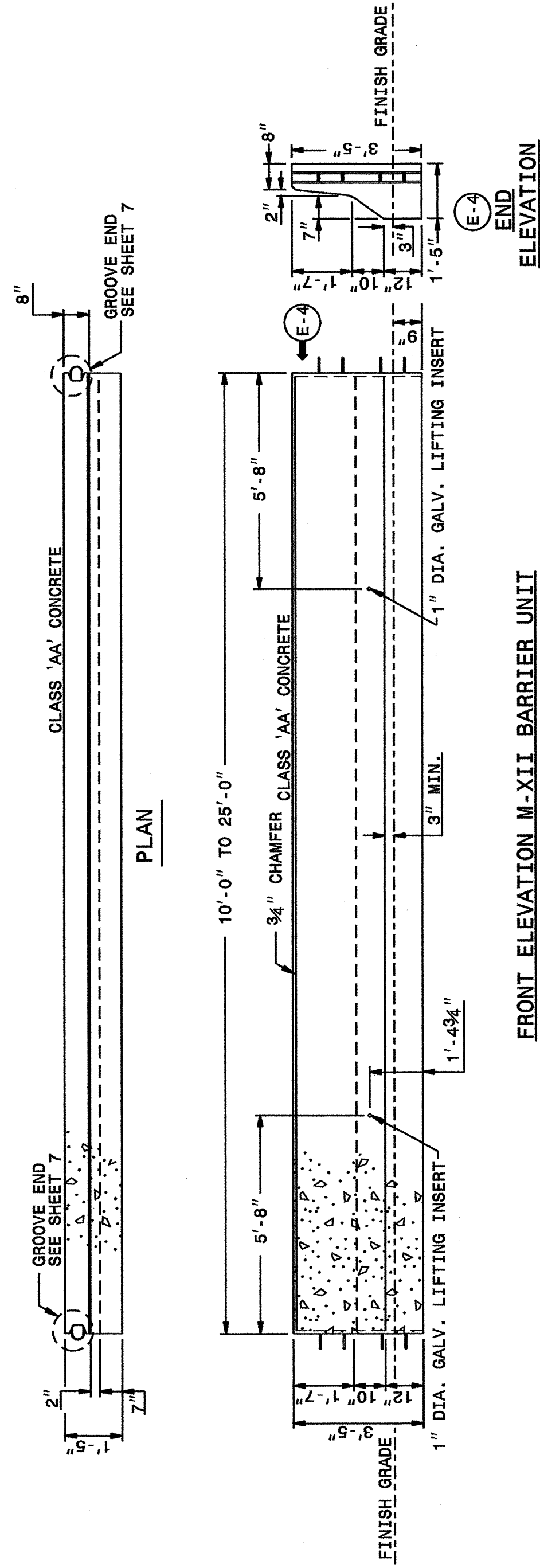
STATE OF NORTH CAROLINA
 DEPT. OF TRANSPORTATION
 DIVISION OF HIGHWAYS
 RALEIGH, N.C.

ENGLISH DETAIL DRAWING FOR
PRECAST REINFORCED CONCRETE BARRIER
 41" SINGLE FACED

SHEET 3 OF 8
857D01



FRONT ELEVATION I-77 BARRIER UNIT
 A-77 BARRIER UNIT OPPOSITE HAND



FRONT ELEVATION M-XII BARRIER UNIT

STATE OF NORTH CAROLINA
 DEPT. OF TRANSPORTATION
 DIVISION OF HIGHWAYS
 RALEIGH, N.C.

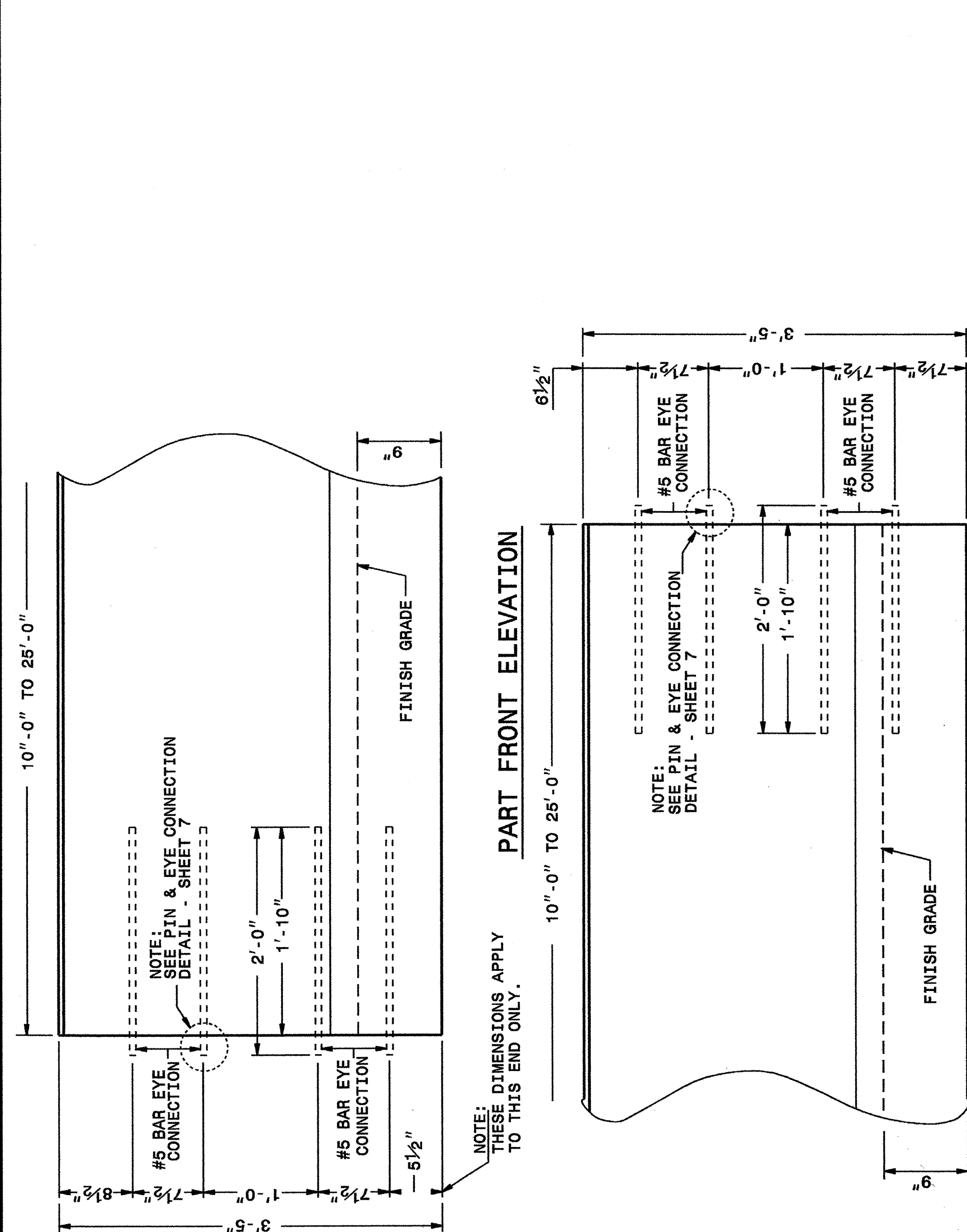
ENGLISH DETAIL DRAWING FOR
PRECAST REINFORCED CONCRETE BARRIER
 41" SINGLE FACED

SHEET 4 OF 8
857D01

STATE OF NORTH CAROLINA
 DEPT. OF TRANSPORTATION
 DIVISION OF HIGHWAYS
 RALEIGH, N.C.

ENGLISH DETAIL DRAWING FOR
PRECAST REINFORCED CONCRETE BARRIER
 41" SINGLE FACED

SHEET 4 OF 8
857D01



PART FRONT ELEVATION

PART FRONT ELEVATION

ELEVATION VIEWS
 SHOWING PLACEMENT OF EYE
 BARS AT EACH END

DESIGN SERVICES UNIT
 STANDARDS AND SPECIAL DESIGN
 Office 919-250-4128 FAX 919-250-4119

SEE PLATE FOR TITLE

ORIGINAL BY: 2002 STD.857.01 DATE:
 MODIFIED BY: E.E. WARD DATE: 5-23-02
 CHECKED BY: E.E. WARD DATE:
 FILE SPEC.: /usr/stds/02tdetail/english/85701/857d01.dgn

