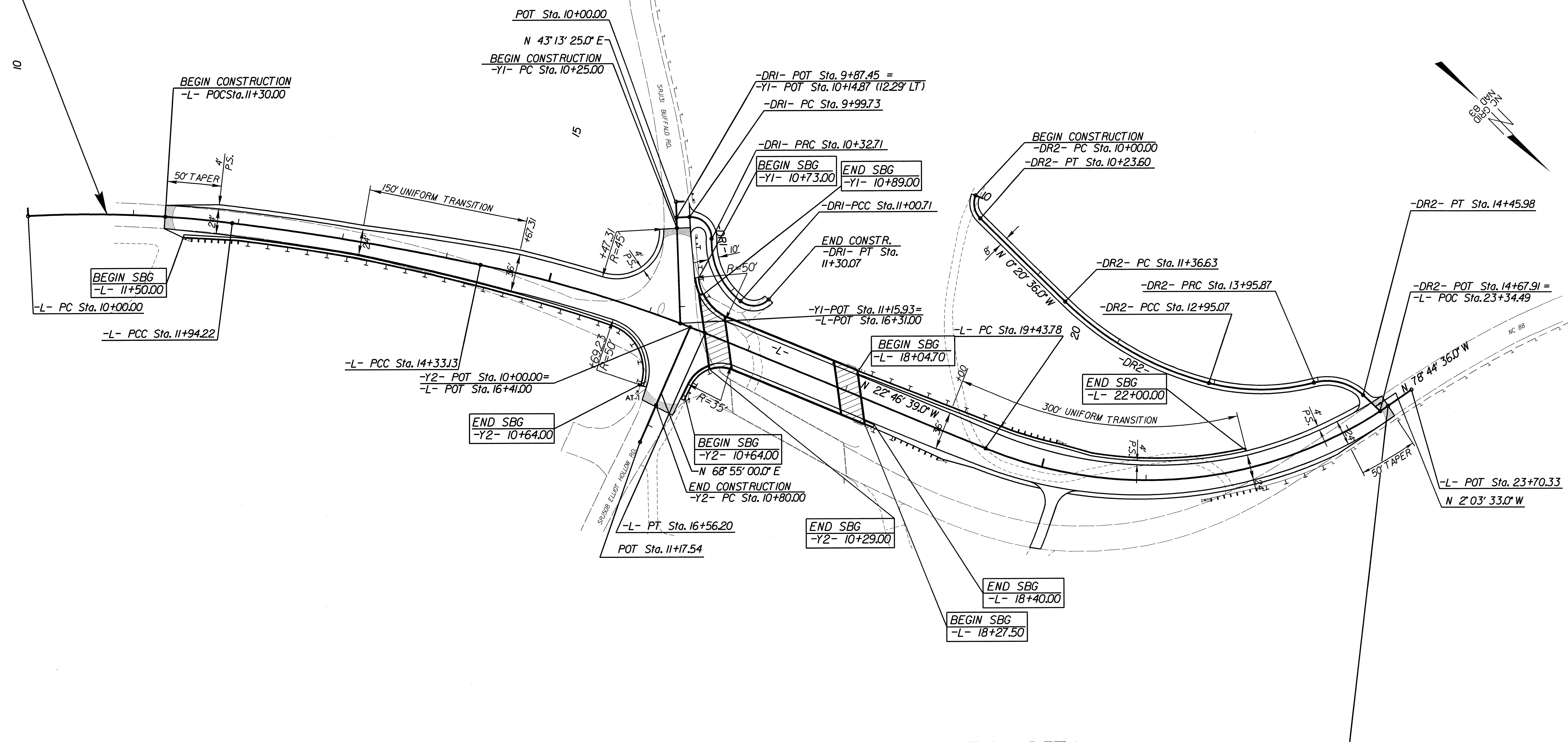


BEGIN PROJECT TIP B-3300
-L- POC STA. 10+75.00



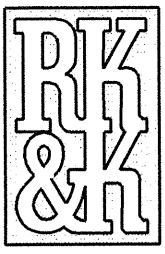
REVISIONS

INTERSECTION AND SHOULDER BERM GUTTER LOCATION DETAIL
SHOULDER BERM GUTTER - SBG

END PROJECT TIP B-3300
-L- PT STA. 23+43.54

11/29/2004
r:\Roadway\Proj\B3300\RDY_PSH_02H.dgn

SEE SHEET 3-B FOR SHOULDER BERM GUTTER SUMMARY
SEE SHEET 2 FOR SHOULDER BERM GUTTER DETAIL

PLANS PREPARED BY :

RUMMEL • KLEPPER & KAHL, LLP
consulting engineers
 5800 FARINGDON PLACE SUITE 105
 RALEIGH, NORTH CAROLINA 27609-3960
 (919) 878-9560
 FOR
DIVISION OF HIGHWAYS