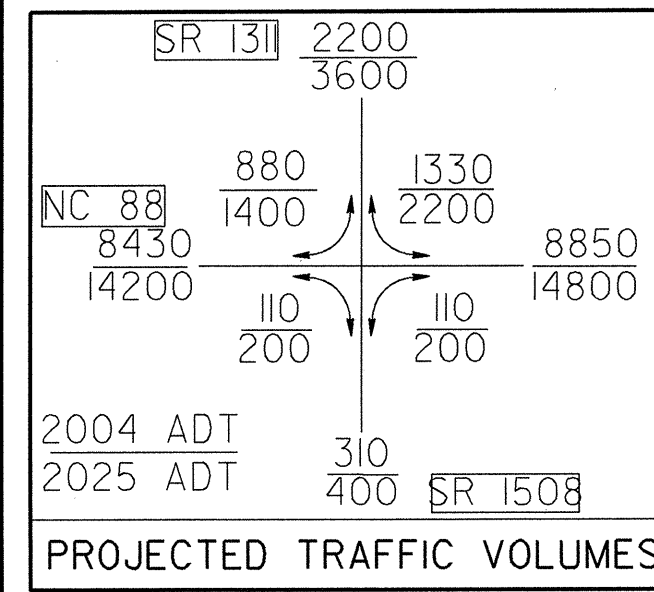
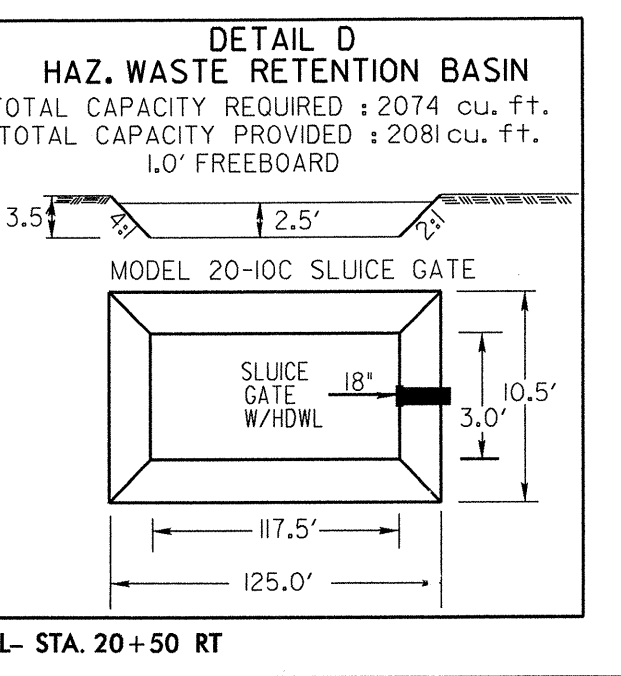
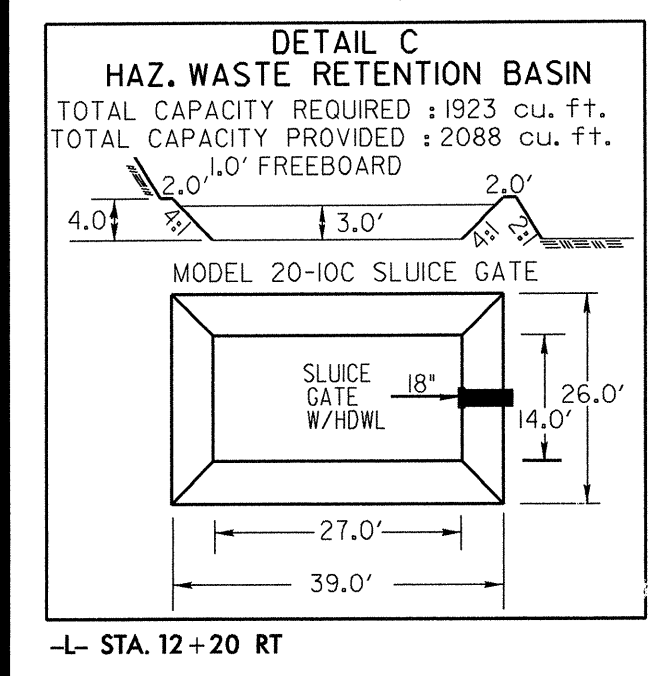
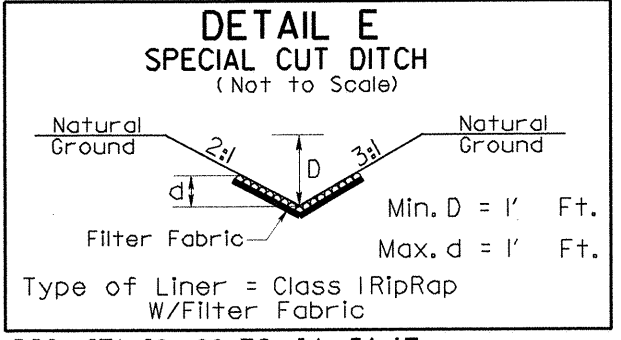
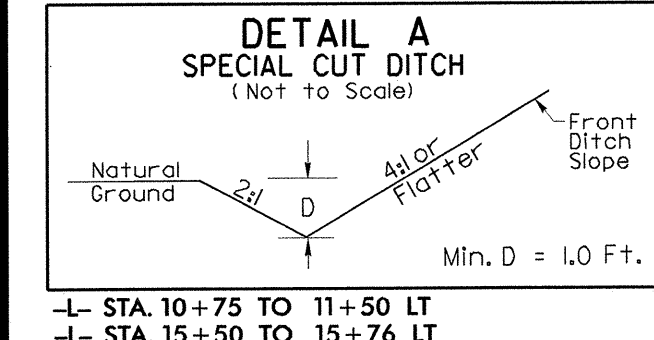
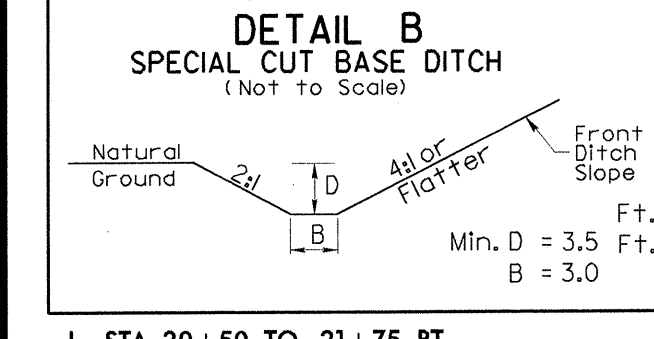
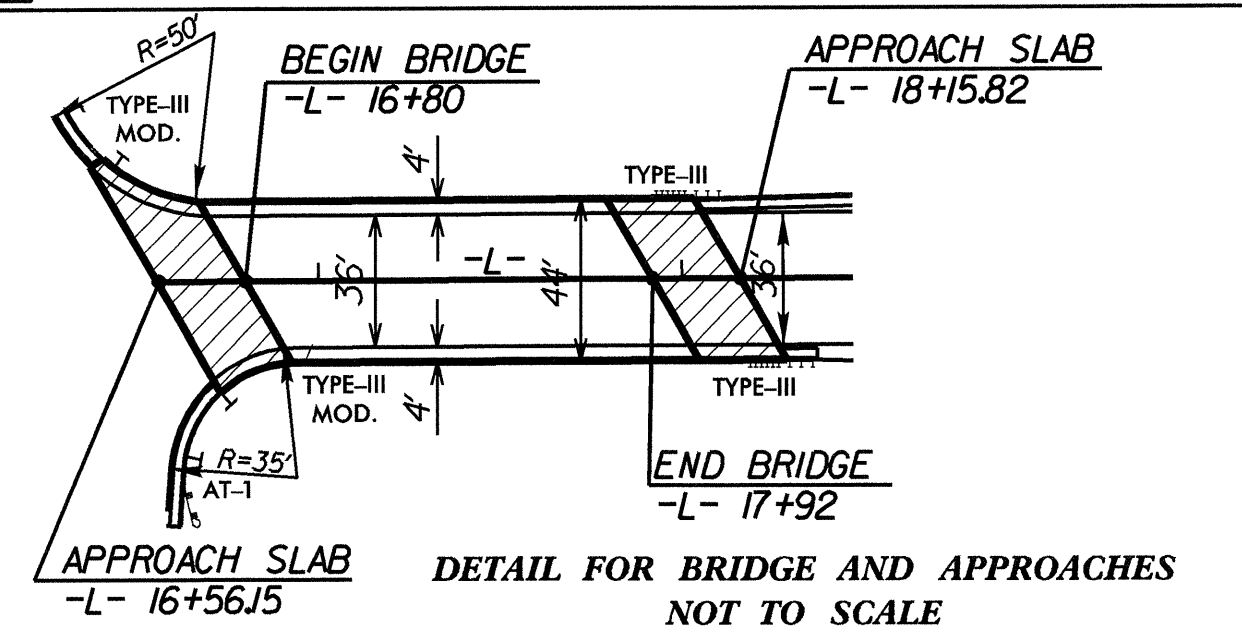
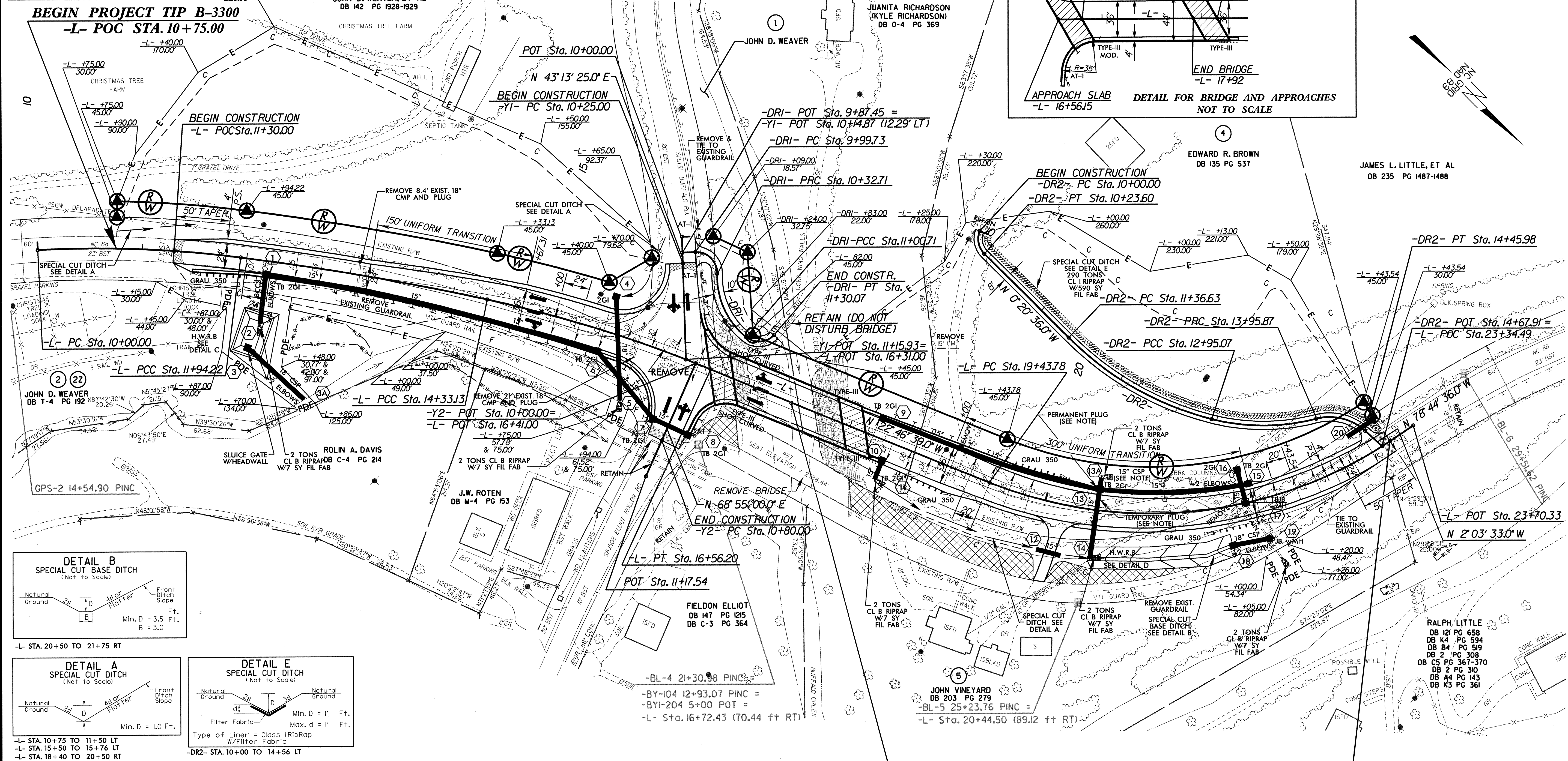


NOTE: TEMPORARILY PLUG PROPOSED OUTFLOW PIPE INSIDE STRUCTURE 13 AND PLACE TEMPORARY PIPE 13A WHILE HAZARDOUS WASTE RETENTION BASIN IS BEING BUILT. PLUG TEMPORARY PIPE AFTER COMPLETION OF H.W.R.B.



-L-		-DRI-	
PI Sta 10+97.36 Δ = 10' 11" 46.7" (RT) D = 5' 15" 00.0" L = 194.22' T = 97.36' R = 1,091.35' SE = match exist.	PI Sta 13+37.4 Δ = 4' 46" 42.0" (RT) D = 2' 00" 00.0" L = 238.07' T = 119.53' R = 2,864.79' SE = 0.04 ft/ft	PI Sta 15+44.95 Δ = 10' 02" 17.3" (RT) D = 4' 30" 00.0" L = 223.07' T = 111.82' R = 1,273.24' SE = 0.04 ft/ft	PI Sta 21+61.23 Δ = 55' 57" 57.0" (LT) D = 14' 00" 00.0" (36mph) L = 399.76' T = 217.45' R = 409.26' SE = 0.06 ft/ft
PI Sta 10+33.91 Δ = 94' 28" 18.4" (RT) D = 286' 28" 44.0" L = 32.98' T = 21.63' R = 20.00'	PI Sta 10+81.95 Δ = 53' 22" 07.2" (LT) D = 78' 29" 14.5" L = 68.00' T = 36.69' R = 73.00'	PI Sta 11+31.30 Δ = 84' 06" 34.0" (LT) D = 286' 28" 44.0" L = 29.36' T = 18.04' R = 20.00'	

*DESIGN EXCEPTION REQUIRED



BEGIN APPROACH SLAB -L- STA. 16+56.15
 BEGIN BRIDGE -L- STA. 16+80
 END BRIDGE -L- STA. 17+92
 END APPROACH SLAB -L- STA. 18+15.85

END PROJECT TIP B-3300
 -L- PT STA. 23+43.54

-DR2-			
PI Sta 10+13.39 Δ = 67' 36" 24.2" (LT) D = 286' 28" 44.0" L = 23.60' T = 13.39' R = 20.00'	PI Sta 12+17.74 Δ = 30' 15" 35.8" (LT) D = 19' 05" 54.9" L = 158.44' T = 81.11' R = 300.00'	PI Sta 13+46.56 Δ = 22' 52" 38.7" (LT) D = 28' 38" 52.4" L = 100.80' T = 51.50' R = 200.00'	PI Sta 14+23.26 Δ = 57' 25" 17.5" (RT) D = 114' 35" 29.6" L = 50.11' T = 27.39' R = 50.00'

NOTE:
 • SEE SHEET 2-B FOR ROCK PLATING DETAIL
 • SEE SHEET 2-L FOR INTERSECTION AND SHOULDER BERM GUTTER DETAIL
 • SEE SHEET 3-B FOR SHOULDER BERM GUTTER SUMMARY
 • SEE SHEET 5 FOR PROFILES

PLANS PREPARED BY :

RUMMEL • KLEPPER & KAHL, LLP
 consulting engineers
 5800 FARINGDON PLACE SUITE 105
 RALEIGH, NORTH CAROLINA 27609-3960
 (919) 878-9560
 FOR
 DIVISION OF HIGHWAYS

REVISIONS

11/29/2004
 P:\Roadway\Proj\B3300.RDY_PSH_04.DGN