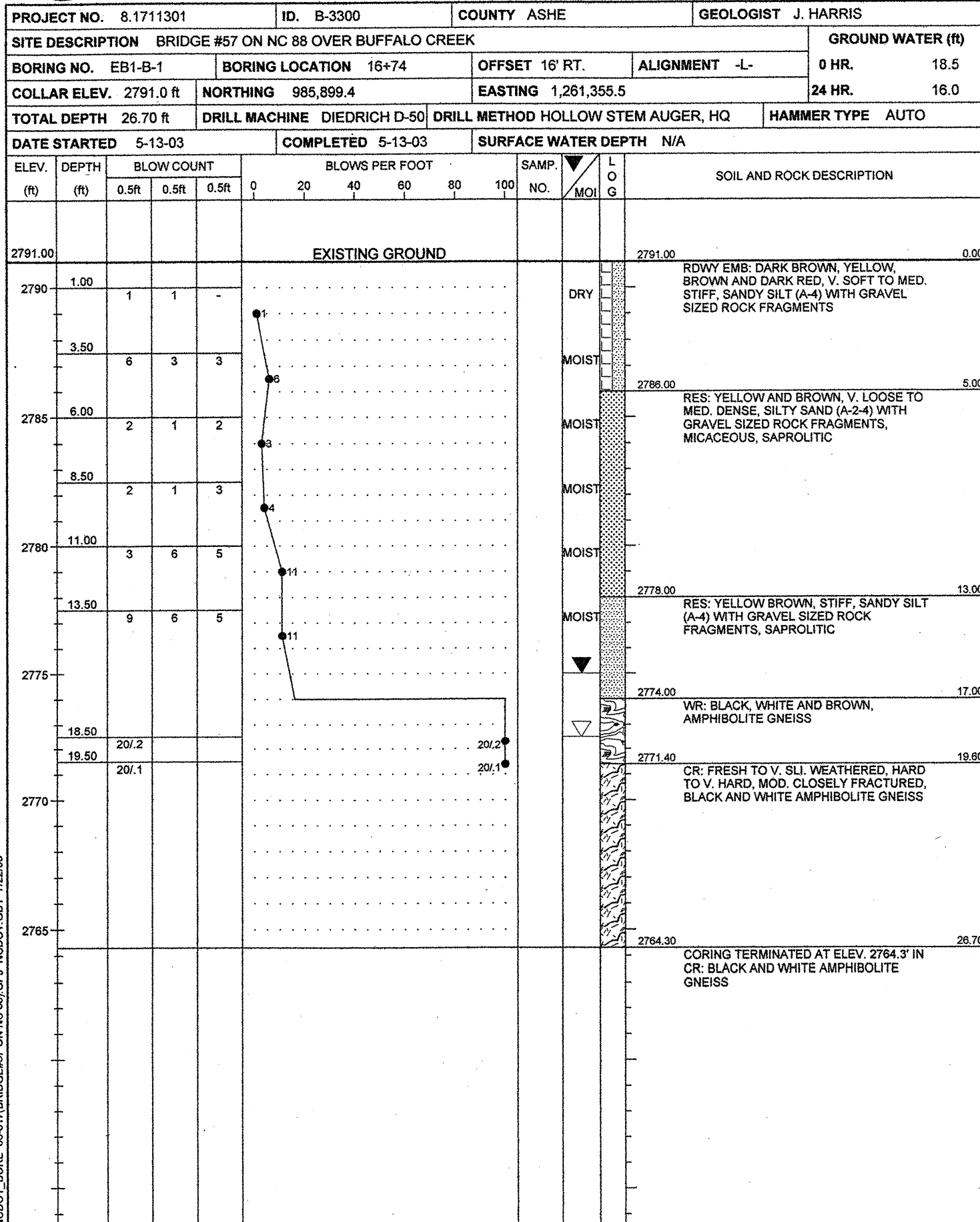




2701 ROWLAND ROAD
RALEIGH, NORTH CAROLINA 27615
Phone (919) 871-0800 Fax (919) 871-0803

N.C.D.O.T. GEOTECHNICAL UNIT
BORING LOG

SHEET 1 OF 1



CORE BORING REPORT

DATE: 05/13/03

PROJECT: 8.1711301 I.D. NO.: B-3300 BORING NO: EB1-B-1 GEOLOGIST: J. HARRIS

DESCRIPTION: BRIDGE #57 ON NC 88 OVER BUFFALO CREEK

COUNTY: ASHE COLLAR ELEV.: 2791.0 FT TOTAL DEPTH: 26.7 FT

ELEV. (FT)	DEPTH (FT)	DRILL RATE MIN/FT	RUN (FT)	REC FT %	RQD FT %	SAMP #	FIELD CLASSIFICATION AND REMARKS
2771.4	19.6	2:15	2.1	2.1/2.1	1.95/2.1		19.6-26.7 CR: FRESH TO V. SLI. WEATHERED, HARD TO V. HARD, MOD. CLOSELY FRACTURED, BLACK AND WHITE AMPHIBOLITE GNEISS
		1:45		100%	93%		
2769.3	21.7		5.0	4.9/5.0	3.65/5.0		STRATA REC = 98.6% STRATA RQD= 78.9%
2769.3	21.7	3:00		98%	73%		
		2:00					
2764.3	26.7	2:10					
		1:50					

CORING TERMINATED AT 26.7 FT
ELEVATION 2764.3 FT

DRILLER: C. COFFINDAFFER CORE SIZE: HQ3 EQUIPMENT: DIEDRICH D50 TRACK

NCDOT_BORE 03-017(BRIDGE#57 ON NC 88).GPJ NCDOT.GDT 7/22/03