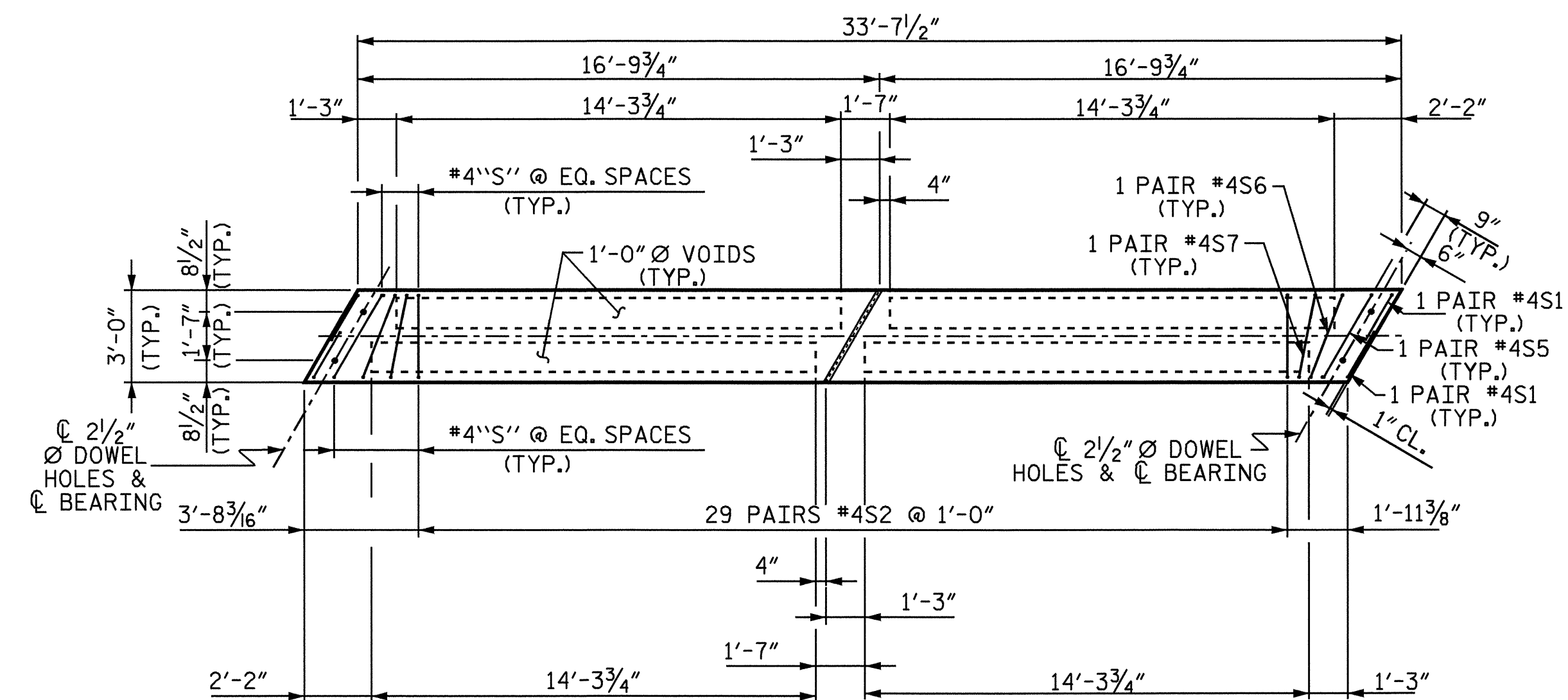
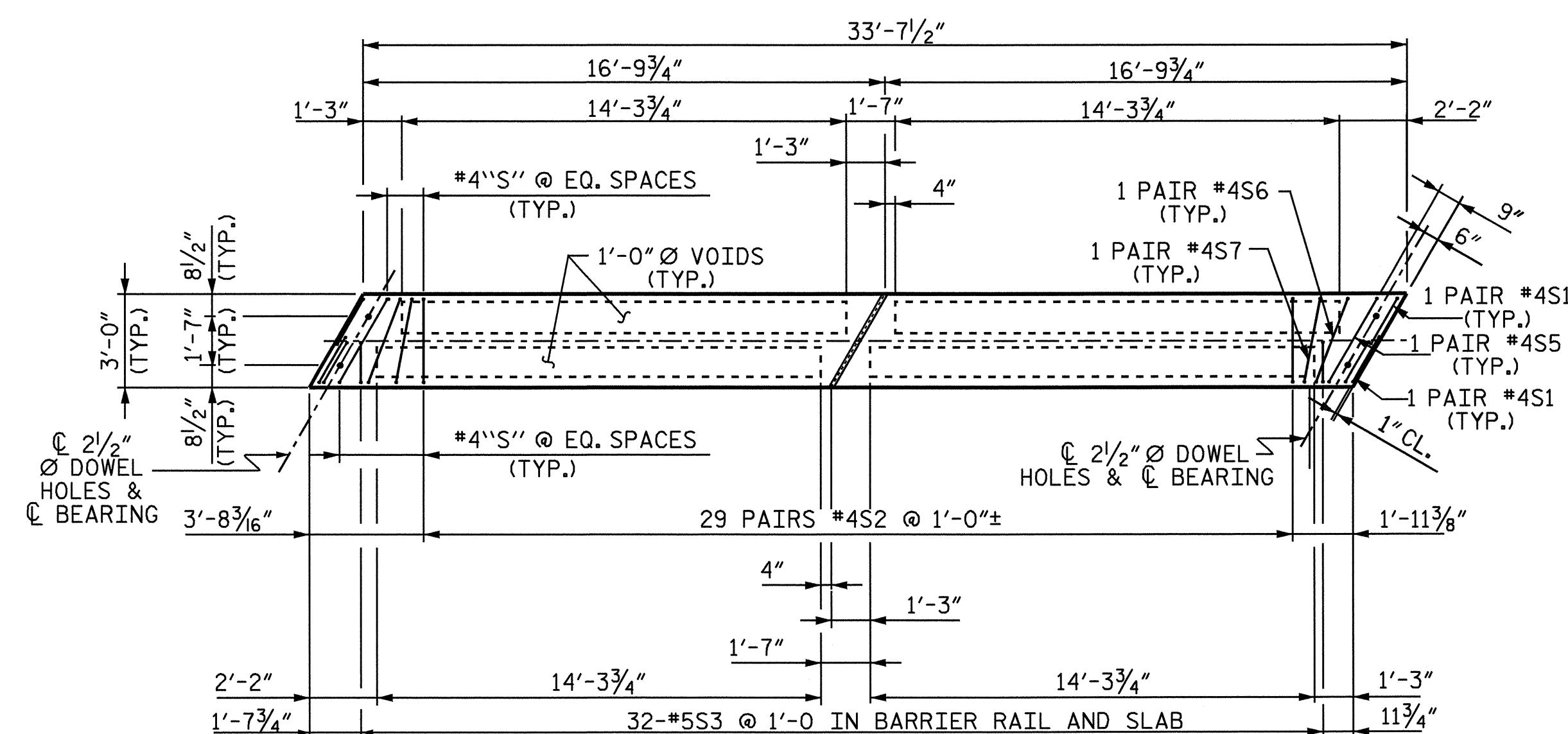


PLAN OF SPAN A



PLAN OF INTERIOR CORED SLAB UNIT



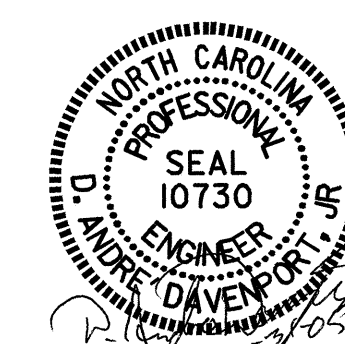
PLAN OF EXTERIOR CORED SLAB UNIT

PROJECT NO. B-4320
WAYNE/DUPLIN COUNTY
 STATION: 16+47.50-L-

SHEET 2 OF 5

STATE OF NORTH CAROLINA
 DEPARTMENT OF TRANSPORTATION
 RALEIGH

SUPERSTRUCTURE
 PLAN OF SPAN A



DRAWN BY: H. T. BARBOUR DATE: 3-15-04
 CHECKED BY: D. A. DAVENPORT DATE: 3-04

31-JAN-2005 15:01
 W:\quad\J\ABASIC\2\B4320\barbarbour\MICROS\2\B-4320\26.DGN
 ddavenport

REVISIONS						SHEET NO.	
NO.	BY:	DATE:	NO.	BY:	DATE:	5-5	
1			3			TOTAL SHEETS	
2			4			22	

STR.#1

NC006